

SOUTH BAY CITIES CIVIC CENTER
 COUNTY OF LOS ANGELES
 MAP OF
REDONDO BEACH CIVIC CENTER
 BEING A PORTION OF LOT B, TRACT NO. 1786, M.B. 22-63,
 AND A PORTION OF LOT I, TRACT NO. 2341, M.B. 23-61.

COUNTY SURVEYORS MAP NO. B-2272.
 SCALE: 1 INCH = 50 FT.

JOB NUMBER 8603
 C. E. ARNOLD - COUNTY SURVEYOR
 SURVEYED SEPT.-NOV. 1950

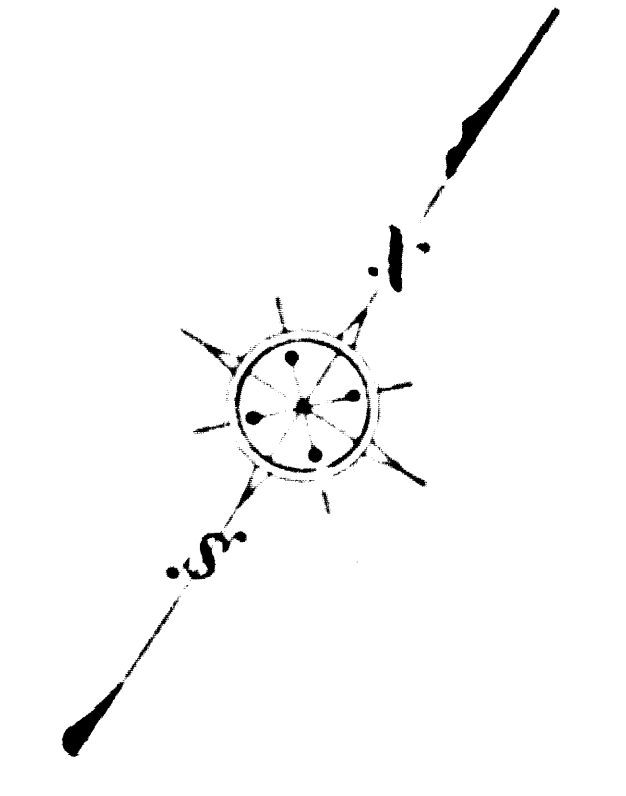
SURVEYED ON REQUEST OF THE CHIEF MECHANICAL
 ENGINEER UNDER SEC. 79, ORD. 4098, BY LETTER DATED
 JULY 24, 1950

BEARINGS ARE BASED ON THE BEARING OF THE
 EASTERLY LINE OF LOT I, TRACT NO. 2341, M.B. 23-61,
 AS SHOWN IN E: 99-184 AND O.R. 24999-132.

F.B. 1589-55-73.
 FIELD WORK BY F. H. BLANCHARD
 R. L. WILLEY
 OFFICE WORK BY T. M. ICHIEY
 CHECKED BY D. M. FINLEY

Revised, Sept. 1954 C.E.A.

CSB-2272
 A1 OF A2



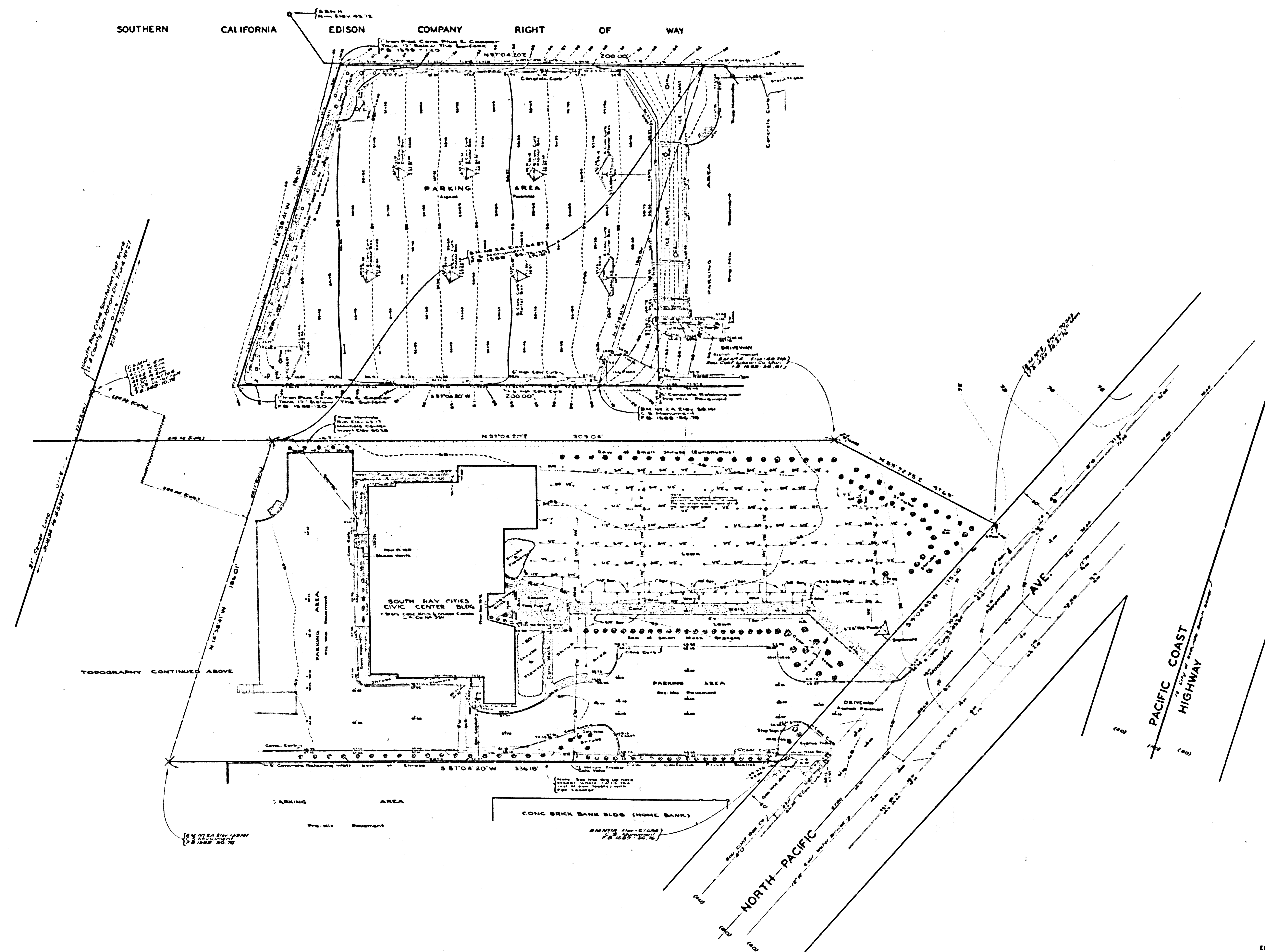
MARGINAL MAP
 SHOWING
 TOPOGRAPHY
 SCALE: 1 INCH = 20 FT.
 FIELD WORK BY F. H. BLANCHARD
 OFFICE WORK BY Y. ITO
 CHECKED BY C. J. GALLI
 F.B. 1589-53-78

DATUM - MEAN SEA LEVEL
 ELEVATIONS SHOWN HEREON ARE BASED ON THE
 1946 U.S.C. & G.S. ADJUSTMENT OF COUNTY
 SURVEYORS TRAVERSE STATIONS, TORRANCE
 FT. (U.S. 4244) AND TORRANCE F.M. (U.S. 4243)
 Reduced from Plane Table Chart F. 254
 Surveyed by Carl B. Sutter Nov. 1942
 Checked by F. H. Blanchard Nov. 1942
 Reduced from Plane Table Chart F. 439
 Surveyed by Carl B. Sutter Nov. 1942
 Checked by F. H. Blanchard Nov. 1942
 Reduced from Plane Table Chart F. 439
 Surveyed by Carl B. Sutter Nov. 1942
 Checked by F. H. Blanchard Nov. 1942

COUNTY SURVEYORS MAP No. B-5513

COUNTY SURVEYORS MAP No. B-5513

SOUTHERN CALIFORNIA EDISON COMPANY RIGHT OF WAY



HERONDO

FRANCISCA
NORTH
NORTH

MARGINAL MAP
SHOWING
TOPOGRAPHY

SCALE: 1 INCH = 20 FT.

FIELD WORK BY..... F. H. BLANCHARD
OFFICE WORK BY..... Y. ITO
CHECKED BY..... C. J. GALLI

F.B. 1589-53-78

DATUM - MEAN SEA LEVEL

ELEVATIONS SHOWN HEREON ARE BASED ON THE
1948 U.S.C. & G.S. ADJUSTMENT OF COUNTY
SURVEYORS TRAVERSE STATIONS "TORRANCE
F7B" (U.S. 4244) AND "TORRANCE F8A" (U.S. 4245)
RELATION FROM Plane Table Survey of 1954
LAYOUT BY Carl S. Sutter Nov 1952
REVISION CHECKED BY Y. ITO Nov 1952
REVISION FROM PLANS Table Sheet "A. 20"
U.S. 4244
REVISION BY Y. ITO Dec 1954
REVISION BY Y. ITO Dec 1954
TABLE AREA SURVEYED Feb 1954 (North of Pacific Coast Highway)

CSB-2272
AZ OF AZ