

MARGINAL MAP
SHOWING TOPOGRAPHY
SCALE: 1 INCH = 20 FT.

FIELD WORK BY..... E.C. WALLACE
OFFICE WORK BY..... D.E. MACPHERSON
CHECKED BY..... D.A. WHITE
F.B. 1399-35-56

DATUM - MEAN SEA LEVEL
ELEVATIONS SHOWN HEREON ARE BASED UPON
THE STATE HWY. ELEVATION (192.03) OF THEIR
B.M. #19 AT STA. 721+85 L.A. 9A (F.B. X 371-150)
THE ABOVE B.M. #19 IS NOW CALLED "20A", BY
STATE HWY. AT STA. 721+82 WITH AN ELEVATION
OF 152.41 (F.B. L 371-4).

NOTE:
FOR PROPOSED CURB LOCATION AND
GRADE IN FOOTHILL BLVD., NOT DESIGNED
AS OF SEPT. 1, 1951, SEE STATE HIGHWAY
DEPT.

COUNTY OF LOS ANGELES
LOS ANGELES CO. MAP OF
LA CANADA FIRE STATION SITE No 19
ENGINE CO - No 19
CONSOLIDATED COUNTY FIRE PROTECTION DISTRICT
BEING
PORTION OF LOT 11-HILLARD TRACT-M.R.43-64.
COUNTY SURVEYORS MAP No B-2275
SCALE - 1 INCH = 100 FT

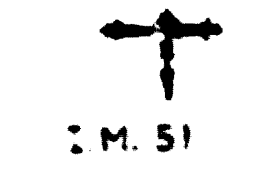
JOB NUMBER - 0216

C. E. ARNOLD - COUNTY SURVEYOR
SURVEYED - SEPTEMBER - 1950

SURVEYED ON REQUEST OF THE CHIEF ENGINEER
COUNTY FIRE PROTECTION DISTRICTS UNDER
SEC. 79, ORD. 4099, BY LETTER DATED AUG-16-1950
BEARINGS ARE BASED ON THE BEARING OF
FOOTHILL BLVD. AS SHOWN ON C.S.B - 575.

F.B. 1399-35-56

FIELD WORK BY E.C. WALLACE.
OFFICE WORK BY R.W. HIGGINS.
CHECKED BY K.R. MACPHERSON



CSB-2275
AI OF AI