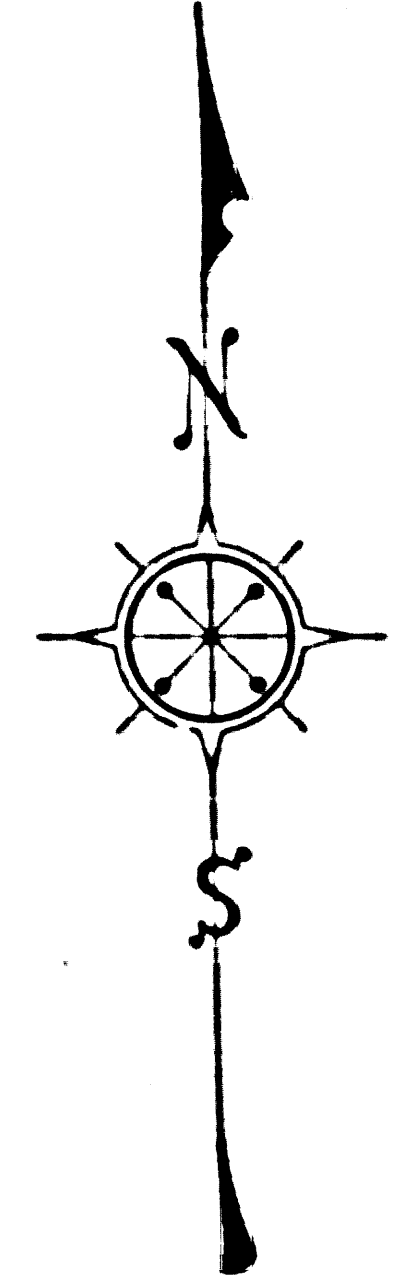


STATE AND COUNTY
PLACERITA CANYON PARK

E: 96-8 O.R. 31089-107
48,604 AC.
3,308
1,087
52,999 AC.

T. 3 N., R. 15 W.

FOR SURVEY OF PARK
ADDITION SEE S.D. FILE # 50-27



STATE AND COUNTY
COUNTY OF LOS ANGELES
MAP OF
PLACERITA CANYON PARK
IN
SECTION 5, T. 3 N., R. 15 W.
COUNTY SURVEYORS MAP NO. B-2280
SCALE: 1 INCH = 100 FT.

JOB NUMBER 8801
WILLIAM J. FOX - COUNTY SURVEYOR
SURVEYED JULY AND AUG. 1952
SURVEYED ON REQUEST OF THE DIRECTOR OF
PARKS AND RECREATION UNDER SEC. 79, ORD.
4099, BY LETTER DATED JUNE 26, 1952.
BEARINGS ARE BASED ON THE BEARING OF
THE WEST LINE OF SECTION 5, T. 3 N., R. 15 W.
PER C.S.B. - 468-3.
F.B. 1609-143-155
FIELD WORK BY: W. S. COMBERD
OFFICE WORK BY: T. M. BURNS
R. L. GREEN
CHECKED BY: D. W. FINLEY

INDEX 62

Revised December 1952 - G. Bailey
Name changed by Bu. Ord. M.B.A. 43 98 E 119-93
Name & Date Surveyed July 1952 - W. J. Fox
Revised January 1957 - G. Bailey

SECTION CORNER
Established at record bearing and distance
from bearing tree per C.S. 9045-23. Set
of Standard County Surveyors Monument marked
on West slope of mountain. F.B. 1609-40, 143, 147.
In 1874 M. G. Wheeler set out post 4" in diameter 4' long,
deposited a cleared stake and raised stone mound for
the corner to Sections 4, 5, 8 and 9 on the west slope of
a rough mountain.
A black oak 30" in diameter bears N 51° W, 270 links.
A black oak 12" in diameter bears S 82° W, 258 links.
See C.S. 9045-23.
Digging search on a mound, covering a large area in this
vicinity, for Wheeler's original corner. The blessed bearing
tree is the only evidence of the location for the corner
that could be found.

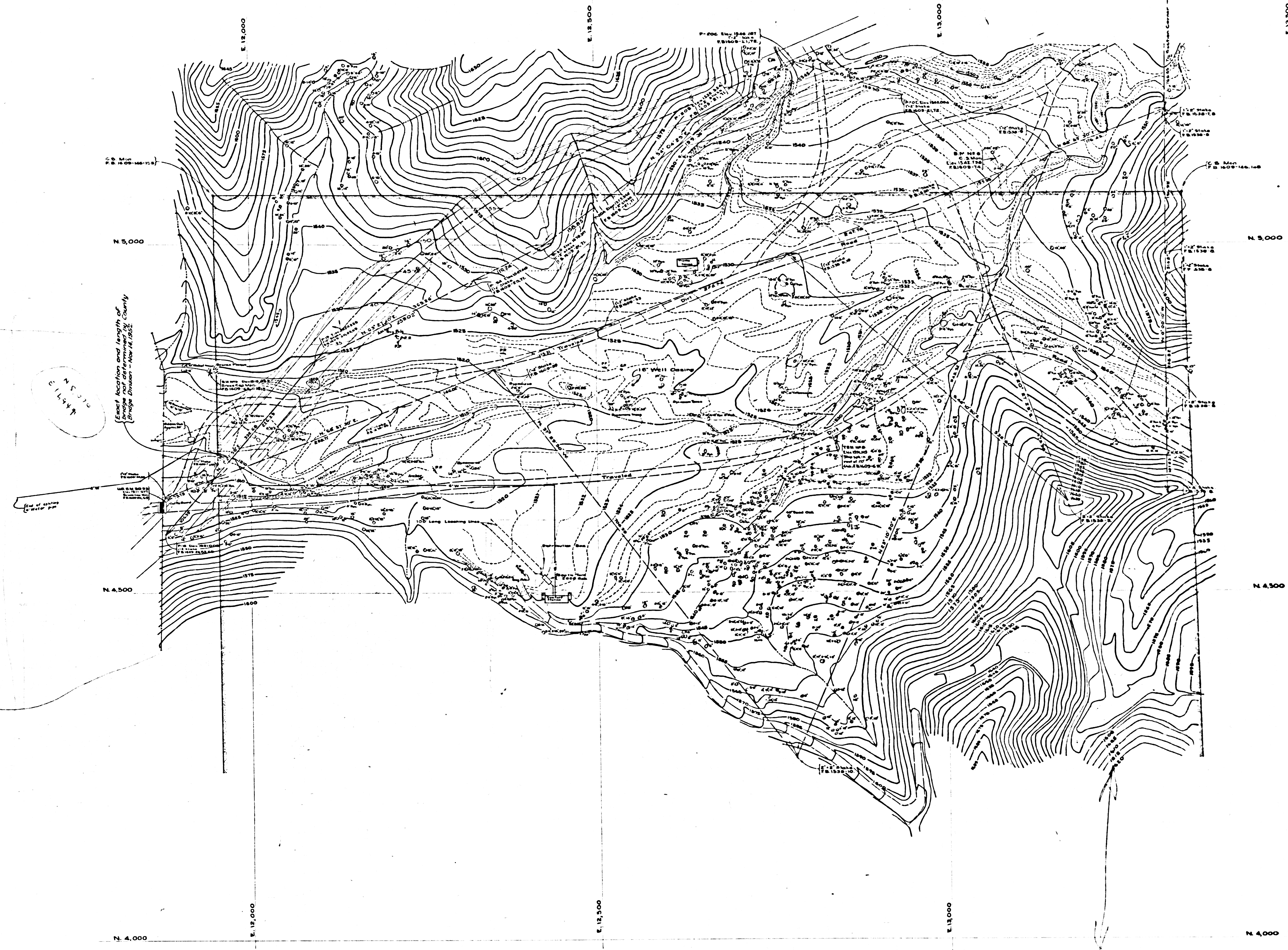
CSB-2280
A1 OF A3

COPYRIGHT SURVEYORS MAP NO. B-2280

COPYRIGHT SURVEYORS MAP NO. B-2280

S. B. OM 9AM 200YAVRUS YTVUOQ

0955-B OM 9AM 200YAVRUS YTVUOQ



NOTE: Unless otherwise noted, all trees shown herein are Oak Trees.

MARGIN
 SHO
 TOPOG
 SCALE 1:125,000
 FIELD WORK BY...
 OFFICE WORK BY...
 CHECKED BY...
 PLANE TABLE SH...

DATUM - MEAN SEA LEVEL
 ELEVATIONS SHOWN IN FEET
 1928 U.S.C. & G.S. ADJUSTED
 B.M. 14-53-1
 Method 5-17-55 Under
 Revised 10-2-56 Under

CSB-2280
A3 OF A3