

All trees shown hereon are Oak Trees
unless otherwise indicated.

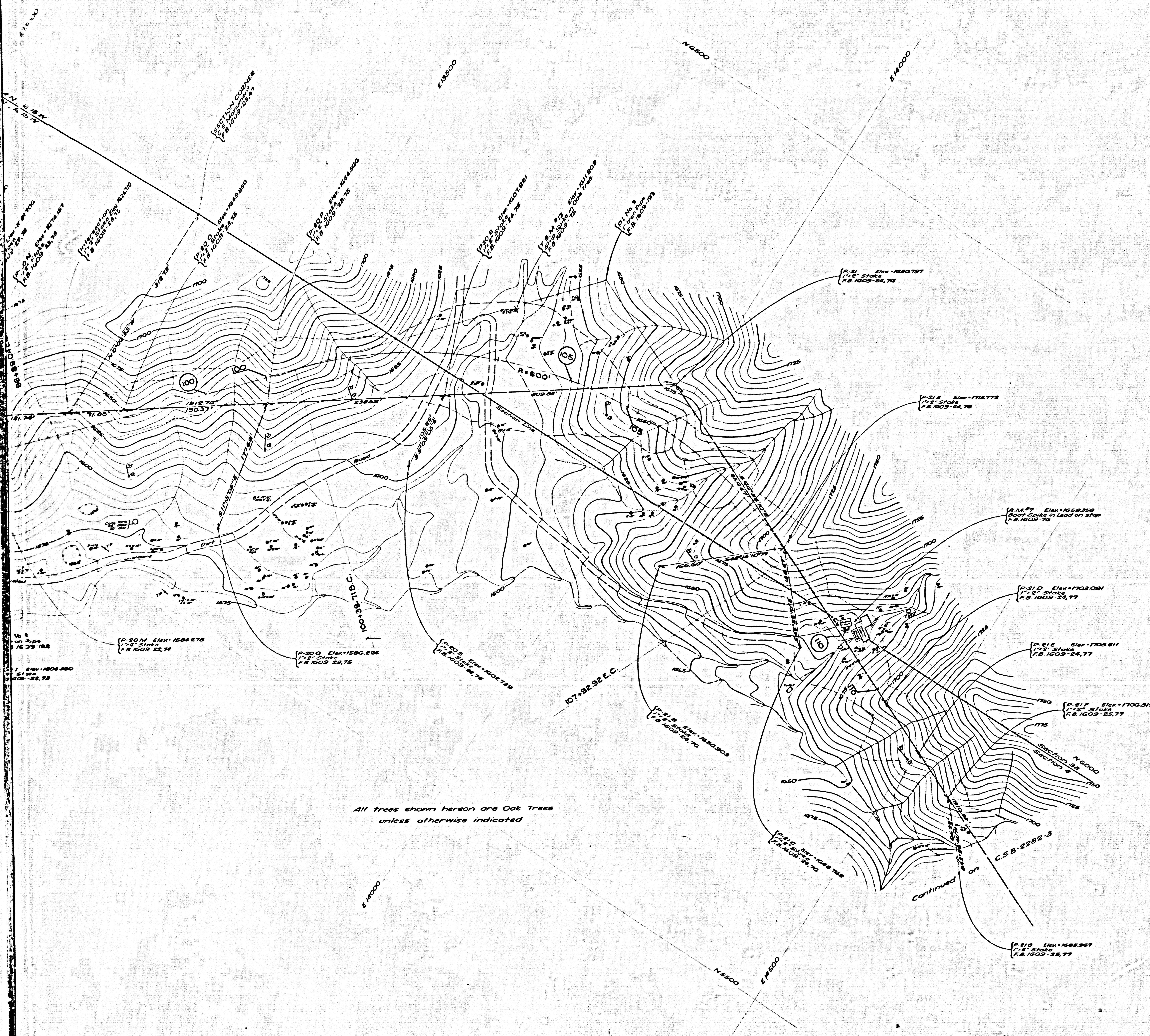
CSB	2282-2
A1	OF A3

All trees shown hereon are Oak Trees
unless otherwise indicated

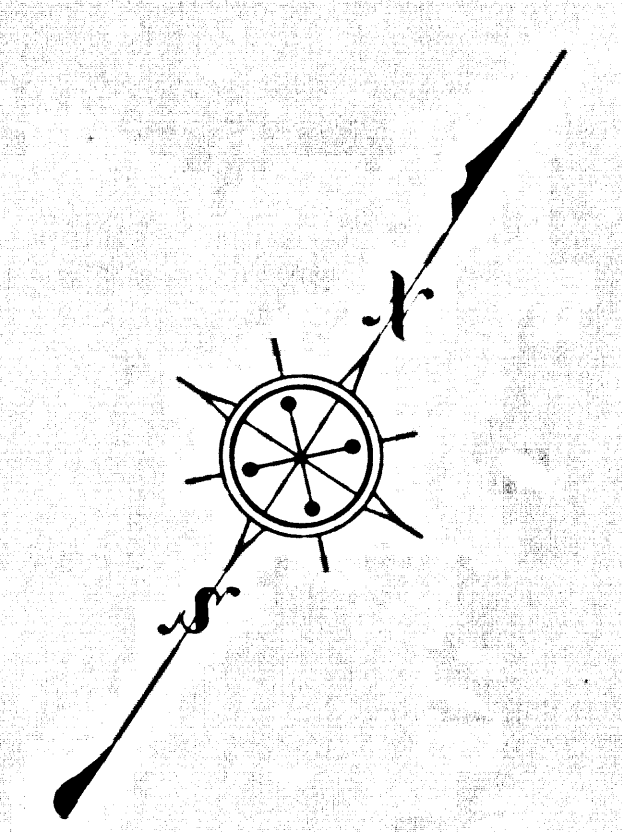
EQUATION:
85+21.78 BACK
85+24.18 AHEAD

All trees shown hereon are Oak Trees
unless otherwise indicated

CSB	2	2	8	2	-	2
A	2	OF	A	3		



All trees shown hereon are Oak Trees
unless otherwise indicated



COUNTY OF LOS ANGELES
TOPOGRAPHIC MAP OF
PLACERITA CANYON ROAD
FROM
SIERRA HIGHWAY
TO
SAND CANYON ROAD

COUNTY SURVEYORS MAP NO B-2282
SHEET NO 2 OF 5 SHEETS
SCALE: 1 INCH = 50 FT.
JOB NUMBER 8555

C.E. ARNOLD - COUNTY SURVEYOR
SURVEYED AUG., 1949 TO OCT., 1952

SURVEYED ON REQUEST OF THE ROAD
COMMISSIONER, UNDER SEC. 79, ORD.
4099, BY LETTER DATED APRIL 25, 1949

BEARINGS ARE BASED ON THE
BEARING OF THE NORTH LINE OF
SECTION 6, T.3 N., R.15 W. AS SHOWN
ON C.S.B. - 468-3.

PLANE TABLE SHEETS
F-369 TO F-372 INCL.
FB 1538 & FB 1609

FIELD WORK BY W.S. COWHERD
R.C. BOWERS
L.L. BROWN

OFFICE WORK BY W.G. VAN DEREN
H.H. FONG
D.E. MACPHERSON
Y. ITO

CHECKED BY D.A. WHITE

CUT & FILL SLOPES ADDED IH-53 TCC

INDEX 62
DATUM - MEAN SEA LEVEL

ELEVATIONS SHOWN HEREON ARE BASED ON THE
1928 U.S.C. & G.S. ADJUSTMENT OF U.S.C. & G.S.
B.M. N-53-1928 (U.S. 206.3)

FOR ALIGNMENT SEE C.S.B. 2283-1

NOTE:
Stations shown thus — and B.C. and
E.C. stations are signpost road stations.
Encircled stations and intermediate points are
earthwork stations.

NOTE:
Symbols shown thus — indicate toe of fill.
Symbols shown thus — indicate top of cut.

CSB 2282-2
A3 OF A3