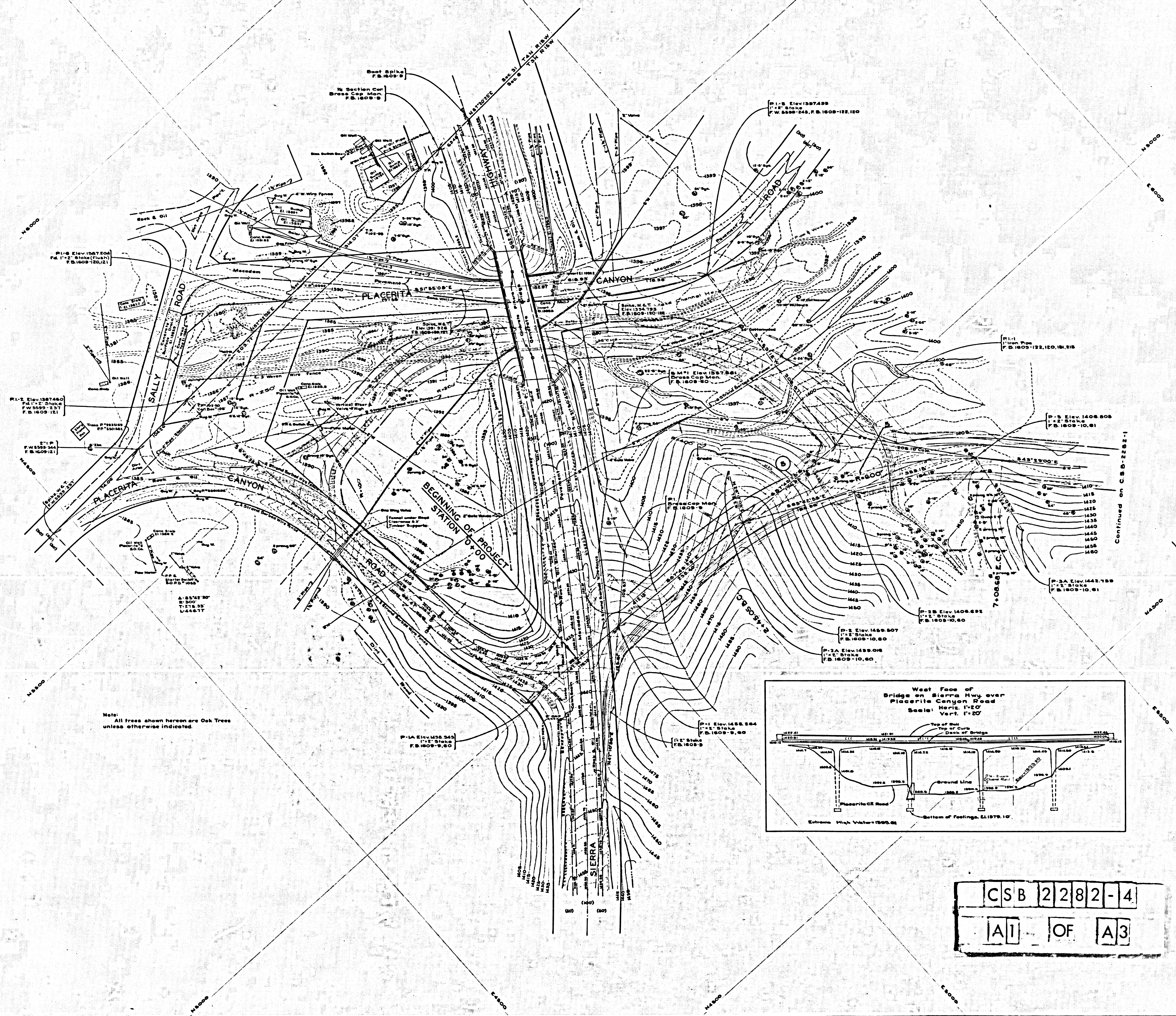
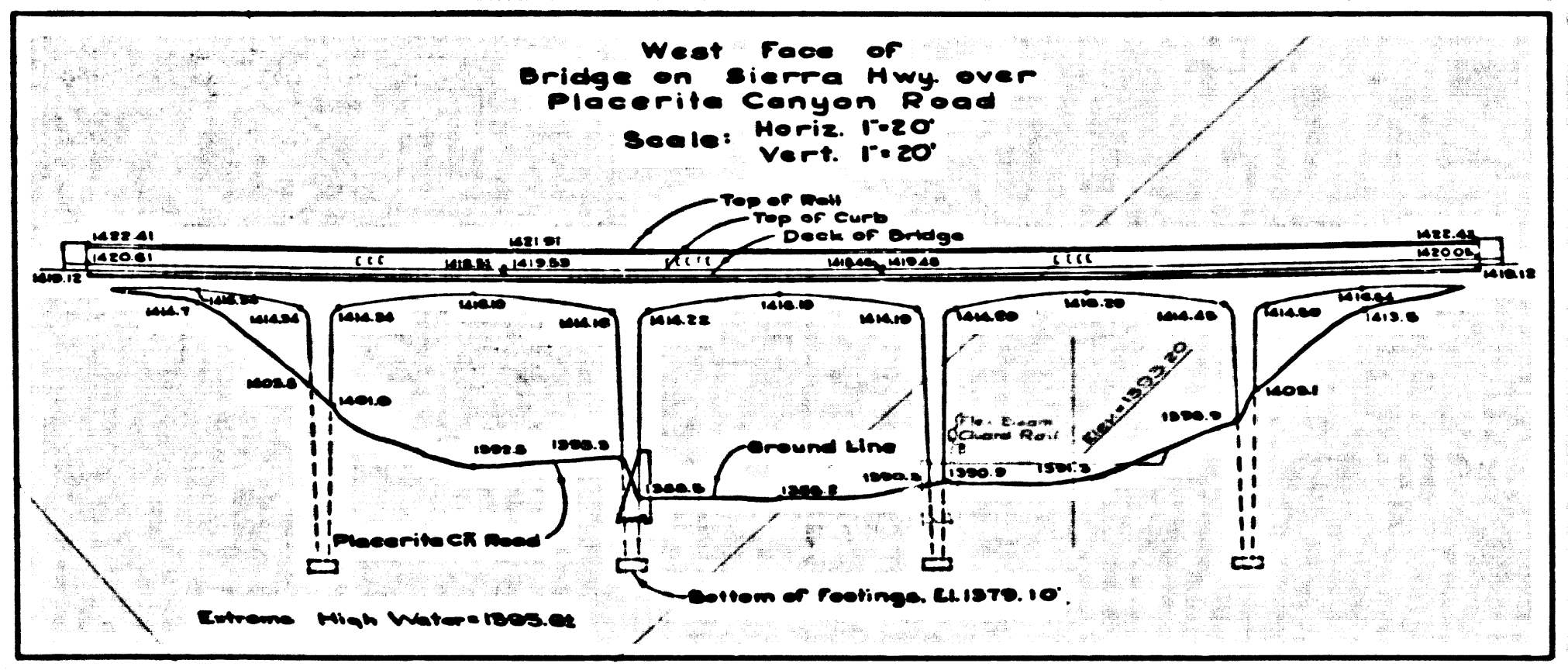


SHEET NO. 14 OF 17
CONTRACT NO. 208-2282-4

SCALE: HORIZ. 1"=20'
VERT. 1"=20'

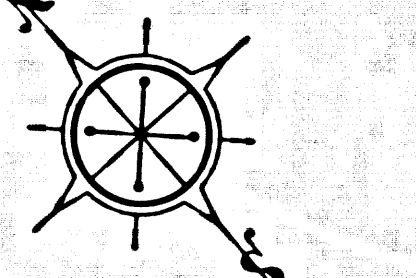


Note: All trees shown hereon are Oak Trees unless otherwise indicated.



CSB 2282-4
A1 OF A3

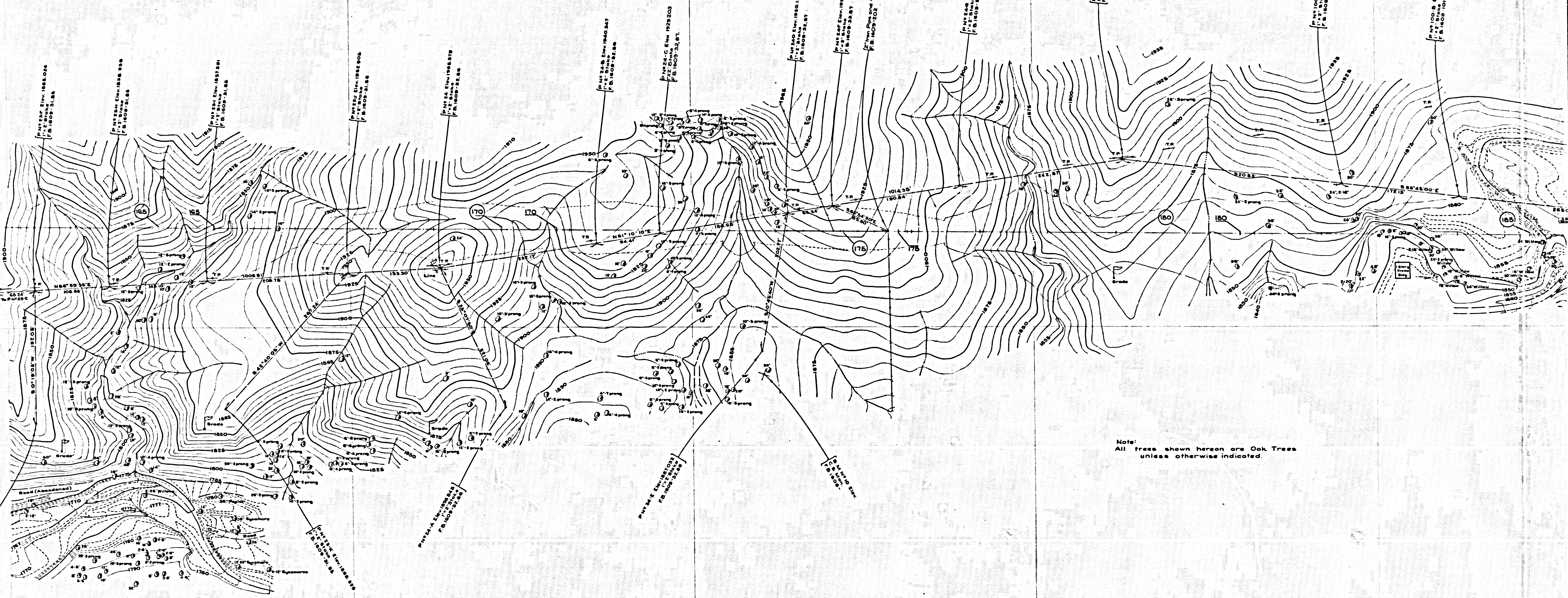
Continued on CSB-2282-1



N 5500

N 5000

N 4500



Continued from C.S.B. 2282-3

Note:
All trees shown hereon are Oak Trees
unless otherwise indicated.

C	S	B	2	2	8	2	-	4
A	2						OF	A

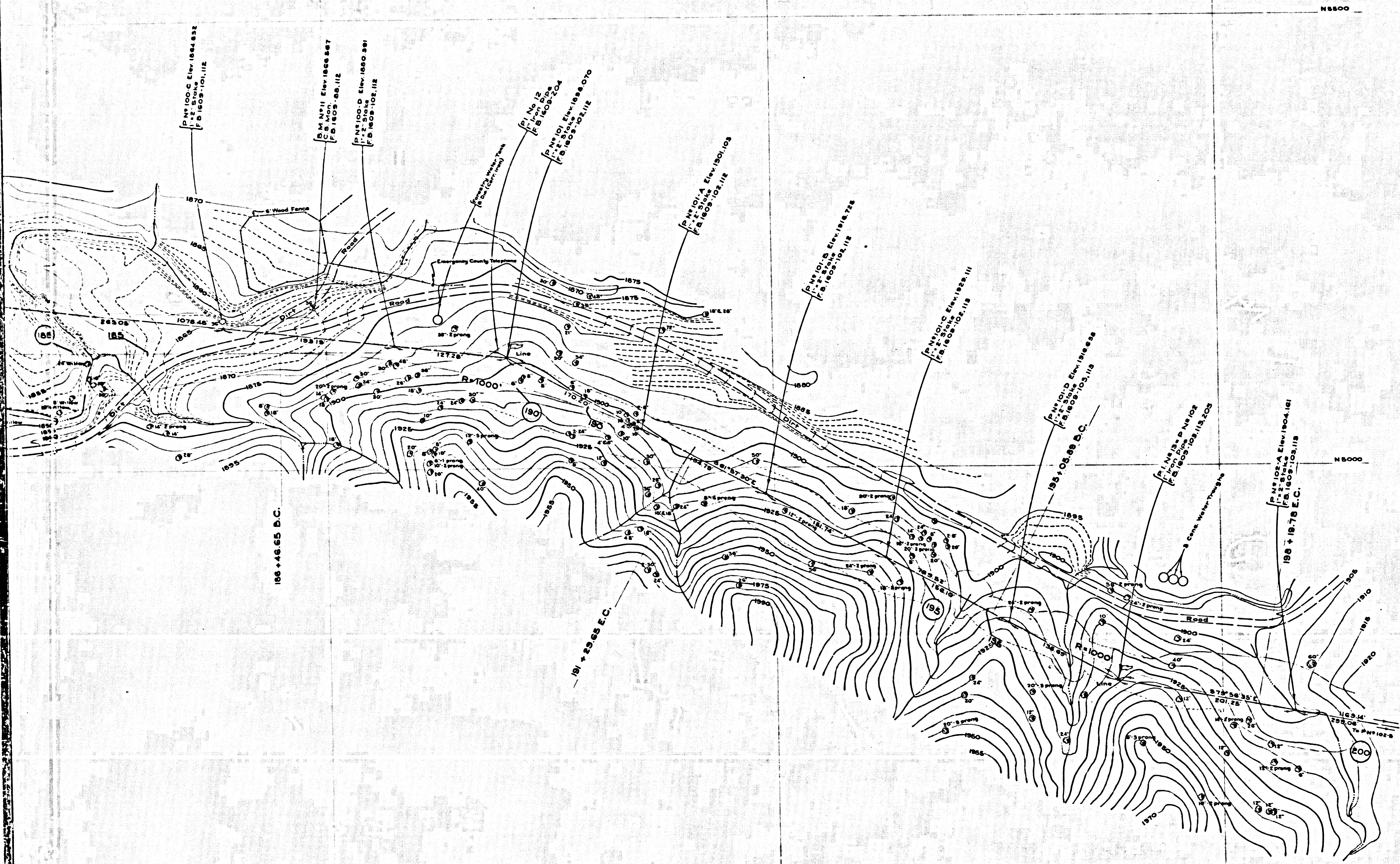
E 19,500

E 20,000

E 20,500

E 21,000

E 21,500



Continued on C.S.B. 2282-5

CSB	2282-4
A3	OF A3

NOTE:
 Symbols shown thus indicate toe of fill.
 Symbols shown thus indicate top of cut.

COUNTY OF LOS ANGELES
 TOPOGRAPHIC MAP OF
PLACERITA CANYON ROAD
 FROM
 SIERRA HIGHWAY
 TO
 SAND CANYON ROAD

COUNTY SURVEYORS MAP NO. B-2282
 SHEET NO. 4 OF 5 SHEETS
 SCALE: 1 INCH = 50 FT.
 JOB NUMBER 8555

WILLIAM J. FOX - COUNTY SURVEYOR
 SURVEYED AUG. 1949 TO OCT. 1952
 SURVEYED ON REQUEST OF THE ROAD
 COMMISSIONER UNDER SEC. 79, ORD.
 4099, BY LETTER DATED APRIL 25, 1949
 BEARINGS ARE BASED ON THE
 BEARING OF THE NORTH LINE OF
 SECTION 6, T. 3 N., R. 15 W., AS SHOWN
 ON C.S.B. - 468-3.

PLANE TABLE SHEETS
 F-366, F-368, F-375, F-376 & F-387
 F.B. 1609

FIELD WORK BY..... L. L. BROWN
 R. B. HOBSON
 D. S. WALTERMIRE
 F. H. BLANCHARD
 W. S. COWHERD
 OFFICE WORK BY..... H. D. HEBER
 H. H. F. DONG
 W. A. EDMONDSON
 D. E. MACPHERSON
 W. G. VAN DEREN
 R. E. SNYDER

CHECKED BY..... Y. ITO

CUT & FILL SLOPES ADDED 1/13-53 TCC

INDEX GC
 DATUM - MEAN SEA LEVEL

ELEVATIONS SHOWN HEREON ARE BASED ON THE
 1928 U.S.C. & G.S. ADJUSTMENT OF U.S.C. & G.S.
 B.M. 'K' 53-1926 (U.S. 2063)
 FOR ALIGNMENT SEE C.S.B. 2283-2

NOTE:
 Stations shown thus and D.C. and
 E.C. stations are alignment map stations.
 Enclosed stations and intermediate points are
 earthwork stations.