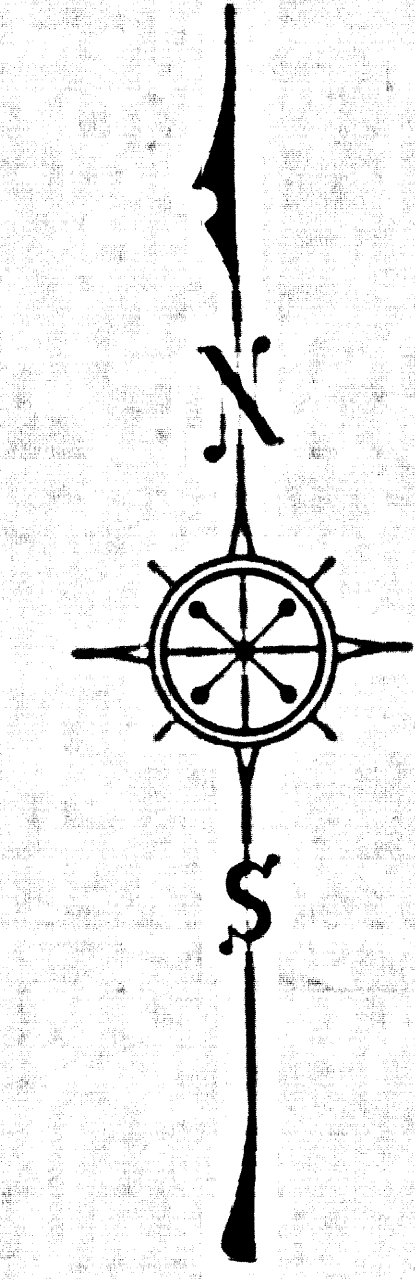


ER OCTOBER 1970
 C. S. B. - 5111 - 1 THRU 7
 N. W. 1/4 SECTION 4
 T. 3 N. R. 15 W.

SEE CSB 5111
 PROPER SECTION
 ESTABLISHMENT



COUNTY OF LOS ANGELES
 MAP OF
PLACERITA CANYON ROAD
 FROM
 SIERRA HIGHWAY
 TO
 SAND CANYON ROAD
 COUNTY SURVEYORS MAP NO B-2283
 SHEET NO 1 OF 2 SHEETS
 SCALE: 1 INCH = 100 FT.

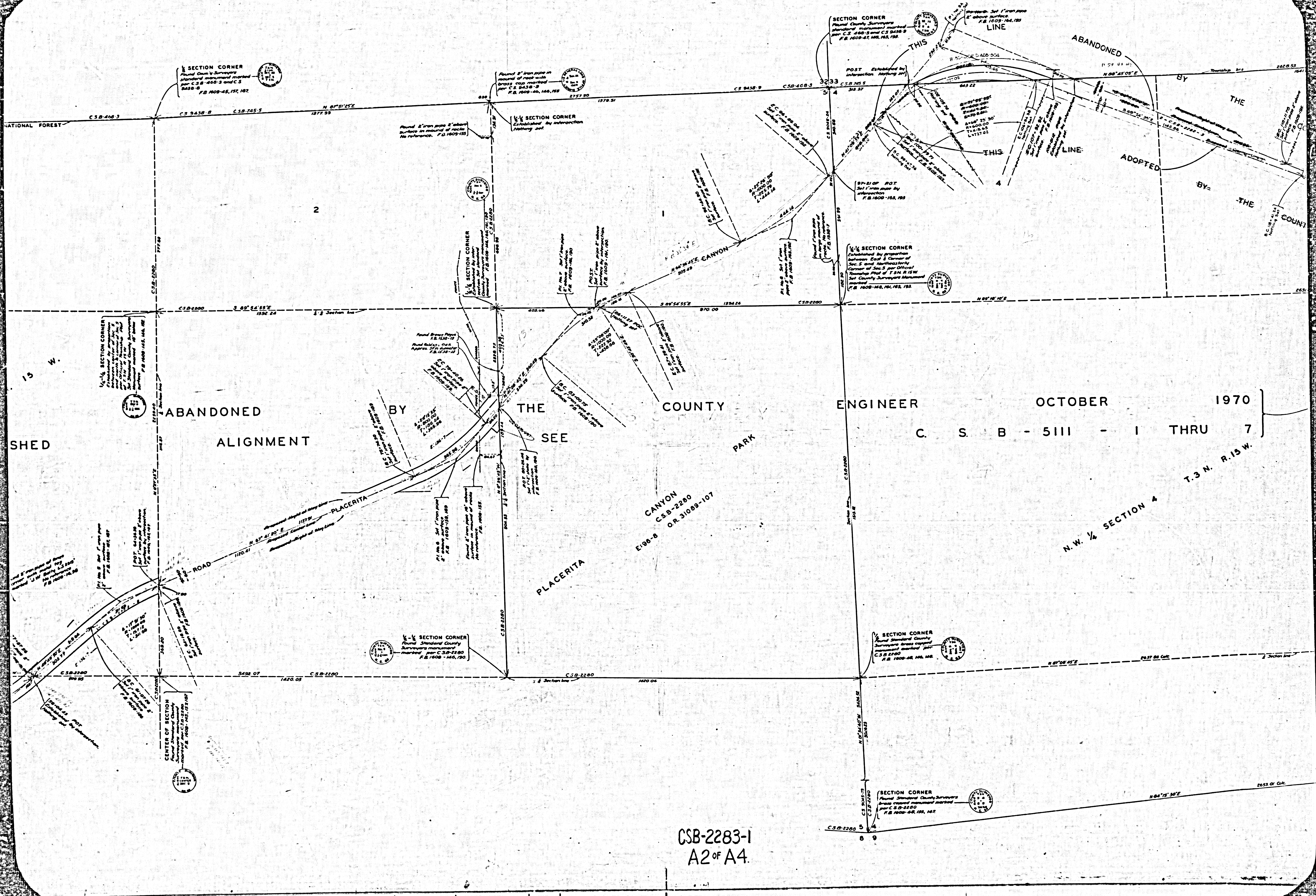
JOB NUMBER 8555
 WILLIAM J FOX - COUNTY SURVEYOR
 SURVEYED FEB 1950 TO OCT 1952
 SURVEYED ON REQUEST OF THE ROAD
 COMMISSIONER UNDER SEC. 79 ORD. 4099
 BY LETTER DATED APRIL 23, 1949.
 BEARINGS ARE BASED ON THE BEARING OF
 THE NORTHERLY LINE OF SECTION 6, T. 3 N.
 R. 15 W. AS SHOWN ON C.S.B. - 488-3.
 F.B. 1609-5-142; 127-217.
 FIELD WORK BY.....W. S. COWHERD
 E. F. ENGLISH
 F. H. BLANCHARD
 OFFICEWORK BY.....C. E. DROWN
 S. SHIMODA
 CHECKED BY.....D. M. FINLEY
 FOR TOPOGRAPHY SEE C.S.B. 2282-1 TO 5

CSB-2283-1
 A1 OF A4

ON 94 W. BROWNSVILLE TYPHOON
 S. 10 1 ON 13382

FILED IN NO. 1 CH. S. FIELD
 COUNTY SURVEYORS' OFFICE
 1710 N. B. ST. LOS ANGELES, CALIF.

INDEX 62
 Revised December 1952 - 8 days
 Revised July 1953 - 7.5 days



SECTION CORNER
Round Standard County Surveyors
Standard monument marked
per C.S. 468-3 and C.S.
9438-8
F.B. 1608-45, 157, 187.

SECTION CORNER
Established by intersection
Nothing set.

SECTION CORNER
Round Standard County Surveyors
Standard monument marked
per C.S. 468-3 and C.S. 9438-8
F.B. 1608-47, 162, 163, 188.

SECTION CORNER
Established by proportion
between East & Corner of
Sec. 5 and Northeastly
Corner of Sec. 5 per Official
Township Plat of T.S.M. R.I.S.M.
Standard County Surveyors Monument
F.B. 1608-163, 164, 165, 183.

SECTION CORNER
Established by proportion
between East & Corner of
Sec. 5 and Northeastly
Corner of Sec. 5 per Official
Township Plat of T.S.M. R.I.S.M.
Standard County Surveyors Monument
F.B. 1608-164, 165, 183.

SECTION CORNER
Established by proportion
between East & Corner of
Sec. 5 and Northeastly
Corner of Sec. 5 per Official
Township Plat of T.S.M. R.I.S.M.
Standard County Surveyors Monument
F.B. 1608-165, 166, 183.

SECTION CORNER
Round Standard County
Surveyors monument
marked per C.S. 2280
F.B. 1608-146, 150.

SECTION CORNER
Round Standard County
Surveyors monument marked
per C.S. 2280
F.B. 1608-146, 148, 149.

SECTION CORNER
Round Standard County Surveyors
Standard monument marked
per C.S. 2280
F.B. 1608-148, 153, 167.

CENTER OF SECTION
Round Standard County
Surveyors monument marked
per C.S. 2280
F.B. 1608-145, 157, 167.

CSB-2283-1
A2 OF A4.

ENGINEER C. S. B - 5111 - 1 THRU 7
OCTOBER 1970

N.W. 1/4 SECTION 4
T.3 N. R.15 W.

ABANDONED ALIGNMENT

BY THE SEE COUNTY PARK

PLACERITA CANYON
CSB-2280
E:98-8 OR 31089-107

SHED

15 W.

2

COUNTY

ADOPTED

BY

THE

COUNTY

ABANDONED

THIS LINE

THIS LINE

PLACERITA CANYON

PLACERITA ROAD

NATIONAL FOREST

Township 3 N 2

Range 15 W

C.S. 468-3

C.S. 9438-8

C.S. 745-5

N. 89° 51' 15" E

889

1379.54

C.S. 9438-9

C.S. 468-3

C.S. 745-5

3233

3437

N. 89° 45' 05" E

2628.53

C.S. 2280

S. 89° 44' 55" E

1892.24

408.66

870.00

C.S. 2280

N. 89° 44' 10" E

2651

N. 89° 45' 15" E

777.89

N. 87° 41' 30" E

1127.00

C.S. 2280

5494.07

1420.05

C.S. 2280

1420.05

C.S. 2280

1420.05

C.S. 2280

N. 87° 08' 45" E

2637.86 Chk.

2 Section line

C.S. 2280

N. 89° 44' 10" E

2651

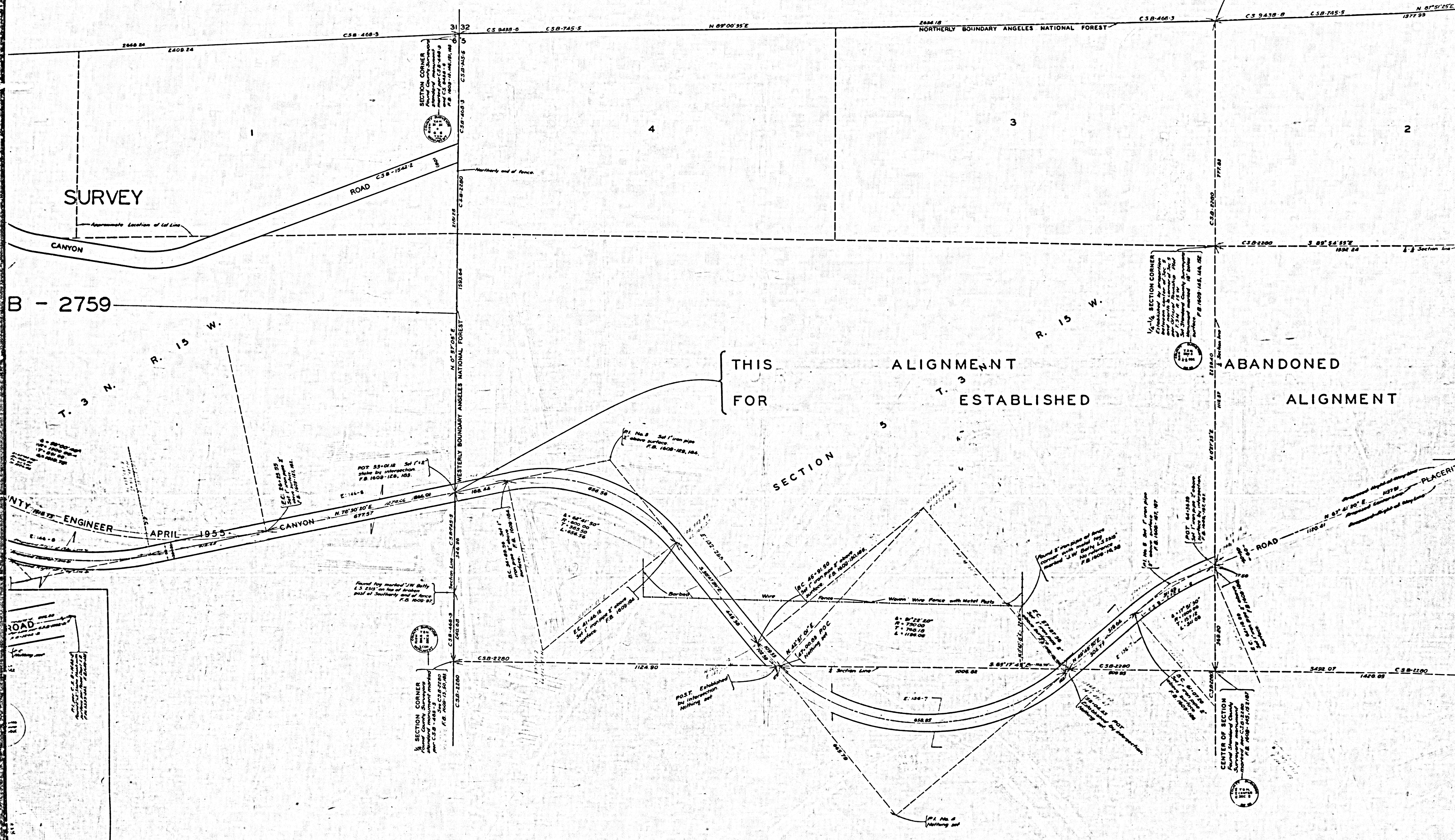
N. 84° 15' 30" E

2653.00 Chk.

SECTION CORNER
 Found County Surveyors
 standard monument marked
 with C.S.B. - 468-3 and C.S.
 9439-B
 F.B. 1608-45, 157, 167.

SURVEY

B - 2759



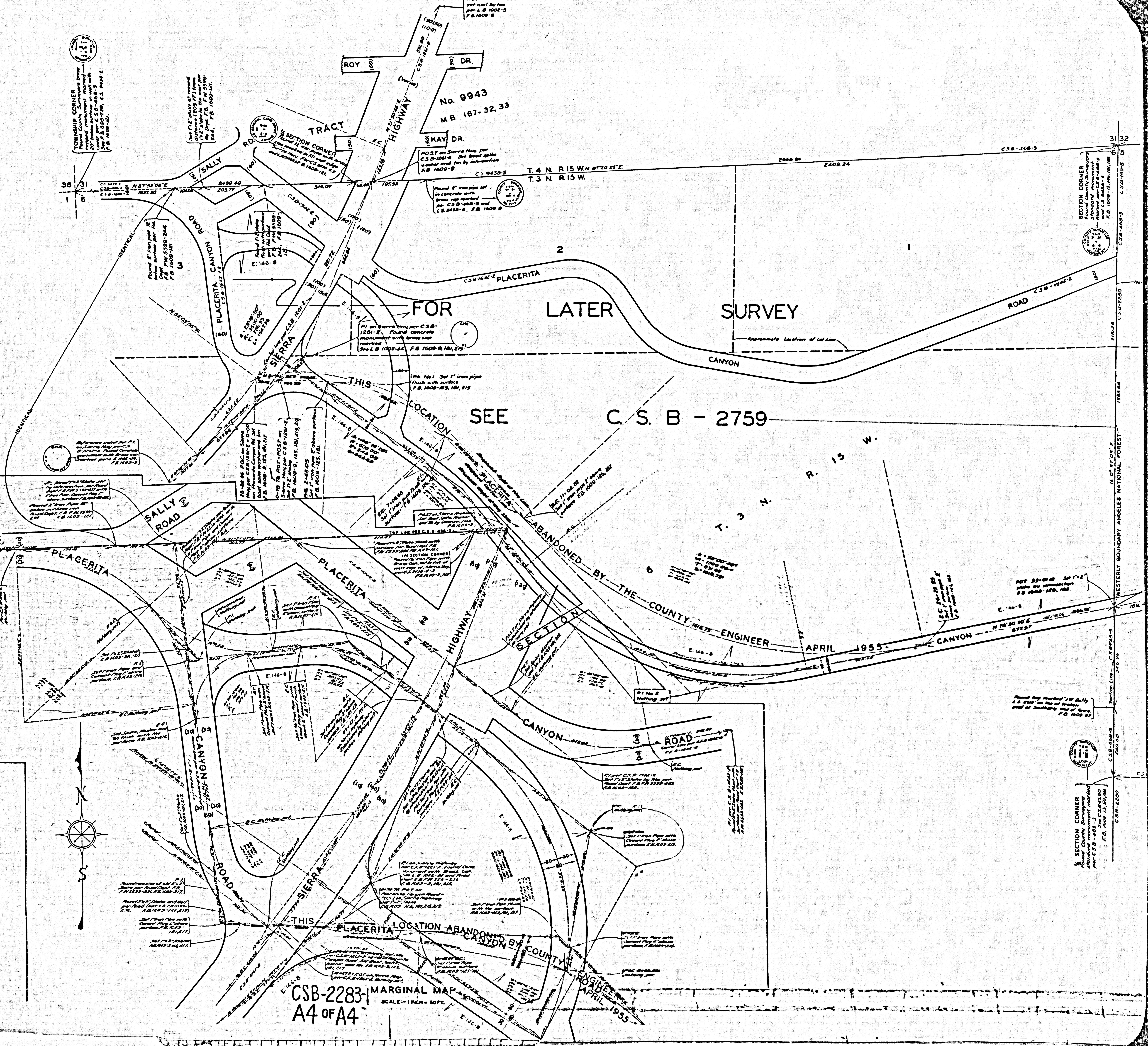
THIS ALIGNMENT FOR ESTABLISHED

ABANDONED ALIGNMENT

CSB-2283-1
 A3 of A4

SHEET NO. 1 OF 5 SHEETS
CONV. 2014/04/23 M.B. NO. 167-32,33

SHEET NO. 1 OF 5 SHEETS
CONV. 2014/04/23 M.B. NO. 167-32,33



CSB-2283-1
A4 of A4
MARGINAL MAP
SCALE - 1 INCH = 50 FT.

