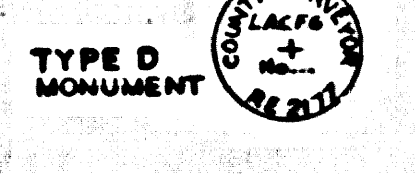
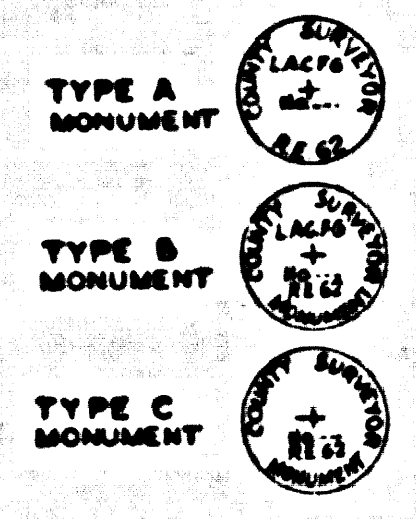
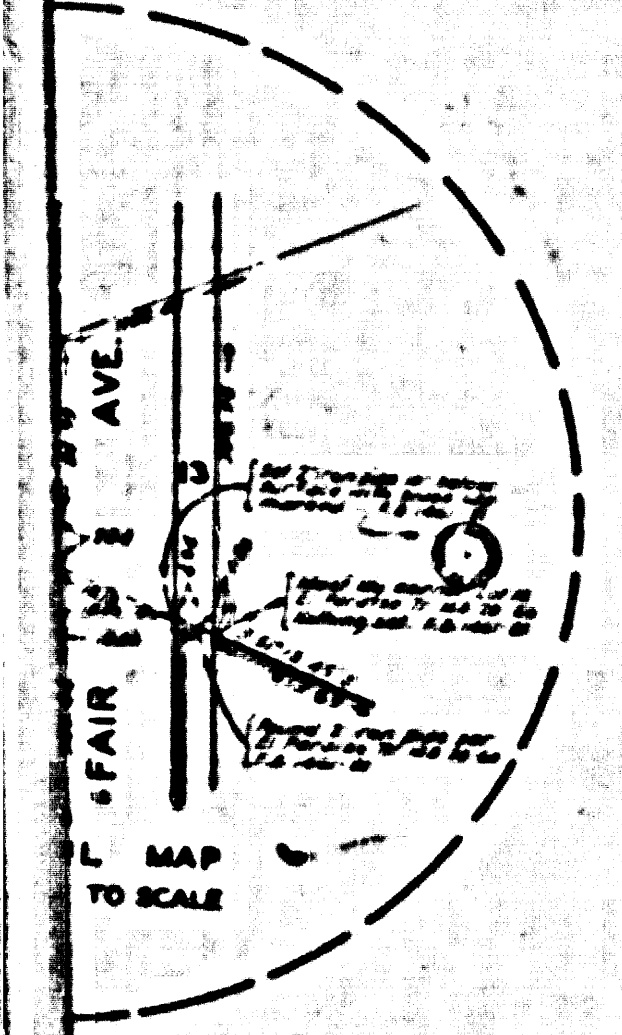


FORMAL PUBLICATION FILE NO. 589

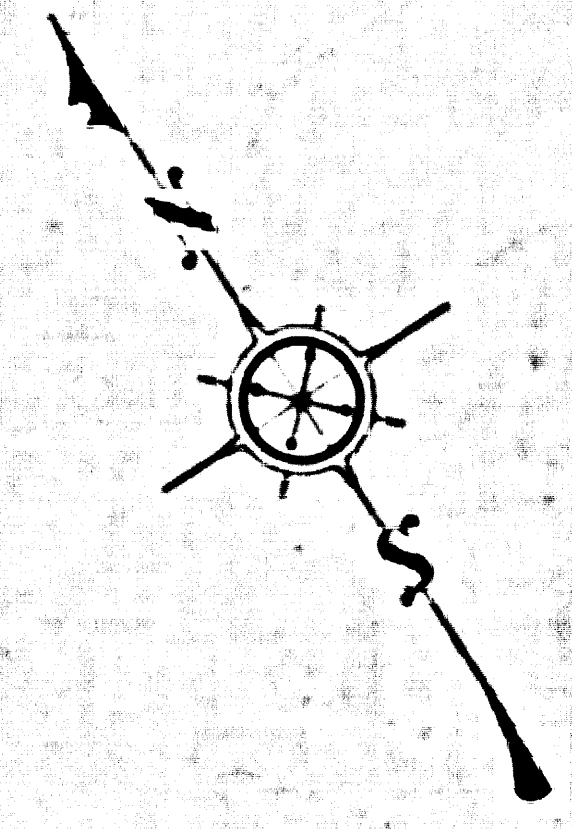


STA NO.	DESCRIPTION	REFERENCE
1	Set 2" iron pipe in concrete with brass cap marked.	F.B. 469-65
2	Found 2" iron pipe, plug & lock replaced same with 2" iron pipe set in concrete with brass cap marked.	F.B. 469-64
3	Found 2" iron pipe, plug & lock replaced same with 2" iron pipe set in concrete with brass cap marked.	F.B. 469-6
4	Found 2" iron pipe, plug & lock replaced same with 2" iron pipe set in concrete with brass cap marked.	F.B. 469-9
5	Found 2" iron pipe, plug & lock replaced same with 2" iron pipe set in concrete with brass cap marked.	F.B. 469-8
6	Found 2" iron pipe, plug & lock replaced same with 2" iron pipe set in concrete with brass cap marked.	F.B. 469-8
7	Found 2" iron pipe, plug & lock replaced same with 2" iron pipe set in concrete with brass cap marked.	F.B. 469-7
8	Set 2" iron pipe in concrete with brass cap marked.	F.B. 469-64
9	Set 2" iron pipe in concrete with brass cap marked.	F.B. 469-64
10	Set 2" iron pipe in concrete with brass cap marked.	F.B. 469-64
11	Set 2" iron pipe in concrete with brass cap marked.	F.B. 469-64
12	Set 2" iron pipe in concrete with brass cap marked.	F.B. 469-64
13	Found 2" iron pipe, plug & lock replaced same with 2" iron pipe set in concrete with brass cap marked.	F.B. 469-7
14	Set 2" iron pipe in concrete with brass cap marked.	F.B. 469-64
15	Set 2" iron pipe in concrete with brass cap marked.	F.B. 469-64
16	Found 2" iron pipe, plug & lock replaced same with 2" iron pipe set in concrete with brass cap marked.	F.B. 469-5
17	Set 2" iron pipe in concrete with brass cap marked.	F.B. 469-64
18	Set 2" iron pipe in concrete with brass cap marked.	F.B. 469-64
19	Set 2" iron pipe in concrete with brass cap marked.	F.B. 469-64
20	Set 2" iron pipe in concrete with brass cap marked.	F.B. 469-64
21	Set 2" iron pipe in concrete with brass cap marked.	F.B. 469-64
22	Set 2" iron pipe in concrete with brass cap marked.	F.B. 469-5
23	Set 2" iron pipe in concrete with brass cap marked.	F.B. 469-5
24	Located at record distance (75'±) from Station No. 3 par. 11, 12, 13, 14, 15, 16, 17, 18, 19, 20, 21, 22, 23, 24, 25, 26, 27, 28, 29, 30, 31, 32, 33, 34, 35, 36, 37, 38, 39, 40, 41, 42, 43, 44, 45, 46, 47, 48, 49, 50, 51, 52, 53, 54, 55, 56, 57, 58, 59, 60, 61, 62, 63, 64, 65, 66, 67, 68, 69, 70, 71, 72, 73, 74, 75, 76, 77, 78, 79, 80, 81, 82, 83, 84, 85, 86, 87, 88, 89, 90, 91, 92, 93, 94, 95, 96, 97, 98, 99, 100.	F.B. 469-4
25	Set 2" iron pipe in concrete with brass cap marked.	F.B. 469-4

STA NO.	DESCRIPTION	REFERENCE
26	Set 2" iron pipe in concrete with brass cap marked.	F.B. 469-63
27	Set 2" iron pipe in concrete with brass cap marked.	F.B. 469-63
28	Set 2" iron pipe in concrete with brass cap marked.	F.B. 469-64
29	Set 2" iron pipe in concrete with brass cap marked.	F.B. 469-64
30	Set 2" iron pipe in concrete with brass cap marked.	F.B. 469-64
31	Set 2" iron pipe in concrete with brass cap marked.	F.B. 469-3
32	Located by intersection of line of Station No. 3 par. 11, 12, 13, 14, 15, 16, 17, 18, 19, 20, 21, 22, 23, 24, 25, 26, 27, 28, 29, 30, 31, 32, 33, 34, 35, 36, 37, 38, 39, 40, 41, 42, 43, 44, 45, 46, 47, 48, 49, 50, 51, 52, 53, 54, 55, 56, 57, 58, 59, 60, 61, 62, 63, 64, 65, 66, 67, 68, 69, 70, 71, 72, 73, 74, 75, 76, 77, 78, 79, 80, 81, 82, 83, 84, 85, 86, 87, 88, 89, 90, 91, 92, 93, 94, 95, 96, 97, 98, 99, 100.	F.B. 469-3
33	Set 2" iron pipe in concrete with brass cap marked.	F.B. 432-125
34	Set 2" iron pipe in concrete with brass cap marked.	F.B. 469-3
35	Set 2" iron pipe in concrete with brass cap marked.	F.B. 469-3
36	Set 2" iron pipe in concrete with brass cap marked.	F.B. 432-125
37	Set 2" iron pipe in concrete with brass cap marked.	F.B. 469-3
38	Set 2" iron pipe in concrete with brass cap marked.	F.B. 469-3
39	Set 2" iron pipe in concrete with brass cap marked.	F.B. 469-16
40	Set 2" iron pipe in concrete with brass cap marked.	F.B. 469-17
41	Set 2" iron pipe in concrete with brass cap marked.	F.B. 469-16
42	Set 2" iron pipe in concrete with brass cap marked.	F.B. 469-16
43	Set 2" iron pipe in concrete with brass cap marked.	F.B. 469-16
44	Located at record distance (75'±) from Station No. 3 par. 11, 12, 13, 14, 15, 16, 17, 18, 19, 20, 21, 22, 23, 24, 25, 26, 27, 28, 29, 30, 31, 32, 33, 34, 35, 36, 37, 38, 39, 40, 41, 42, 43, 44, 45, 46, 47, 48, 49, 50, 51, 52, 53, 54, 55, 56, 57, 58, 59, 60, 61, 62, 63, 64, 65, 66, 67, 68, 69, 70, 71, 72, 73, 74, 75, 76, 77, 78, 79, 80, 81, 82, 83, 84, 85, 86, 87, 88, 89, 90, 91, 92, 93, 94, 95, 96, 97, 98, 99, 100.	F.B. 469-16
45	Set 2" iron pipe in concrete with brass cap marked.	F.B. 469-15
46	Set 2" iron pipe in concrete with brass cap marked.	F.B. 469-15

STA NO.	DESCRIPTION	REFERENCE
47	Set 2" iron pipe in concrete with brass cap marked.	F.B. 469-15
48	Set 2" iron pipe in concrete with brass cap marked.	F.B. 469-15
49	Set 2" iron pipe in concrete with brass cap marked.	F.B. 469-15
50	Set 2" iron pipe in concrete with brass cap marked.	F.B. 469-15
51	Set 2" iron pipe in concrete with brass cap marked.	F.B. 469-15
52	Set 2" iron pipe in concrete with brass cap marked.	F.B. 469-14
53	Set 2" iron pipe in concrete with brass cap marked.	F.B. 469-14
54	Set 2" iron pipe in concrete with brass cap marked.	F.B. 469-14
55	Set 2" iron pipe in concrete with brass cap marked.	F.B. 469-14
56	Set 2" iron pipe in concrete with brass cap marked.	F.B. 469-14
57	Set 2" iron pipe in concrete with brass cap marked.	F.B. 469-14
58	Set 2" iron pipe in concrete with brass cap marked.	F.B. 469-14
59	Set 2" iron pipe in concrete with brass cap marked.	F.B. 469-14
60	Set 2" iron pipe in concrete with brass cap marked.	F.B. 469-14
61	Set 2" iron pipe in concrete with brass cap marked.	F.B. 469-14
62	Set 2" iron pipe in concrete with brass cap marked.	F.B. 469-14
63	Set 2" iron pipe in concrete with brass cap marked.	F.B. 469-14
64	Set 2" iron pipe in concrete with brass cap marked.	F.B. 469-14
65	Set 2" iron pipe in concrete with brass cap marked.	F.B. 469-14
66	Set 2" iron pipe in concrete with brass cap marked.	F.B. 469-14
67	Set 2" iron pipe in concrete with brass cap marked.	F.B. 469-14
68	Set 2" iron pipe in concrete with brass cap marked.	F.B. 469-14
69	Set 2" iron pipe in concrete with brass cap marked.	F.B. 469-14
70	Set 2" iron pipe in concrete with brass cap marked.	F.B. 469-14
71	Set 2" iron pipe in concrete with brass cap marked.	F.B. 469-14
72	Set 2" iron pipe in concrete with brass cap marked.	F.B. 469-14
73	Set 2" iron pipe in concrete with brass cap marked.	F.B. 469-14
74	Set 2" iron pipe in concrete with brass cap marked.	F.B. 469-14
75	Set 2" iron pipe in concrete with brass cap marked.	F.B. 469-14
76	Set 2" iron pipe in concrete with brass cap marked.	F.B. 469-14
77	Set 2" iron pipe in concrete with brass cap marked.	F.B. 469-14
78	Set 2" iron pipe in concrete with brass cap marked.	F.B. 469-14
79	Set 2" iron pipe in concrete with brass cap marked.	F.B. 469-14
80	Set 2" iron pipe in concrete with brass cap marked.	F.B. 469-14
81	Set 2" iron pipe in concrete with brass cap marked.	F.B. 469-14
82	Set 2" iron pipe in concrete with brass cap marked.	F.B. 469-14
83	Set 2" iron pipe in concrete with brass cap marked.	F.B. 469-14
84	Set 2" iron pipe in concrete with brass cap marked.	F.B. 469-14
85	Set 2" iron pipe in concrete with brass cap marked.	F.B. 469-14
86	Set 2" iron pipe in concrete with brass cap marked.	F.B. 469-14
87	Set 2" iron pipe in concrete with brass cap marked.	F.B. 469-14
88	Set 2" iron pipe in concrete with brass cap marked.	F.B. 469-14
89	Set 2" iron pipe in concrete with brass cap marked.	F.B. 469-14
90	Set 2" iron pipe in concrete with brass cap marked.	F.B. 469-14
91	Set 2" iron pipe in concrete with brass cap marked.	F.B. 469-14
92	Set 2" iron pipe in concrete with brass cap marked.	F.B. 469-14
93	Set 2" iron pipe in concrete with brass cap marked.	F.B. 469-14
94	Set 2" iron pipe in concrete with brass cap marked.	F.B. 469-14
95	Set 2" iron pipe in concrete with brass cap marked.	F.B. 469-14
96	Set 2" iron pipe in concrete with brass cap marked.	F.B. 469-14
97	Set 2" iron pipe in concrete with brass cap marked.	F.B. 469-14
98	Set 2" iron pipe in concrete with brass cap marked.	F.B. 469-14
99	Set 2" iron pipe in concrete with brass cap marked.	F.B. 469-14
100	Set 2" iron pipe in concrete with brass cap marked.	F.B. 469-14

STA NO.	DESCRIPTION	REFERENCE
82	Set 2" iron pipe in concrete with brass cap marked.	F.B. 469-14
83	Set 2" iron pipe in concrete with brass cap marked.	F.B. 469-14
84	Set 2" iron pipe in concrete with brass cap marked.	F.B. 469-14
85	Set 2" iron pipe in concrete with brass cap marked.	F.B. 469-14
86	Set 2" iron pipe in concrete with brass cap marked.	F.B. 469-14
87	Set 2" iron pipe in concrete with brass cap marked.	F.B. 469-14
88	Set 2" iron pipe in concrete with brass cap marked.	F.B. 469-14
89	Set 2" iron pipe in concrete with brass cap marked.	F.B. 469-14
90	Set 2" iron pipe in concrete with brass cap marked.	F.B. 469-14
91	Set 2" iron pipe in concrete with brass cap marked.	F.B. 469-14
92	Set 2" iron pipe in concrete with brass cap marked.	F.B. 469-14
93	Set 2" iron pipe in concrete with brass cap marked.	F.B. 469-14
94	Set 2" iron pipe in concrete with brass cap marked.	F.B. 469-14
95	Set 2" iron pipe in concrete with brass cap marked.	F.B. 469-14
96	Set 2" iron pipe in concrete with brass cap marked.	F.B. 469-14
97	Set 2" iron pipe in concrete with brass cap marked.	F.B. 469-14
98	Set 2" iron pipe in concrete with brass cap marked.	F.B. 469-14
99	Set 2" iron pipe in concrete with brass cap marked.	F.B. 469-14
100	Set 2" iron pipe in concrete with brass cap marked.	F.B. 469-14



COUNTY OF LOS ANGELES
 MAP OF
LOS ANGELES COUNTY FAIRGROUNDS
 AT
POMONA, CALIFORNIA
 COUNTY SURVEYORS MAP NO. B-2287
 SCALE: 1 INCH = 200 FT.

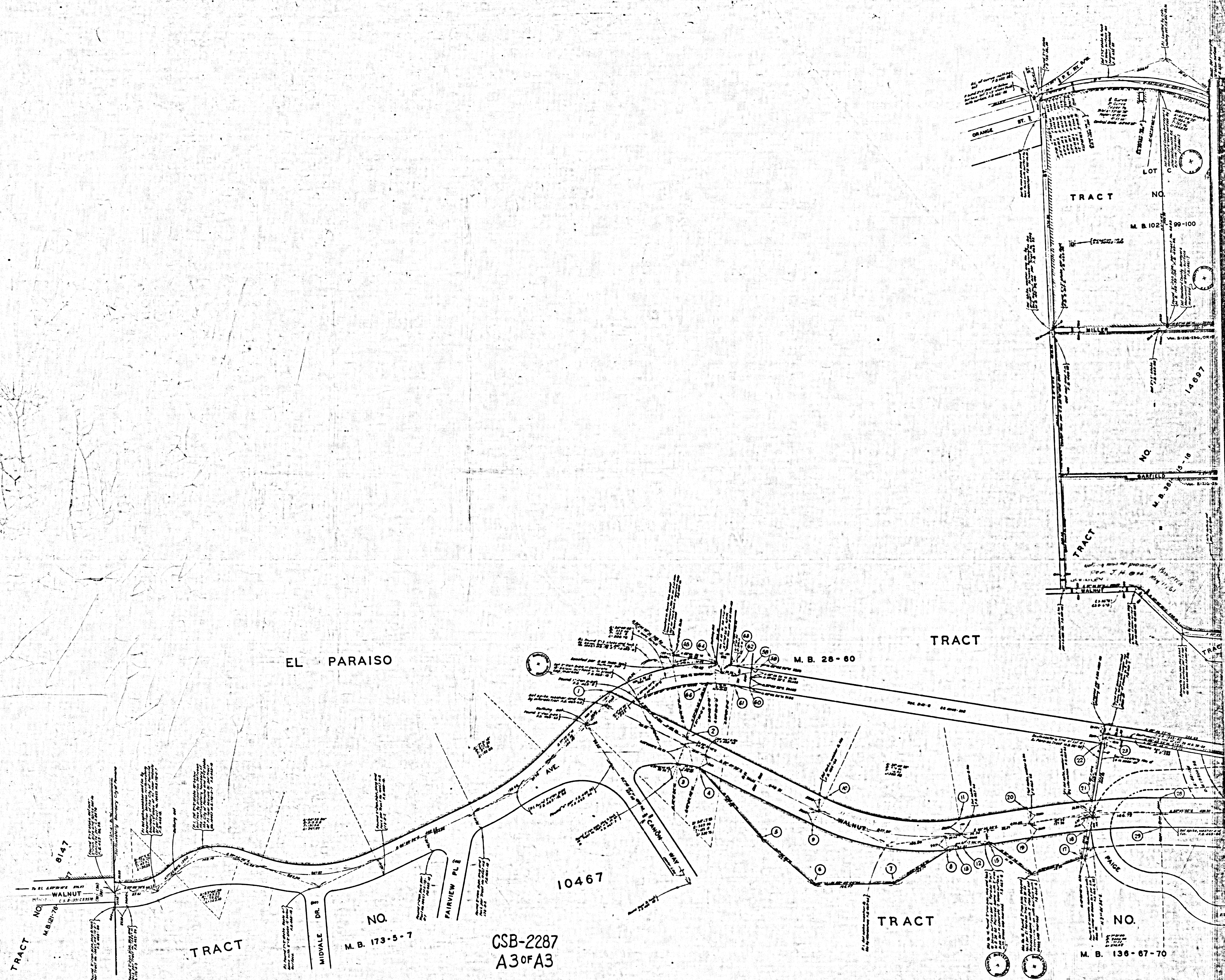
JOB NUMBER 9037
 WILLIAM J. FOX - COUNTY SURVEYOR
 SURVEYED 1931, 1934, & 1947
 SURVEYED ON REQUEST OF THE COUNTY
 FORESTER AND FIRE WARDEN UNDER PALEO-
 ORD. 8-28 OF LETTER DATED JAN. 28, 1934,
 AND BY BOARD ORDER DATED MAR. 8, 1934.
 BEARINGS ARE BASED ON THE CALIFORNIA
 COORDINATE SYSTEM ZONE 7 PER ACT 8391
 GENERAL LAWS. SEE C.S. 9429
 F.B. 469-1-104
 FIELD WORK BY H.S. JOHNSON
 H.F. EVANS
 OFFICE WORK BY C.A. CROWL,
 C.E. BROWN
 CHECKED BY B.M. FINLEY,
 R.A. WILKINSON,
 S.H. MILLER

THIS MAP SUPERCEDES C.S.B-879

CSB-2287
 A1 of A3

THIS MAP SUPERCEDES C.S.B-879

CLASS B ON SAN ZOOYVREUZ YTHUOC



CSB-2287
A3 of A3