

CLARENCE H. THURBER PARK
 LOMA ALTA PARK
 COUNTY OF LOS ANGELES
 MAP OF
 WEST ALTADENA PARK
 BEING
 A PORTION OF LOTS 2 AND 8 OF
 FRAC. SECTION 5 OF T.1N. R.12W.

COUNTY SURVEYORS MAP NO. B-2288
 SCALE: 1 INCH = 100 FT.

JOB NUMBER 8400

WILLIAM J. FOX - COUNTY SURVEYOR
 SURVEYED FEB - SEPT. 1951

SURVEYED ON REQUEST OF THE DIRECTOR
 OF PARKS AND RECREATION UNDER SEC. 79
 ORD. 4099 BY LETTER DATED SEPT. 13, 1950.
 BEARINGS ARE BASED ON THE CALIFORNIA
 COORDINATE SYSTEM ZONE 7 PER CHAPTER
 1307, STATUTES 1947. SEE C.S. 9423.

F. B. 1062-15 TO 45
 FIELD WORK BY C.A. BENSON
 OFFICE WORK BY C.E. DROWN
 CHECKED BY D.M. FINLEY

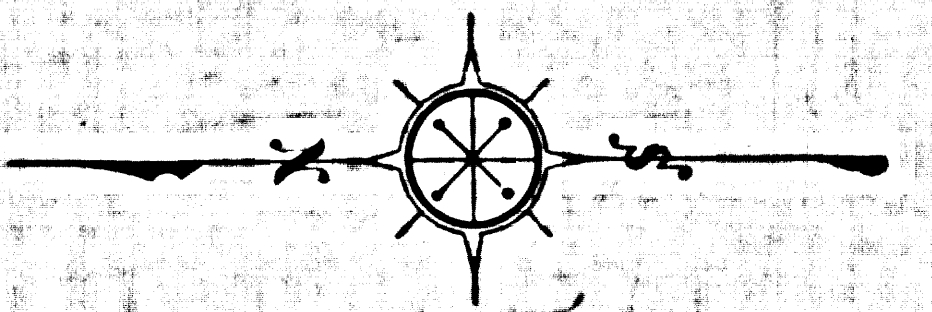
Name change adopted by Board of Supervisors - 1951, Dec. 20, 1951
 June 1, 1952-56
 Name changed July 1952 by R. J. [unclear]
 per Board of Supervisors March 21, 1953

1 M. 83

CSB-2288
 A1 OF A4

COUNTY SURVEYORS MAP NO. B-2288

COUNTY SURVEYORS MAP NO. B-2288

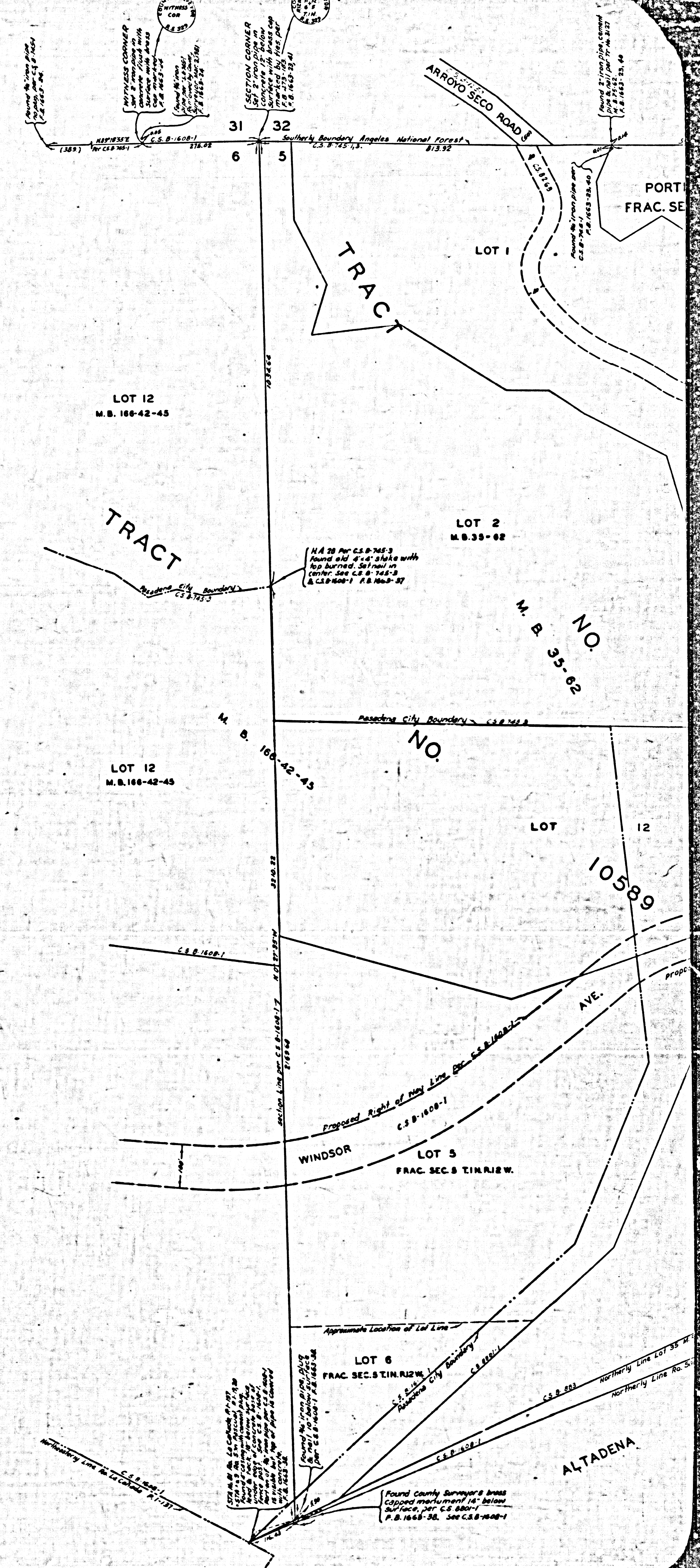


MARGINAL MAP
 SHOWING
 TOPOGRAPHY
 SCALE: 1 INCH = 20 FT.
 PLANE TABLE SHEETS E-301, E-302
 FIELD WORK BY..... W. E. BRADEN
 OFFICE WORK BY..... M. H. F. DONG
 R. E. SNYDER
 CHECKED BY..... C. J. GALLI

DATUM - MEAN SEA LEVEL
 ELEVATIONS SHOWN HEREON ARE BASED UPON
 B.M. A.C. 418 (Elev. 1298.916) THE ELEVATION OF
 WHICH WAS DETERMINED FROM THE 1934 U.S.C.
 A.G.S. ADJUSTMENT OF U.S.C. & G.S. B.M.'S "X-172"
 1934' (U.S. 2939) AND "Y-172-1934" (U.S. 2940)

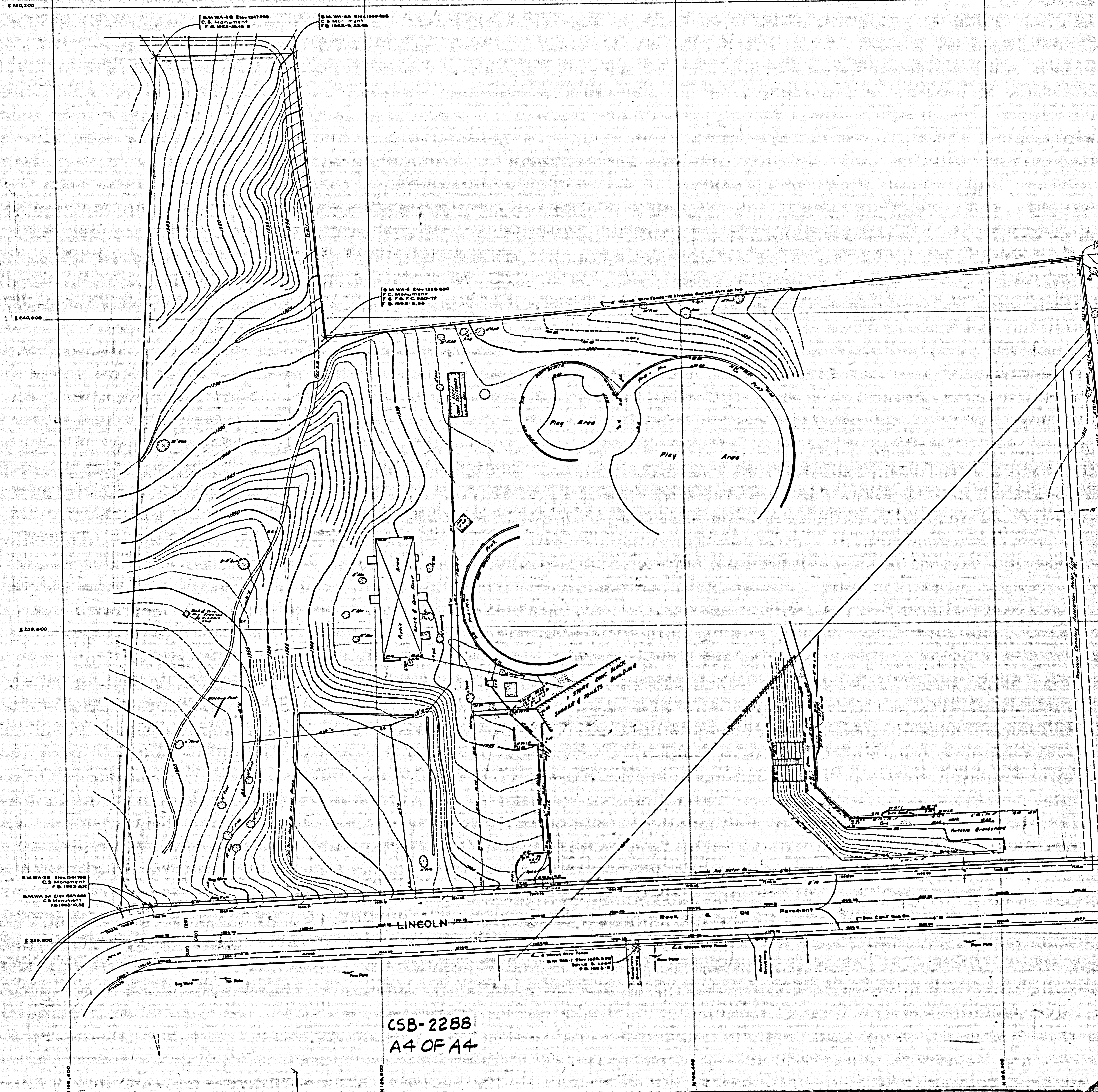
Revised Feb. 1955 by V. Ho from field data
 taken on Aug. 1954 under J.N. 0054 82
 Revised Sept. 1958 by T.H. Bane

CSB-2288
 A3 OF A4



8855-B OM 9AM 8ROYVRUE YTHAUCO

8855-B OM 9AM 8ROYVRUE YTHAUCO



CSB-2288
A4 OF A4