

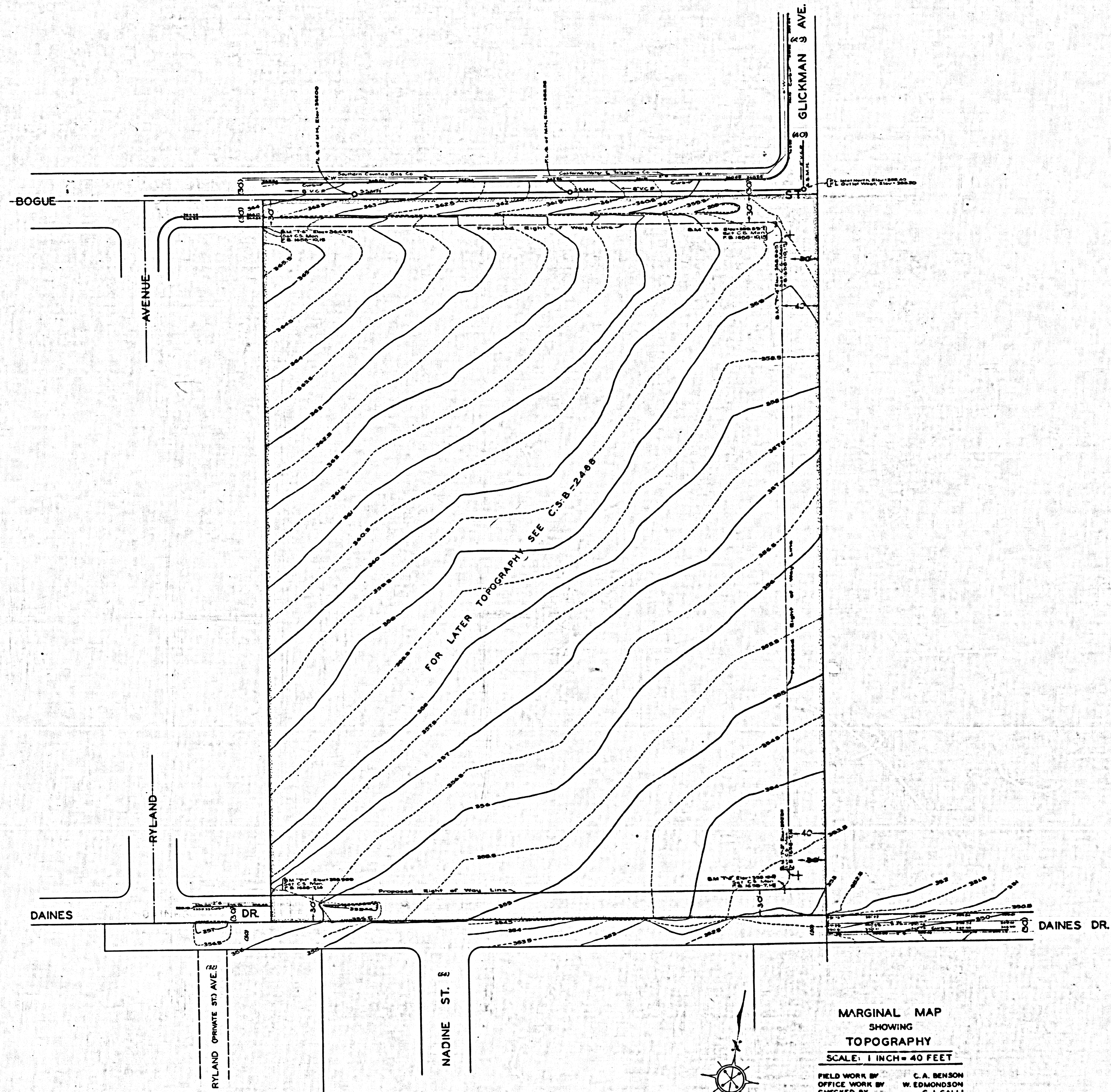
COUNTY OF LOS ANGELES  
 MAP OF  
**LIVE OAK PARK**  
 BEING A PORTION OF  
**TRACT No 57 M.B. 14 - 67**  
 COUNTY SURVEYORS MAP No 9-2289  
 SCALE = 1 INCH = 100 FT.

JOB NUMBER 8611  
 WILLIAM J. FOX - COUNTY SURVEYOR  
 SURVEYED DECEMBER 1950  
 SURVEYED ON REQUEST OF THE DIRECTOR PARKS AND  
 RECREATION UNDER SEC 79, ORD. 4089, BY LETTER  
 DATED OCT 25, 1950  
 BEARINGS ARE BASED ON THE BEARING OF  
 BALDWIN AVE. PER C.S.B.-111 SHEET No 2  
 F.B. 1658-1-50  
 FIELD WORK BY C.A. BENSON  
 OFFICE WORK BY..... L.C. WILSON  
 CHECKED BY A.H. DRIZ  
 INDEX = 44  
 Acreage added 10-28-50 ctd.  
 FOR LATER TOPOGRAPHY SEE CSB-2488  
 Name established by Board Order - Min. Ct. 408-107 See E. 158-248  
 281-1521 by M.B. 14000-1-50

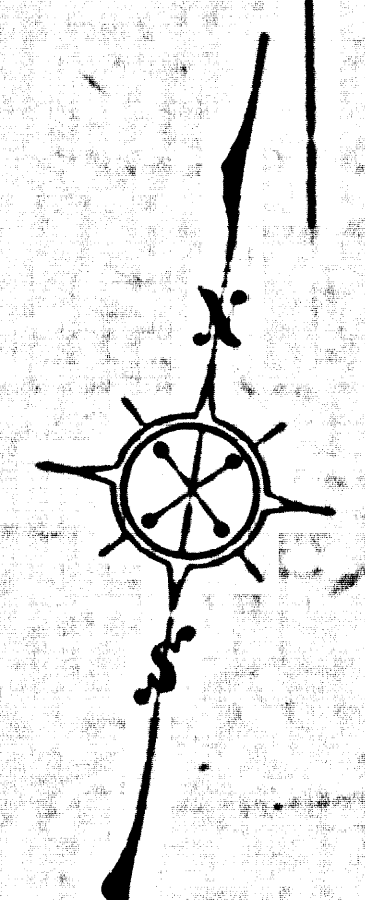
CSB-2289  
 A1 OF A2

COMPLY SUBVERSIVE MAP NO B-5586

COMPLY SUBVERSIVE MAP NO B-5586



CSB-2289-  
A2 OF A2



MARGINAL MAP  
SHOWING  
TOPOGRAPHY  
SCALE: 1 INCH = 40 FEET

FIELD WORK BY C. A. BENSON  
OFFICE WORK BY W. EDMONDSON  
CHECKED BY C. J. GALLI

F.B. 1458

DATUM - MEAN SEA LEVEL

ELEVATIONS SHOWN HEREON ARE BASED UPON B.M. "TE-28"  
F.B. 1458-27 THE ELEVATION OF WHICH WAS DETERMINED  
FROM THE U.S.C. & G.S. B.M. "L-99" (U.S. 2824) BASED ON  
THE U.S.C. & G.S. ADJUSTMENT OF 1924.

NOTE:  
FOR ADOPTED GRADES OF FUTURE STREETS SEE ROAD DEPT.  
PLANS M.A. 5746 OR SURVEY DIVISION MAP NO. 133-38.

Revised May 28, 1952 - V.110  
Revised April 1950 - W. Weber

