

COUNTY OF LOS ANGELES  
 MAP OF  
**PROPOSED PARKING LOT**  
**PASADENA COURTS BUILDING**  
 BEING  
 PORTION OF LOT 7 BLOCK-C.  
 SAN PASQUAL TRACT-MR3-315.  
 IN VICINITY OF  
**PASADENA CIVIC CENTER**  
 COUNTY SURVEYORS MAP NO. 2290  
 SCALE - 1 INCH = 50 FT.

JOB NUMBER 5074  
 C.E. ARNOLD - COUNTY SURVEYOR.  
 SURVEYED JAN. - FEB. 1951.  
 SURVEYED UNDER INSTRUCTIONS OF THE  
 BOARD OF SUPERVISORS PER ORDER DATED  
 OCT. 31-1950  
 BEARINGS ARE BASED ON THE BEARING OF  
 GARFIELD AVE AS SHOWN ON THE MAP OF  
 PASADENA CIVIC CENTER PER M.B. 181-13.  
 E.B. 1100 - 51 - 65

INDEX 8  
 FIELD WORK BY C.A. BENSON  
 OFFICE WORK BY M.M. HIGGINS  
 CHECKED BY A.M. DREW.  
 FOR TOPOGRAPHY SEE C.S.B. 2310  
 Revised May 1951  
 FOR LATER TOPOGRAPHY SEE SURVEY DIVISION MAP FILE NO. P.T. 181-A

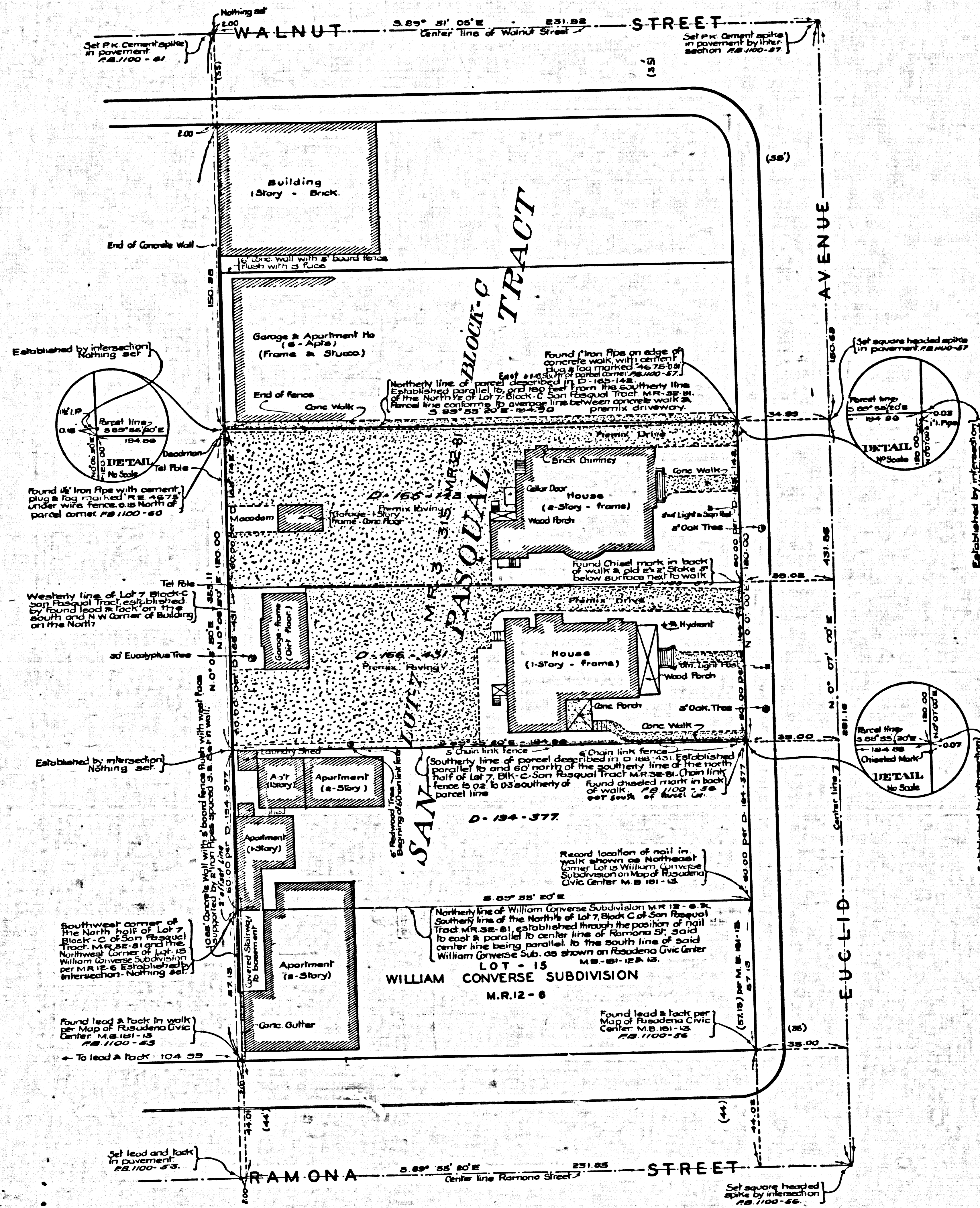
CSB-2290  
 A1 OF A2

GESS-B ON 9AM 28373V-UE YTHUOD

GESS-B ON 9AM 28373V-UE YTHUOD

CONSULT ENGINEERS MAP NO. B-5580

CONSULT ENGINEERS MAP NO. B-5580



MARGINAL MAP  
SHOWING  
IMPROVEMENTS & DETAIL OF  
DETERMINATION OF PARCEL  
LINES ON PROPERTY TO BE  
ACQUIRED BY L. A. COUNTY  
SCALE 1 INCH = 20 FEET

CSB-2290  
A2 OF A2

