

COUNTY OF LOS ANGELES  
 MAP OF  
**SAN FRANCISQUITO CANYON ROAD**  
 FROM  
 SOUTHERLY LINE SECTION 14, T.5N., R.16W.  
 TO  
 SPUNKY CANYON ROAD  
 COUNTY SURVEYORS MAP NO. B-2500  
 SHEET NO. 3 OF 5 SHEETS  
 SCALE: 1 INCH = 100 FT.

JOB NUMBER 0903.22  
 WILLIAM J. FOX - COUNTY SURVEYOR  
 SURVEYED 1952 - 1954  
 SURVEYED ON REQUEST OF THE  
 ROAD COMMISSIONER UNDER SEC. 79, ORD. 4099  
 BY REQUISITION NO. 396-W  
 DATED SEPT. 11, 1951  
 BEARINGS ARE BASED ON THE CALIFORNIA  
 COORDINATE SYSTEM ZONE 7 PER ACT 838  
 GENERAL LAWS SEE C.S. 9423  
 F.B. 1629-5-151, F.B. 1975-21-282  
 FIELD WORK BY L.V. SMITH  
 OFFICE WORK BY R.L. GREEN  
 CHECKED BY K.R. M'PHERSON 1.14.78 77

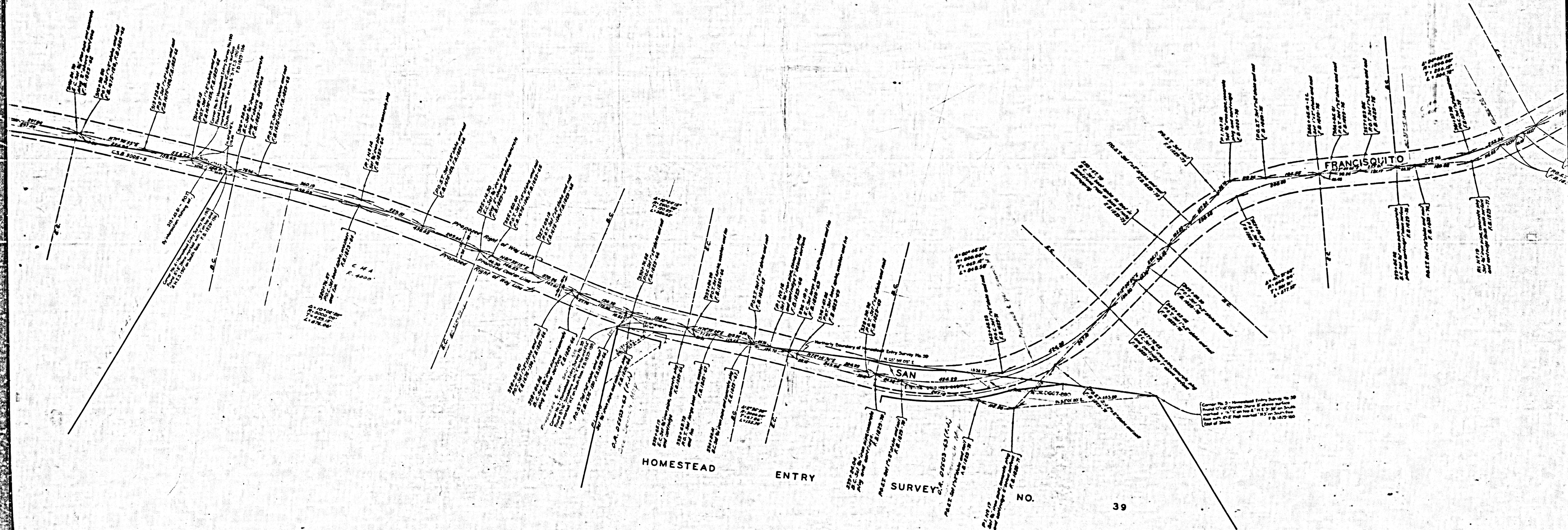
REVISED AUG 1955 BY S.S.  
 Revised by G.L. Aug 1962

FOR TOPOGRAPHY SEE C.S.B-2340-3, 4 & 5

NOTE: THIS ALIGNMENT CHANGED FROM SECONDARY  
 TO MAJOR HIGHWAY BY AMENDMENT NO. 442 TO THE  
 MASTER PLAN OF HIGHWAYS. BD. APPROVED MARCH 2, 1961.

CSB-2500-3  
 A1 OF A 4

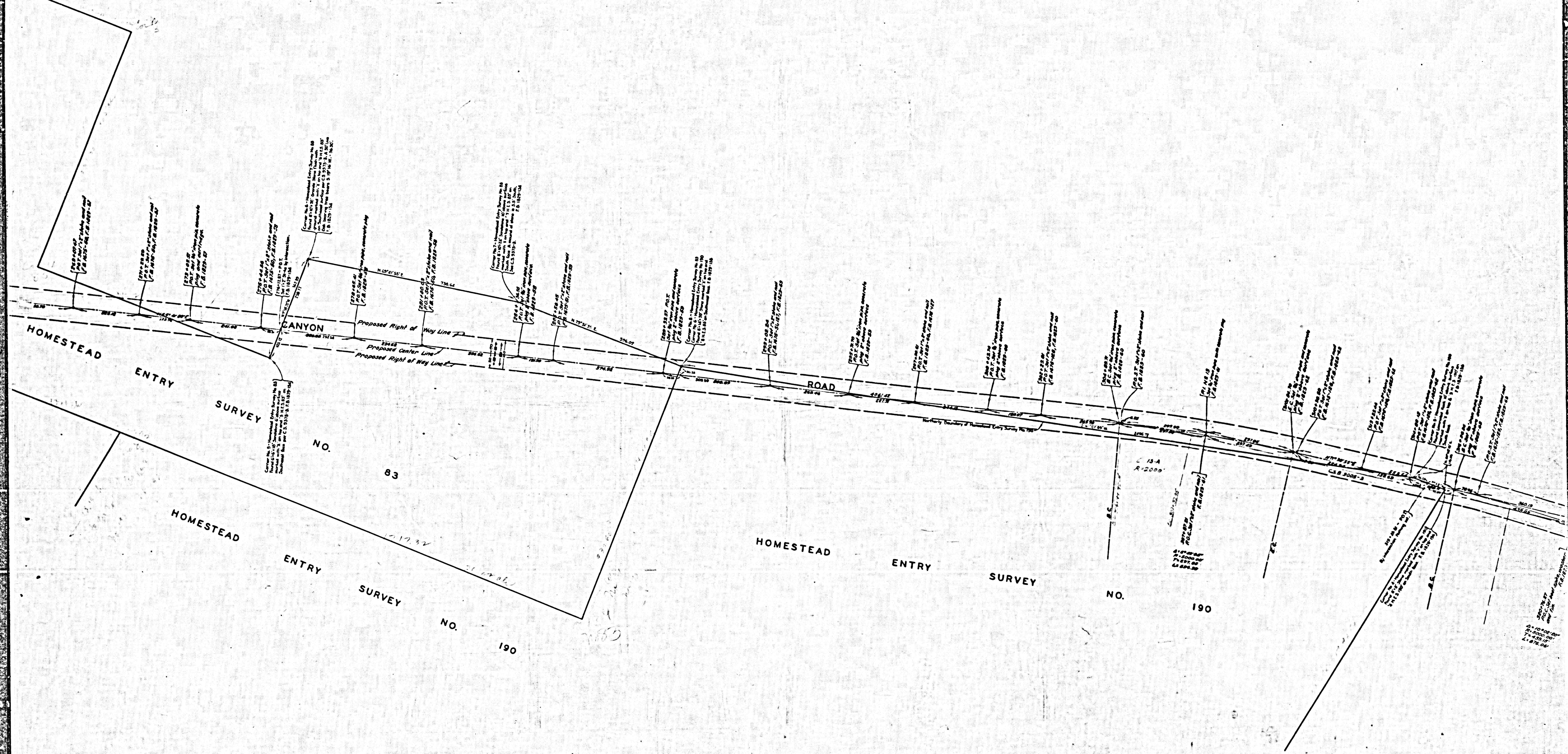
No. 5 - Horizontal Curve Data for 50  
 and 125' of Quarter Section 14 shown on map  
 and with 'Y' on top & 'N.E.' on South  
 with 'E' on East & 'S.W.' on South  
 of all other.



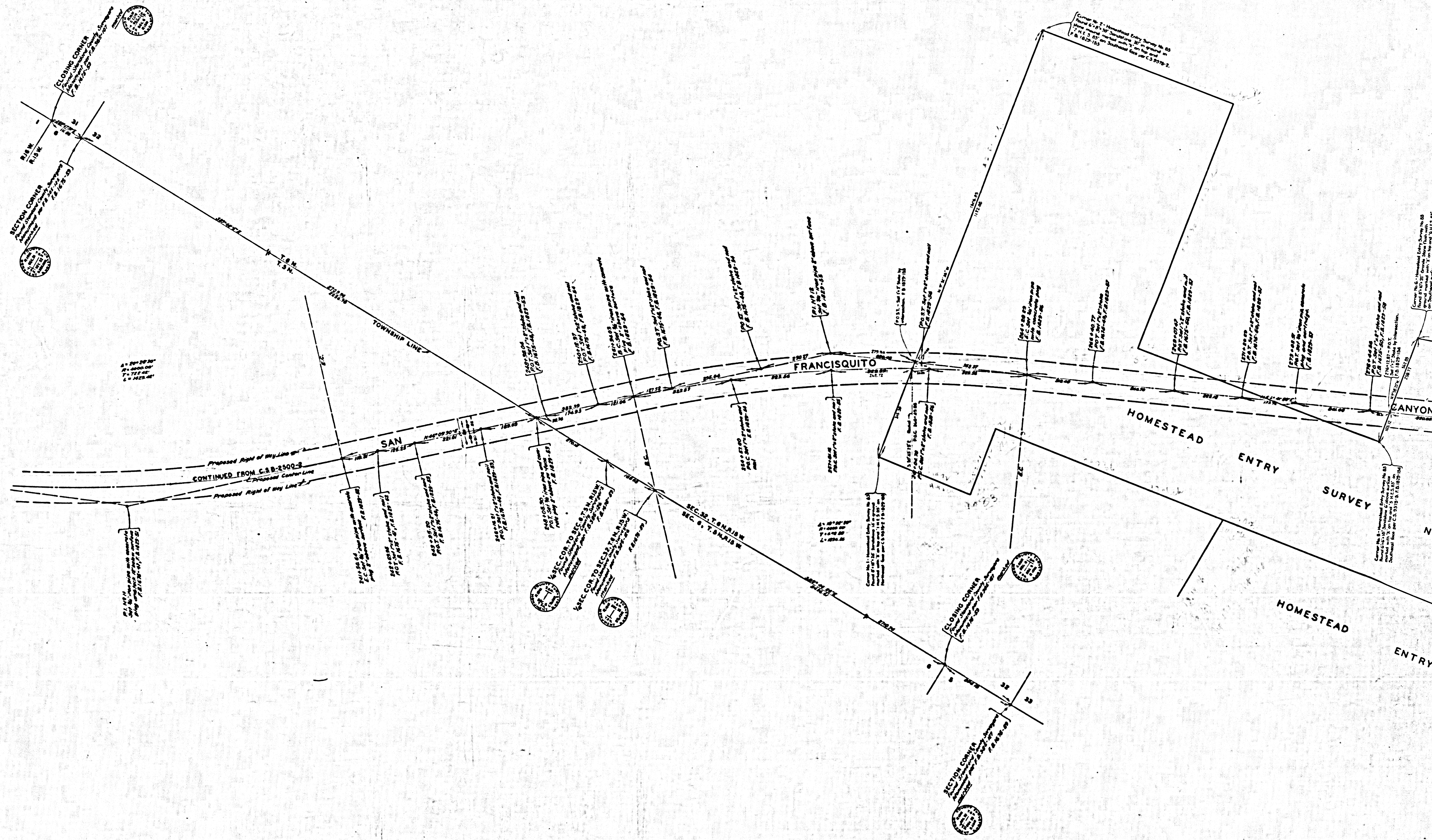
39

CSB-25003  
A2 OF A 4

Homestead Entry Survey No. 83  
Homestead Entry Survey No. 190  
Homestead Entry Survey No. 190



CSB-2500-3  
A30FA4



CSB-2500-3  
A40FA4

SHEET NO. 3 OF 3 SHEETS  
CANNON SURVEYING CO. S.F. CALIF.