

COUNTY OF LOS ANGELES  
 MAP OF  
**SAN FRANCISQUITO CANYON ROAD**  
 FROM  
 SOUTHERLY LINE SECTION 14.T.5N.,R.16W.  
 TO  
**SPUNKY CANYON ROAD**

COUNTY SURVEYORS MAP NO. B-2500  
 SHEET NO. 4 OF 5 SHEETS  
 SCALE: - 1 INCH = 100 FT.

JOB NUMBER 0903.22  
 WILLIAM J FOX - COUNTY SURVEYOR  
 SURVEYED 1952 - 1954

SURVEYED ON REQUEST OF THE  
 ROAD COMMISSIONER UNDER SEC. 79, ORD. 4099  
 BY REQUISITION NO. 398-W  
 DATED SEPT. 11, 1951

BEARINGS ARE BASED ON THE CALIFORNIA  
 COORDINATE SYSTEM ZONE 7, PER ACT 8351  
 GENERAL LAWS SEE C.S. 9423

F. B. 1829-5-151, F. B. 1875-21-282

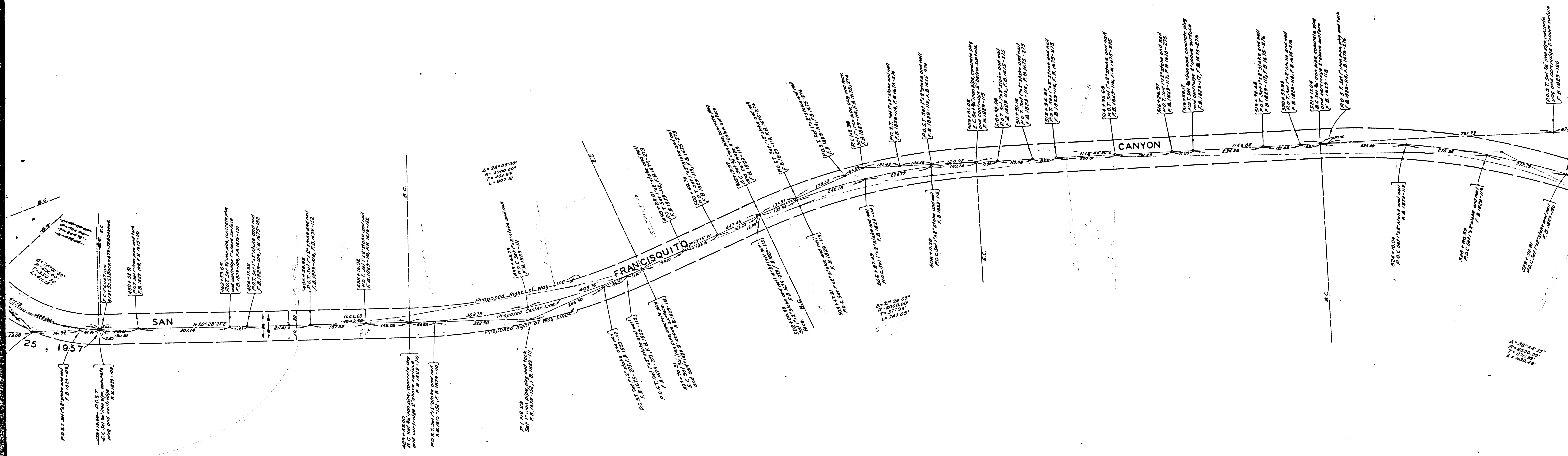
FIELD WORK BY L.V. SMITH  
 OFFICE WORK BY R.L. GREEN  
 CHECKED BY K.R.M. PHERSON

REVISIONS:  
 1. REVISED BY T.M.L. 1955  
 2. REVISED BY R.L.G. OCT. 1957  
 3. REVISED BY T.M.L. AUG. 1962

FOR TOPOGRAPHY SEE C.S.B.-2340-5, 6 & 7

NOTE: THIS ALIGNMENT CHANGED FROM SECONDARY TO MAJOR HIGHWAY BY AMENDMENT NO. 442 TO THE MASTER PLAN OF HIGHWAYS. BD. APPROVED MARCH 2, 1961.

CSB-2500-4  
 A10FA4



CSB-2500-4  
A20FA4

AUGUST 1962

ENGINEER

BY THE COUNTY

ADOPTED

ALIGNMENT

AUGUST 1962

THIS

ALIGNMENT

THIS ALIGNMENT ABANDONED BY COUNTY ENGINEER SEPT. 1955

ENGINEER

COUNTY

BY THE

ABANDONED

ALIGNMENT

ABANDONED BY COUNTY ENGINEER SEPT. 1955 AUG. 1962 FOR ADOPTED ALIGNMENT SEE ABOVE

ENGINEER

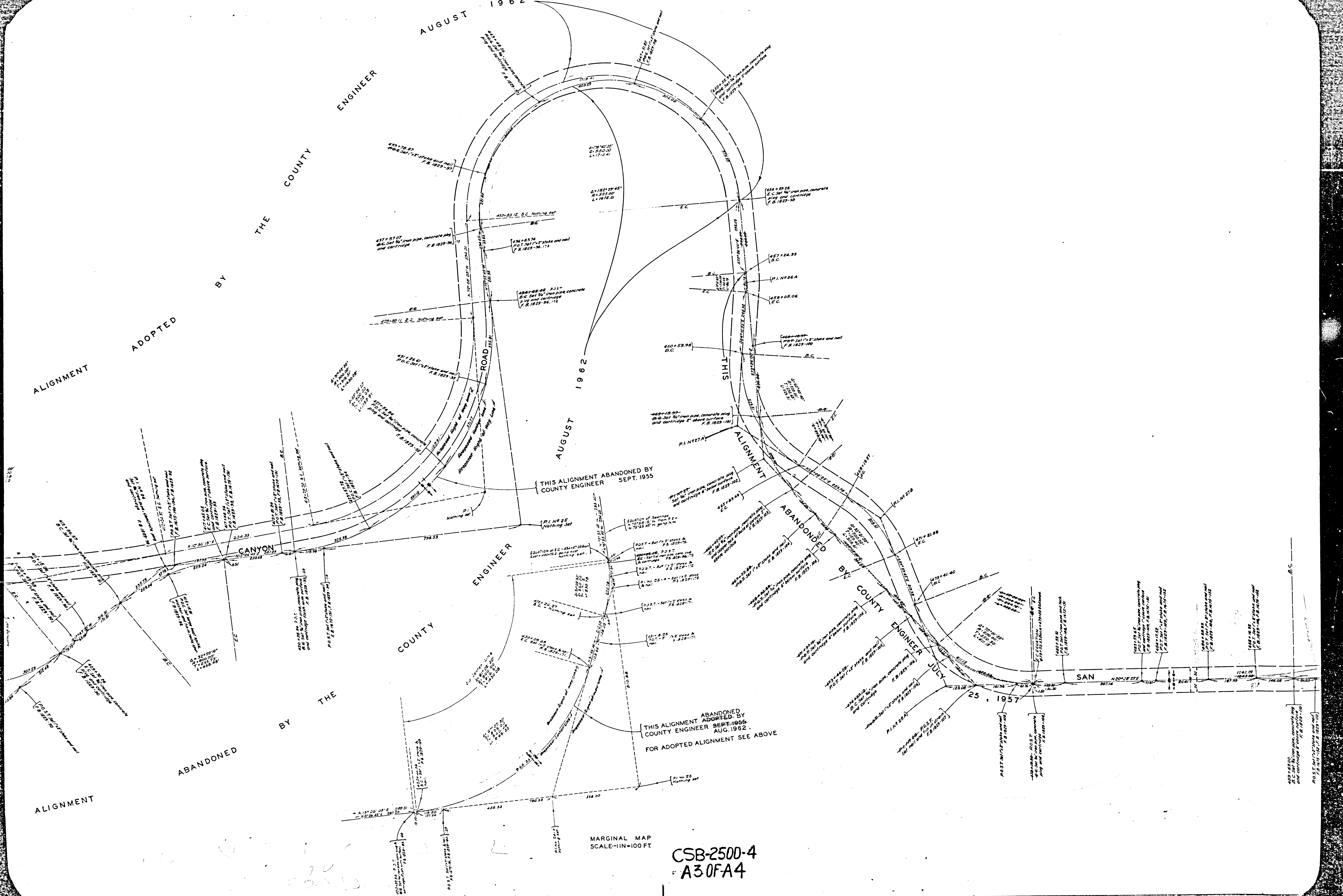
BY THE COUNTY

JULY 25, 1957

SAN

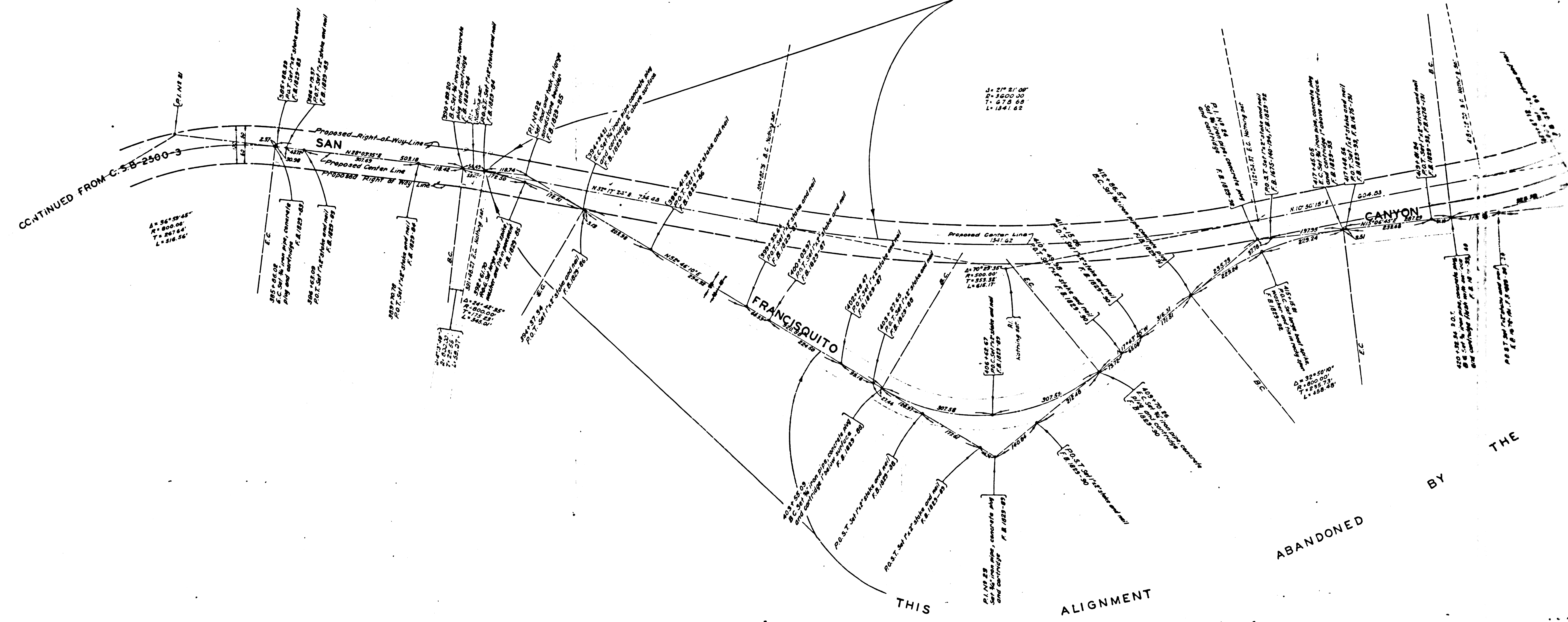
MARGINAL MAP SCALE=1IN=100 FT.

CSB-2500-4 A30FA4



CSB-2500-4  
SHEET NO. 4 OF 2 SHEETS  
CONILLA STRAIGHTWAY MAP NO. B-2500

CC-TINUED FROM C-5B-2500-3



ADOPTED BY THE COUNTY ENGINEER

CSB-2500-4  
A4.0FA.4