

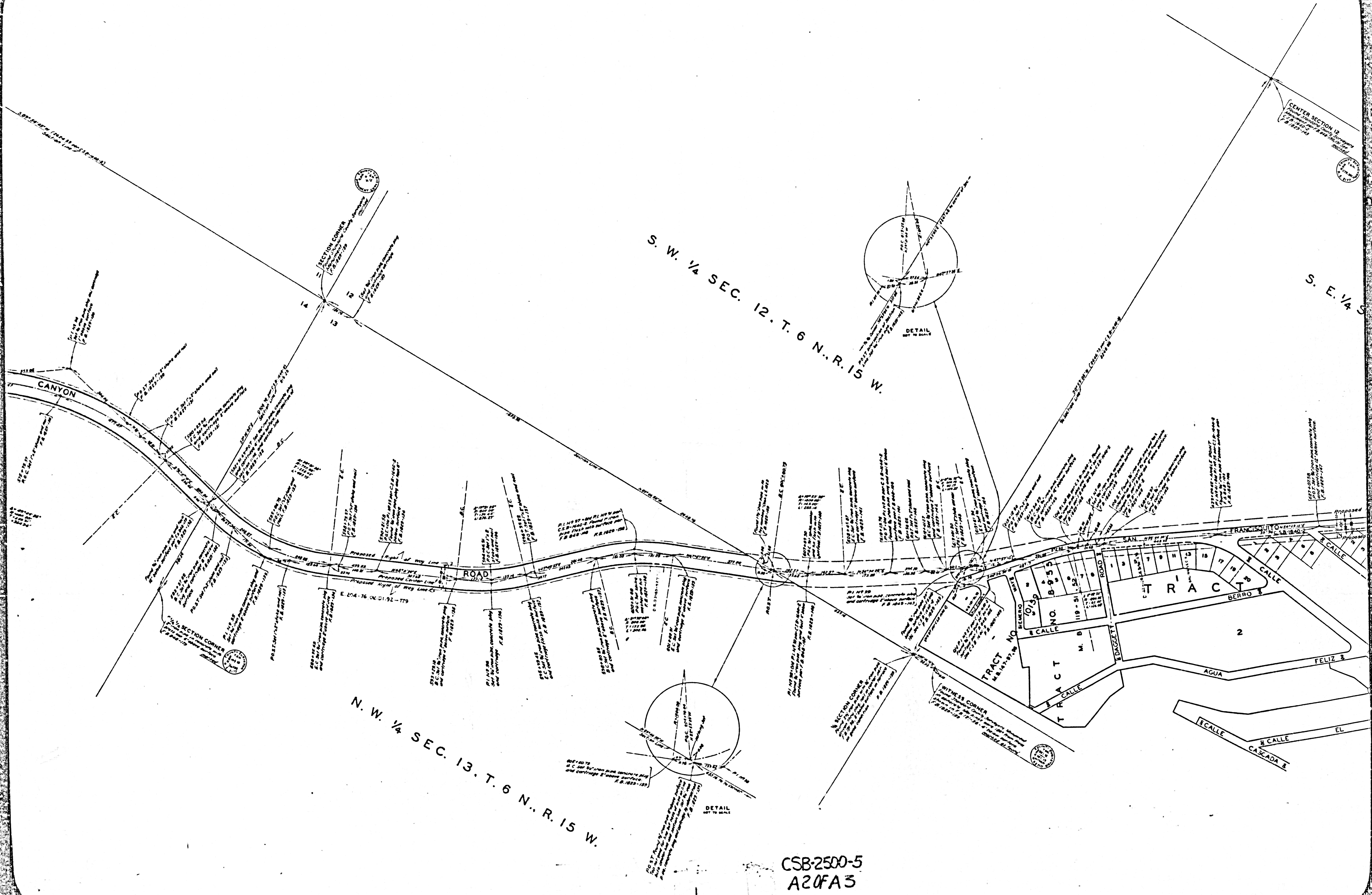
COUNTY OF LOS ANGELES
 MAP OF
SAN FRANCISQUITO CANYON ROAD
 FROM
 SOUTHERLY LINE SECTION 14. T. 5 N. R. 16 W.
 TO

SPUNKY CANYON ROAD
 COUNTY SURVEYORS MAP NO. B-2500
 SHEET NO. 5 OF 5 SHEETS
 SCALE: 1 INCH = 100 FT.

JOB NUMBER 0903.22
 WILLIAM J. FOX COUNTY SURVEYOR
 SURVEYED 1952 - 1954
 SURVEYED ON REQUEST OF THE
 ROAD COMMISSIONER UNDER SEC. 79, ORD. 4099
 BY REQUISITION NO. 396-W
 DATED SEPT. 11, 1951
 BEARINGS ARE BASED ON THE CALIFORNIA
 COORDINATE SYSTEM ZONE 7 PER ACT 8334
 GENERAL LAWS SEE C.S. 9423
 F.B. 1029-5-151, F.D. 1075-21-202
 FIELD WORK BY L.V. SMITH
 OFFICE WORK BY R.L. GREEN
 CHECKED BY R.M. PEPERSON
 Revised by G.J.E. Aug. 1962

FOR TOPOGRAPHY SEE C.S.B. 2340-7,8
 NOTE: THIS ALIGNMENT CHANGED FROM SECONDARY
 TO MAJOR HIGHWAY BY AMENDMENT NO. 442 TO THE
 MASTER PLAN OF HIGHWAYS. BD. APPROVED MARCH 2, 1961.

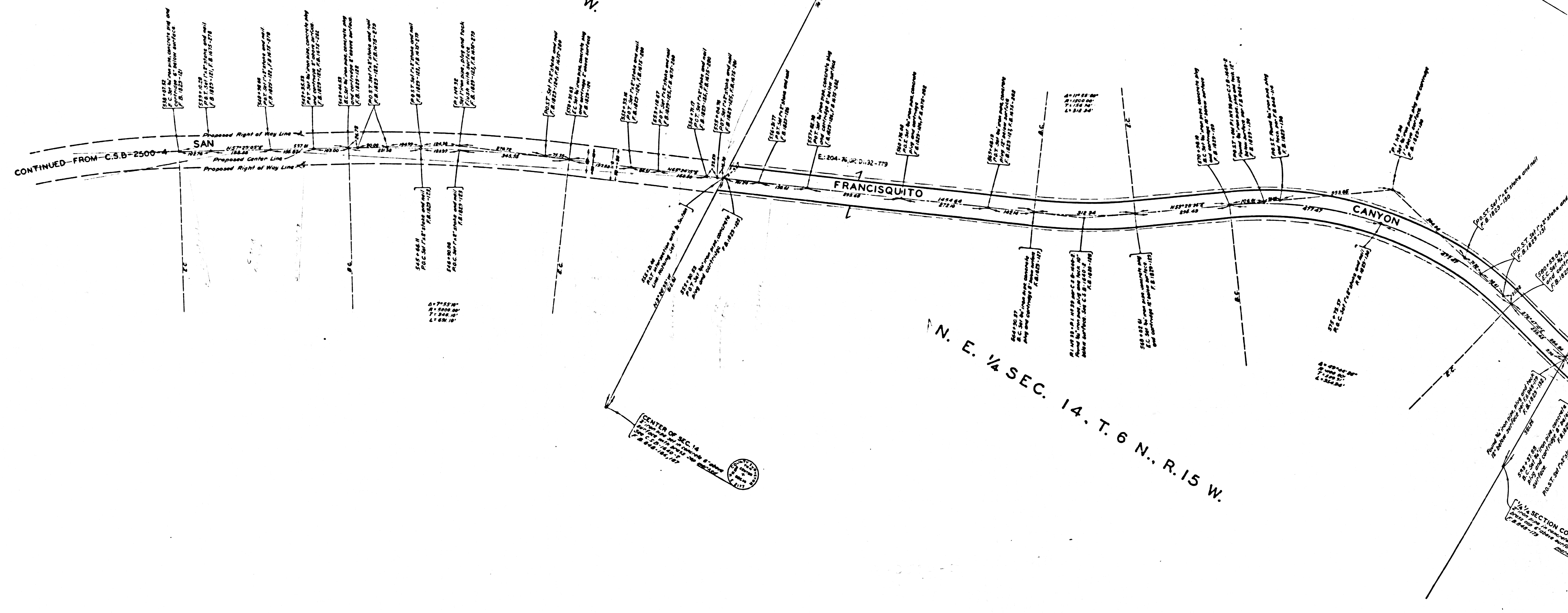
CSB-2500-5
 A10FA3



CSB-2500-5
A20FA3

COMPLA 21826A000

N. W. 1/4 SEC. 14. T. 6 N.. R. 15 W.



COMPLA 21826A000 SHEET NO 2 OF 2 SHEETS

CSB-2500-5
A30FA3