

COUNTY OF LOS ANGELES
 TOPOGRAPHIC MAP OF
LAKWOOD GOLF COURSE

COUNTY SURVEYORS MAP NO. B-2502
 SHEET NO. 2 OF 4 SHEETS
 SCALE 1 INCH = 40 FT.

JOB NUMBER 0054.77

JOHN A. LAMBIE COUNTY ENGINEER
 SURVEYED FEB. 1955

SURVEYED ON REQUEST OF THE
 SUPERINTENDENT OF PARKS & RECREATION
 UNDER SEC. 79, ORD. 4099, BY LETTER
 DATED JUNE 10, 1954

BEARINGS ARE BASED ON THE BEARING
 OF CARSON ST. AS SHOWN ON C.S.B-613-3

P. B. 1853
 PLANE TABLE SHEETS E-433 E-434 E-435

FIELD WORK BY WE BRADEN
 OFFICE WORK BY T.M. PALMER
 CHECKED BY J.A. PATTON

DATUM - MEAN SEA LEVEL
 ELEVATIONS SHOWN HEREON ARE BASED ON THE
 LOS ANGELES COUNTY PRECISE LEVEL NET LINE &
 1952 ADJUSTMENT, U.S.C. & G.S. SEA LEVEL DATUM
 1929

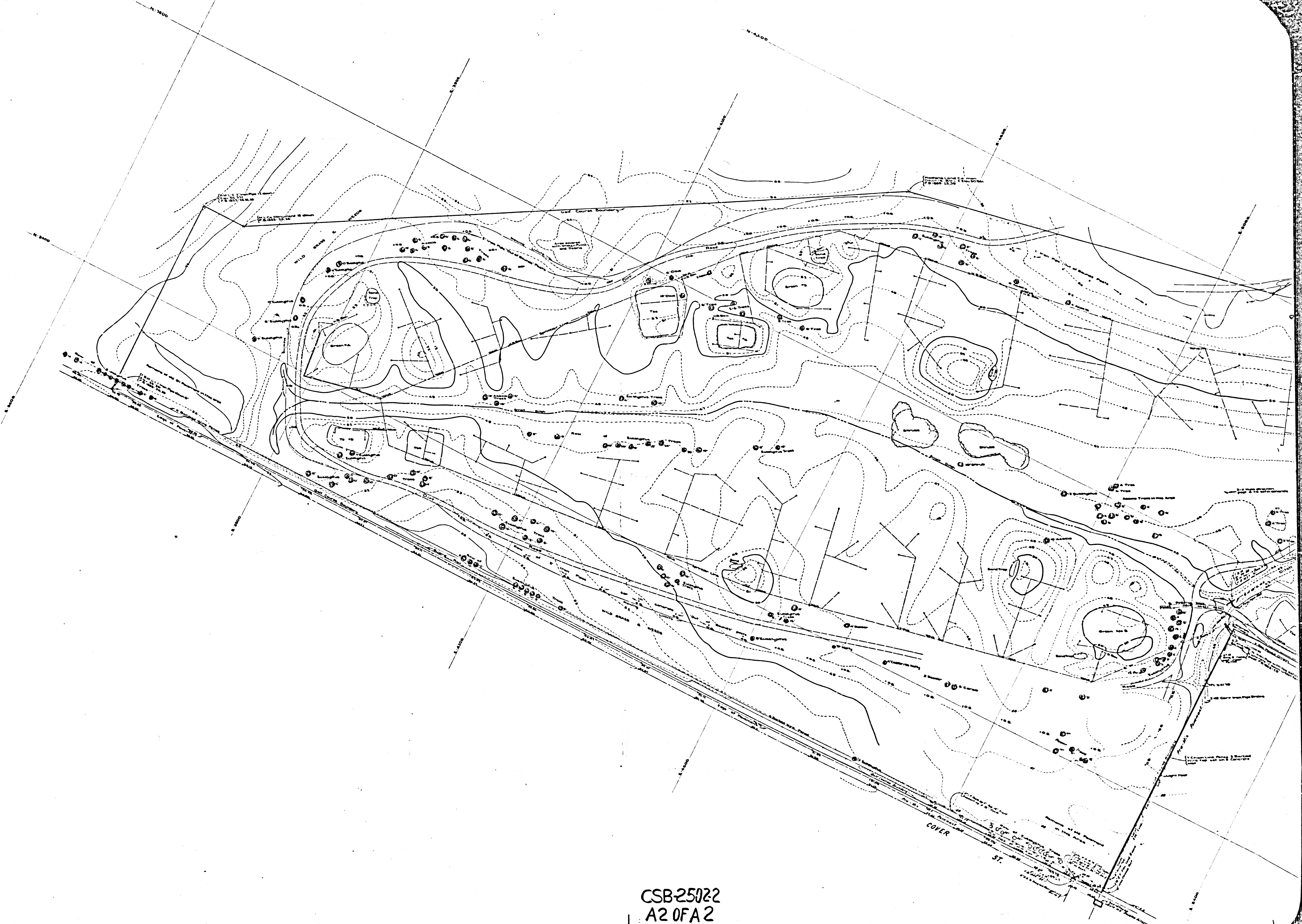
For Boundary locations see CS B-2502 sheet 1

Revised By J. Goss 3-53 E-434-2

LEGEND
 --- Sprinkler Pipes
 --- Existing Survey Lines 1/4" to 1/2"
 --- Golf Course Boundaries
 --- Existing Utility Conduits
 --- Existing (8" Pipe) Conduits

PROPERTY OF DOUGLAS AIRCRAFT

CSB-25022
 A10FA 2



CSB-25022
A2 OF A 2