

COUNTY OF LOS ANGELES
 TOPOGRAPHIC MAP OF
LAKWOOD GOLF COURSE

COUNTY SURVEYORS MAP NO. B-2502
 SHEET NO. 3 OF 4 SHEETS
 SCALE: 1 INCH = 40 FT.

JOB NUMBER 0054.77
 JOHN A. LAMBIE COUNTY ENGINEER
 SURVEYED FEB. 1955
 SURVEYED ON REQUEST OF THE
 SUPERINTENDENT OF PARKS & RECREATION
 UNDER SEC. 79, ORD. 4099, BY LETTER
 DATED JUNE 10, 1954

BEARINGS ARE BASED ON THE BEARING
 OF CARSON ST. AS SHOWN ON C.S. B-613-3
 PLANE TABLE SHEETS E-436, E-437,
 E-438, E-441, P.B. 1853

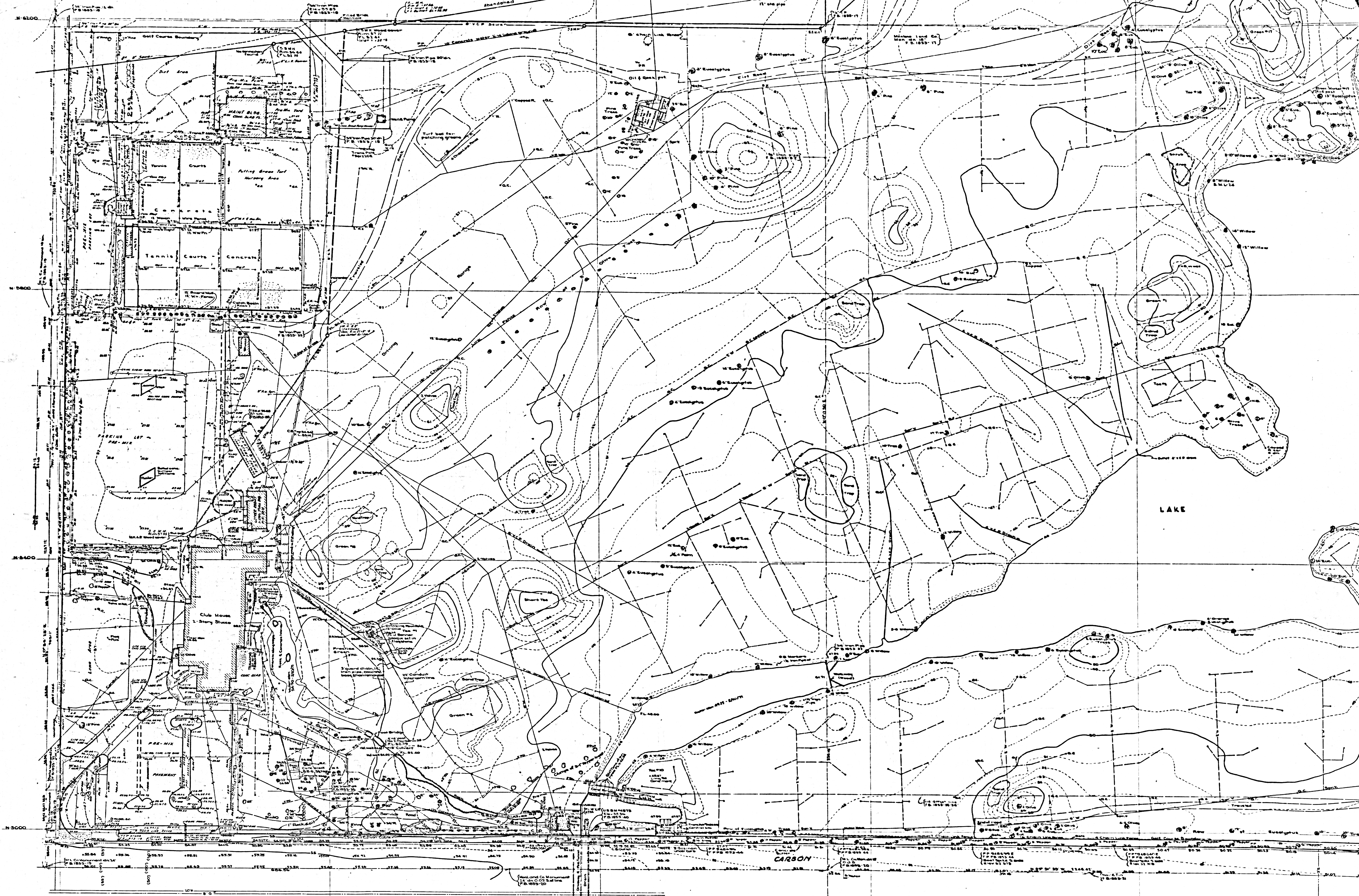
FIELD WORK BY WE BRADEN
 OFFICE WORK BY T.M. PALMER
 CHECKED BY E. MOORE

DATUM - MEAN SEA LEVEL
 ELEVATIONS SHOWN HEREON ARE BASED ON THE
 LOS ANGELES COUNTY PRECISE LEVEL NET LINE A
 P.S. ADJUSTMENT U.S.C. & G.S. SEA LEVEL DATUM
 1929.

For boundary locations see C.S. B-2502 sheet 1
 Rev. 1-64 FOF
 REVISED - 8-11-55
 REVISED - 8-11-55
 REVISED - 10-11-55
 REVISED - 1-11-56

LEGEND
 --- BOUNDARY LINES
 --- PROPERTY LINES
 --- EASEMENTS
 --- RIGHT-OF-WAY LINES
 --- EXISTING UTILITY LINES
 --- EXISTING ROAD CENTERLINE

CSB-2502-3
 A1 OF A2



CSB-2502-3
A20FA2

1:1 Co. monument with
gravel filled with core
(P.B. 1005-20, Elev. 51.96)