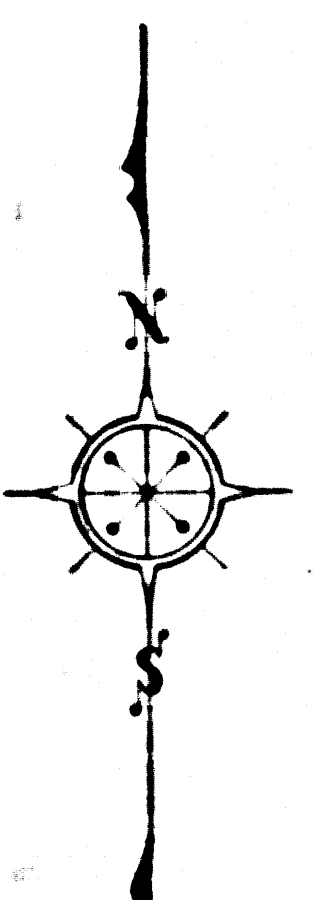
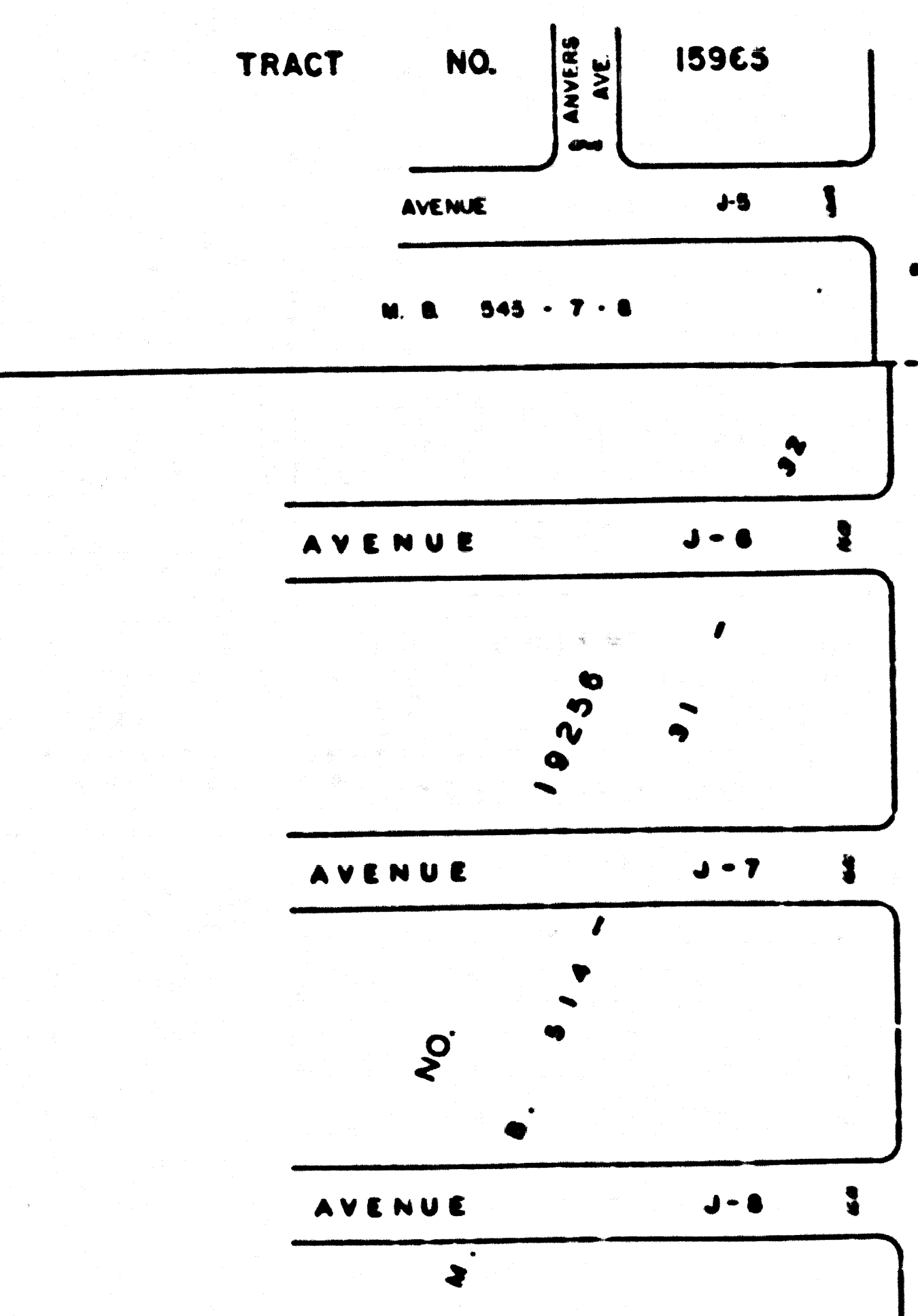
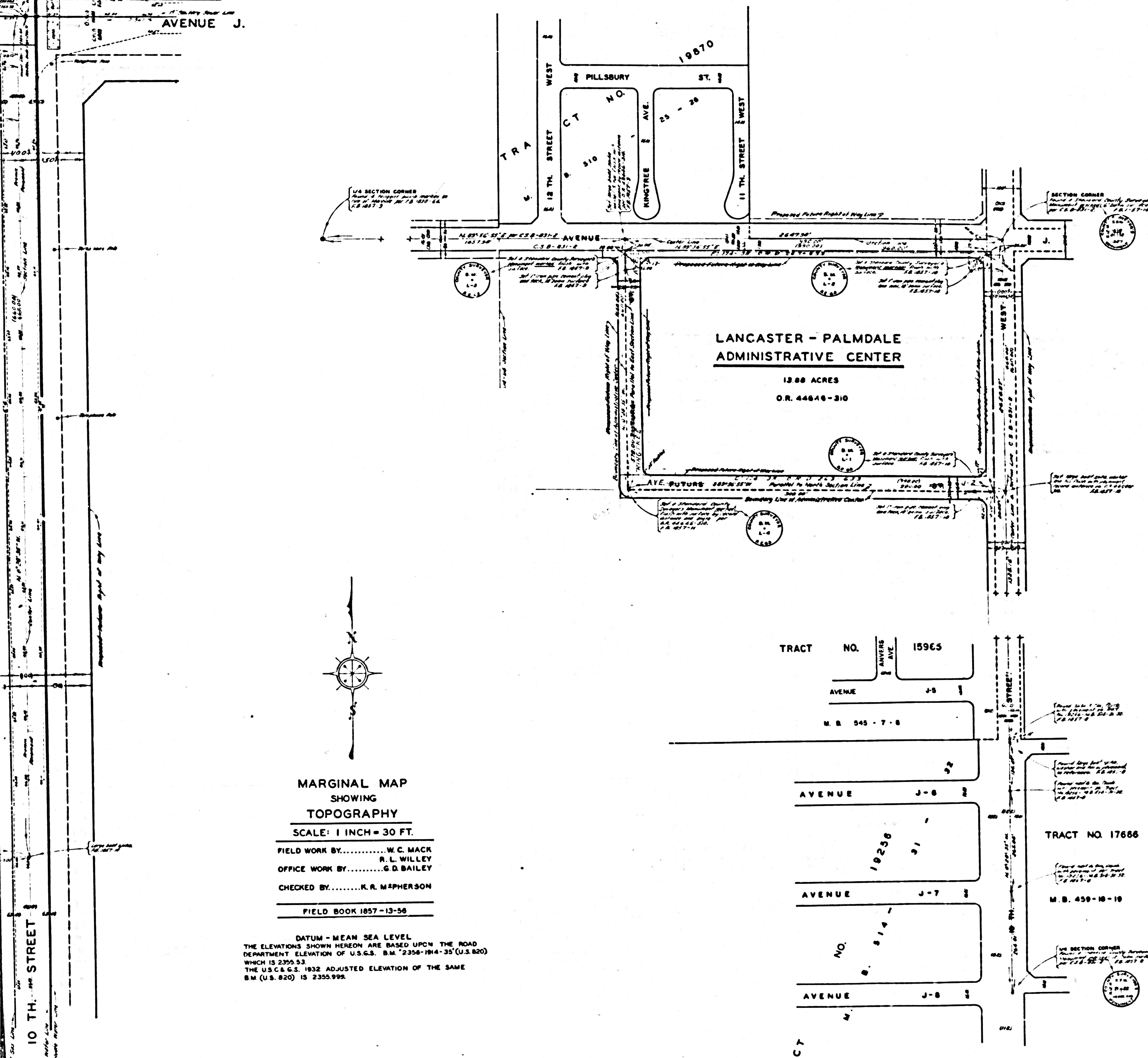


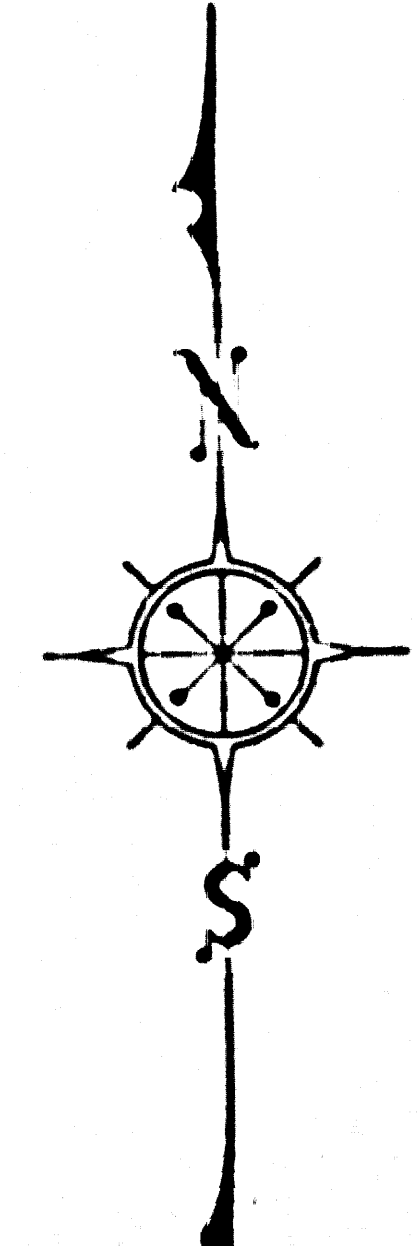
10 TH. STREET WEST

AVENUE J.



MARGINAL MAP  
SHOWING  
TOPOGRAPHY  
SCALE: 1 INCH = 30 FT.  
FIELD WORK BY.....W.C. MACK  
R.L. WILLEY  
OFFICE WORK BY.....G.D. BAILEY  
CHECKED BY.....K.R. MAPHERSON  
FIELD BOOK 1857-13-58

DATUM - MEAN SEA LEVEL  
THE ELEVATIONS SHOWN HEREON ARE BASED UPON THE ROAD  
DEPARTMENT ELEVATION OF U.S.G.S. B.M. 7356-194-35 (U.S. 820)  
WHICH IS 2350.53  
THE U.S.C. & G.S. 1932 ADJUSTED ELEVATION OF THE SAME  
B.M. (U.S. 820) IS 2355.995.

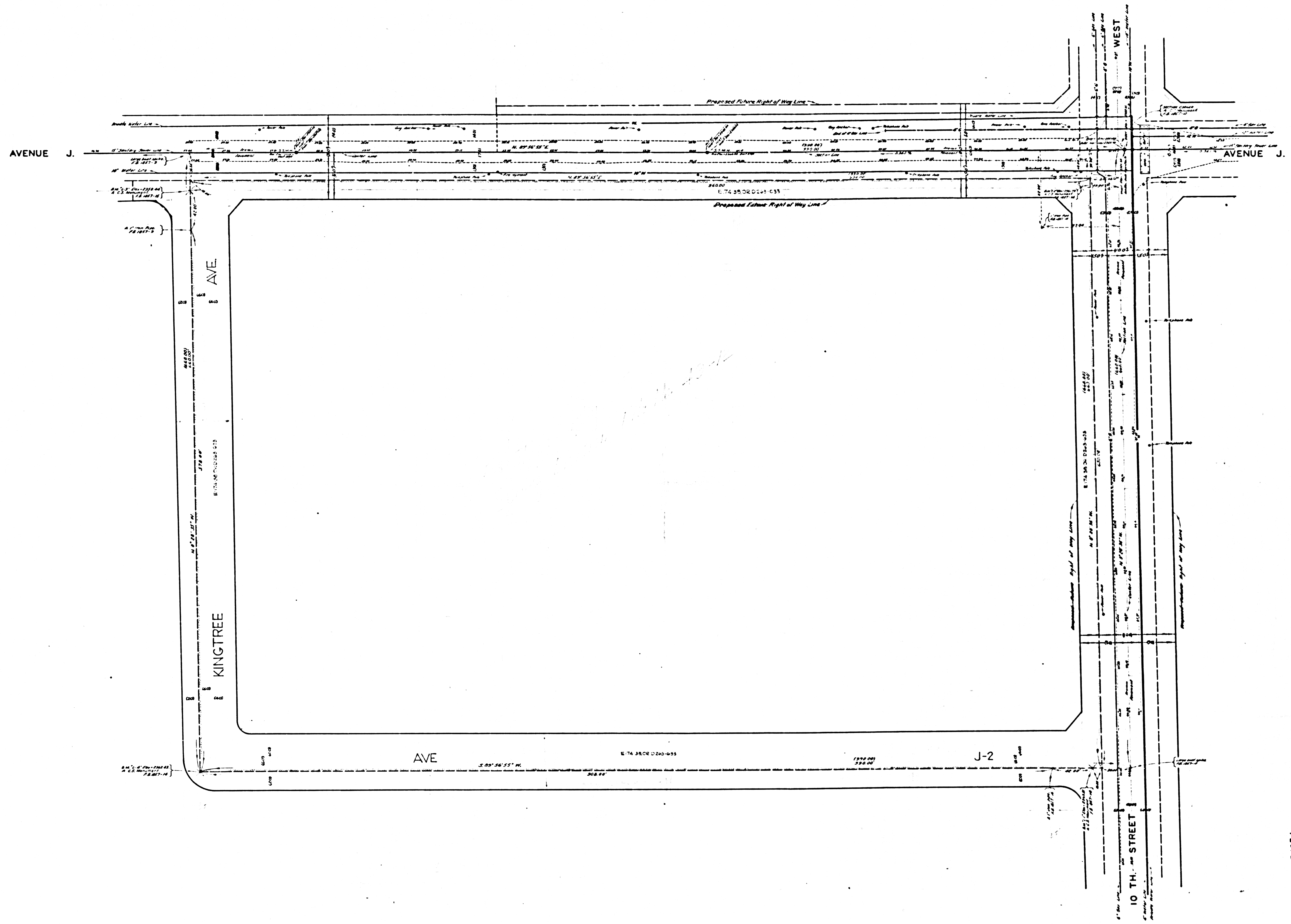


COUNTY OF LOS ANGELES  
MAP OF  
**LANCASTER - PALMDALE  
ADMINISTRATION CENTER**  
BEING

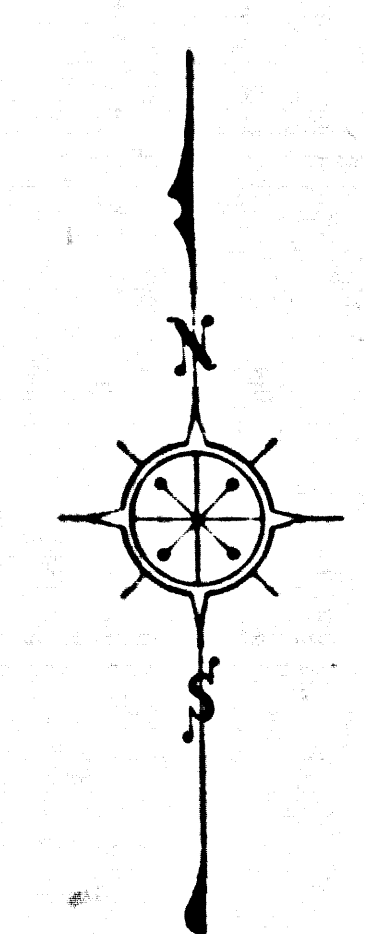
A PORTION OF THE N. 1/2 OF THE N.E. 1/4 OF THE  
N.E. 1/4 OF SECTION 21, T. 7. N. - R. 12. W. - S. B. M.  
COUNTY SURVEYORS MAP NO. B-2508  
SCALE - 1 INCH = 100 FT.

JOB NUMBER 002125  
WILLIAM J. FOX - COUNTY SURVEYOR  
SURVEYED AUGUST 1954  
SURVEYED ON REQUEST OF THE COUNTY  
ENGINEER UNDER SEC. 79, ORD. 4099  
BY LETTER DATED MARCH 30, 1954  
BEARINGS ARE BASED ON THE BEARING OF  
AVENUE J AS SHOWN ON C.S.B.-831-2  
FIELD BOOK 1857-7-58  
FIELD WORK BY.....W.C. MACK  
R.L. WILLEY  
OFFICE WORK BY.....G.D. BAILEY  
CHECKED BY.....K.R. MAPHERSON  
INDEX 7.  
Revised August 27, 1957 - R.L. Willey  
Revised May, 1963 J.L. Edwards

CSB-2508  
A10FA2



VIA SECTION CORNER  
 1/2" = 100' (approx.)  
 1/4" = 50' (approx.)  
 1/8" = 25' (approx.)  
 1/16" = 12.5' (approx.)



MARGINAL MAP  
 SHOWING  
 TOPOGRAPHY  
 SCALE: 1 INCH = 30 FT.  
 FIELD WORK BY..... W. C. M.  
 OFFICE WORK BY..... G. D. BAI  
 CHECKED BY..... K. R. MAPHER

FIELD BOOK 1857-13-58

DATUM - MEAN SEA LEVEL  
 THE ELEVATIONS SHOWN HEREON ARE BASED  
 DEPARTMENT ELEVATION OF U.S.G.S. B.M. 731  
 WHICH IS 2355.93  
 THE U.S.C. & G.S. 1932 ADJUSTED ELEVATION  
 B.M. (U.S. 824) IS 2355.902

CSB-2508  
 A20FA2