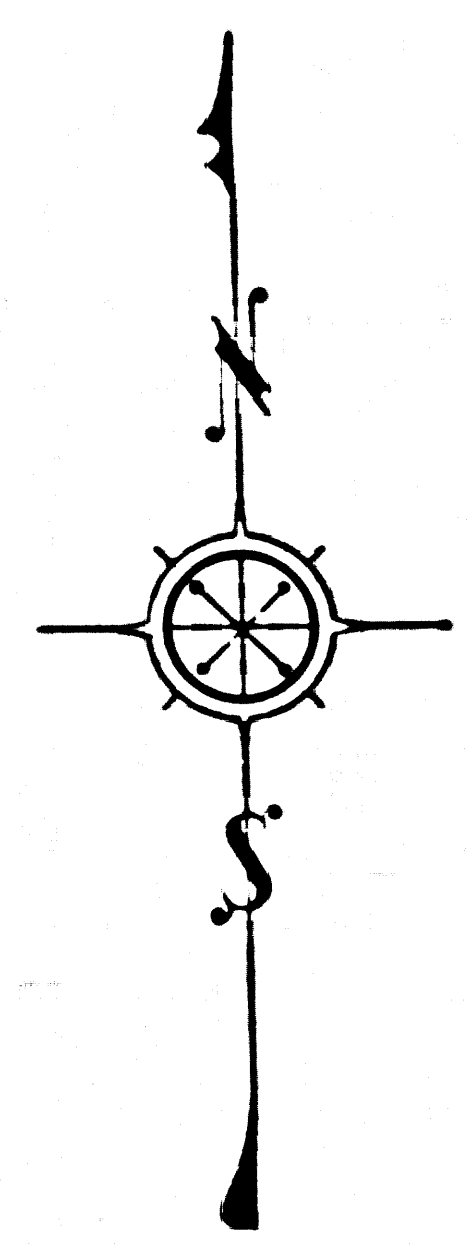
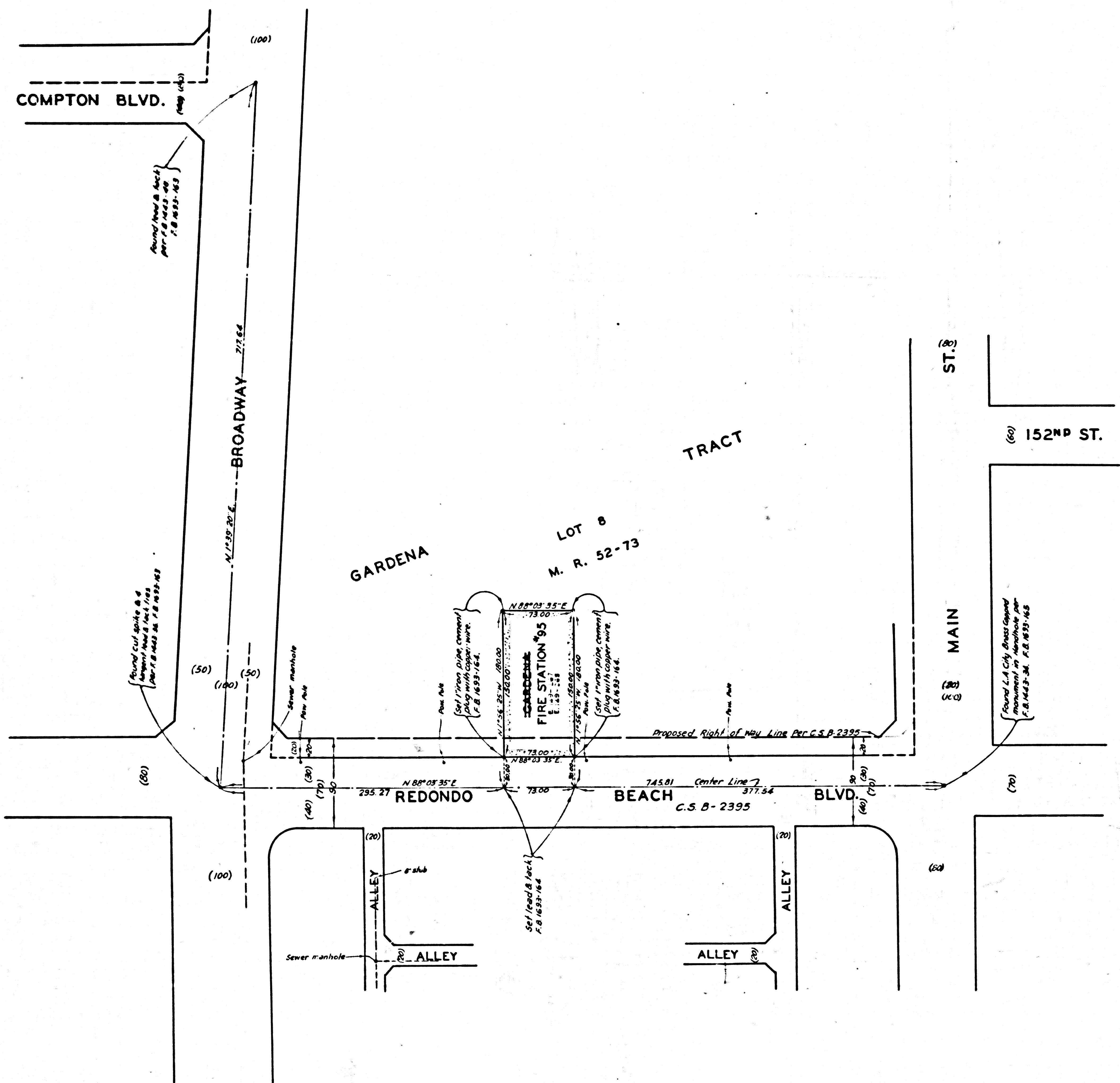


COMPL. B-ON PLAN 2007/002 710003



COUNTY OF LOS ANGELES
 LOS ANGELES CO. MAP OF
GARDENA FIRE STATION NO.95
 IN THE
 CONSOLIDATED COUNTY FIRE PROTECTION DISTRICT

BEING A PORTION OF LOT 8, GARDENA
 TRACT M.R. 52-73.

COUNTY SURVEYORS MAP NO. B-2513
 SCALE: 1 INCH = 50 FEET

JOB NUMBER 0801 32
 WILLIAM J. FOX - COUNTY SURVEYOR
 SURVEYED OCT. 1954

SURVEYED ON REQUEST OF THE CHIEF ENGINEER
 COUNTY FIRE PROTECTION DISTRICTS UNDER
 SEC. 79 ORD. 4099 BY LETTER DATED OCT. 6,
 1954.

BEARINGS ARE BASED ON THE BEARING OF
 REDONDO BEACH BLVD. AS SHOWN ON
 C. S. B - 2395

F. B. 1093-161-174
 FIELD WORK BY F.H. BLANCHARD
 OFFICE WORK BY C. E. DROWN
 CHECKED BY D. M. FINLEY

1/16/56
 Revised Sheet 1963 - J.C.R.

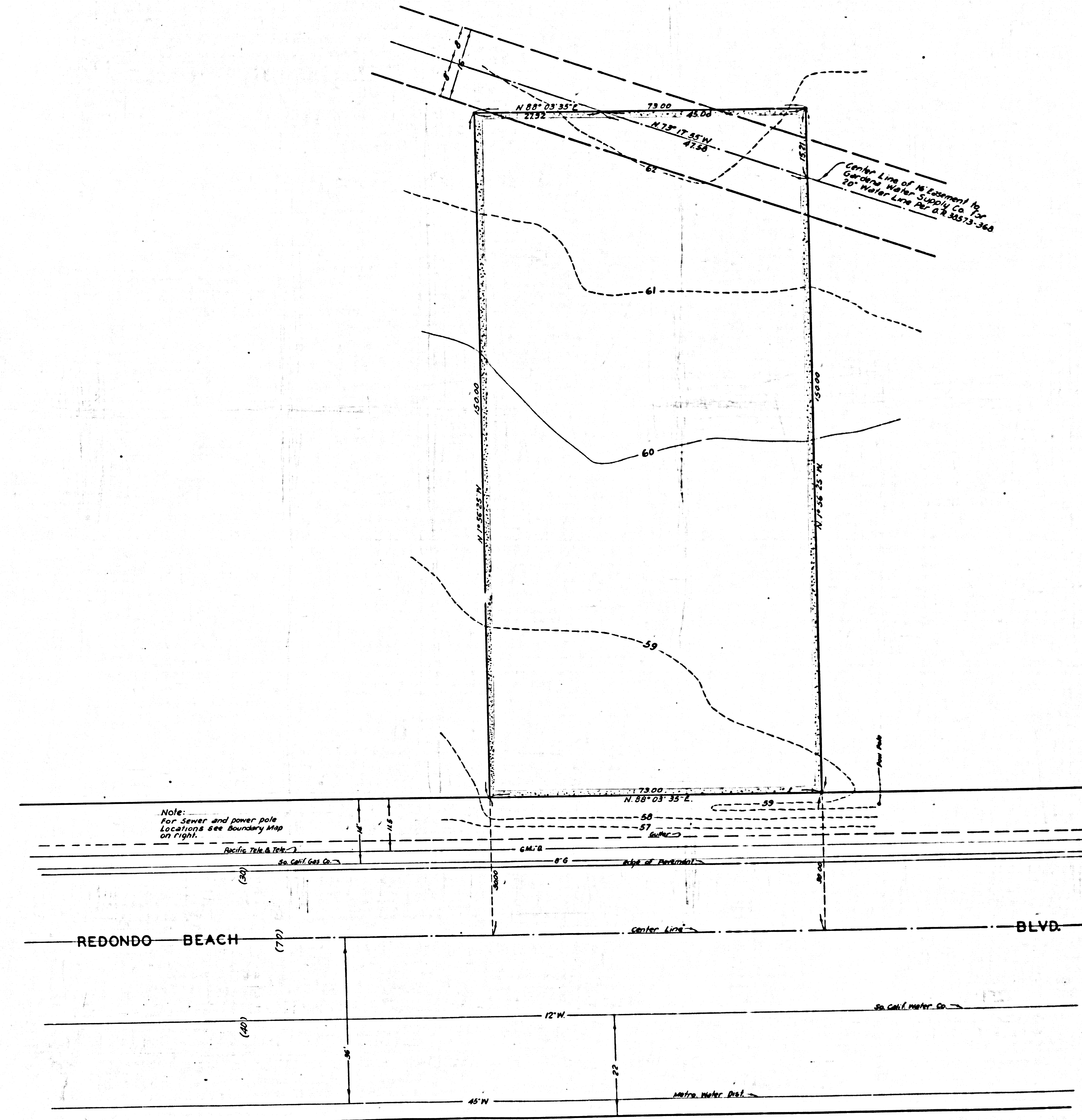
CSB-2513
 A10FA2

COMPL. B-ON PLAN 2007/002 710003

HARD
 OWN
 LEY
 1929
 ELES
 0021

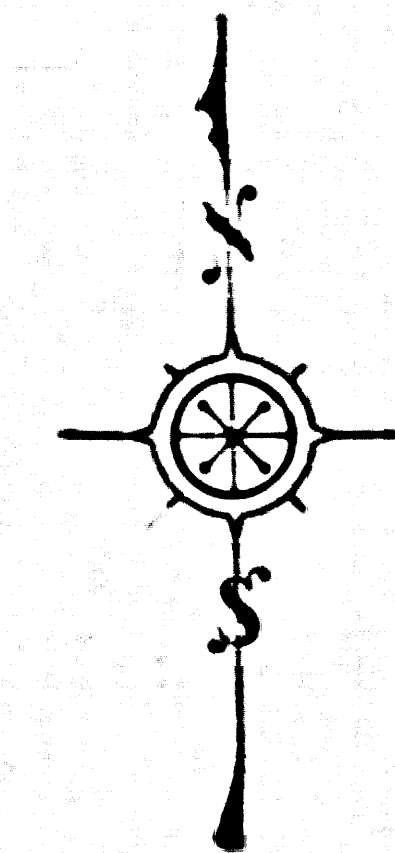
COMPL. SURVEYORS MAP NO. P-5213

COMPL. SURVEYORS MAP NO. P-5213



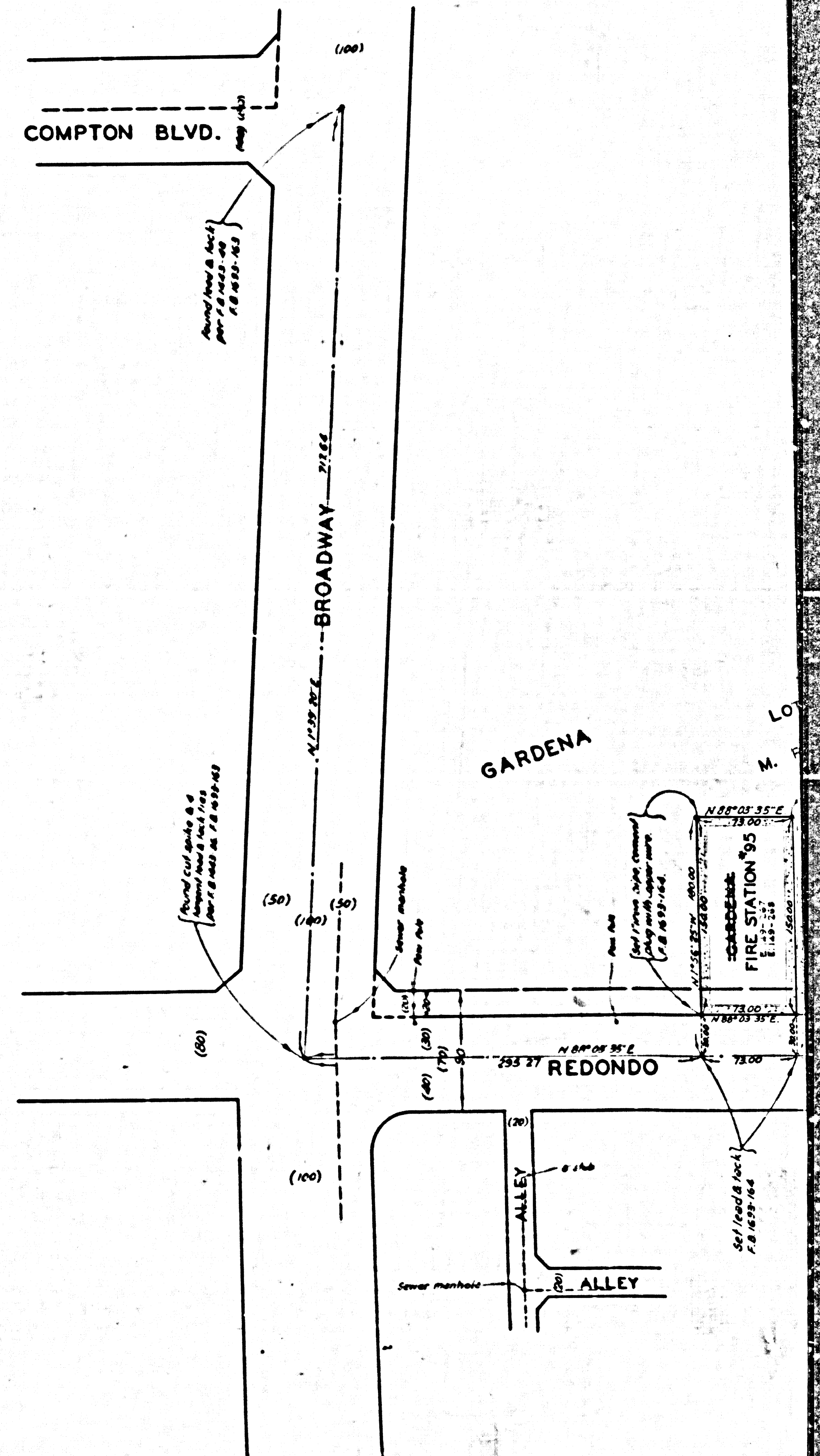
Note:
For sewer and power pole
Locations see Boundary Map
on right.

Center Line of N. Easement by
Gardena Water Supply Co. for
70' Water Line per A.R. 3513-360



MARGINAL MAP
SHOWING
TOPOGRAPHY
SCALE: 1 INCH = 10 FEET
FIELD WORK BY F. H. BLANCHARD
OFFICE WORK BY C. E. DROWN
CHECKED BY D. M. FINLEY

U.S.C. & G.S. SEA LEVEL DATUM OF 1929
ELEVATIONS ARE BASED ON LOS ANGELES
COUNTY PRECISE LEVEL NET LINE NO. 1
1952 ADJUSTMENT.



CSB-2513
A20FA2