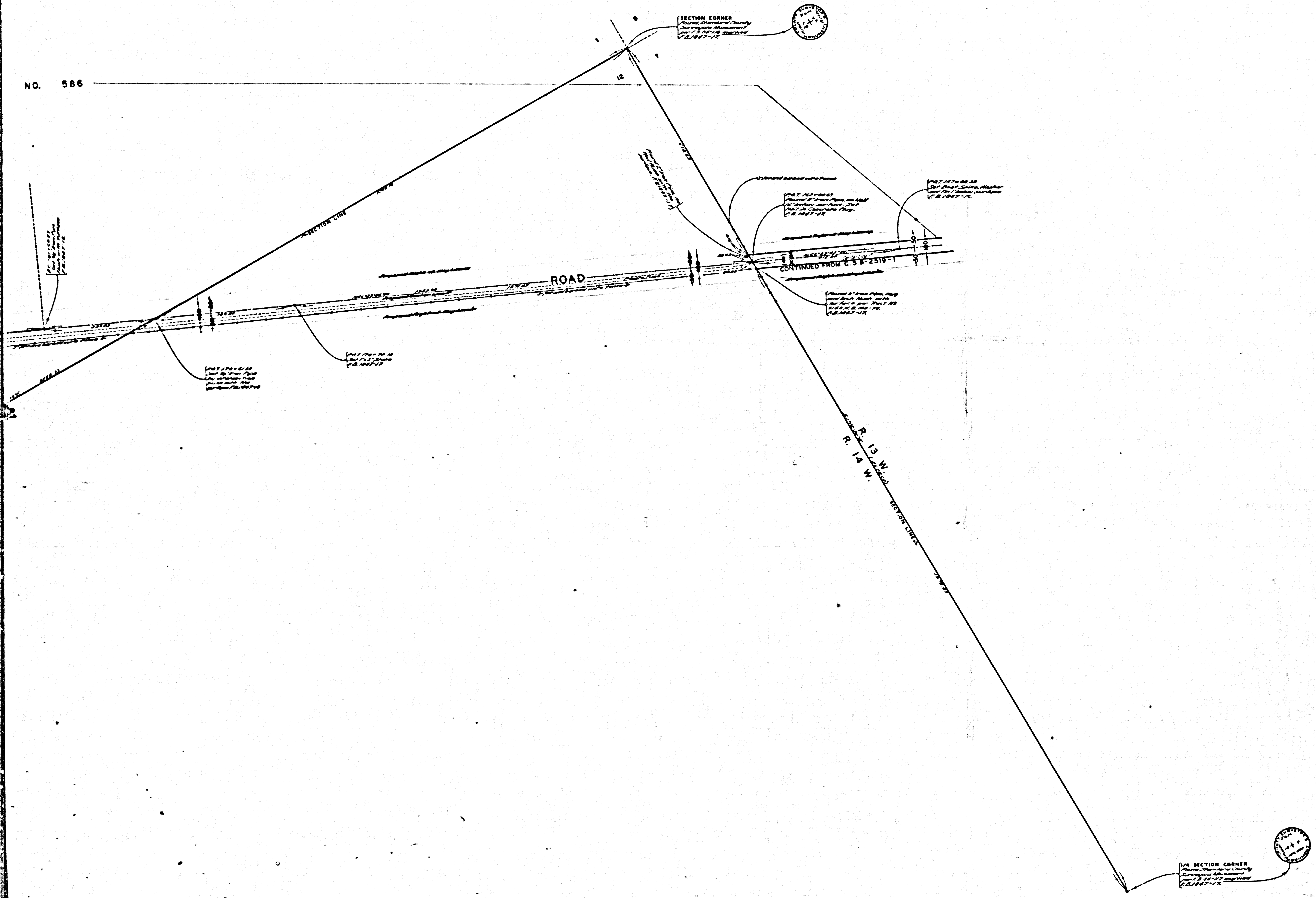


NO. 586



COUNTY OF LOS ANGELES
 MAP OF
**ELIZABETH LAKE
 PINE CANYON ROAD**
 FROM
 GODDE HILL ROAD
 TO MUNZ RANCH
 WILLOW SPRINGS ROAD

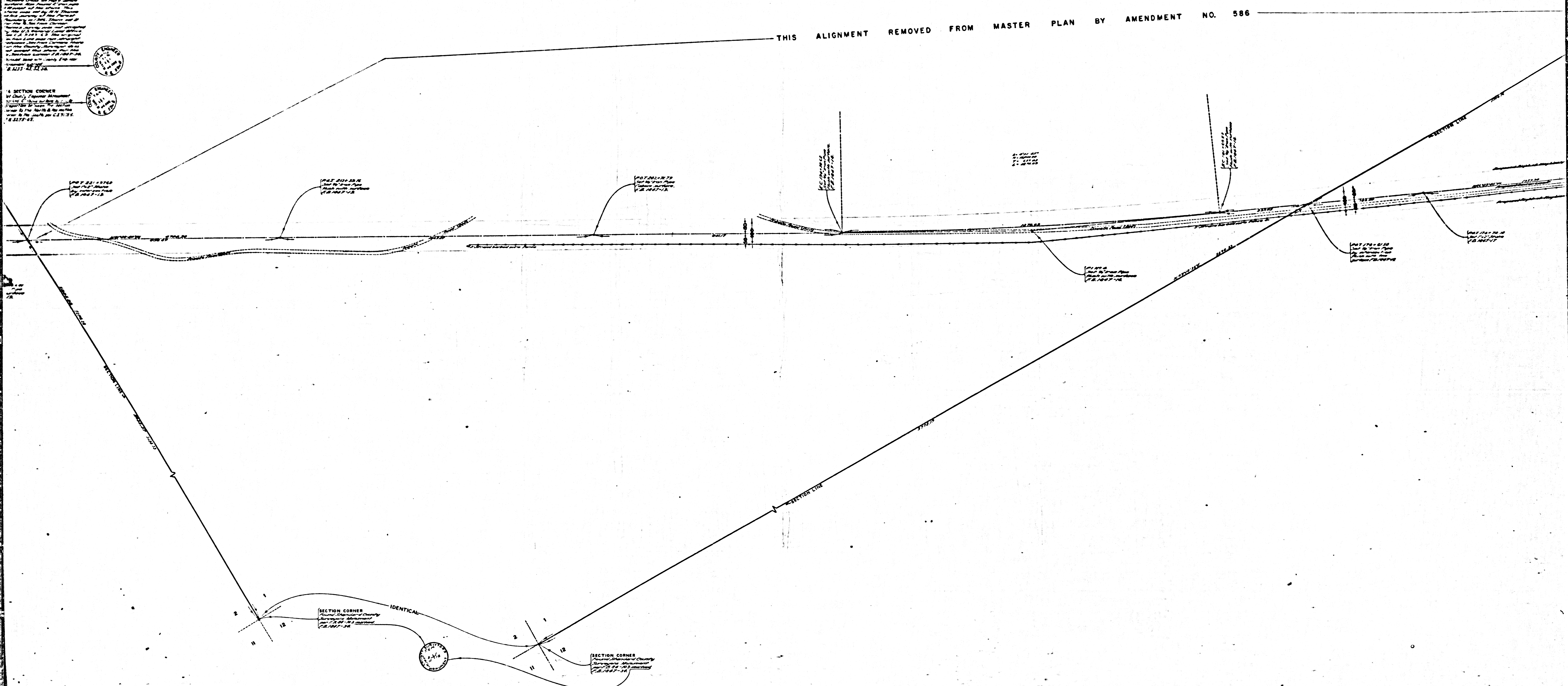
COUNTY SURVEYORS MAP NO. B-2519
 SHEET NO. 2 OF 4 SHEETS
 SCALE - 1 INCH = 100 FT.

JOB NUMBER 0904.80
 WILLIAM J. FOX - COUNTY SURVEYOR
 SURVEYED APRIL - NOV. 1954
 SURVEYED ON REQUEST OF THE
 ROAD COMMISSIONER UNDER SEC. 79, ORD. 4059
 BY REQUISITION NO. 398-20
 DATED JAN. 27, 1954
 BEARINGS ARE BASED ON THE BEARING OF
 ELIZABETH LAKE PINE CANYON ROAD AS
 SHOWN ON C.S.B-2392-2
 F.B. 1847 - 5 - 178
 FIELD WORK BY... W. S. COWHERD.
 R. L. WILLEY.
 OFFICE WORK BY... L. C. WILSON.
 CHECKED BY K. R. MAPHERSON. L.M. 78

Bound mostly true of the 1/4 SECTION - 1/4 Section, 1964 by R.L.E.
 Map revised to show portion removed from Marker Plan 14
 Am. Survey No. 506 by R.M. March 12, 1953

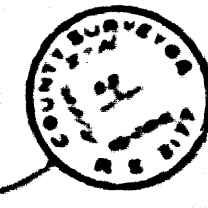
CSB2519-2
 A10FA4

This alignment removed from master plan by amendment no. 586
 THIS ALIGNMENT REMOVED FROM MASTER PLAN BY AMENDMENT NO. 586



CSB-25192
 A2 OF A 4.

SECTION CORNER
Surveyed by [unclear]
[unclear] [unclear]
[unclear] [unclear]



T. 7 N. - R. 14 W.
T. 6 N. - R. 14 W.

SECTION CORNER
Surveyed by [unclear]
[unclear] [unclear]
[unclear] [unclear]



SECTION CORNER
Surveyed by [unclear]
[unclear] [unclear]
[unclear] [unclear]



SECTION CORNER
Surveyed by [unclear]
[unclear] [unclear]
[unclear] [unclear]



SECTION CORNER
Surveyed by [unclear]
[unclear] [unclear]
[unclear] [unclear]



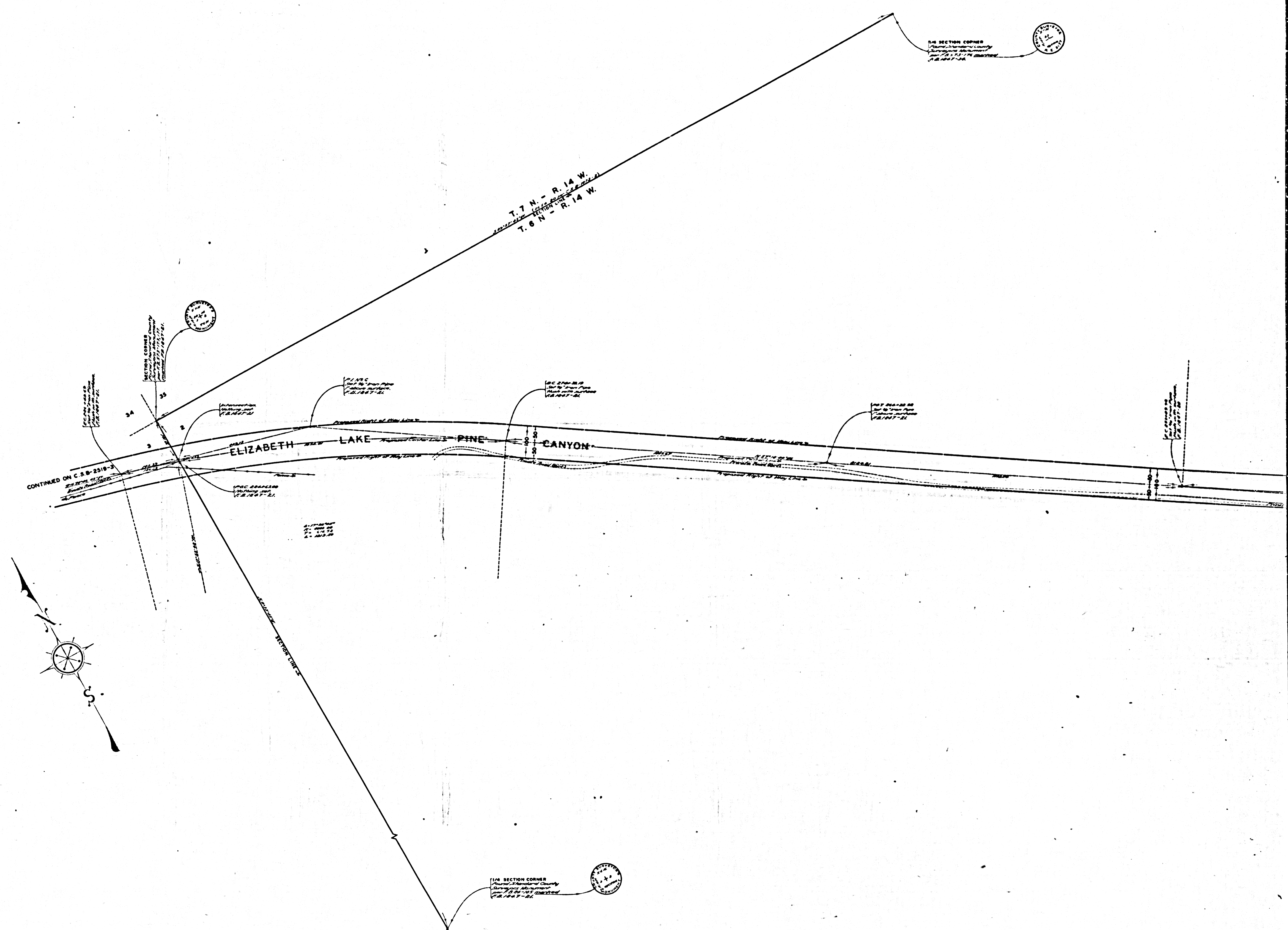
SECTION CORNER
Surveyed by [unclear]
[unclear] [unclear]
[unclear] [unclear]



CSB-2519-2
A30FA 4

SHEET NO 5 OF 4 SHEETS
CONNILLY SURVEYORS MAP NO B-5210

SHEET NO 5 OF 4 SHEETS
CONNILLY SURVEYORS MAP NO B-5210



CSB-2519-2
A4 OF A4