

COUNTY OF LOS ANGELES
 MAP OF
ELIZABETH LAKE ROAD
 FROM
 GODDE HILL ROAD
 TO
 MUNZ RANCH ROAD
 COUNTY SURVEYORS MAP NO. B-2519
 SHEET NO. 4 OF 4 SHEETS
 SCALE: 1 INCH = 100 FT.

JOB NUMBER 0074.18
 JOHN A. LAMBIE - COUNTY ENGINEER
 SURVEYED JULY - NOVEMBER 1961
 SURVEYED ON REQUEST OF THE REGIONAL
 PLANNING COMMISSION UNDER SEC. 79,
 ORD. 4099, BY LETTER DATED... FEB. 21, 1961
 AND BY BOARD ORDER DATED DEC. 11, 1951
 BEARINGS ARE BASED ON THE BEARING OF
 ELIZABETH LAKE ROAD PER C.S.B. 2392-2
 F.B. 1969 - 33-120
 FIELD WORK BY..... W.C. MACK
 S. HALSOKY
 OFFICE WORK BY..... L.C. THOMPSON
 CHECKED BY..... W. BRENNER

INDEX 72

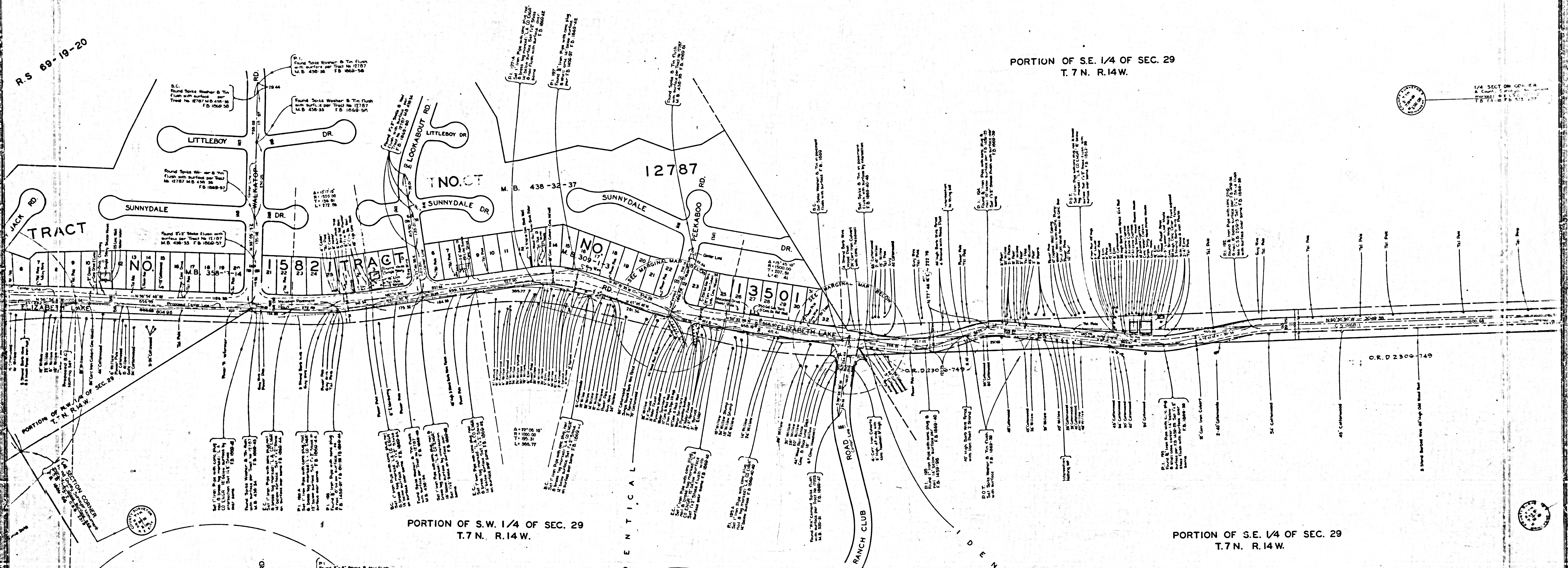
Alignment W of Holstrop Rd. revised by S&B March 1969 as approved by L.C.C. 1/16/69

CSB-2519-4
 A1 OF A3

R.S. 69-19-20

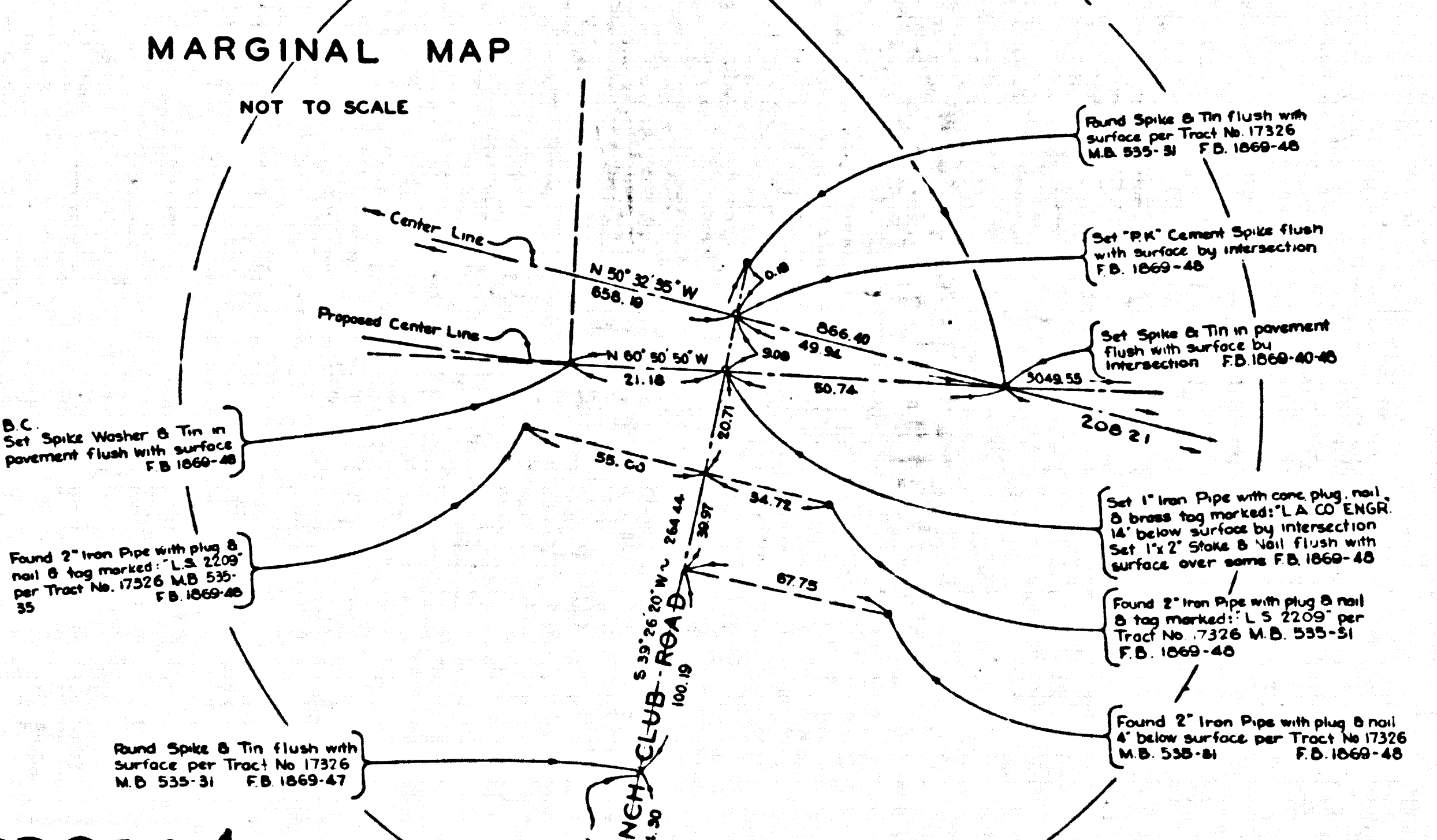
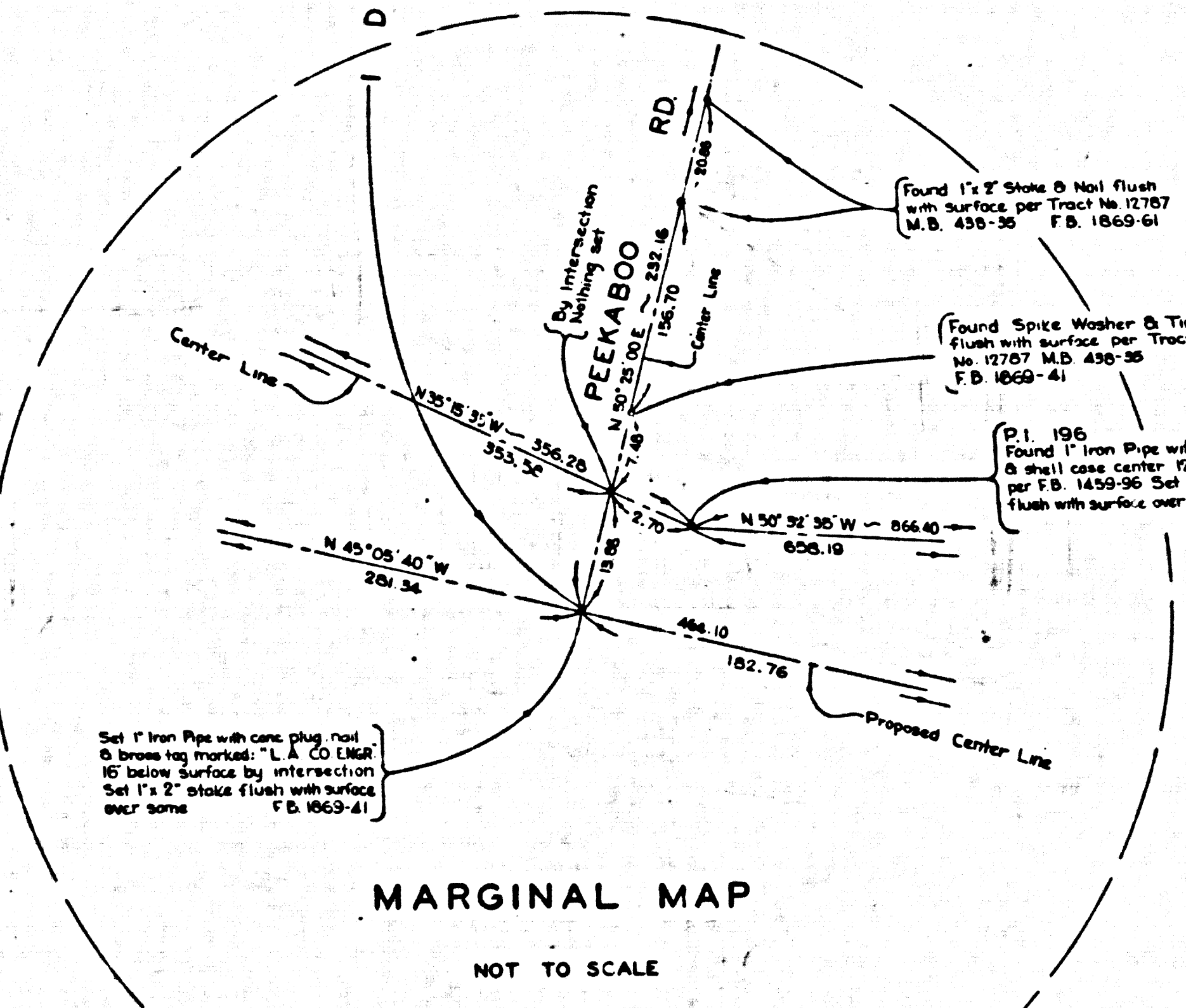
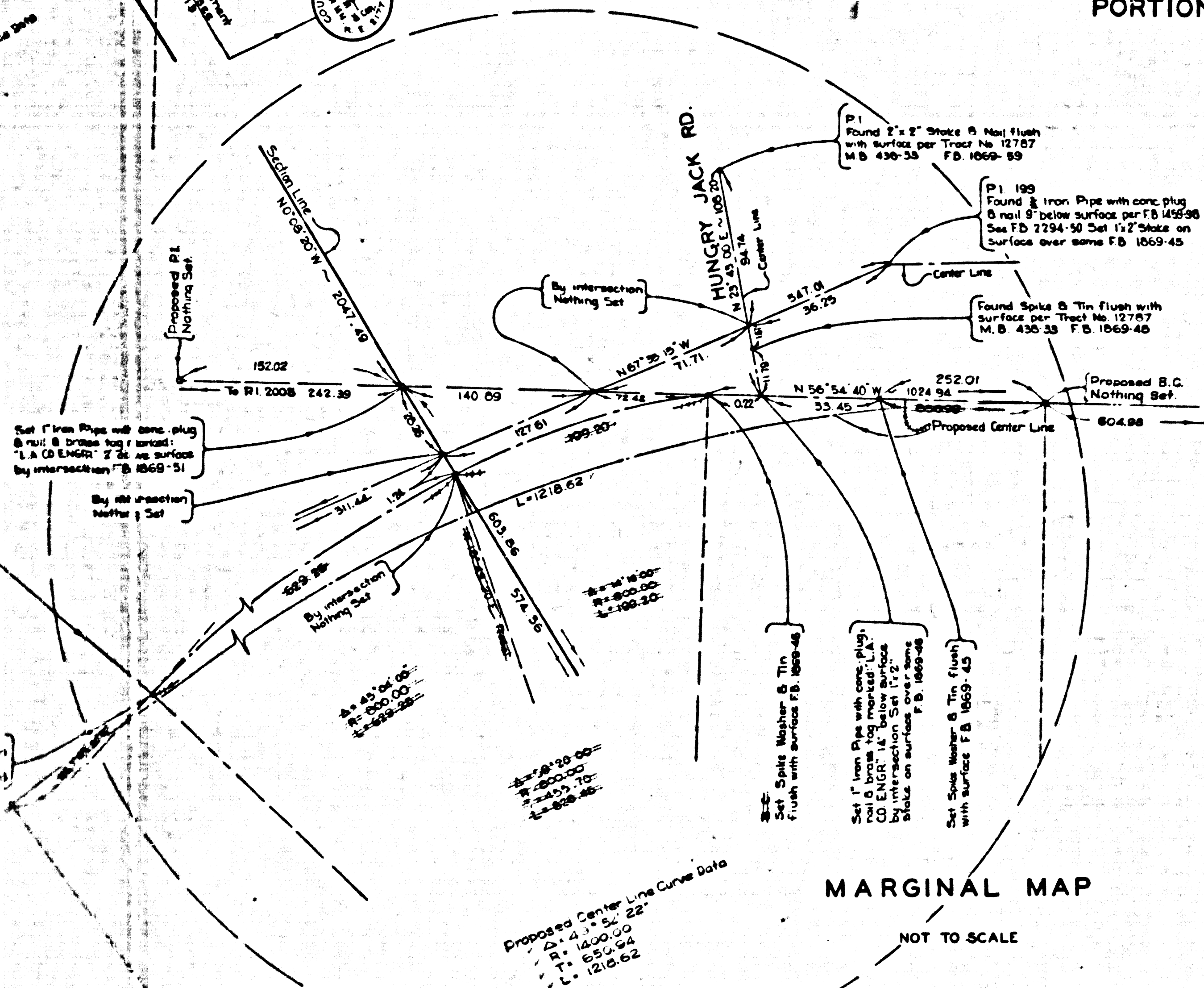
PORTION OF S.E. 1/4 OF SEC. 29
T.7 N. R.14 W.

1/4 SECTION CORNER
A. County of ...
P.B. 1922 M.B. 535-51



PORTION OF S.W. 1/4 OF SEC. 29
T.7 N. R.14 W.

PORTION OF S.E. 1/4 OF SEC. 29
T.7 N. R.14 W.



CSB-2519-4
A20FA3

