

COUNTY OF LOS ANGELES  
 MAP OF  
 STREETS IN THE RIO HONDO AVENUE  
 SANITARY SEWER DISTRICT

COUNTY SURVEYORS MAP NO B-2521  
 SCALE 1" = 100 FT.

JOB NUMBER 0303.00

WILLIAM J. FOX COUNTY SURVEYOR  
 SURVEYED - AUG-OCT. 1947

SURVEYED ON REQUEST OF THE COUNTY ENGINEER  
 UNDER SEC. 79, ORD. 4099, BY LETTER DATED  
 JUNE 3, 1942

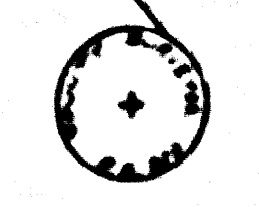
BEARINGS ARE BASED ON THE CALIFORNIA  
 COORDINATE SYSTEM, ZONE 7, PER ACT 8351,  
 GENERAL LAWS. SEE C.S. 9423

F.B. 1401-S-45

FIELD WORK BY . . . . . N. F. NAUMANN  
 OFFICE WORK BY . . . . . C. W. COX  
 CHECKED BY . . . . . K. R. M. PHERSON

NOTE 1 - THIS SURVEY MADE TO ESTABLISH CENTER LINES ON THE STREETS  
 IN THIS AREA PRELIMINARY TO CONSTRUCTION OF SEWERS  
 IN THE RIO HONDO AVE. SANITARY SEWER DISTRICT. (C.L.M. 1207)  
 I.M. - 44

NOTE 2 - ALL STANDARD COUNTY SURVEYORS  
 MONUMENTS ARE 2" IRON PIPE, SET  
 IN CONCRETE WITH BRASS CAP  
 MARKED, UNLESS SHOWN OTHERWISE

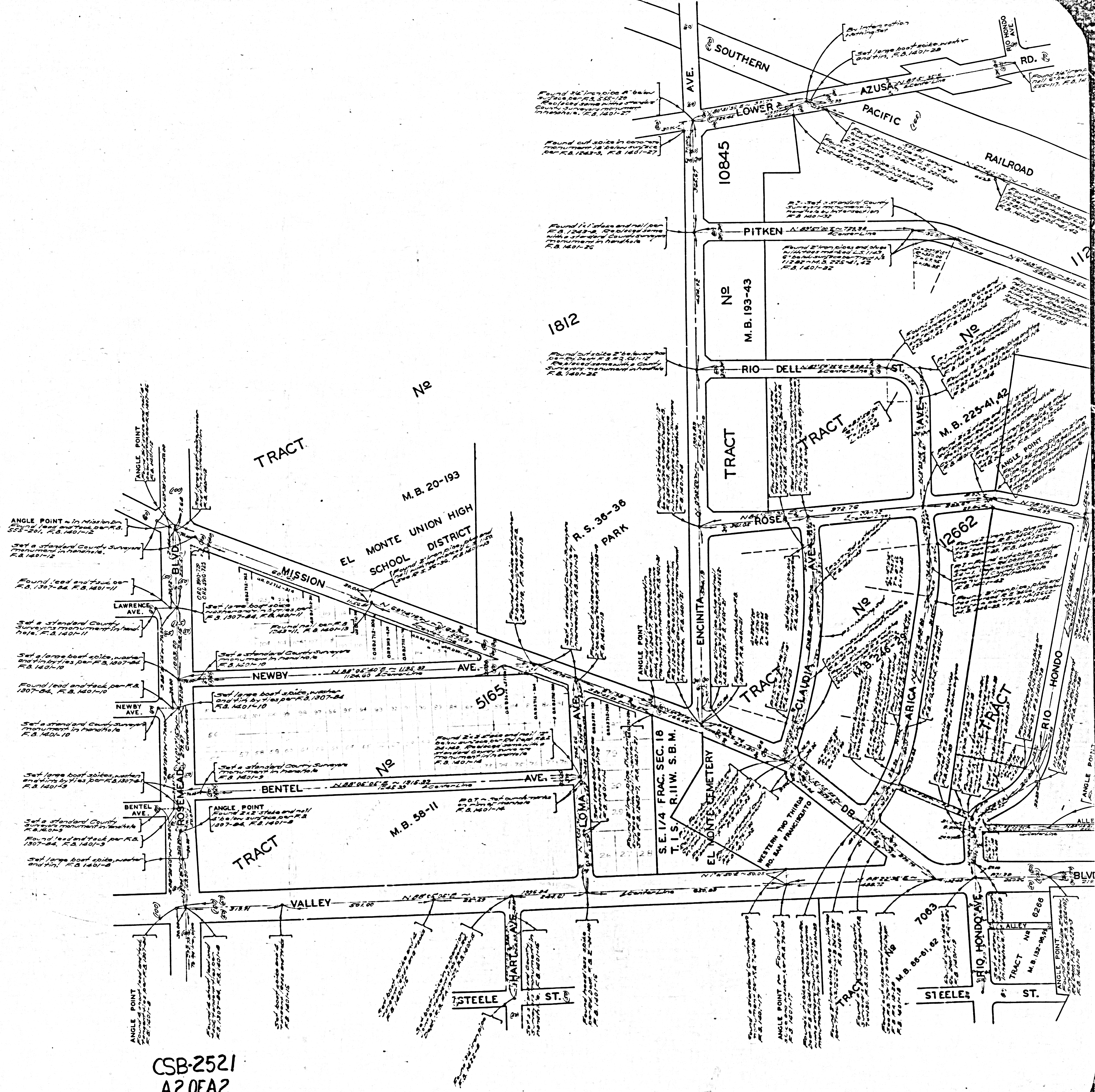


CSB-2521  
 A10FA2

CSB-2521 ON PLAN PROPOSED TRACED

COUNTY SURVEYORS MAP NO B-2521





CSB-2521  
A20FA2