

COUNTY OF LOS ANGELES  
 MAP OF  
**GENERAL WILLIAM J. FOX  
 AIRFIELD**

BEING A PORTION OF SECTION 31, T. 8 N.,  
 R. 12 W. AND A PORTION OF SECTIONS 35  
 AND 36, T. 8 N., R. 13 W., S. B. M.

COUNTY SURVEYORS MAP NO. B-2524  
 SHEET NO. 01 OF 3 SHEETS  
 SCALE - 1 INCH = 200 FT.

JOB NUMBER 0021.01

JOHN A. LAMBIE - COUNTY ENGINEER  
 SURVEYED DECEMBER 1934 - OCTOBER 1937  
 SURVEYED ON REQUEST OF THE COUNTY  
 ENGINEER UNDER SEC. 78, ORD. 4099  
 BY LETTER DATED FEB. 26, 1952

BEARINGS ARE BASED ON THE CALIFORNIA  
 COORDINATE SYSTEM ZONE 1 PER ACT 8351  
 GENERAL LAWS SEE C. S. 9423

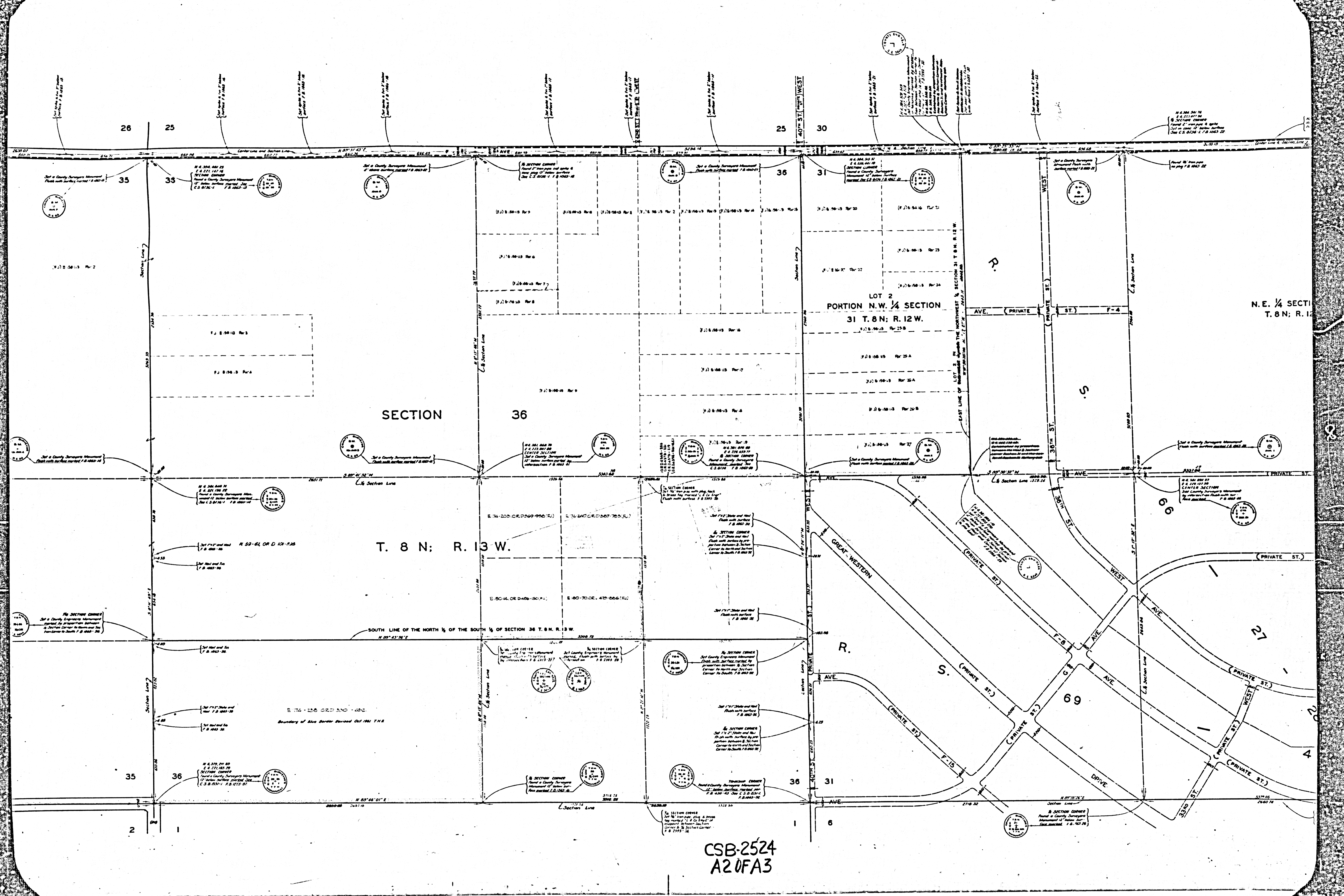
F. B. 1885-D-130

FIELD WORK BY.....R. L. WILLEY  
 OFFICE WORK BY.....M. HAMASU  
 CHECKED BY.....C. R. GOSS

INDEX 71

FOR TOPOGRAPHY PRIOR TO  
 CONSTRUCTION SEE SURVEY DIV-  
 ISION FILE MAD NO 96-11-1-3.

CSB-2524  
 A10FA3



SECTION 36

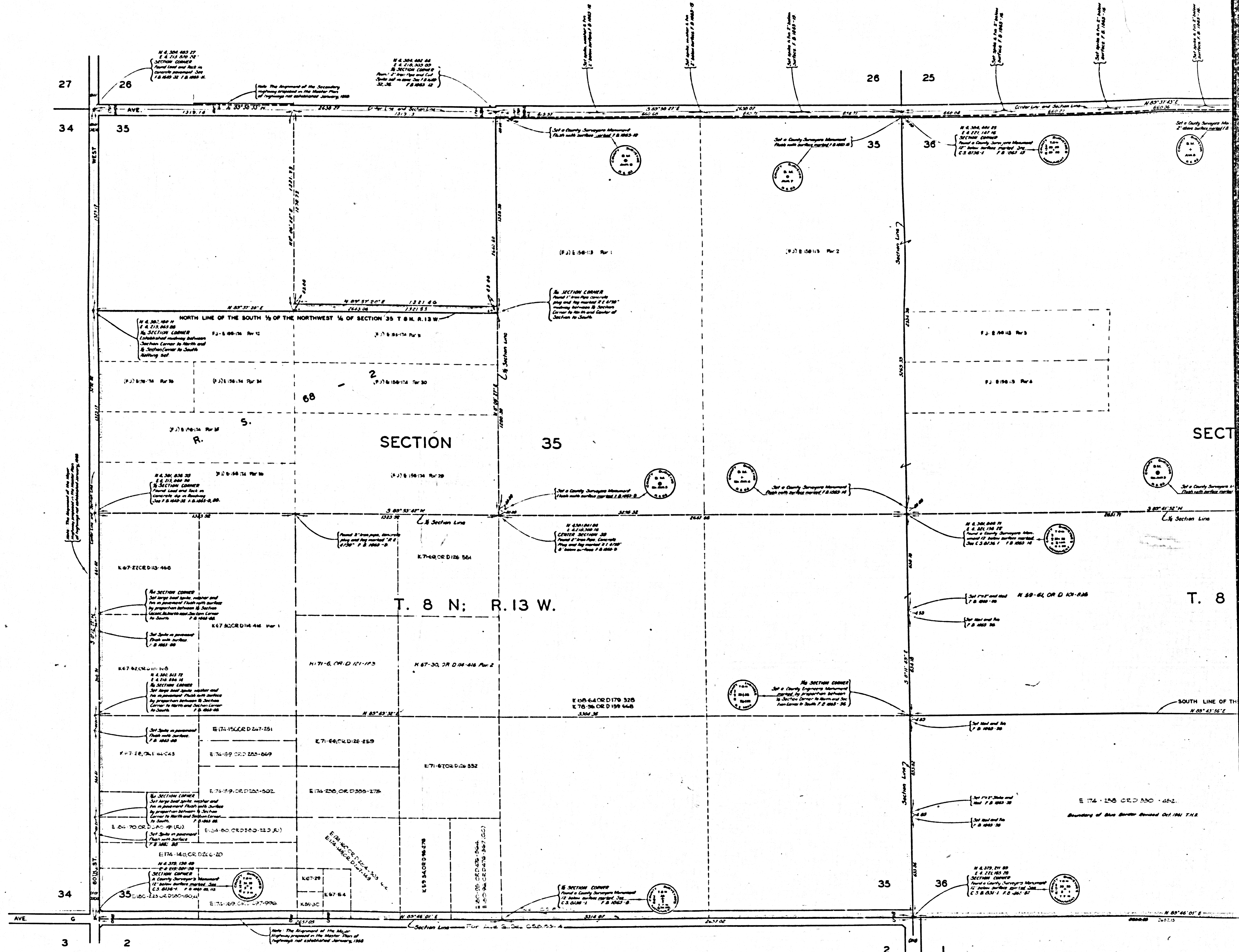
T. 8 N; R. 13 W.

LOT 2  
PORTION N.W. 1/4 SECTION  
31 T. 8 N; R. 12 W.

CSB-2524  
A20FA3

ASSS-B IN GAN SROVYRUE YTKUOD

COMPALY YTKUOD



CSB-2524  
A30FA3