

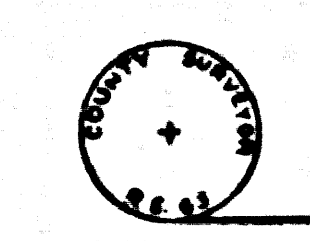
COUNTY OF LOS ANGELES  
 MAP OF  
 STREETS IN THE  
 MEEKER AVENUE AND TYLER AVENUE  
 SANITARY SEWER DISTRICTS

COUNTY SURVEYORS MAP NO. B-2525  
 SCALE: 1 INCH = 100 FT.

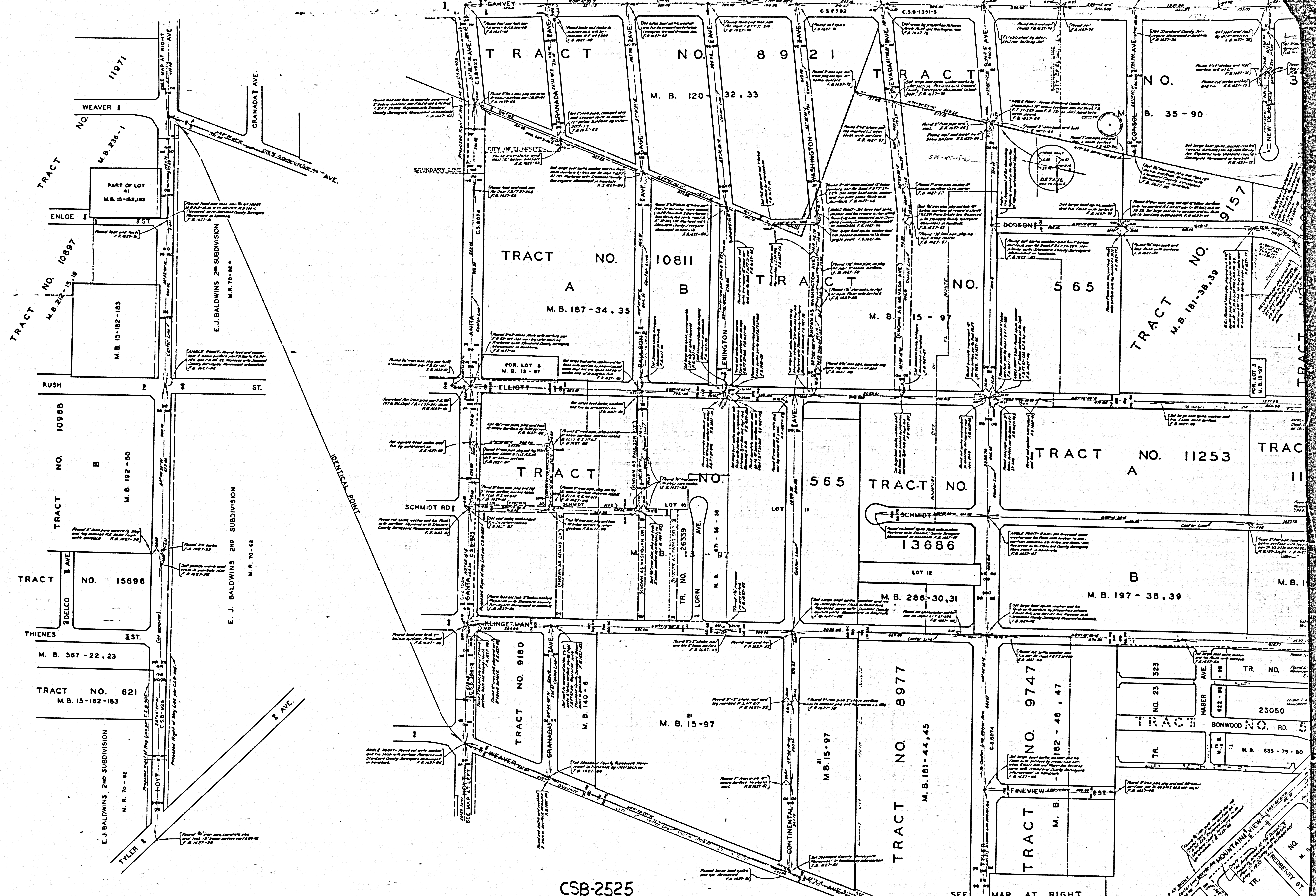
JOB NUMBER 0303.00  
 WILLIAM J. FOX - COUNTY SURVEYOR  
 SURVEYED - 1949, 1950, 1955  
 SURVEYED ON REQUEST OF THE COUNTY  
 ENGINEER UNDER SEC. 19, ORD. 4099  
 BY LETTER DATED JUNE 3, 1942.  
 BEARINGS ARE BASED ON THE BEARING  
 OF HOYT AVE. PER C.S.B.-925.  
 F.B. 1537-5-34  
 F.B. 1627-41-93  
 FIELD WORK BY M.A. VAN DEREN  
 J.L. WILLEY  
 R.B. HOBSON  
 W.C. MACK  
 R.L. GREEN  
 OFFICE WORK BY C.J. GALLI  
 CHECKED BY

NOTE - THIS SURVEY MADE TO ESTABLISH CENTER  
 LINES ON STREETS IN THIS AREA PRELIMINARY TO CONSTRUCTION  
 OF SEWERS IN THE MEEKER AVENUE AND TYLER AVENUE  
 SEWER DISTRICTS, C.I. 1283 AND C.I. 1355 RESPECTIVELY.

NOTE - ALL STANDARD COUNTY SURVEYORS MONUMENTS  
 ARE 2" IRON PIPES SET IN CONCRETE WITH BRASS  
 CAP MARKED, UNLESS OTHERWISE SHOWN.



CSB-2525  
 A10FA2



CSB-2525  
A20FA2

SEE MAP AT RIGHT