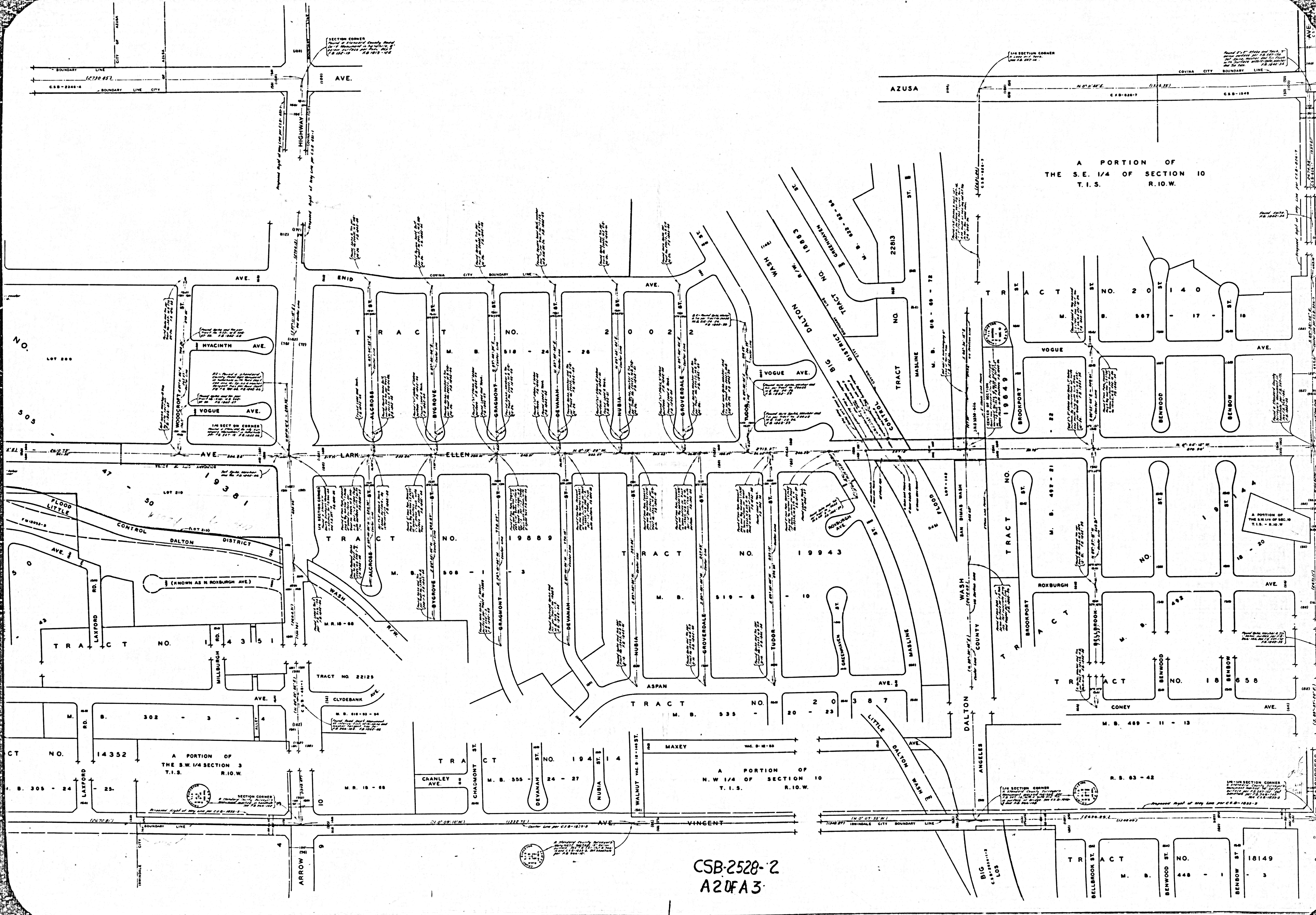


COUNTY OF LOS ANGELES
 MAP OF
LARK ELLEN AVENUE
 FROM
 GARVEY BOULEVARD
 TO
 GLADSTONE STREET
 COUNTY SURVEYORS MAP NO. B-2528
 SHEET NO. 2 OF 2 SHEETS
 SCALE - 1 INCH = 100 FT.

JOB NUMBER 0074.21
 JOHN A. LAMBIE - COUNTY ENGINEER
 SURVEYED DEC. 1954 - MARCH, 1955
 SURVEYED UNDER INSTRUCTIONS OF THE
 BOARD OF SUPERVISORS PER ORDER DATED
 DECEMBER 11, 1951
 BEARINGS ARE BASED ON THE BEARING OF
 GLADSTONE AVENUE AS SHOWN ON C.S.B.-2346-4
 F.B. 1842-9-100
 FIELD WORK BY.....J.N. DOUGHERTY
 OFFICE WORK BY.....G.D. BAILEY
 CHECKED BY.....D.M. FINLEY
 S.H. MILLER

INDEX 47

CSB-2528-2
 A1 OF A3



A PORTION OF
THE S.E. 1/4 OF SECTION 10
T.1.S. R.10.W.

A PORTION OF
THE S.W. 1/4 SECTION 3
T.1.S. R.10.W.

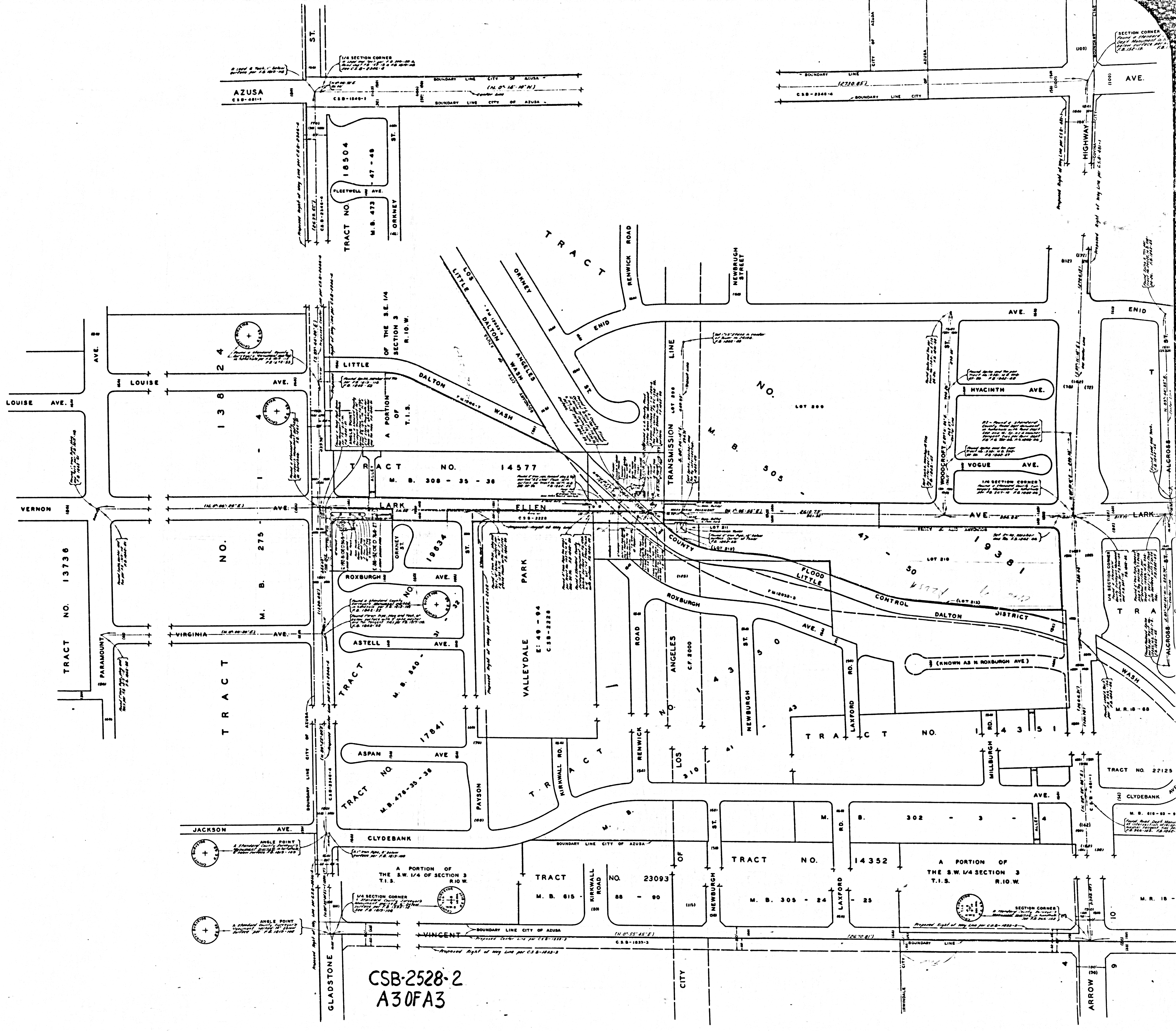
CSB-2528-2
A2 OF A3

A PORTION OF
THE N.W. 1/4 OF SECTION 10
T.1.S. R.10.W.

R. S. 63 - 42

0643

0643



CSB-2528-2
A30FA3

SECTION CORNER
Point of Standard
Meridian
C.S.B. 1887-10

SECTION CORNER
Point of Standard
Meridian
C.S.B. 1887-10

1/4 SECTION CORNER
Point of Standard
Meridian
C.S.B. 1887-10

ANGLE POINT
Point of Standard
Meridian
C.S.B. 1887-10

ANGLE POINT
Point of Standard
Meridian
C.S.B. 1887-10