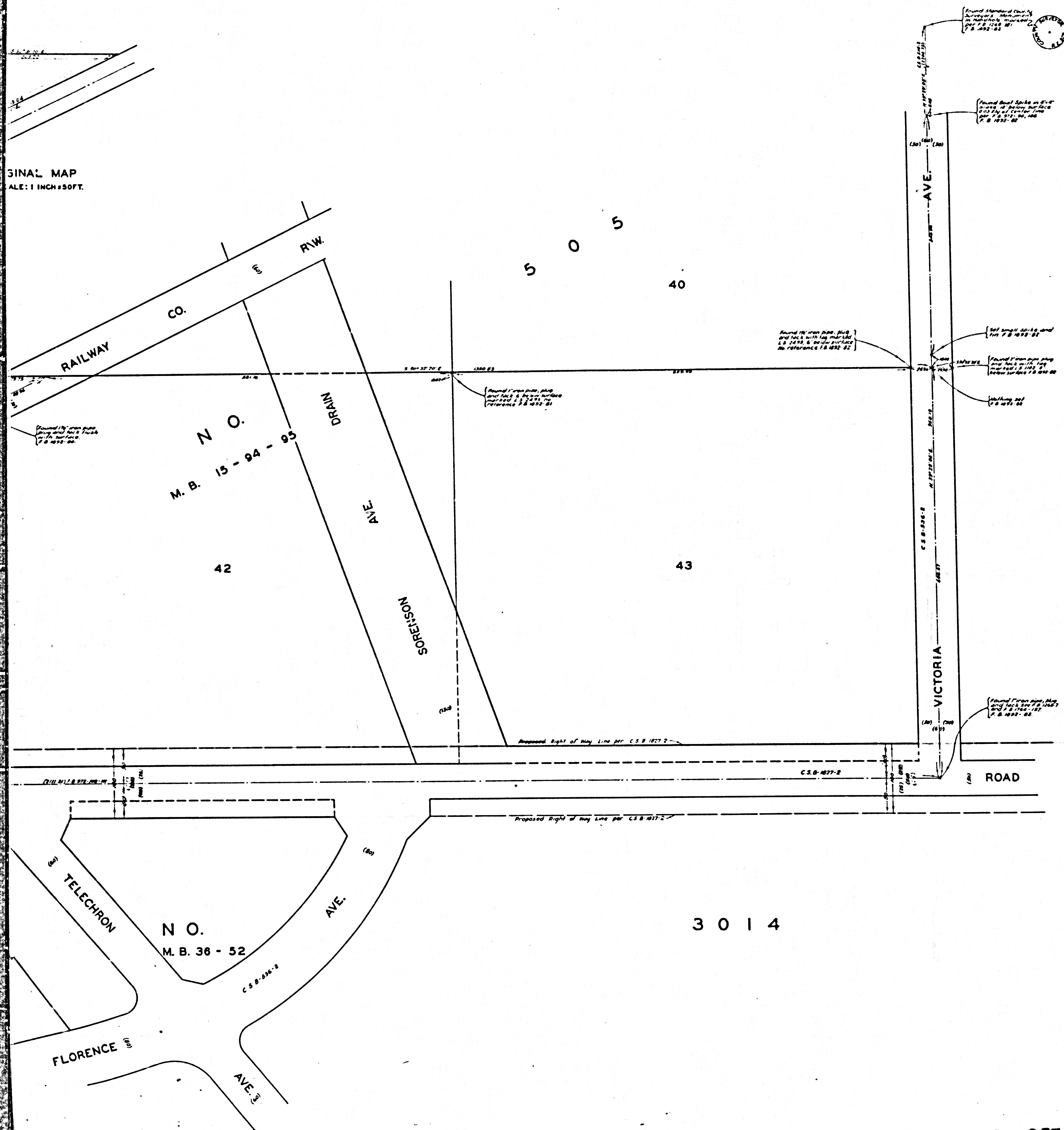


SIGNAL MAP  
SCALE: 1 INCH = 50 FT.

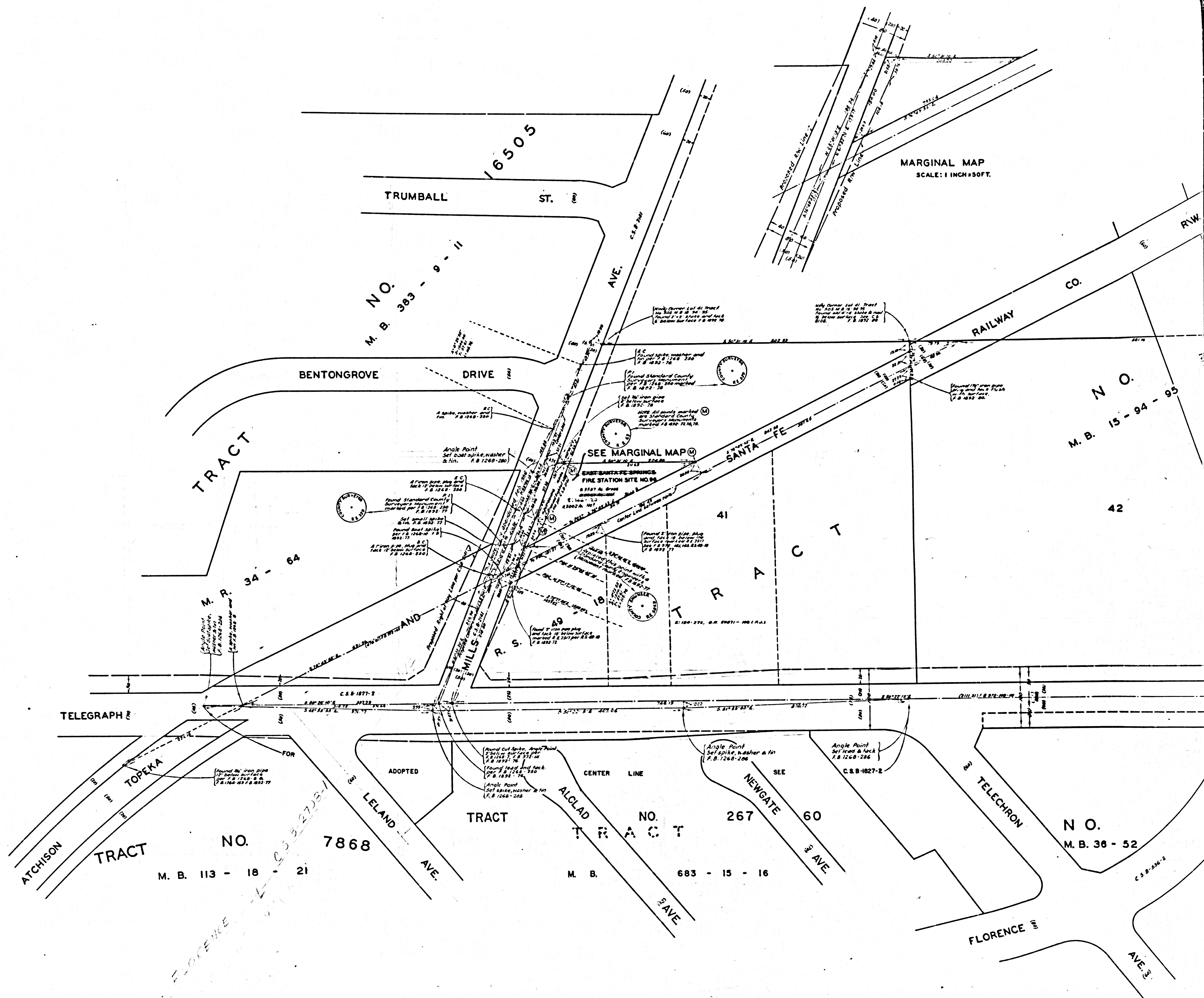


LOS ANGELES COUNTY  
 COUNTY OF LOS ANGELES  
 MAP OF  
 EAST SANTA FE SPRINGS  
 FIRE STATION SITE NO. 96  
 IN THE  
 CONSOLIDATED COUNTY FIRE PROTECTION DISTRICT  
 (SOUTH WHITTIER AREA)  
 BEING  
 A PORTION OF LOT 41, BLOCK 2, TRACT  
 NO. 505, M. B. 15-94-95.  
 COUNTY SURVEYORS MAP NO. B-2530  
 SCALE: 1 INCH = 50 FT.

JOB NUMBER 0801.38  
 WILLIAM J. FOX - COUNTY ENGINEER  
 SURVEYED APRIL 1955  
 SURVEYED ON REQUEST OF THE CHIEF ENGINEER  
 COUNTY FIRE PROTECTION DISTRICTS UNDER  
 SEC. 78, ORD. 4098 BY LETTER DATED MAR. 15, 1955  
 BEARINGS ARE BASED ON THE BEARING OF  
 MILLS AVE. AS SHOWN ON C.S.B. 2141  
 F.B. 1952-75-82  
 FIELD WORK BY D. E. HOLMES  
 OFFICE WORK BY L. C. WILSON  
 C. E. DROWN  
 CHECKED BY D. M. FINLEY

INDEX 54  
 Revised Feb 1958 C.E.D.  
 Name changed Mar 1956 C.E.D.  
 Revised Aug 1956 C.E.D.  
 Printed Sept 1963 ...

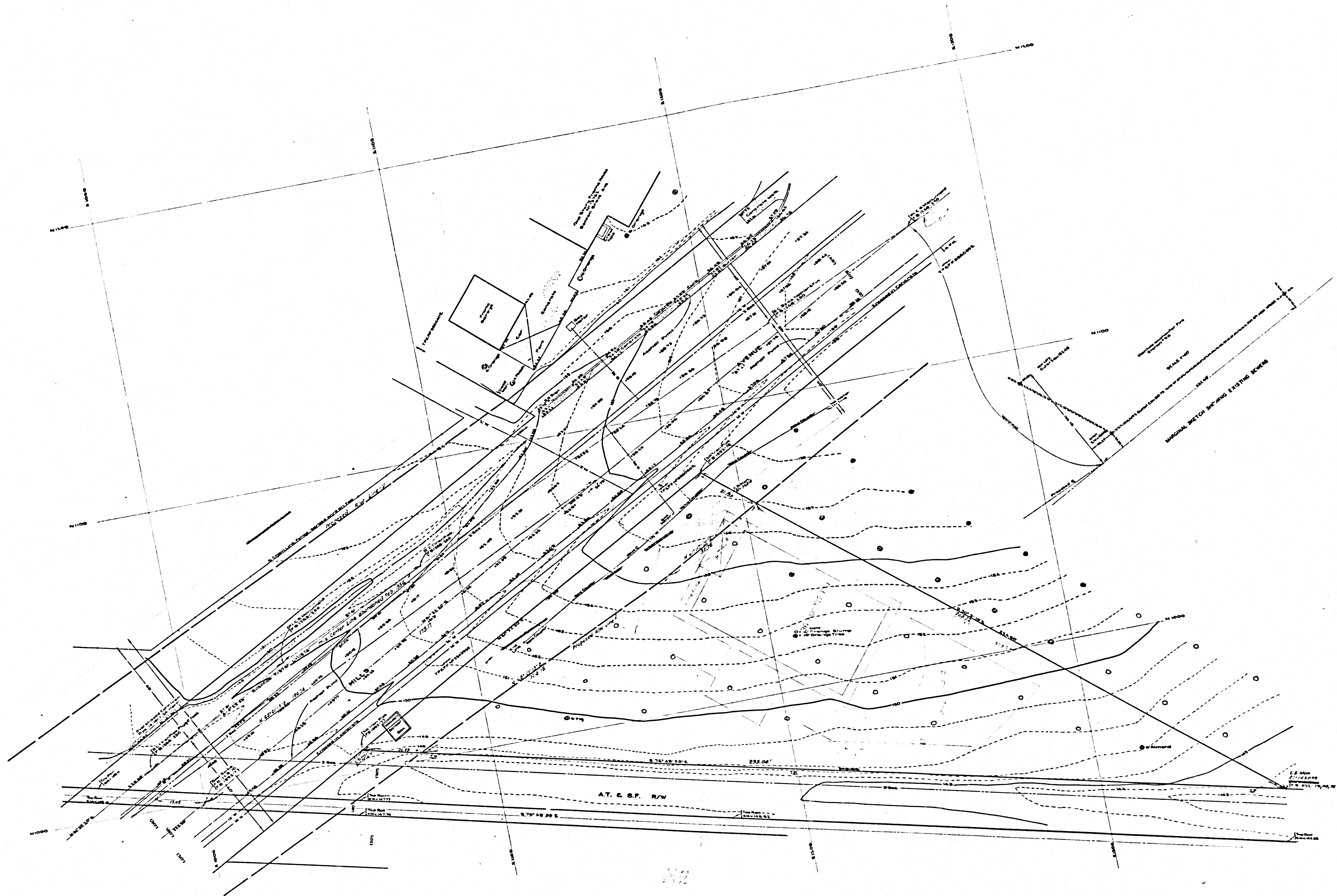
CSB-2530  
 A10FA3



MARGINAL MAP  
SHOWING  
TOPOGRAPHY  
SCALE: 1 INCH = 10 FT.  
FIELD WORK BY.....J.P. MENNE  
OFFICE WORK BY.....T.M. PALMERI  
CHECKED BY.....W.A. BRUSH  
F.B. 1260 F.B. 1892

DATUM - MEAN SEA LEVEL  
ELEVATIONS SHOWN HEREON ARE BASED  
ON THE LOS ANGELES COUNTY PRECISE  
LEVEL NET B.M. 4-7

CSB-2530  
A2 OF A3



MARGINAL MAP  
 SHOWING  
 TOPOGRAPHY  
 SCALE: 1 INCH = 10 FT.  
 FIELD WORK BY... J.P. MENNE  
 OFFICE WORK BY... T.M. PALMER  
 CHECKED BY... W.A. BRUSH  
 F.B. 1208 F.B. 1892

DATUM - MEAN SEA LEVEL  
 ELEVATIONS SHOWN HEREON ARE BASED  
 ON THE LOS ANGELES COUNTY PRECISE  
 LEVEL NET B.M. 4-7

CSB-2530  
 A30FA3