

COUNTY OF LOS ANGELES  
 MAP OF  
**BARREL SPRINGS ROAD**  
 FROM  
 77<sup>TH</sup> STREET EAST  
 TO  
 SIERRA HIGHWAY  
 COUNTY SURVEYORS MAP NO. B-2533  
 SHEET NO. 1 OF 4 SHEETS  
 SCALE: 1 INCH = 100 FT.

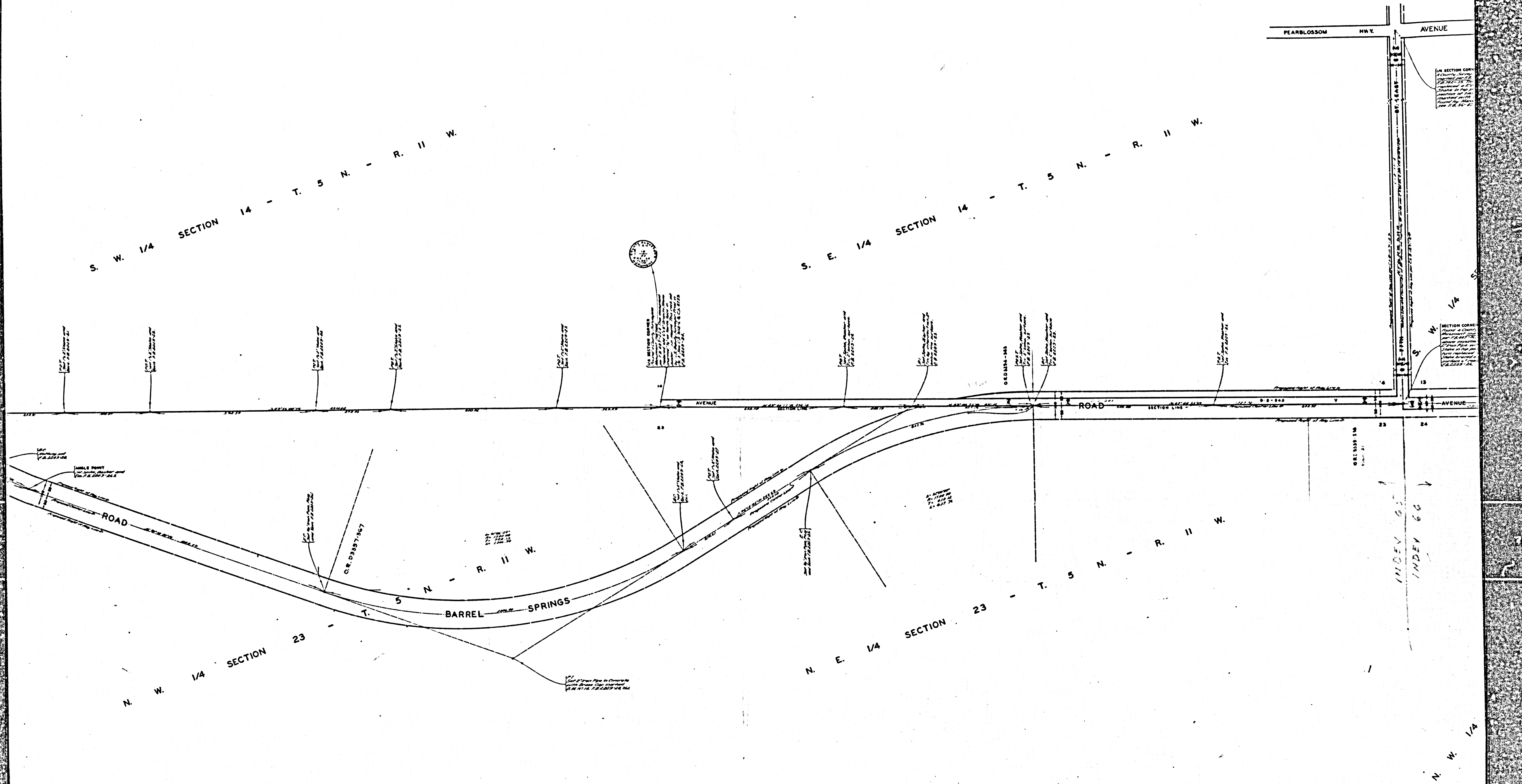
JOB NUMBER 007404  
 JOHN A. LAMBIE - COUNTY ENGINEER  
 SURVEYED NOV. 1955 - JULY 1956  
 SURVEYED ON REQUEST OF THE REGIONAL  
 PLANNING COMMISSION UNDER SEC. 79,  
 ORD. 4089, BY LETTER DATED APRIL 1, 1952  
 AND BY BOARD ORDER DATED DEC. 11, 1951

BEARINGS ARE BASED ON THE BEARING OF  
 NORTH LINE SECTION 21 - T. 5 N. - R. 11 W. PER C.S.  
 B-1452-1  
 F.B. 1851-135-149  
 F.B. 2209-7-28  
 F.B. 2223-175-223  
 FIELD WORK BY.....R. L. WILLEY  
 OFFICE WORK BY.....L. C. WILSON  
 CHECKED BY.....C. J. GALLI  
 Revised Sept. 1962. d.d. Edwards

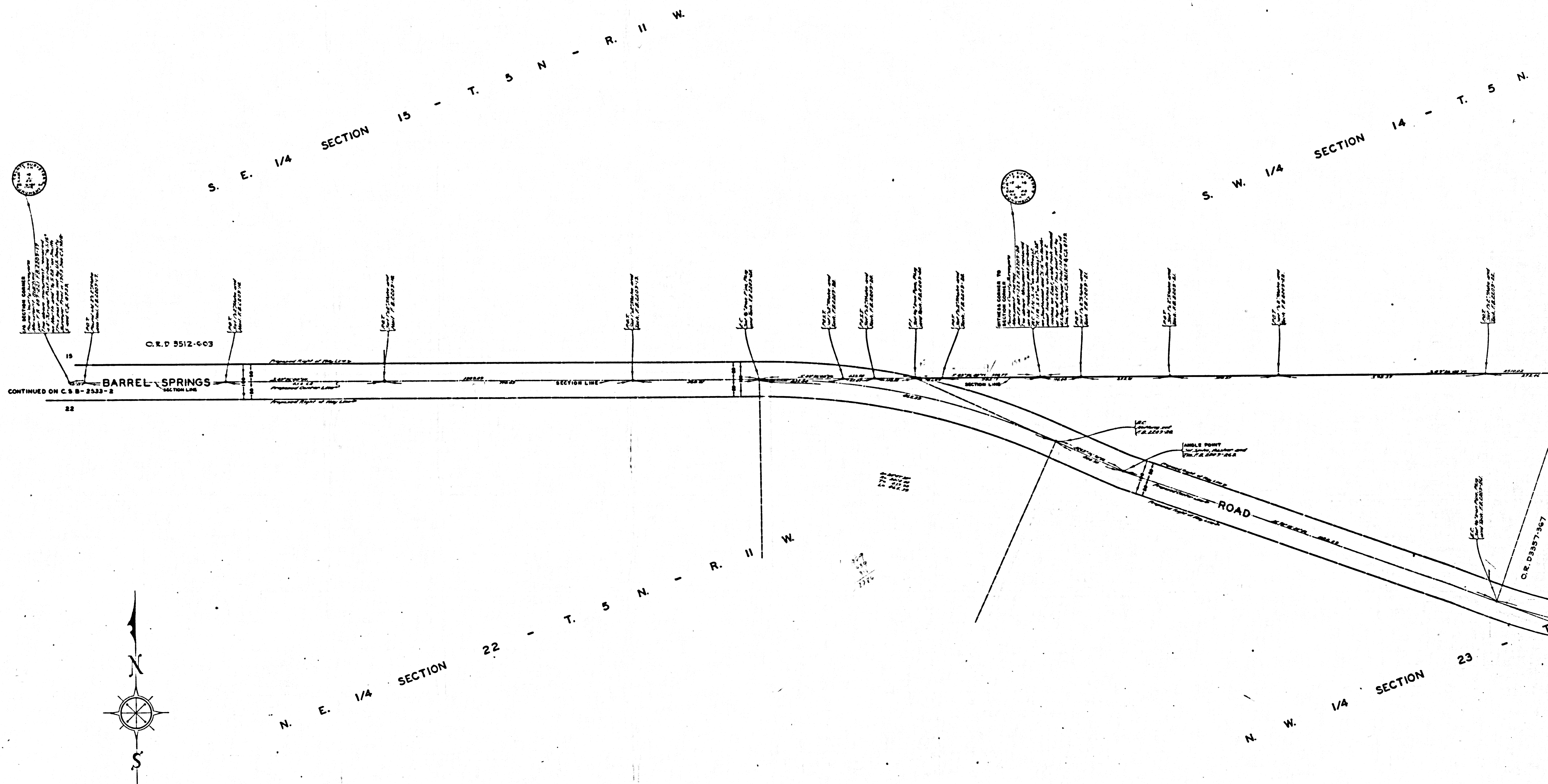
NOTE: SHEET BOUNDARIES  
 SHEET 1 FROM 77<sup>TH</sup> STREET EAST  
 TO 1/4 SECTION CORNER, SECTIONS  
 15 AND 22 - T. 5 N. - R. 11 W.  
 SHEET 2 FROM 1/4 SECTION CORNER,  
 SECTIONS 15 AND 22 - T. 5 N. - R. 11 W.  
 TO WEST LINE SECTION 16 - T. 5 N. -  
 R. 11 W.  
 SHEET 3 FROM WEST LINE SECTION 16  
 T. 5 N. - R. 11 W. TO WEST LINE  
 SECTION 7 - T. 5 N. - R. 11 W.  
 SHEET 4 FROM WEST LINE SECTION  
 7 - T. 5 N. - R. 11 W. TO SIERRA HWY.

NOTE: ALL COUNTY SURVEYORS OR  
 COUNTY ENGINEERS MONUMENTS AS  
 SHOWN ARE 2" IRON PIPE, SET IN  
 CONCRETE WITH BRASS CAP.

CSB-2533-1  
 A1 OF A3



CSB-25331  
A20FA3



CSB-2533-1  
 A3 OF A3