

PTED BY THE 13 COUNTY ENGINEER - DECEMBER, 1961

ENGINEER - DECEMBER, 1961

47th St. E

COUNTY OF LOS ANGELES
 MAP OF
BARREL SPRINGS ROAD
 FROM
 77th STREET EAST
 TO
 SIERRA HIGHWAY
 COUNTY SURVEYORS MAP NO. B-2533
 SHEET NO. 3 OF 4 SHEETS
 SCALE: 1 INCH = 100 FT.

JOB NUMBER 0074.04

JOHN A. LAMBIE - COUNTY ENGINEER
 SURVEYED NOV. 1958 - JULY 1959

SURVEYED ON REQUEST OF THE REGIONAL
 PLANNING COMMISSION UNDER SEC. 78
 ORD. 4099, BY LETTER DATED APRIL 1, 1952
 AND BY BOARD ORDER DATED DEC. 11, 1951

BEARINGS ARE BASED ON THE BEARING OF
 NORTH LINE SECTION 21 - T. 5 N. - R. 11 W. PER C. S.
 B-1452-1

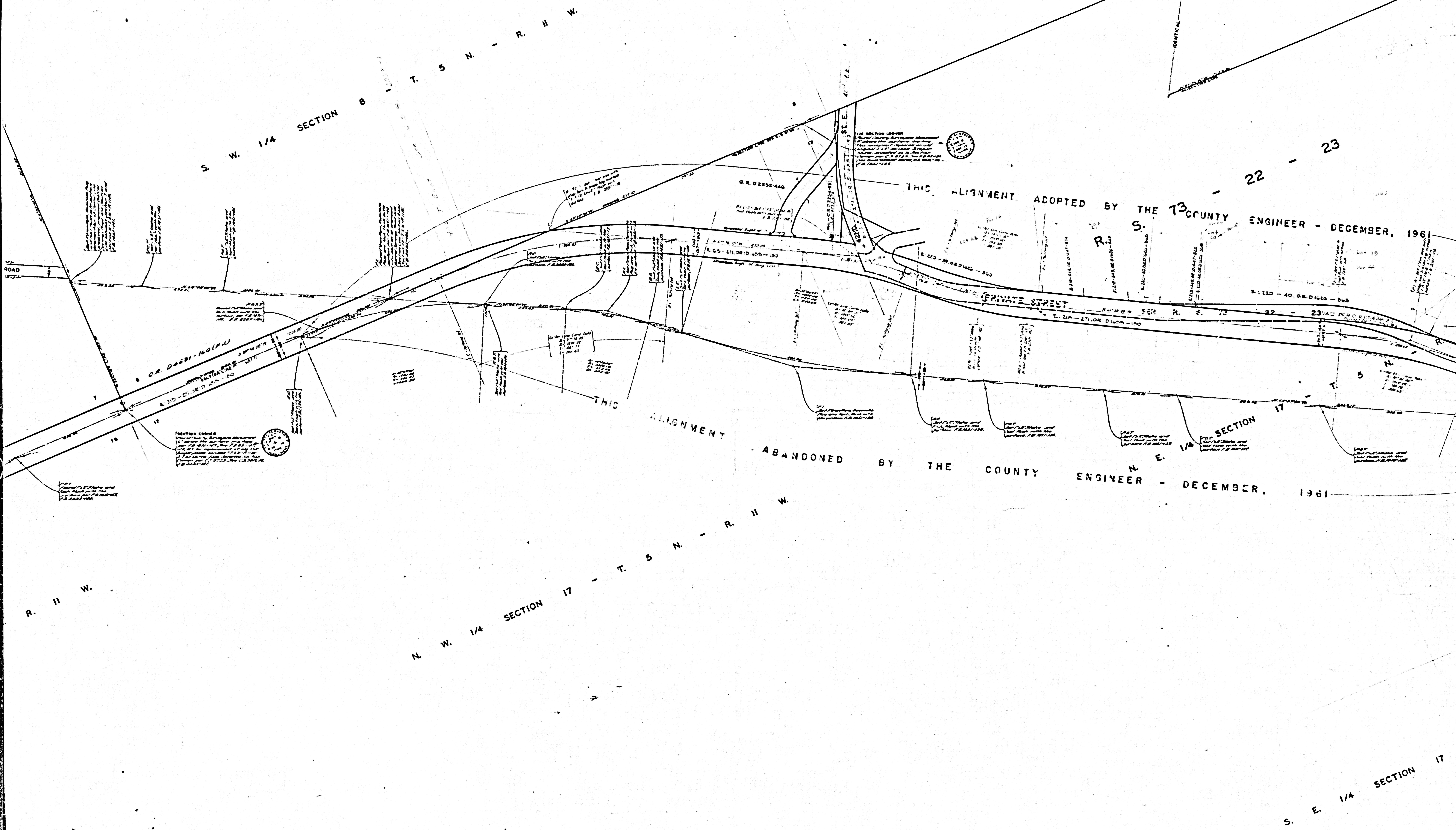
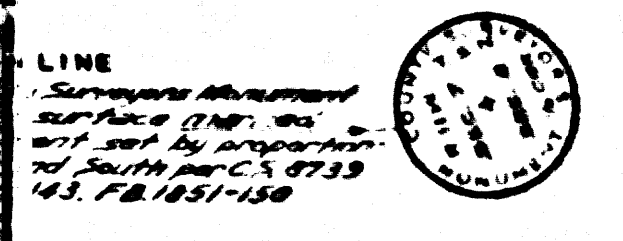
F. B. 1951 - 175-149
 F. B. 2208 - 7 - 26
 F. B. 2225 - 175-225

FIELD WORK BY..... R. L. WILLEY
 OFFICE WORK BY..... L. C. WILSON
 CHECKED BY..... C. J. GALLI

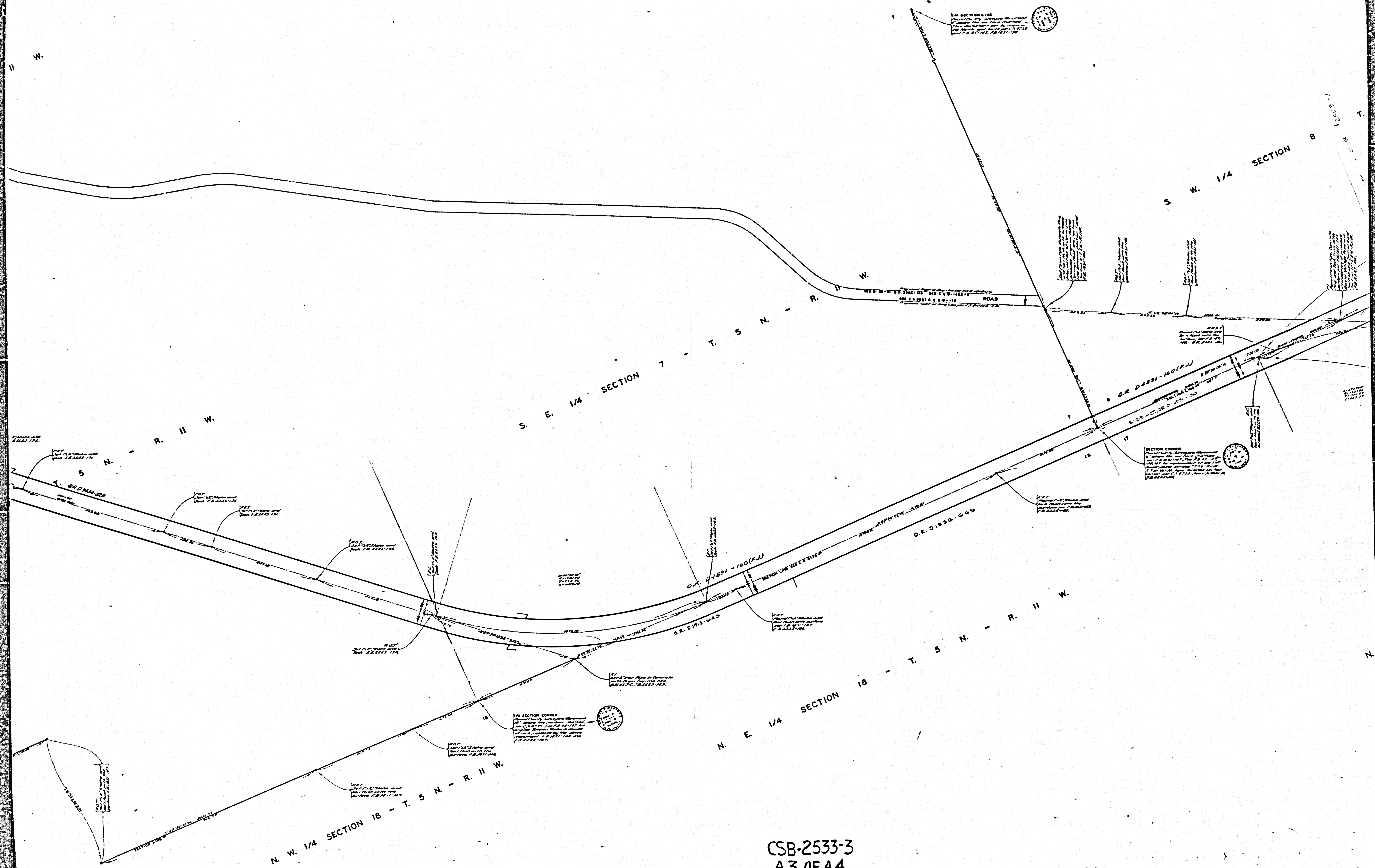
Revised December, 1960..... G. D. Bailey
 Revised Through 8 13 21 Dec 60 : M. R.
 Revised Sept. 1963..... d. d. d.
 Approved by the Board of Supervisors, December 1963

CSB-2533-3
 A1 OF A4

INDEX 65



CSB-2533-3
A20FA4



1/4 SECTION LINE
 [Circular stamp]

SECTION CORNER
 [Circular stamp]

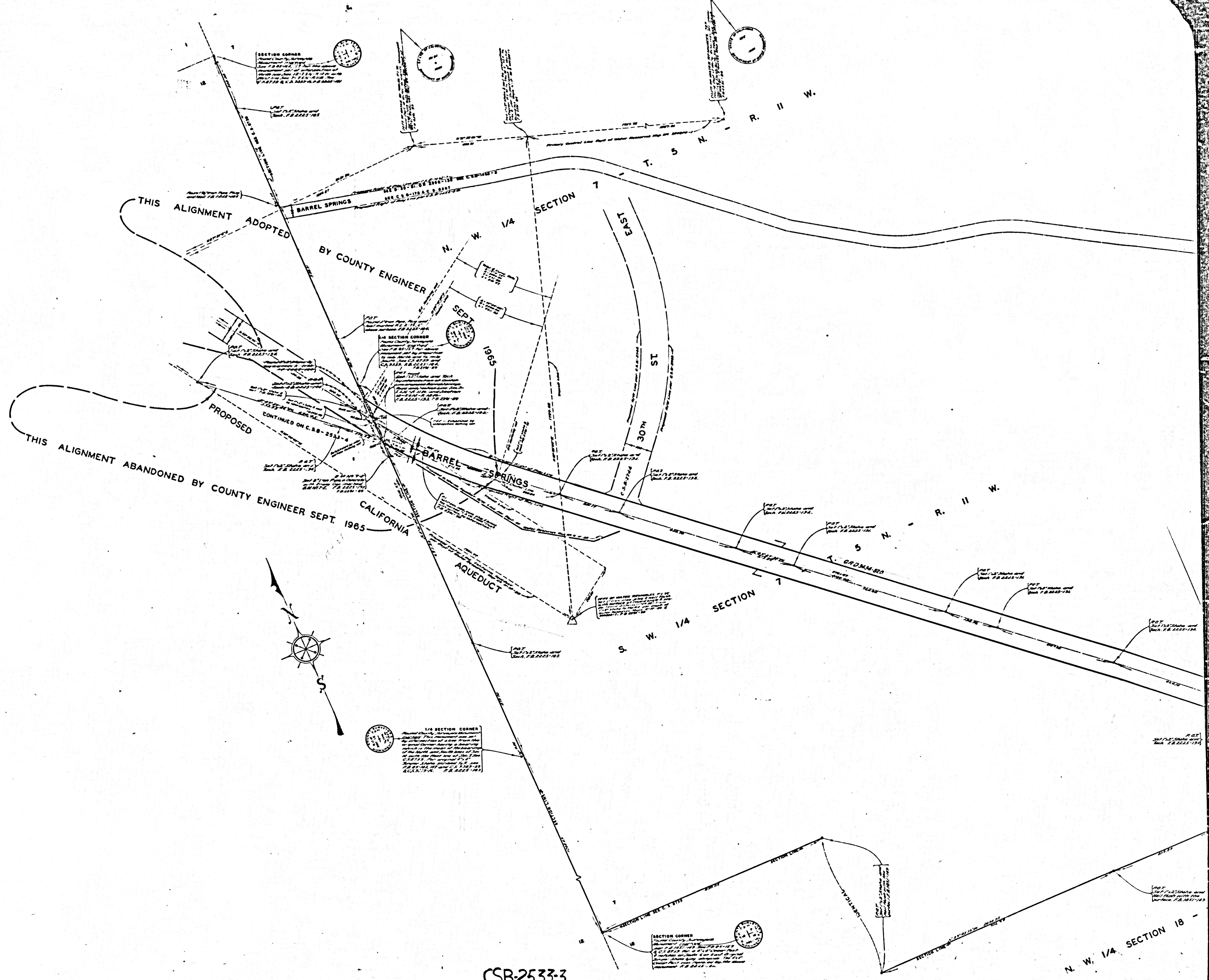
1/4 SECTION CORNER
 [Circular stamp]

[Circular stamp]

CSB-2533-3
 A3 OF A4

SHEET NO. 3 OF 4 SHEETS
COUNTY ENGINEER YUMA

SHEET NO. 3 OF 4 SHEETS
COUNTY ENGINEER YUMA



CSB-2533-3
A40FA4

N. W. 1/4 SECTION 18