

GNMENT
38

ADOPTED

T. 5 N. R. 12 BY

1/4 SECTION

25TH ST.

COUNTY ENGINEER

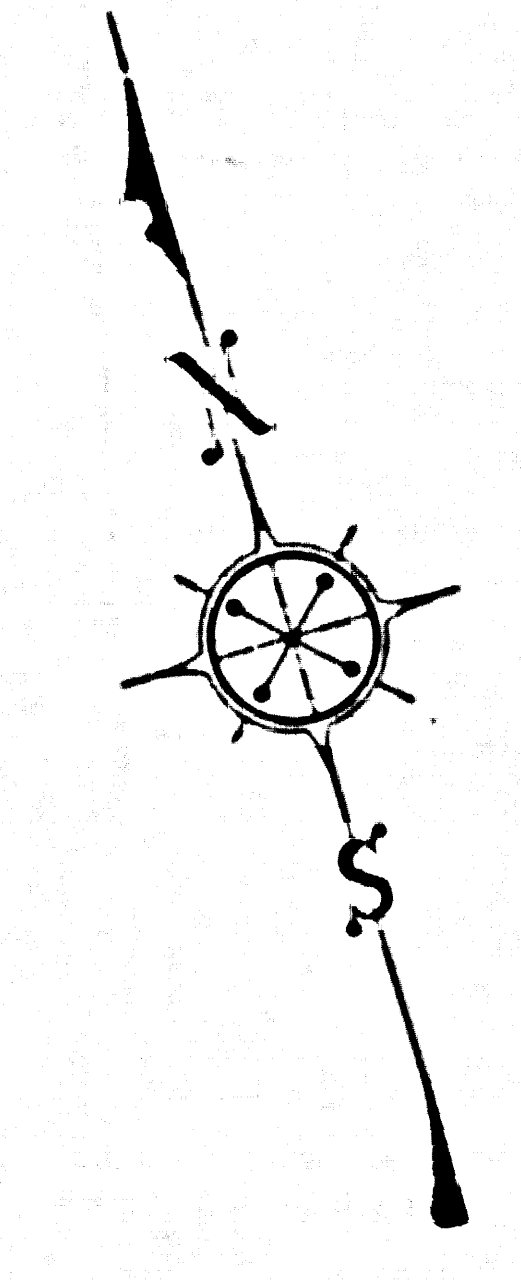
SEPT. 1965

PROPOSED

CALIFORNIA

BY COUNTY ENGINEER
SEPT. 1965

AQUEDUCT



COUNTY OF LOS ANGELES
MAP OF
BARREL SPRINGS ROAD
FROM
77TH STREET EAST
TO
SIERRA HIGHWAY

COUNTY SURVEYORS MAP NO. B-2533
SHEET NO. 4 OF 4 SHEETS
SCALE = 1 INCH = 100 FT.

JOB NUMBER 0074.04

JOHN A. LAMBIE - COUNTY ENGINEER
SURVEYED NOV. 1955 - JULY 1956

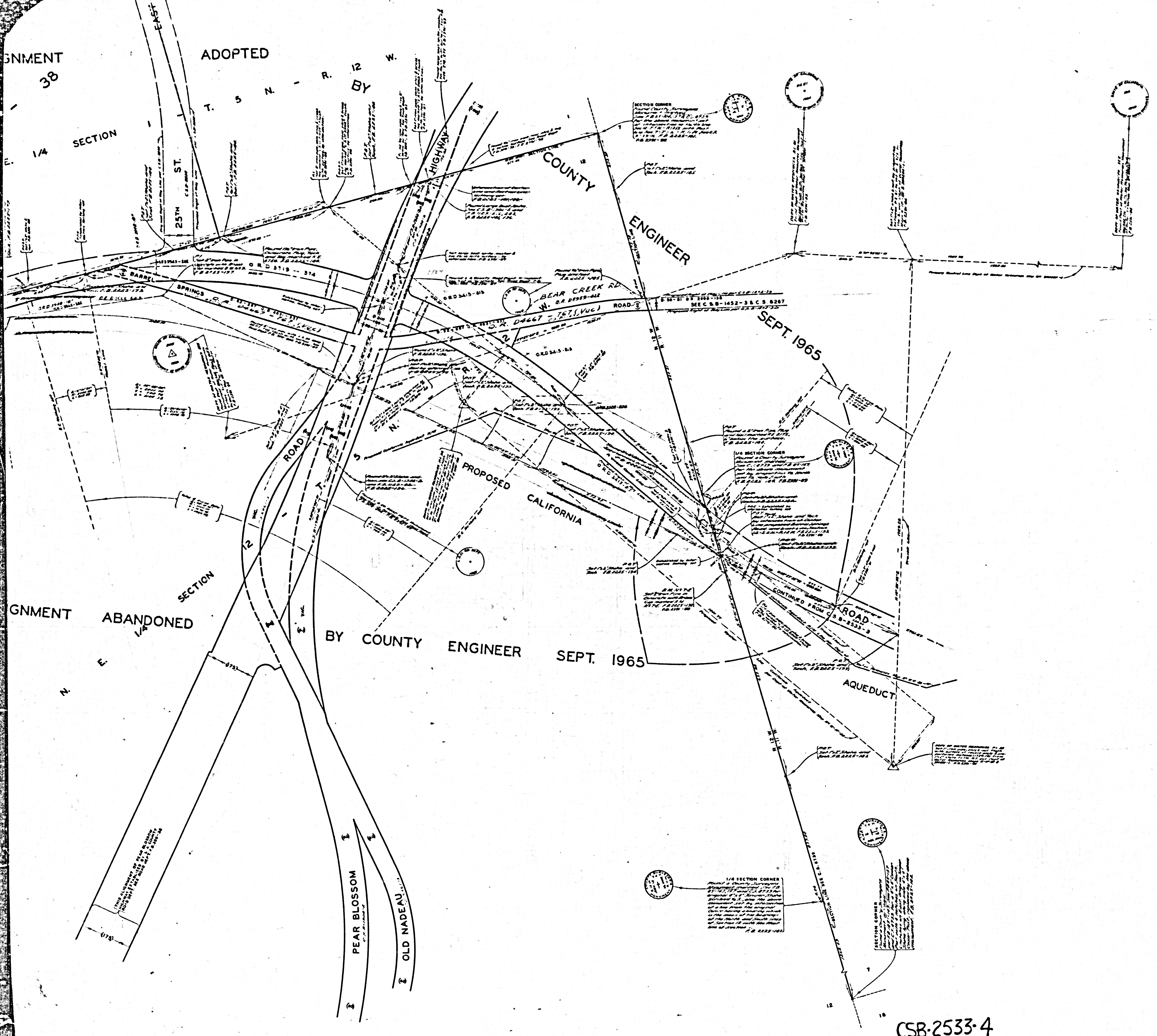
SURVEYED ON REQUEST OF THE REGIONAL
PLANNING COMMISSION UNDER SEC. 79,
ORD. 4099, BY LETTER DATED APRIL 1, 1952
AND BY BOARD ORDER DATED DEC. 11, 1951

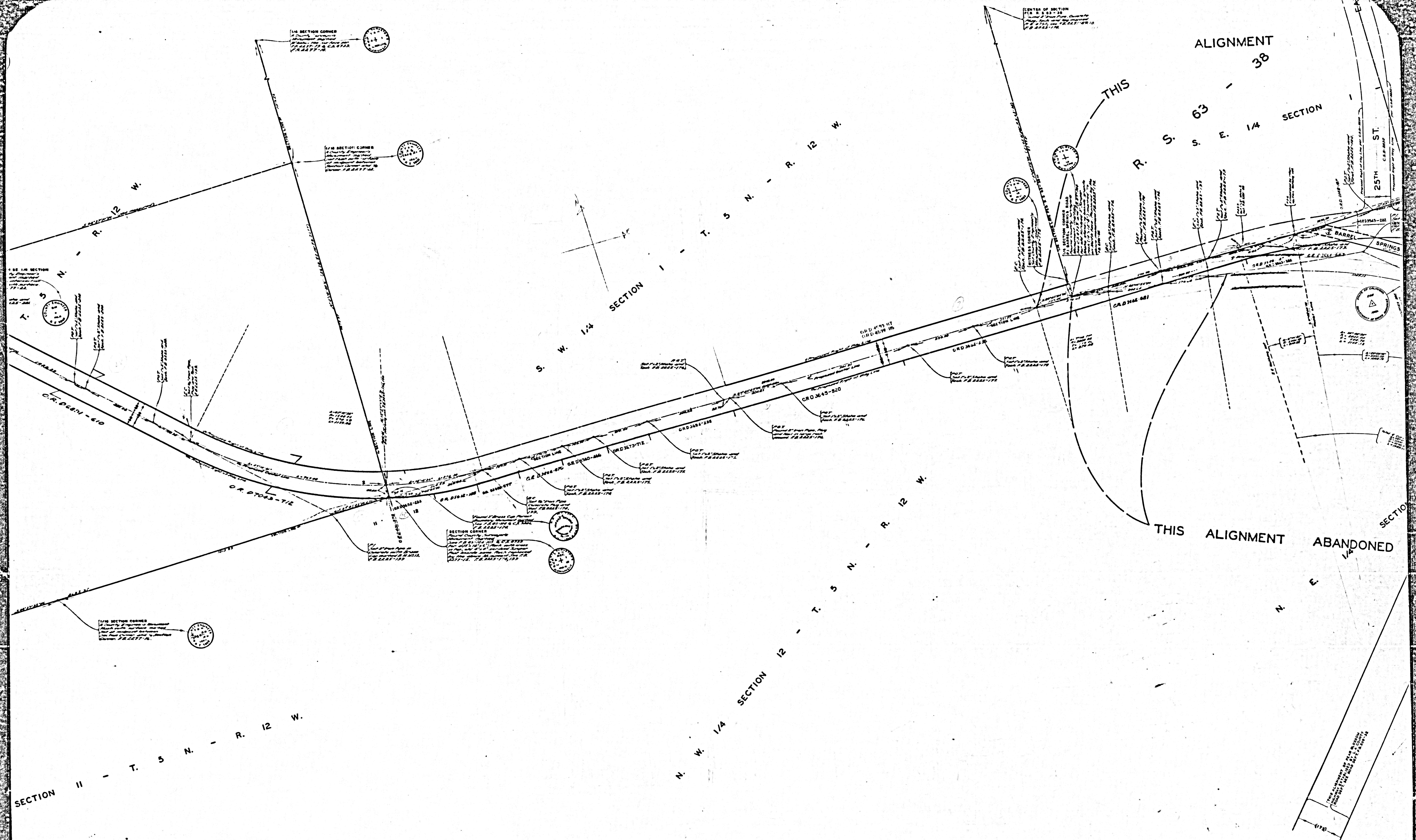
BEARINGS ARE BASED ON THE BEARING OF
NORTH LINE SECTION 21-T. 5 N. - R. 12 W. PER C.S.
B-1452-1

F.B. 1951-135-149
F.B. 2209-7-26
F.B. 2225-175-225

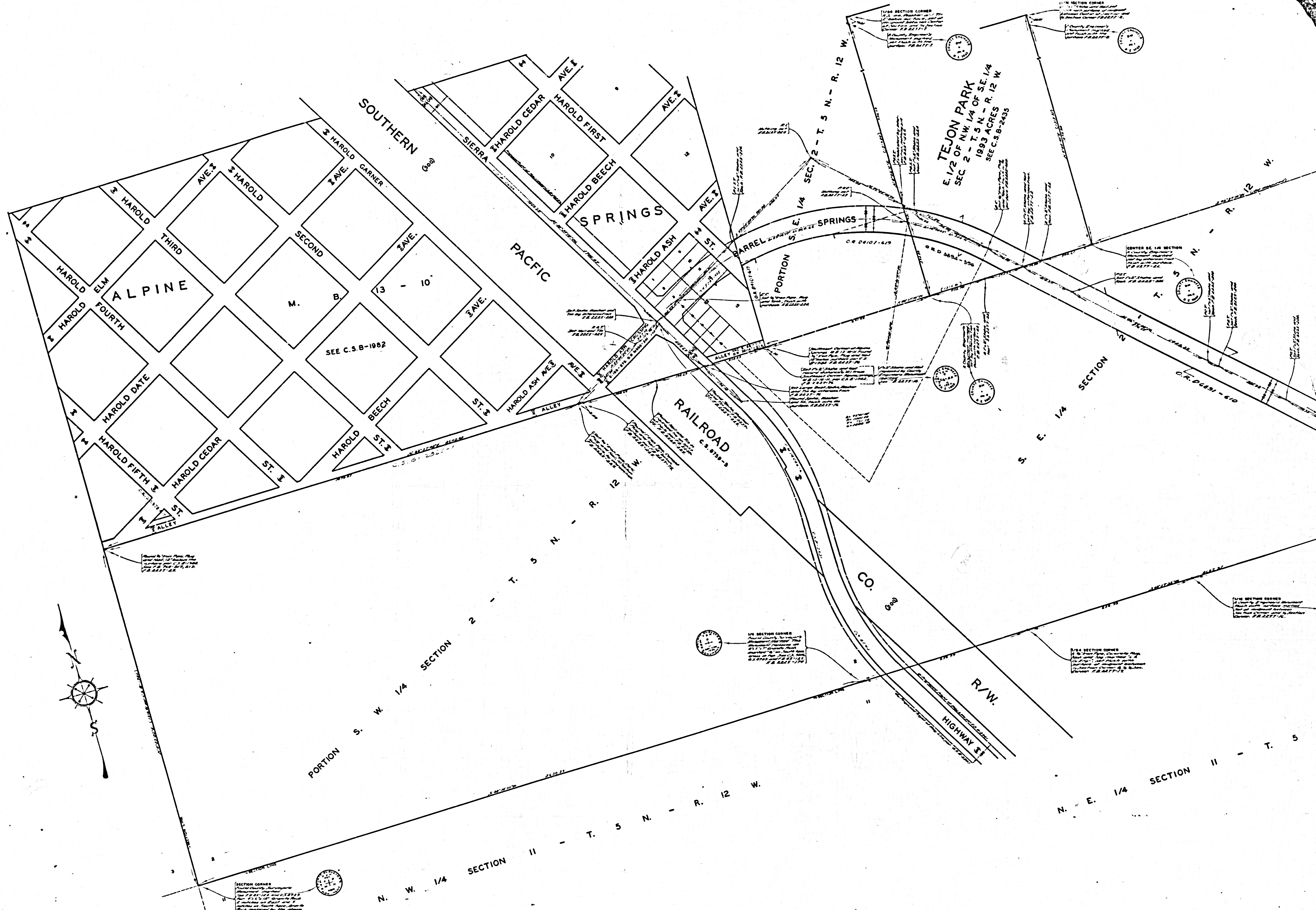
FIELD WORK BY.....R. L. WILLEY
OFFICE WORK BY.....L. C. WILSON
CHECKED BY.....C. J. GALLI
Revised Sept. 1963 by J. L. Edwards
Revised by "S. S. 100" 1/2" MINIMUM SCALE

CSB-2533-4
A1 OF A 3





CSB-2533-4
A2 OF A3



TEJON PARK
 E. 1/2 OF NW 1/4 OF SE. 1/4
 SEC 2 - T. 5 N. - R. 12 W.
 SEE C.S.B. 2435

CSB-2533-4
 A3 0FA 3