

COUNTY OF LOS ANGELES
 MAP OF
**STREETS IN THE BRANDON STREET
 SANITARY SEWER DISTRICT**

COUNTY SURVEYORS MAP NO. B-2534
 SCALE: 1 INCH = 100 FT.

JOB NUMBER 030300

JOHN A. LAMBIE - COUNTY ENGINEER
 SURVEYED FEB-APRIL 1950

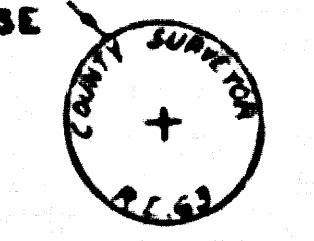
SURVEYED ON REQUEST OF THE COUNTY
 ENGINEER UNDER AUTHORITY OF THE
 BOARD OF SUPERVISORS BY ORDER DATED
 FEB. 26, 1948

BEARINGS ARE BASED ON THE CALIFORNIA
 COORDINATE SYSTEM ZONE 7 PER ACT 8351
 GENERAL LAWS SEE C.S. 9423

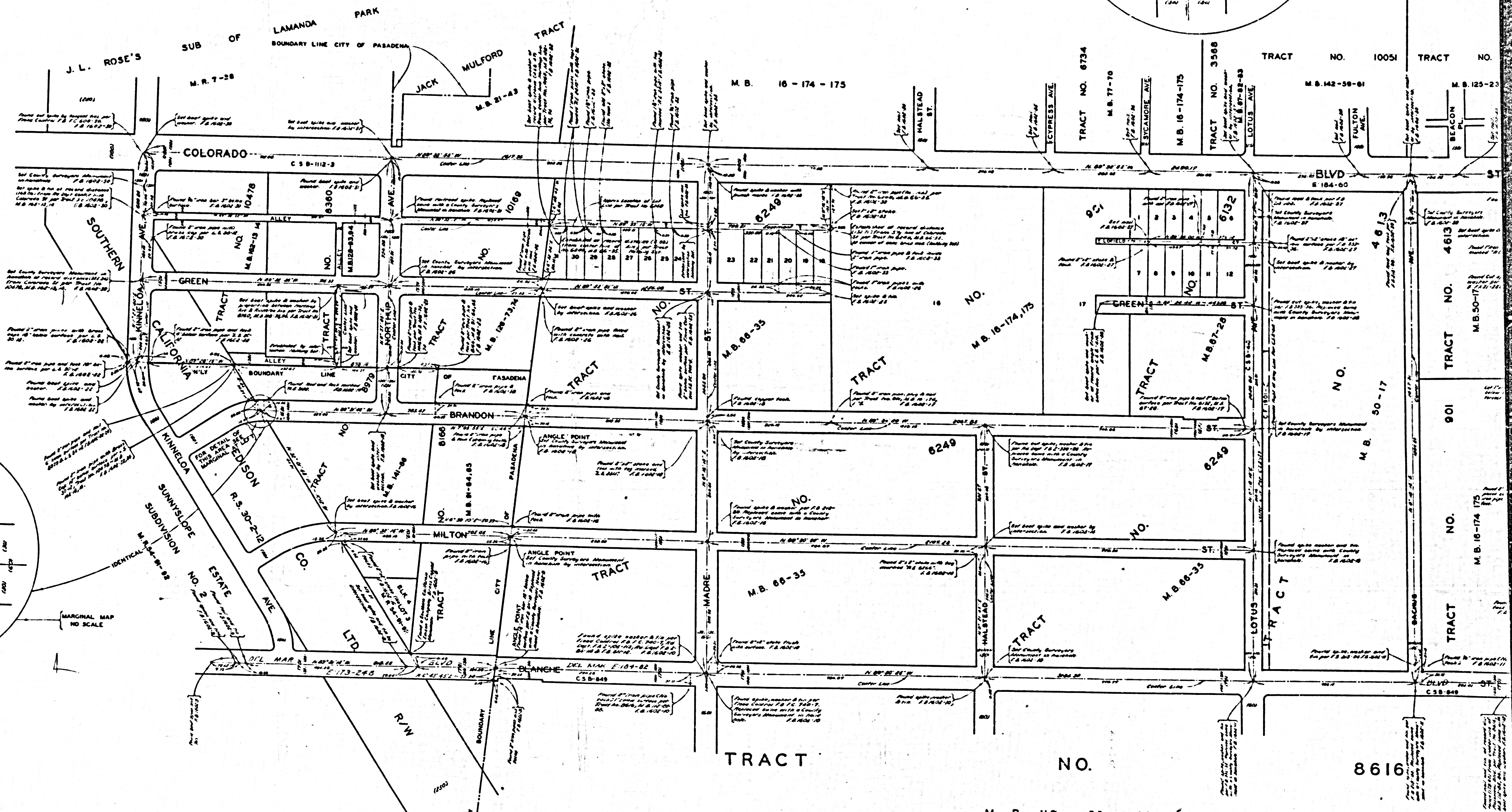
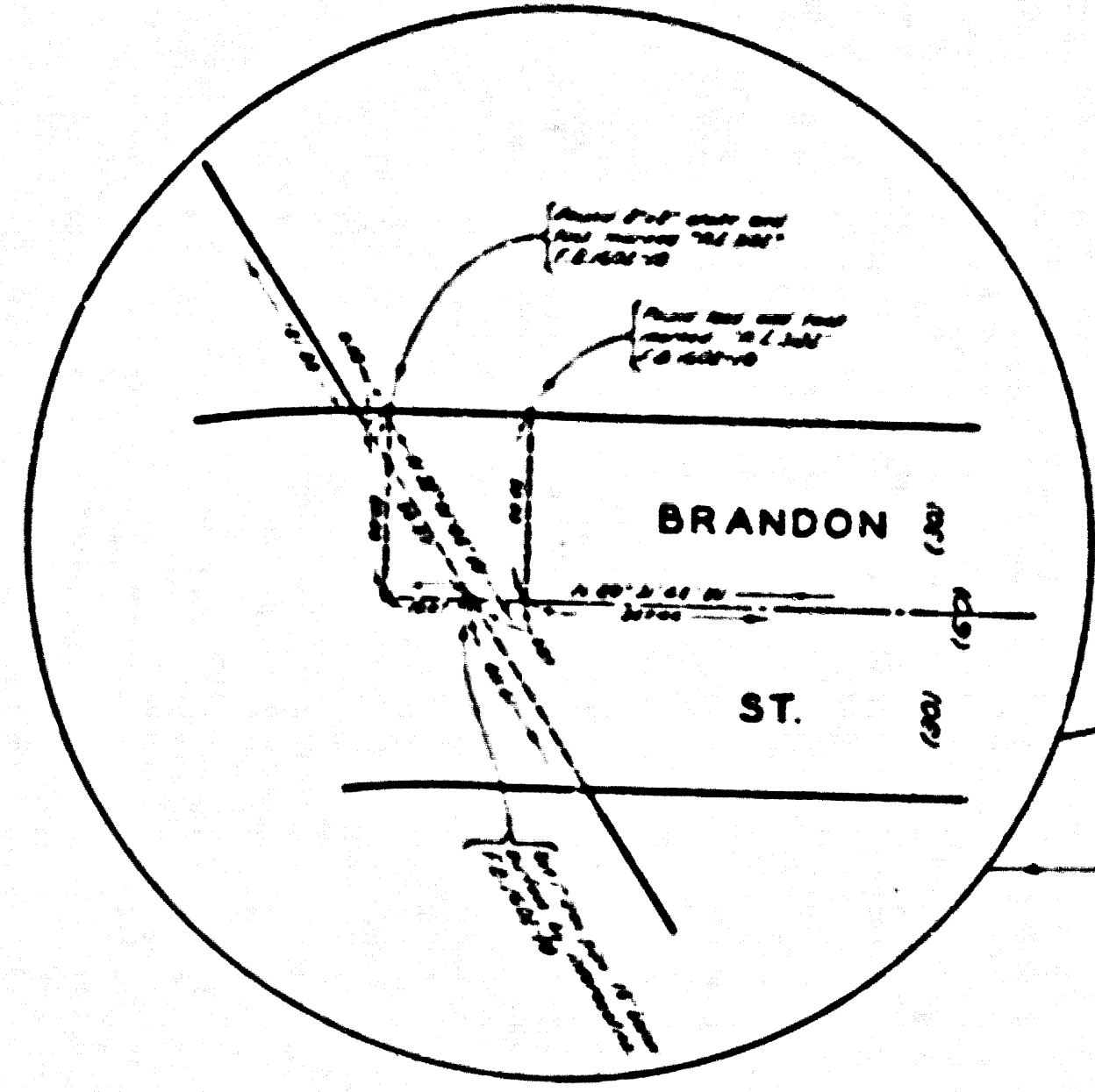
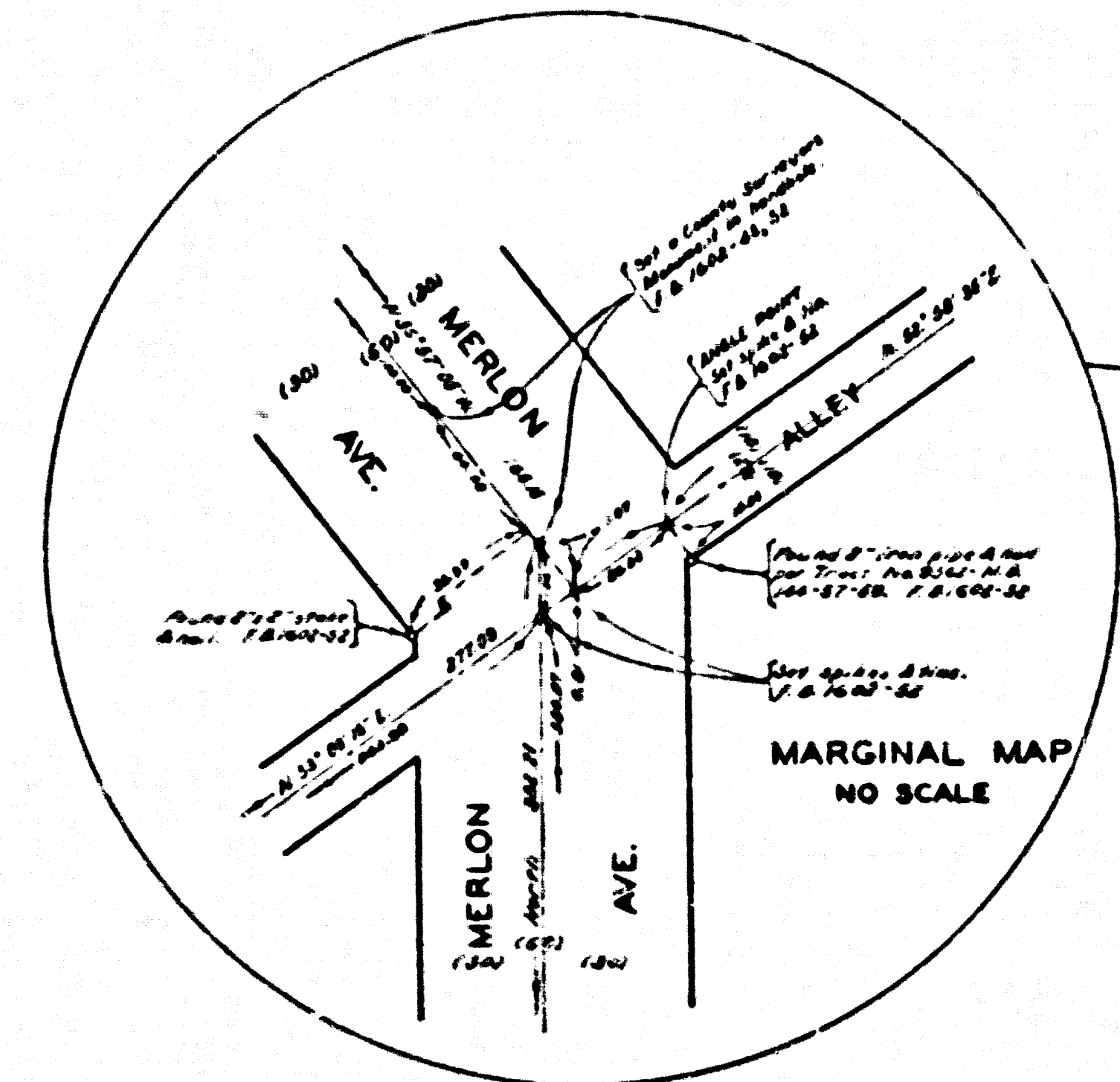
F. S. 1602-9-70
 FIELD WORK BY..... N. R. SMITH
 OFFICE WORK BY..... C. W. CO.
 CHECKED BY..... W. D. REYNOLDS
 S. H. MILLER
 D. M. FRILEY

THIS SURVEY MADE TO ESTABLISH CENTER
 LINES ON THE STREETS IN THIS AREA
 PRELIMINARY TO CONSTRUCTION OF SEWERS
 IN THE SANITARY SEWER DISTRICT
 COUNTY IMPROVEMENT NO. 1333

ALL COUNTY SURVEYORS MONUMENTS
 ARE 2 INCH IRON PIPE SET IN CONCRETE
 WITH BRASS CAP MARKED UNLESS
 SHOWN OTHERWISE



CSB-2534
 A10FA2



M. B. 112 - 85 - 88

CSB-2534
A20FA2