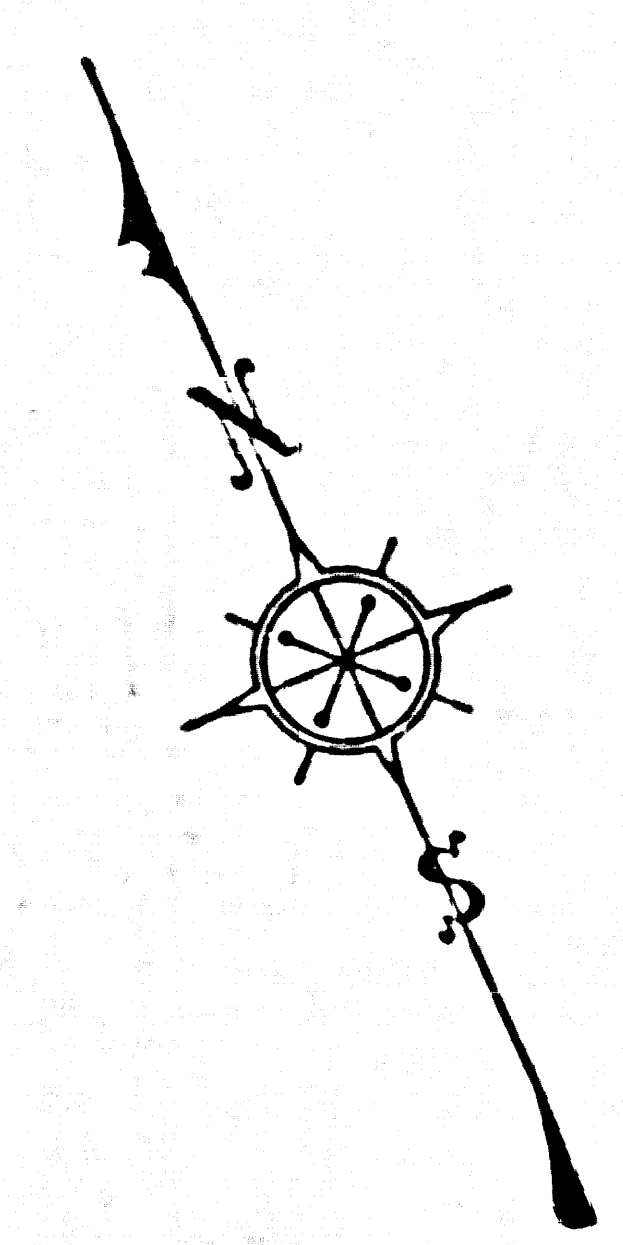


ON UPPER LEFT



COUNTY OF LOS ANGELES  
 MAP OF  
**STREETS IN THE GLEN AVENUE  
 SANITARY SEWER DISTRICT**

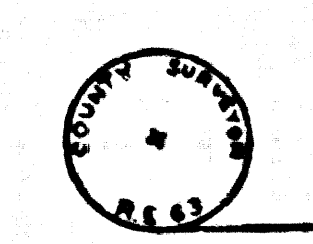
COUNTY SURVEYORS MAP NO. B-2536  
 SCALE: 1 INCH = 100 FT.

JOB NUMBER 0303.00  
 WILLIAM J. FOX - COUNTY SURVEYOR  
 SURVEYED - NOV. 1948 TO NOV. 1954  
 SURVEYED UNDER INSTRUCTIONS OF THE  
 BOARD OF SUPERVISORS PER ORDER DATED  
 FEBRUARY 26, 1948

BEARINGS ARE BASED ON THE CALIFORNIA  
 COORDINATE SYSTEM ZONE 7, PER ACT 8331  
 GENERAL LAWS. SEE C.S. 9423

F.B. 1491 - 5 - 100  
 FIELD WORK BY J.J. LANIGAN  
 OFFICE WORK BY T.H. BURNS  
 R.L. GREEN  
 CHECKED BY K.R. SPHERSON  
 C.J. GALLI

NOTE - THIS SURVEY MADE TO ESTABLISH CENTER  
 LINES ON STREETS IN THIS AREA PRELIMINARY TO CONSTRUCTION  
 OF SEWERS IN THE GLEN AVENUE SANITARY SEWER DISTRICT  
 COUNTY IMPROVEMENT NO. 1256.

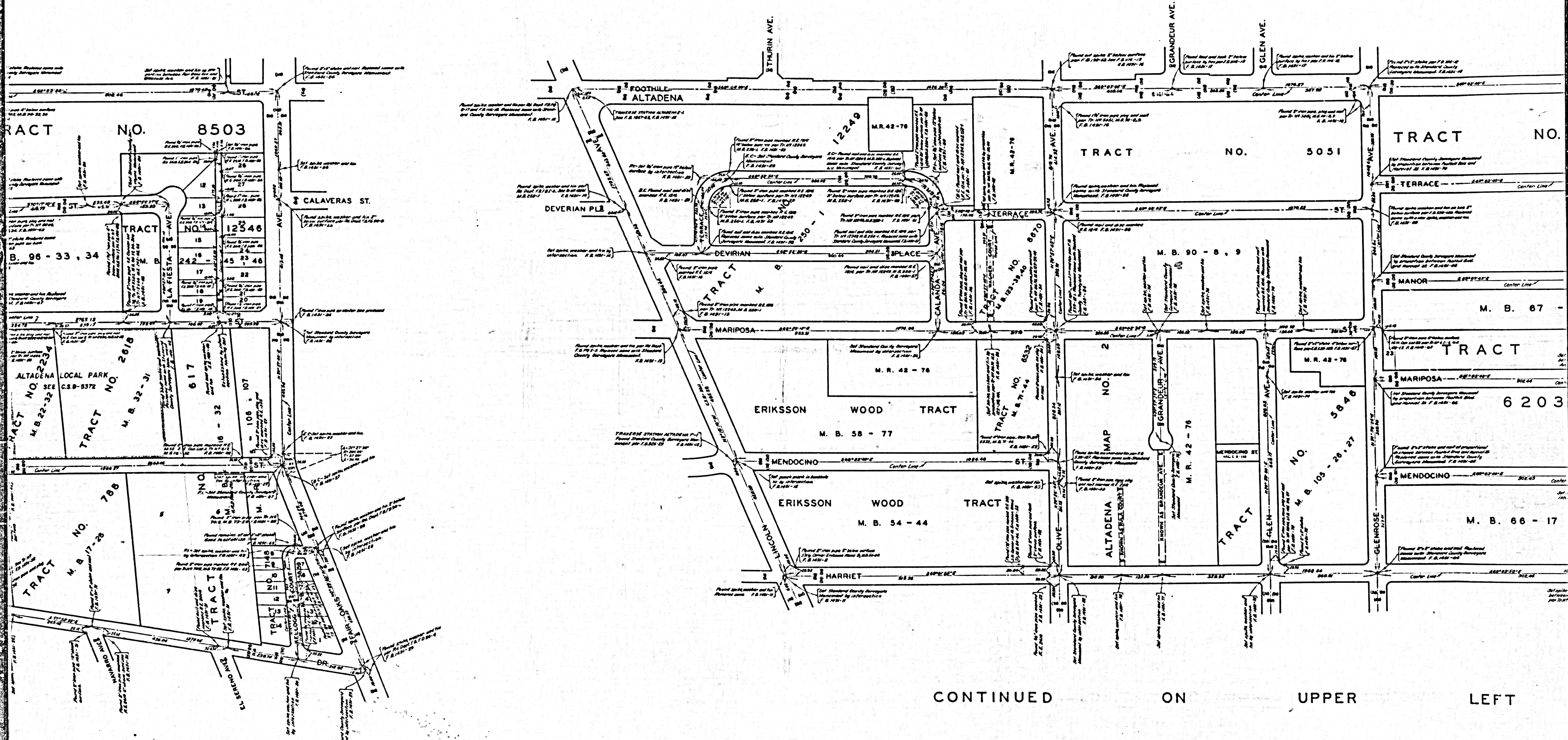


NOTE - ALL STANDARD COUNTY SURVEYORS MONUMENTS  
 ARE 2" IRON PIPES SET IN CONCRETE WITH BRASS  
 CAP MARKED UNLESS OTHERWISE SHOWN.

J.M. 53

CSB-2536  
 A10FA3

RIGHT



CONTINUED ON UPPER LEFT

CSB-2536  
A2 OF A3

CONTINUED ON LOWER RIGHT

