

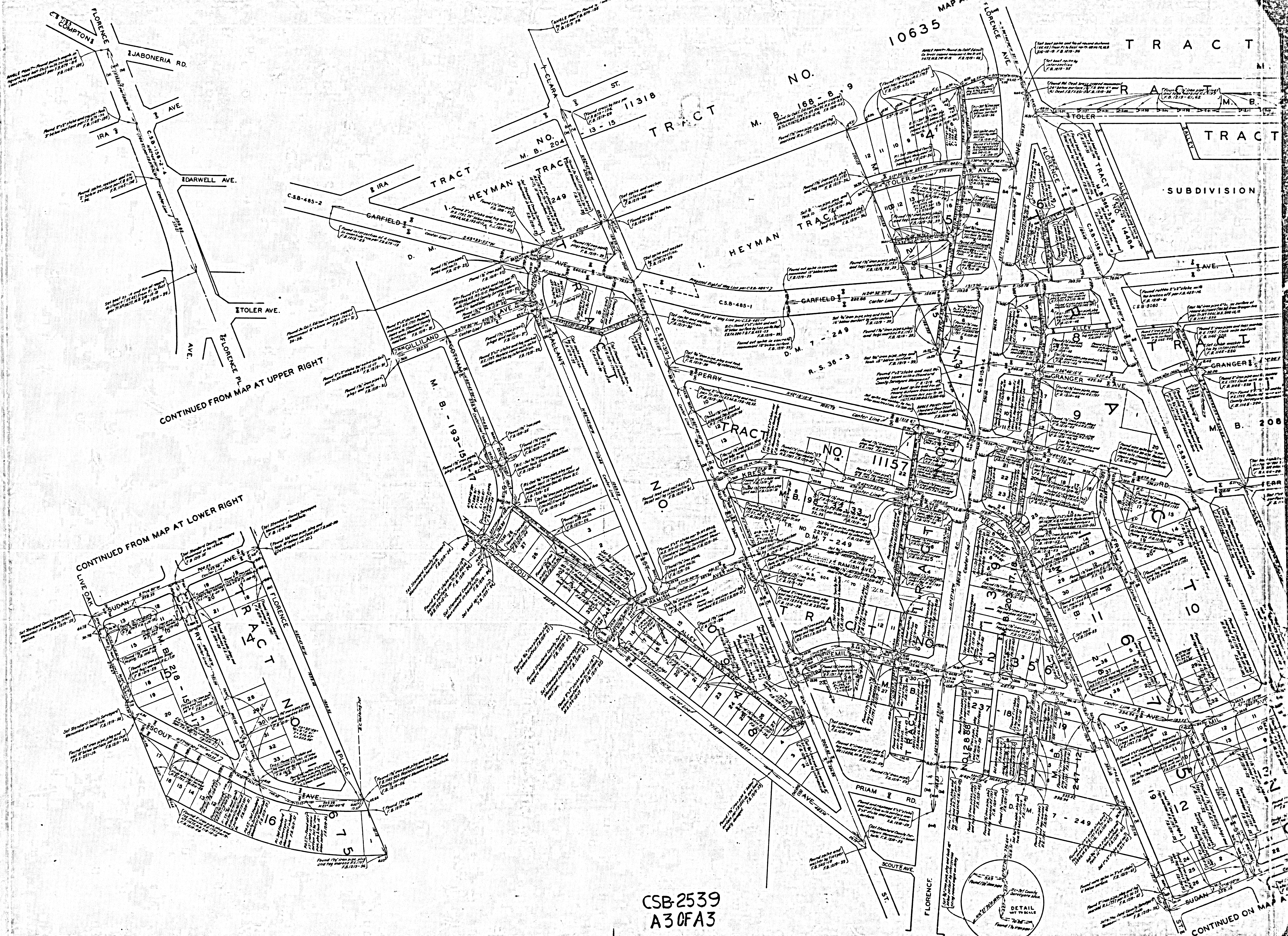
COUNTY OF LOS ANGELES
 MAP OF
**STREETS IN THE
 PERRY ROAD AND FOSTER BRIDGE BOULEVARD
 SANITARY SEWER DISTRICTS**
 COUNTY SURVEYORS MAP NO. B-2539
 SCALE: 1 INCH = 100 FT.

JOB NUMBER 0303.00
 JOHN A. LAMBIE - COUNTY ENGINEER
 SURVEYED - 1946 - 1947
 SURVEYED ON REQUEST OF THE COUNTY
 ENGINEER UNDER SEC. 79, ORD. 4099
 BY LETTER DATED JAN. 3, 1942
 BEARINGS ARE BASED ON THE CALIFORNIA
 COORDINATE SYSTEM ZONE 7 PER ACT 8351
 GENERAL LAWS SEE C.S. 9423
 F.B. 1145-157-285, F.B. 1219-5-292
 FIELD WORK BY C.A. BENSON
 R.L. WILLEY
 H.W. GUNDERSON
 A.N. HELLSTROM
 OFFICE WORK BY C.W. COX
 R.L. GREEN
 CHECKED BY J.A.J.A.

NOTE - THIS SURVEY MADE TO ESTABLISH CENTER LINES
 ON THE STREETS IN THIS AREA PRELIMINARY TO CONST-
 RUCTION OF SEWERS IN THE PERRY ROAD AND FOSTER
 BRIDGE BOULEVARD SANITARY SEWER DISTRICTS, C.I. NO.
 1163 AND C.I. NO. 1153, RESPECTIVELY.

NOTE - ALL STANDARD COUNTY SURVEYORS MONUMENTS
 ARE 2 INCH IRON PIPE SET IN CONCRETE WITH BRASS CAP
 MARKED UNLESS SHOWN OTHERWISE.
 1 M 36
 Revised Sept. 1947 ... J. J. Edwards

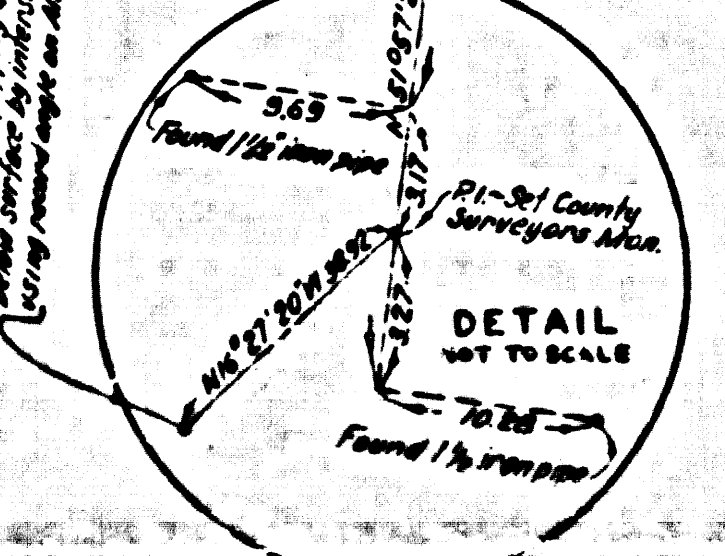
CSB-2539
 A10FA3



CONTINUED FROM MAP AT UPPER RIGHT

CONTINUED FROM MAP AT LOWER RIGHT

CSB-2539
A3 OF A3



CONTINUED ON MAP AT