

COUNTY OF LOS ANGELES
 MAP OF
**STREETS IN THE GRAYBURN ROAD
 AND LOTUS AVENUE SANITARY
 SEWER DISTRICT**
 COUNTY SURVEYORS MAP NO. B-2540
 SCALE: 1 INCH = 100 FT.

JOB NUMBER 0303.00

JOHN A. LAMBIE-COUNTY ENGINEER
 SURVEYED MAY, 1950-AUGUST, 1950

SURVEYED ON REQUEST OF THE COUNTY
 ENGINEER UNDER AUTHORITY OF THE
 BOARD OF SUPERVISORS BY ORDER DATED
 FEB. 26, 1946

BEARINGS ARE BASED ON THE BEARING OF
 THE CENTER LINE OF ROSEMEAD BLVD. AS
 SHOWN ON C.S.B.-1293.

F.B. 1637-S-67

FIELD WORK BY.....W.C. MACK
 OFFICE WORK BY.....G.D. BAILEY
 CHECKED BY.....S.H. MILLER
 C.F. 6088

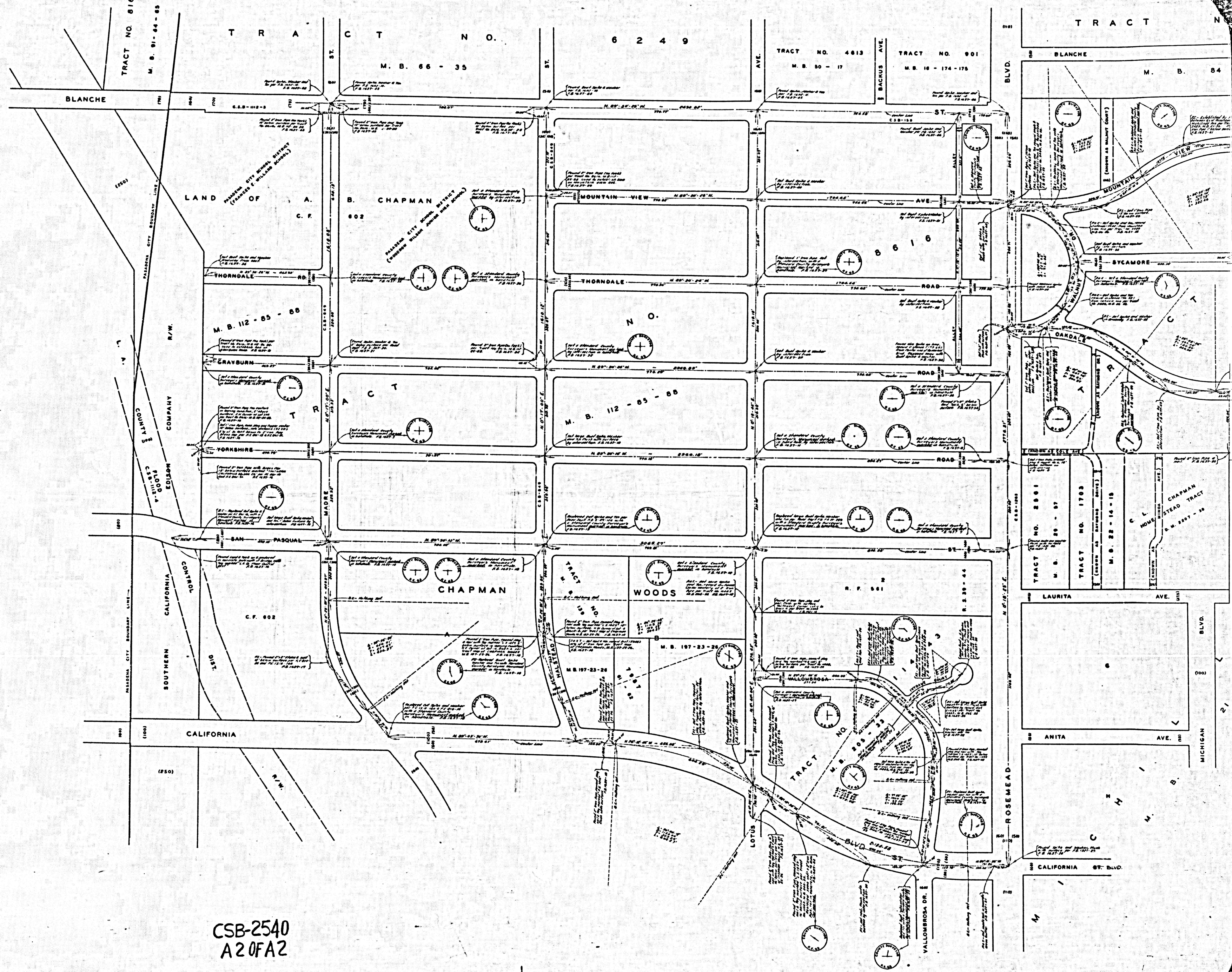
THIS SURVEY MADE TO ESTABLISH CENTER
 LINES ON THE STREETS IN THIS AREA
 PRELIMINARY TO CONSTRUCTION OF SEWERS
 IN THE SANITARY SEWER DISTRICT
 COUNTY IMPROVEMENT NO. 1374 & 1380.

1.M. 44

CSB-2540
 A10FA2

СОСТАВЪ РАБОТЫ № В-52

СОСТАВЪ РАБОТЫ № В-52



TRACT NO. 8166
M. B. 91-64-85

TRACT NO. 6249

TRACT NO. 4613
M. B. 90-17

TRACT NO. 901
M. B. 18-174-175

TRACT N

BLANCHE
M. B. 84

LAND OF A. B. CHAPMAN

M. B. 112-85-88

M. B. 112-85-88

CHAPMAN

WOODS

R. F. 901

M. B. 197-23-26

TRACT NO. 205-23

TRACT NO. 2901
M. B. 29-97

TRACT NO. 1793

M. B. 29-14-15

LAURITA AVE.

ANITA AVE.

CALIFORNIA ST. BLVD.

MICHIGAN BLVD.

CSB-2540
A20FA2