

COUNTY OF LOS ANGELES  
 TOPOGRAPHIC MAP OF  
**DUARTE PARK**  
 BEING  
 A PORTION OF LOT 13-SECTION 30-T.1N.-R.10W. IN THE  
 SUBDIVISION OF THE RANCHO AZUSA DE DUARTE  
 M. R. 6-80-82  
 COUNTY SURVEYORS MAP NO B-2541  
 SCALE - 1 INCH = 40 FT.

JOB NUMBER 0054.27  
 WILLIAM J. FOX - COUNTY SURVEYOR  
 SURVEYED MAY 1954  
 SURVEYED ON REQUEST OF THE  
 SUPERINTENDENT OF PARKS & RECREATION  
 UNDER SEC. 79, ORD. 4099 - BY LETTERS  
 OF MAY 24, 1949 AND NOVEMBER 2, 1953  
 BEARINGS ARE BASED ON THE CALIFORNIA  
 COORDINATE SYSTEM ZONE 7 PER ACT 6351  
 GENERAL LAWS. SEE C.S. 9423  
 PLANE TABLE SHEET G 290-A  
 FIELD WORK BY... W. E. BRADEN  
 OFFICE WORK BY... J. WILLIAMS  
 CHECKED BY... M. D. SULLIVAN  
 DATUM - MEAN SEA LEVEL  
 ELEVATIONS SHOWN HEREON ARE BASED ON THE  
 1929 U.S.C. & G.S. ADJUSTMENT OF B.M. 6443.2670  
 FOR BOUNDARY SURVEY SEE C.S. 9423

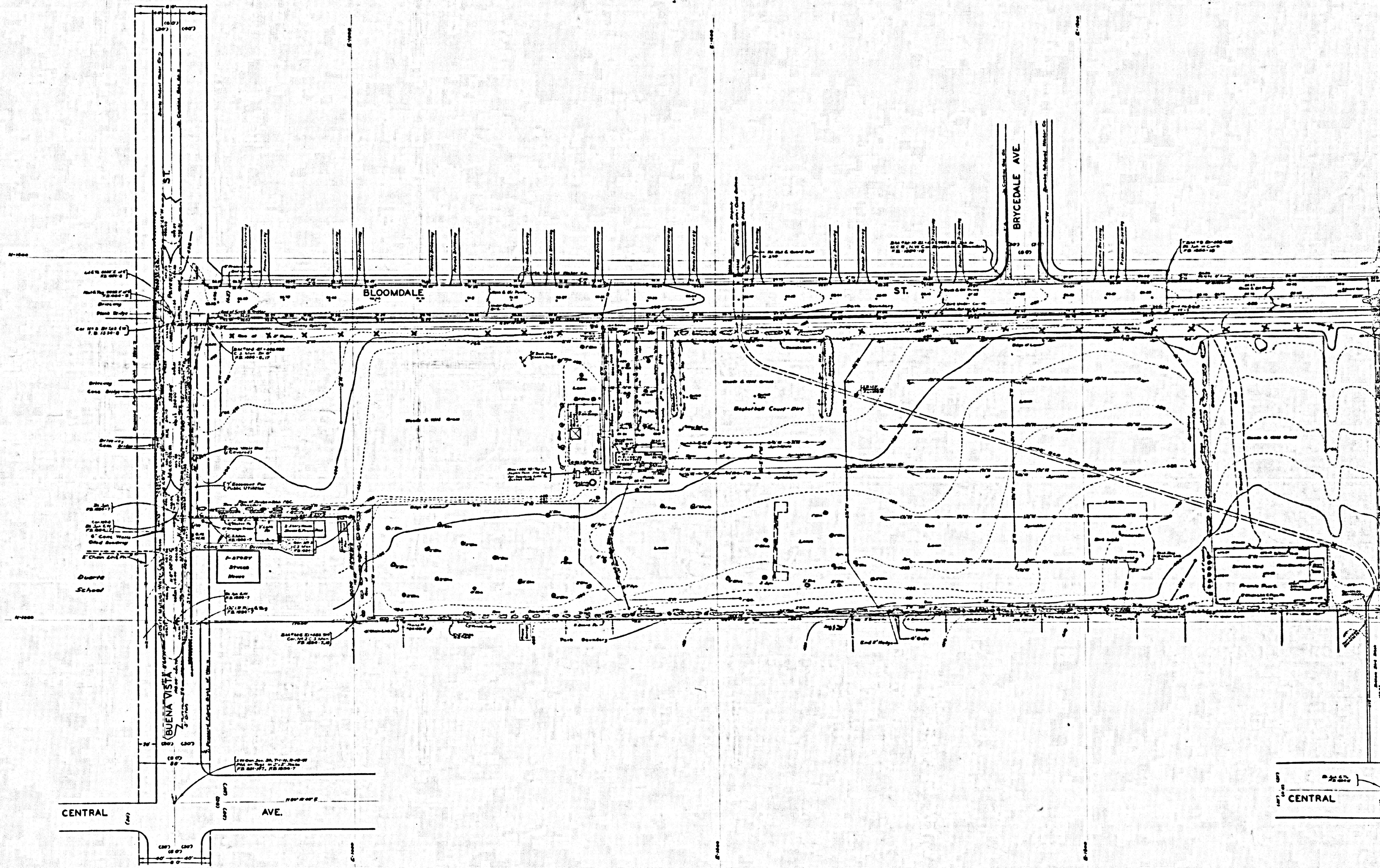
CSB-2541  
 A10FA2

COUNTY SURVEYORS MAP NO B-2541

COUNTY SURVEYORS MAP NO B-2541

1485 - B - 04 9AM 290YV9R2 YTMUC3

CONULY 29R9E9R2 9M9 NO - B - 5341



CSB-2541  
A2 OF A2