

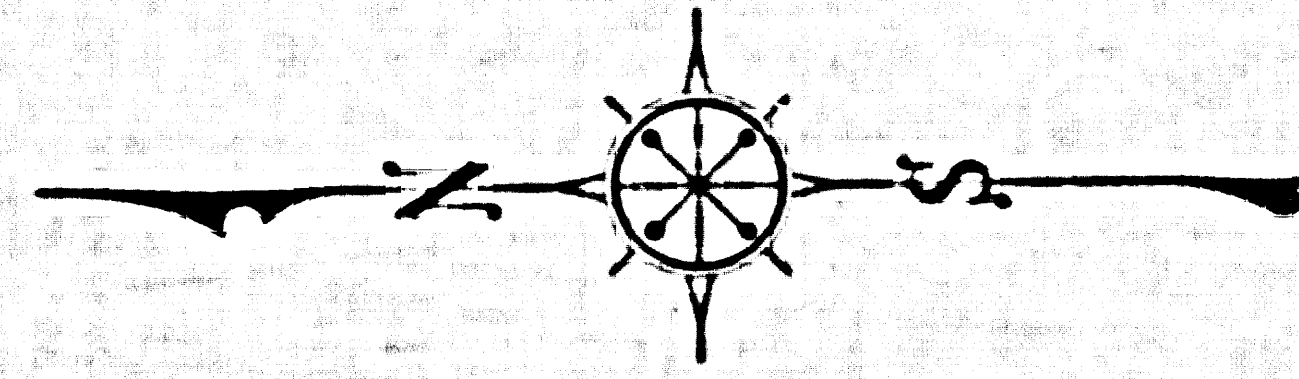
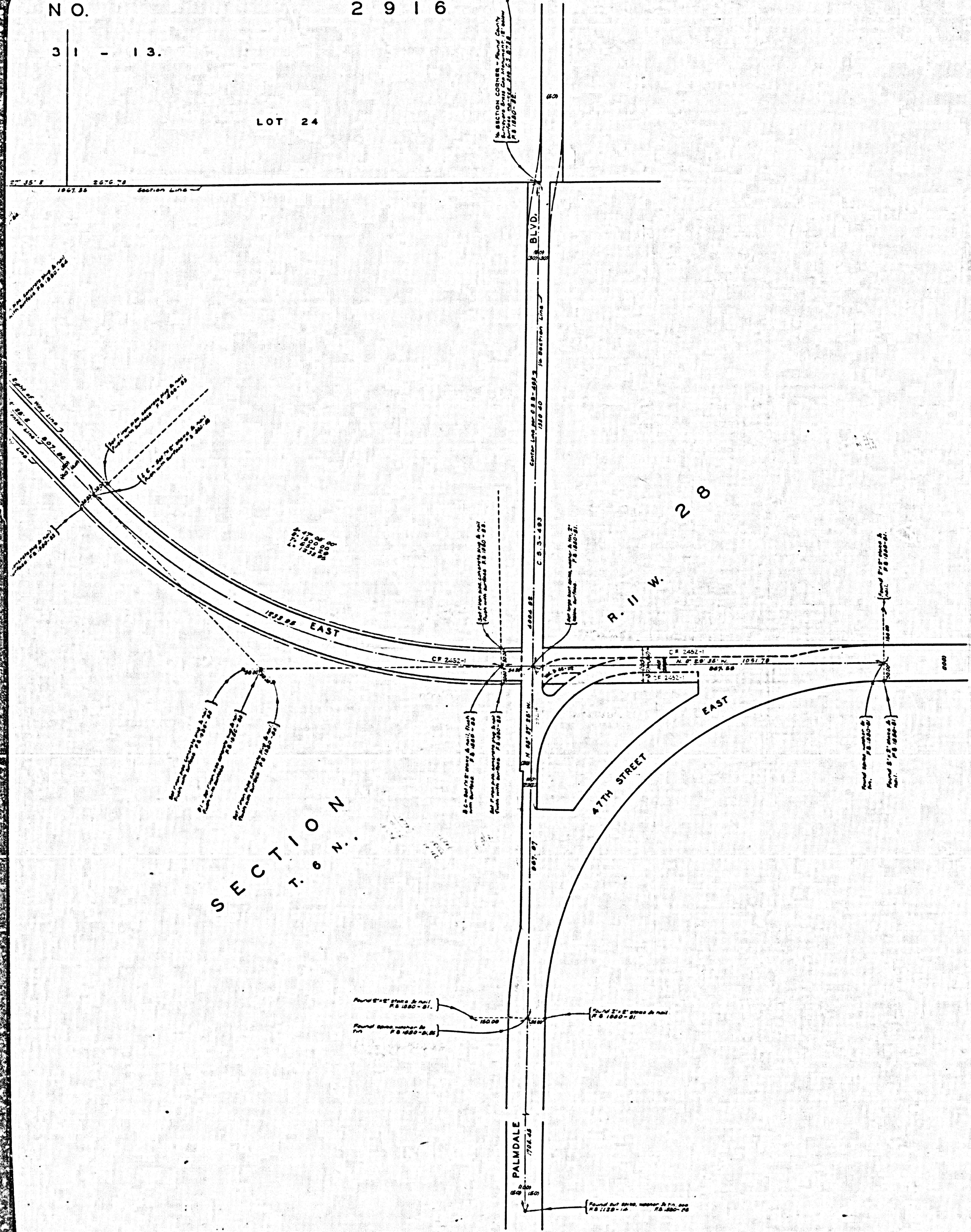
NO.

2916

31 - 13.

LOT 24

SECTION CORNER - Official County
Records - Palmdale, California
C. S. 1880-79-88



COUNTY OF LOS ANGELES
 MAP OF
50 TH. STREET EAST
 FROM
 PALMDALE BOULEVARD
 TO
 AVENUE E

COUNTY SURVEYORS MAP NO. B-2542
 SHEET NO. 1 OF 4 SHEETS
 SCALE: 1 INCH = 100 FT.

JOB NUMBER 0075.00

WILLIAM J. FOX - COUNTY ENGINEER
 SURVEYED JULY 1955

SURVEYED ON REQUEST OF THE REGIONAL
 PLANNING COMMISSION UNDER SEC. 79
 ORD. 4089 BY LETTER DATED APRIL 7, 1955
 AND BY BOARD ORDER DATED DECEMBER 11, 1951

BEARINGS ARE BASED ON THE BEARING OF
 THE EASTERLY LINE OF SECTION 29, T. 6 N.
 R. II W. AS SHOWN ON C. S. 8736.

F. B. 1880-79-88

FIELD WORK BY J. C. PIERCE
 OFFICE WORK BY T. M. ICHTEN
 CHECKED BY H. R. M'PHERSON

1 M. 65

Revised Sept. 1963 U.S.G.

CSB-2542-1
 A10FA2

SHEET NO. 1 OF 4 SHEETS
 COUNTY SURVEYORS MAP NO. B-2542

50TH STREET EAST FROM PALMDALE BOULEVARD TO AVENUE E
 SHEET NO. 1 OF 4 SHEETS

SHEET NO. 1 OF 4 SHEETS
CONVIA SURVEYORS YIUWUC

SHEET NO. 1 OF 4 SHEETS
CONVIA SURVEYORS MAP NO. B-5245

CSB-2542-1
A2 OF A2

TRACT

NO.

2916

M. B. 31 - 13.

LOT 25

LOT 24

TRACT NO. 2821
M. B. 28 - 51.

SECTION CORNER - Round Corner
Surveyors Brass Case Measurement of Brass
Surface marked with C. B. 1880 - 28.
P. 1180 - 180

50TH STREET EAST

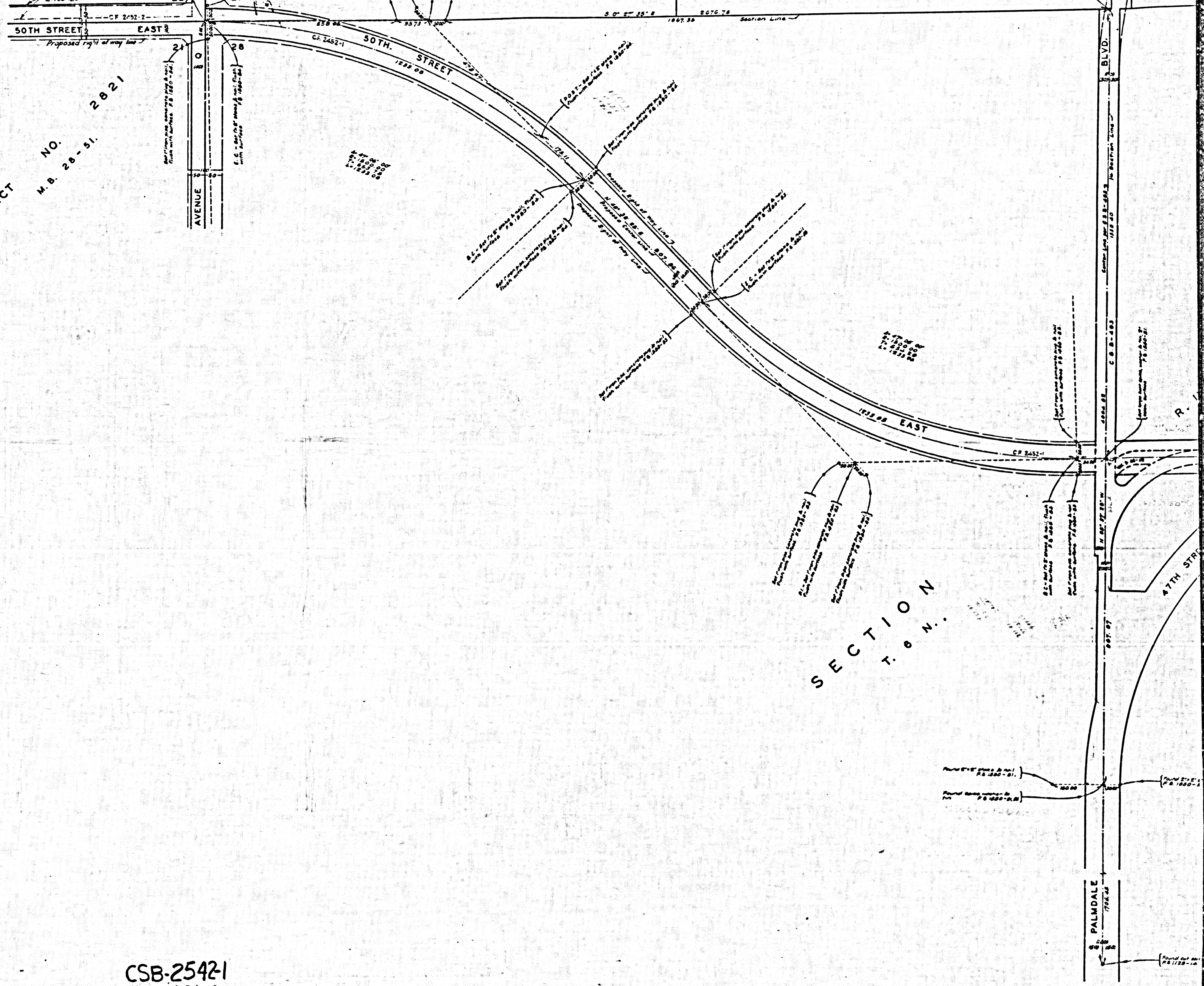
AVENUE

50TH STREET EAST

SECTION T. 10 N.

PALMDALE

4TH STREET



SECTION CORNER - Round Corner
Surveyors Brass Case Measurement of Brass
Surface marked with C. B. 1880 - 28.
P. 1180 - 180