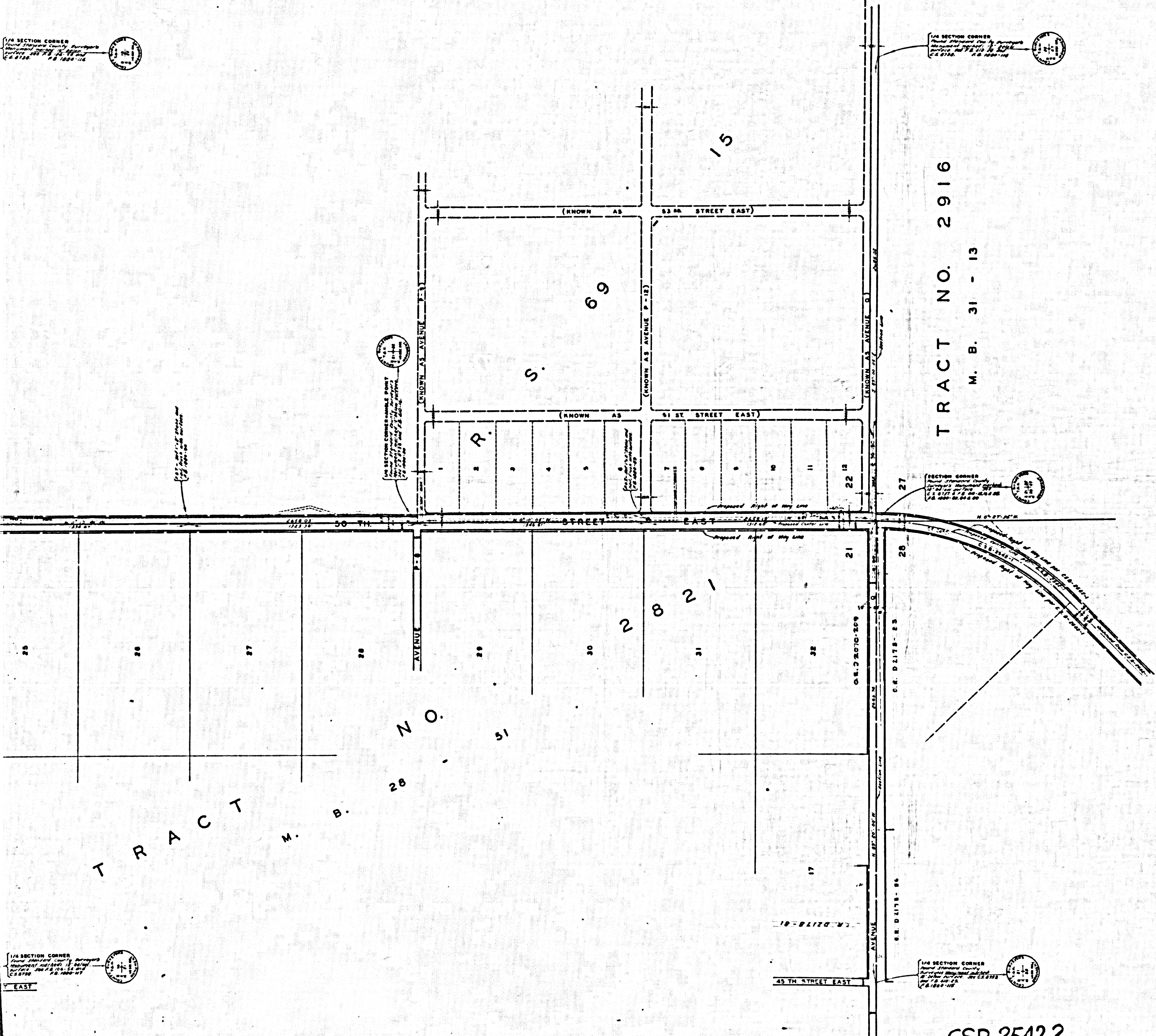
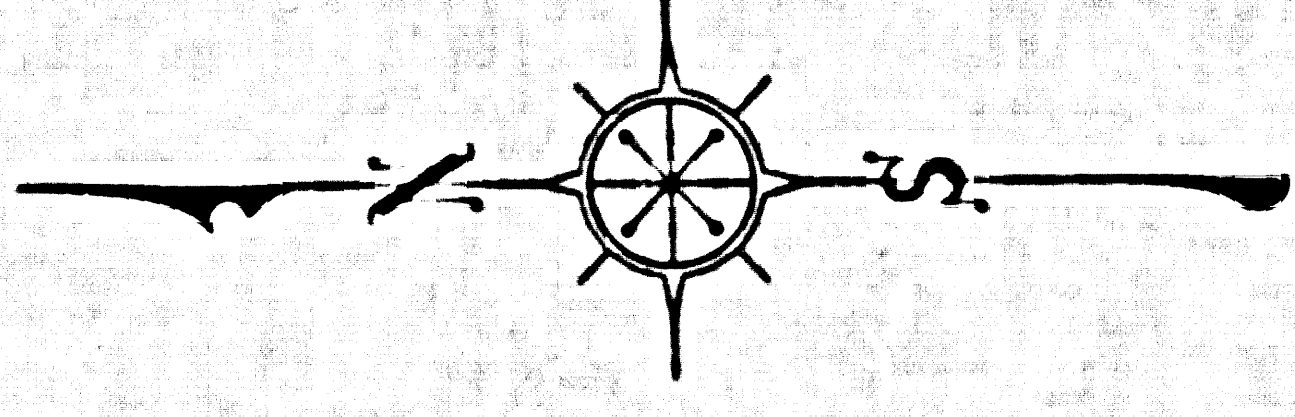


1/4 SECTION CORNER  
Palmdale County Surveyors  
Map No. B-2542  
Sheet No. 2 of 4  
Scale: 1 inch = 200 feet  
1955

1/4 SECTION CORNER  
Palmdale County Surveyors  
Map No. B-2542  
Sheet No. 2 of 4  
Scale: 1 inch = 200 feet  
1955



TRACT NO. 2916  
M. B. 31 - 13



COUNTY OF LOS ANGELES  
MAP OF  
**50 TH. STREET EAST**  
FROM  
**PALMDALE BOULEVARD**  
TO  
**AVENUE E**

COUNTY SURVEYORS MAP NO. B-2542  
SHEET NO. 2 OF 4 SHEETS  
SCALE: 1 INCH = 200 FT.

JOB NUMBER 0075 00  
JOHN A. LAMBIE - COUNTY ENGINEER  
SURVEYED SEPT-DEC. 1955  
SURVEYED ON REQUEST OF THE REGIONAL  
PLANNING COMMISSION UNDER SEC. 79  
ORD. 4099 BY LETTER DATED APRIL 7, 1955  
AND BY BOARD ORDER DATED DECEMBER 11, 1954  
BEARINGS ARE BASED ON THE BEARING OF  
THE EASTERLY LINE OF SECTION 28, T. 6 N.  
R. 11 W. AS SHOWN ON C. S. 873 B.  
P. S. 1880-87-182  
FIELD WORK BY J. C. PIERCE  
OFFICE WORK BY G. D. BAILEY  
CHECKED BY R. A. McPHERSON  
S. H. MILLER  
Revised Sept. 1962... J. J. Edwards

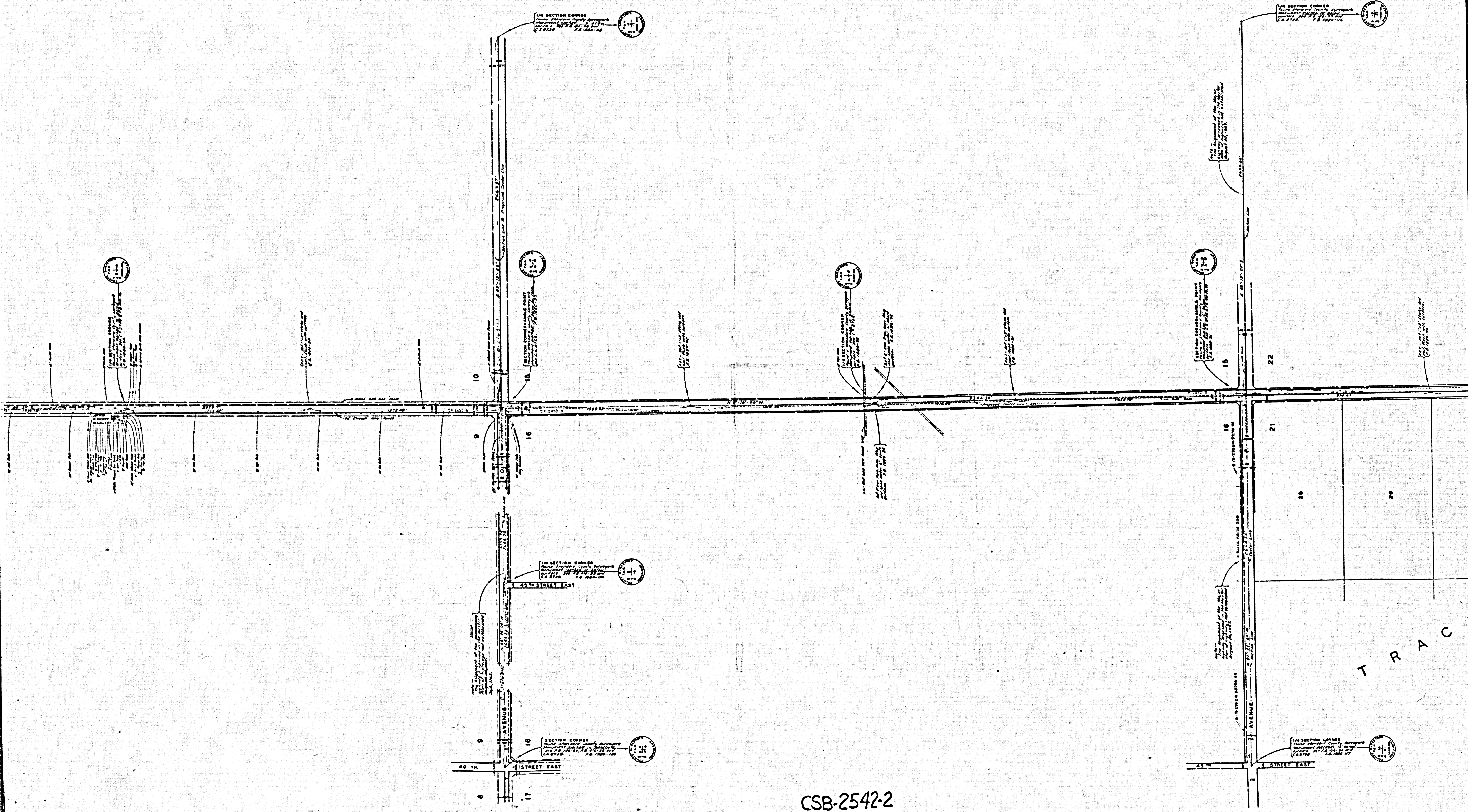
INDEX 65

1/4 SECTION CORNER  
Palmdale County Surveyors  
Map No. B-2542  
Sheet No. 2 of 4  
Scale: 1 inch = 200 feet  
1955

1/4 SECTION CORNER  
Palmdale County Surveyors  
Map No. B-2542  
Sheet No. 2 of 4  
Scale: 1 inch = 200 feet  
1955

CSB-2542-2  
A1 OF A3

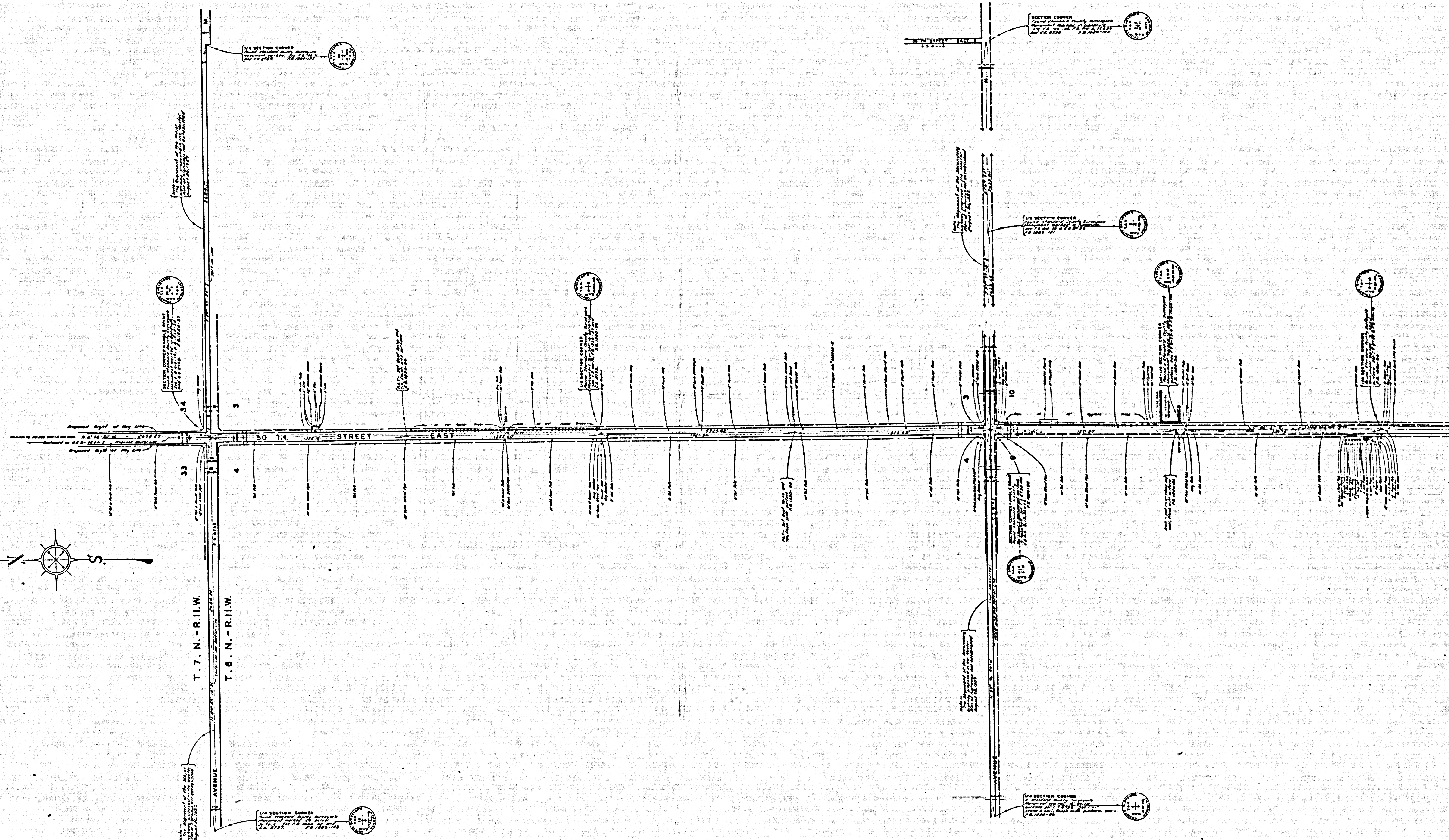
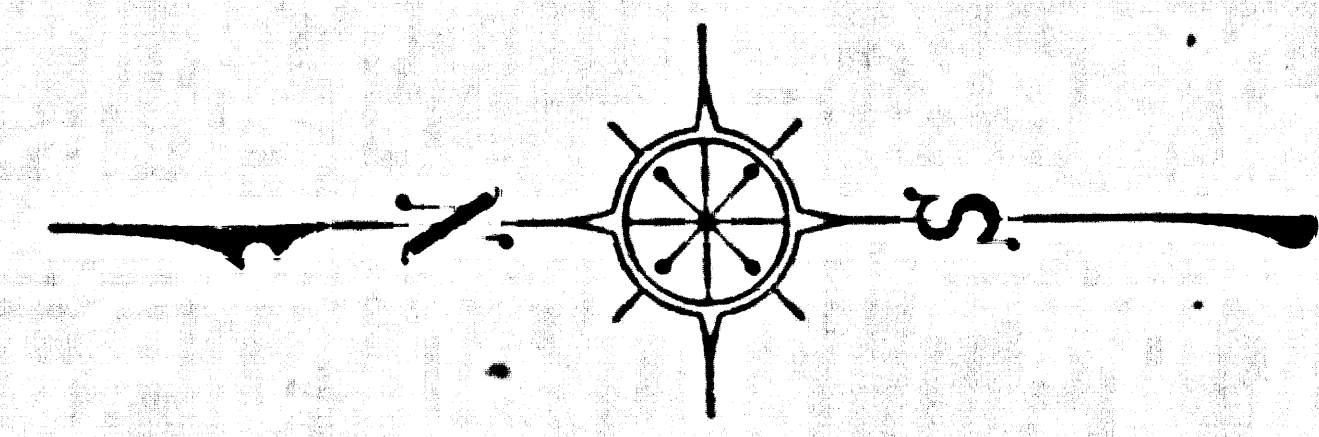




CSB-2542-2  
A20FA3

T  
R  
A  
C  
K





CSB-2542-2  
A30FA 3