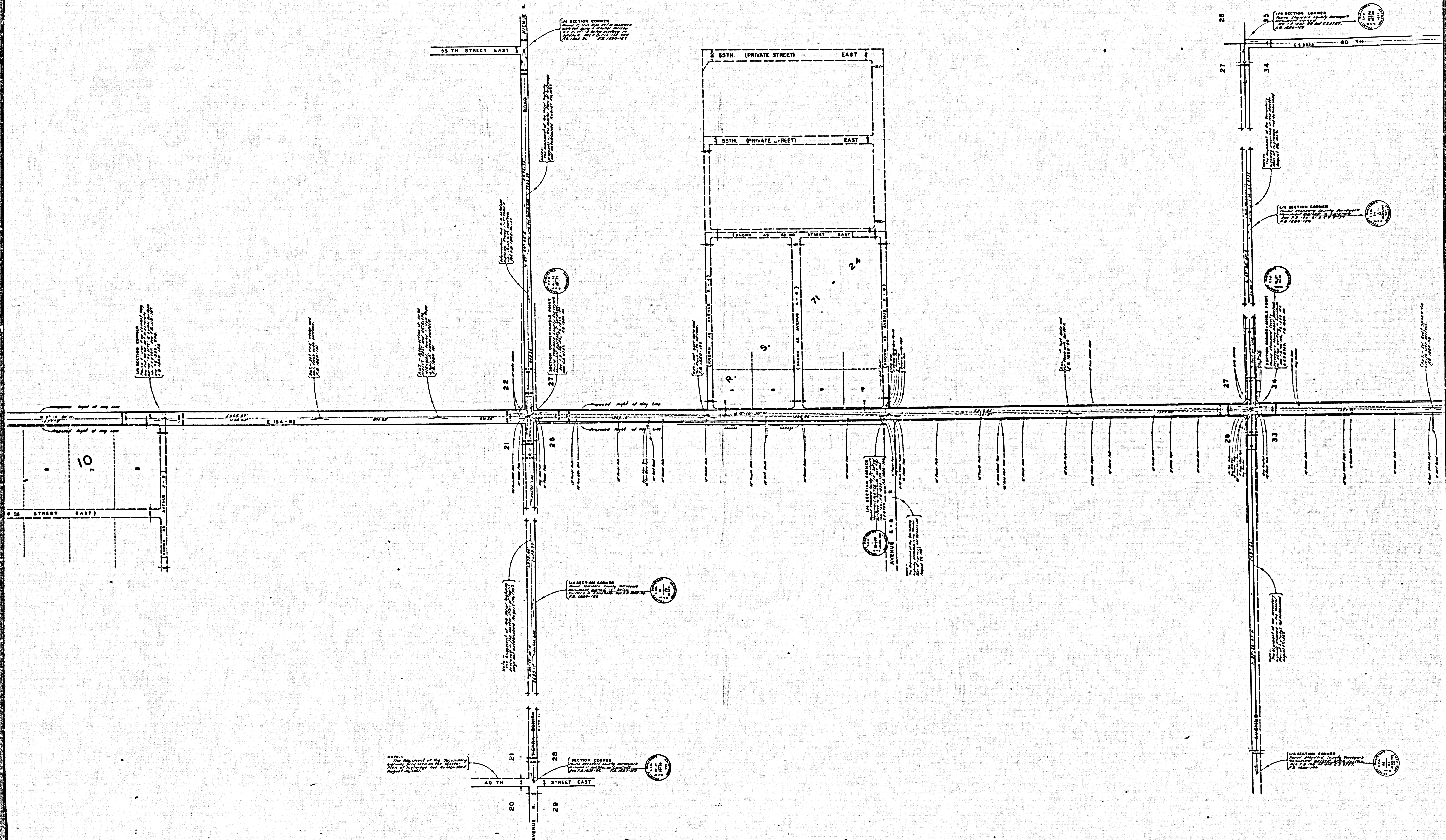


COUNTY OF LOS ANGELES
 MAP OF
50 TH. STREET EAST
 FROM
PALMDALE BOULEVARD
 TO
AVENUE E
 COUNTY SURVEYORS MAP NO. B-2542
 SHEET NO. 3 OF 4 SHEETS
 SCALE: 1 INCH = 200 FT.

JOB NUMBER 0075.00
 JOHN A. LAMBIE - COUNTY ENGINEER
 SURVEYED SEPT. - DEC. 1955
 SURVEYED ON REQUEST OF THE REGIONAL
 PLANNING COMMISSION UNDER SEC. 79
 ORD. 4099 BY LETTER DATED APRIL 7, 1955
 AND BY BOARD ORDER DATED DECEMBER 11, 1954
 BEARINGS ARE BASED ON THE BEARING OF
 THE EASTERLY LINE OF SECTION 20, T. 6. N.
 R. 11. W. AS SHOWN ON C. S. 8736.
 F. B. 1880-87-182
 FIELD WORK BY..... J. C. PIERCE
 OFFICE WORK BY..... G. D. BAILEY
 CHECKED BY..... K. R. M'PHERSON
 S. H. MILLER
 Revised Sept. 1963..... d. J. E.

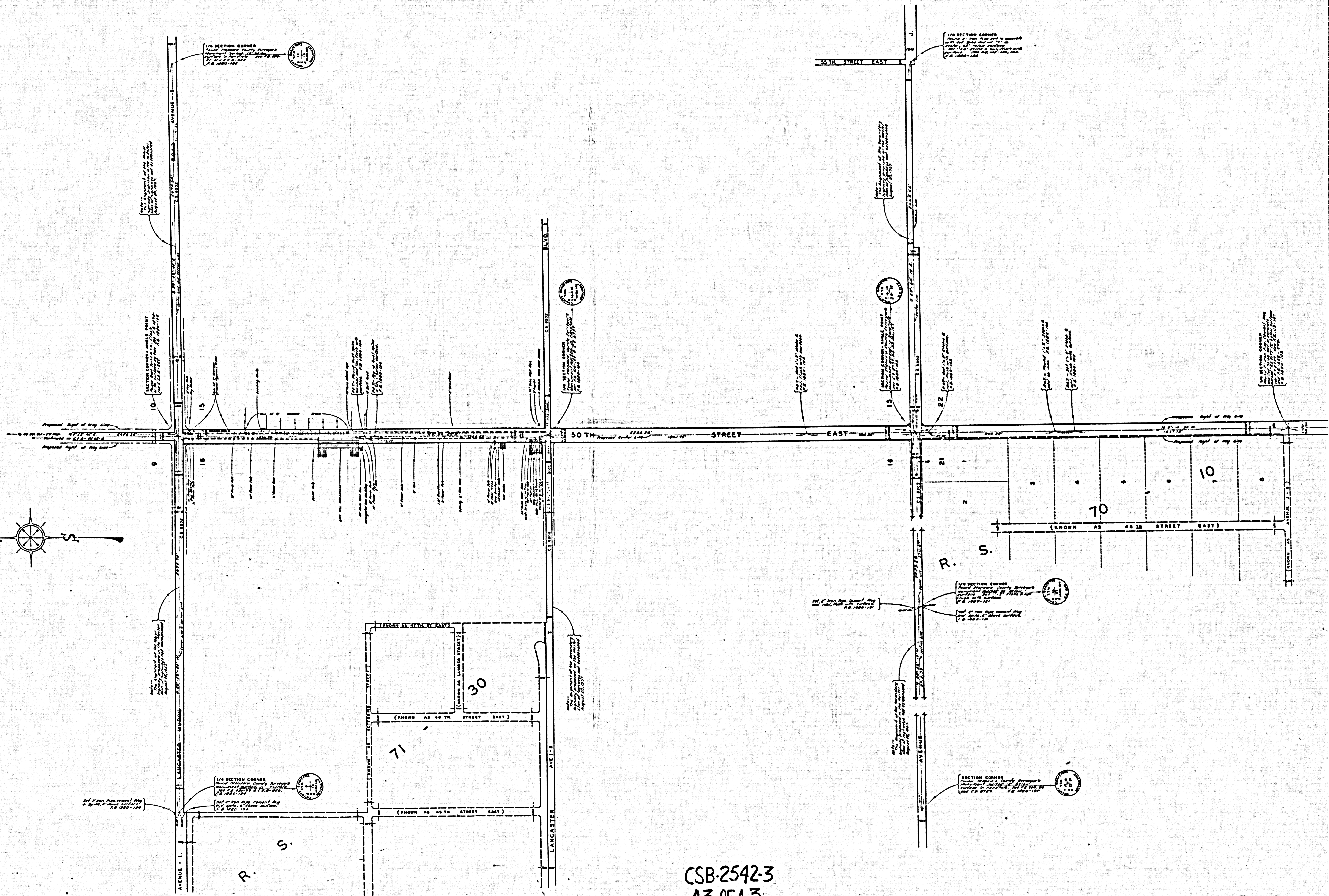
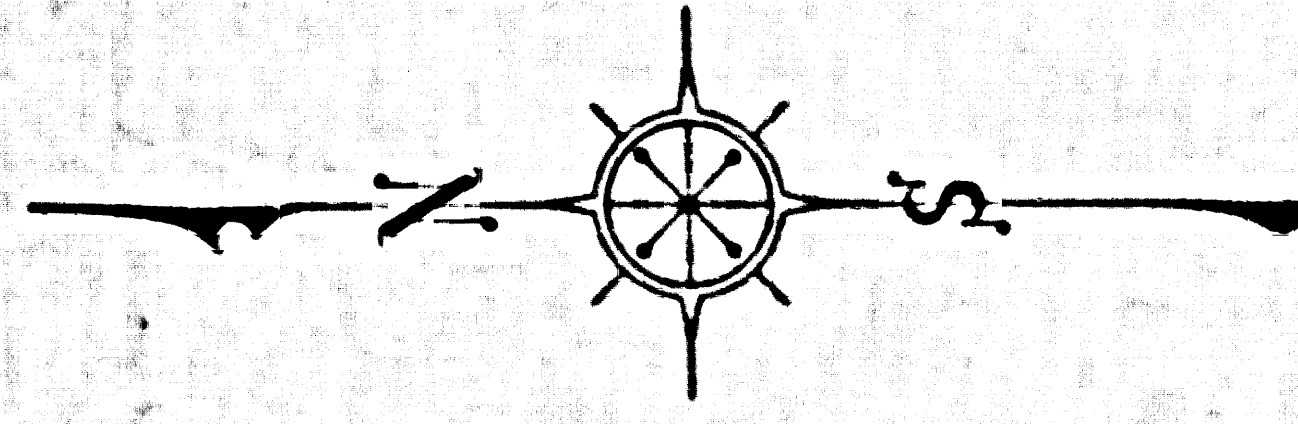
INDEX 70

CSB-2542-3
 A1 OF A 3



Note: The alignment of the Secondary Highway, Highway No. 10, is shown by the dashed line on the plan and was established August 20, 1927.

CSB-2542-3
A20FA3



CSB-2542-3
A3 OF A 3