

COUNTY OF LOS ANGELES  
 MAP OF  
**LOS ANGELES CO. FIRE STATION NO. 37**  
 CONSOLIDATED IN THE PALMDALE FIRE PROTECTION DISTRICT  
 BEING A PORTION OF LOTS 1 & 2, BLOCK D,  
 TRACT NO. 2258 M.B. 23-74.  
 COUNTY SURVEYORS MAP NO. B-2543  
 SCALE: 1 INCH = 40 FT.

JOB NUMBER 0801.45  
 WILLIAM J. FOX - COUNTY ENGINEER  
 SURVEYED JULY 1955  
 SURVEYED ON REQUEST OF THE CHIEF ENGINEER,  
 COUNTY FIRE PROTECTION DISTRICTS, UNDER  
 SEC. 79 ORD. 4099 BY LETTER DATED JULY 12, 1955  
 BEARINGS ARE BASED ON THE BEARING OF  
 10TH STREET EAST AS SHOWN C.S. 6757.  
 F.B. 1620-325-236  
 FIELD WORK BY ..... R. L. WILLEY  
 OFFICE WORK BY ..... T. M. ICHIEN  
 CHECKED BY ..... C. J. GALLI

I.M. 65

CSB-2543  
 A1 OF A 2

CONSULT SURVEYORS MAP NO. B-5243

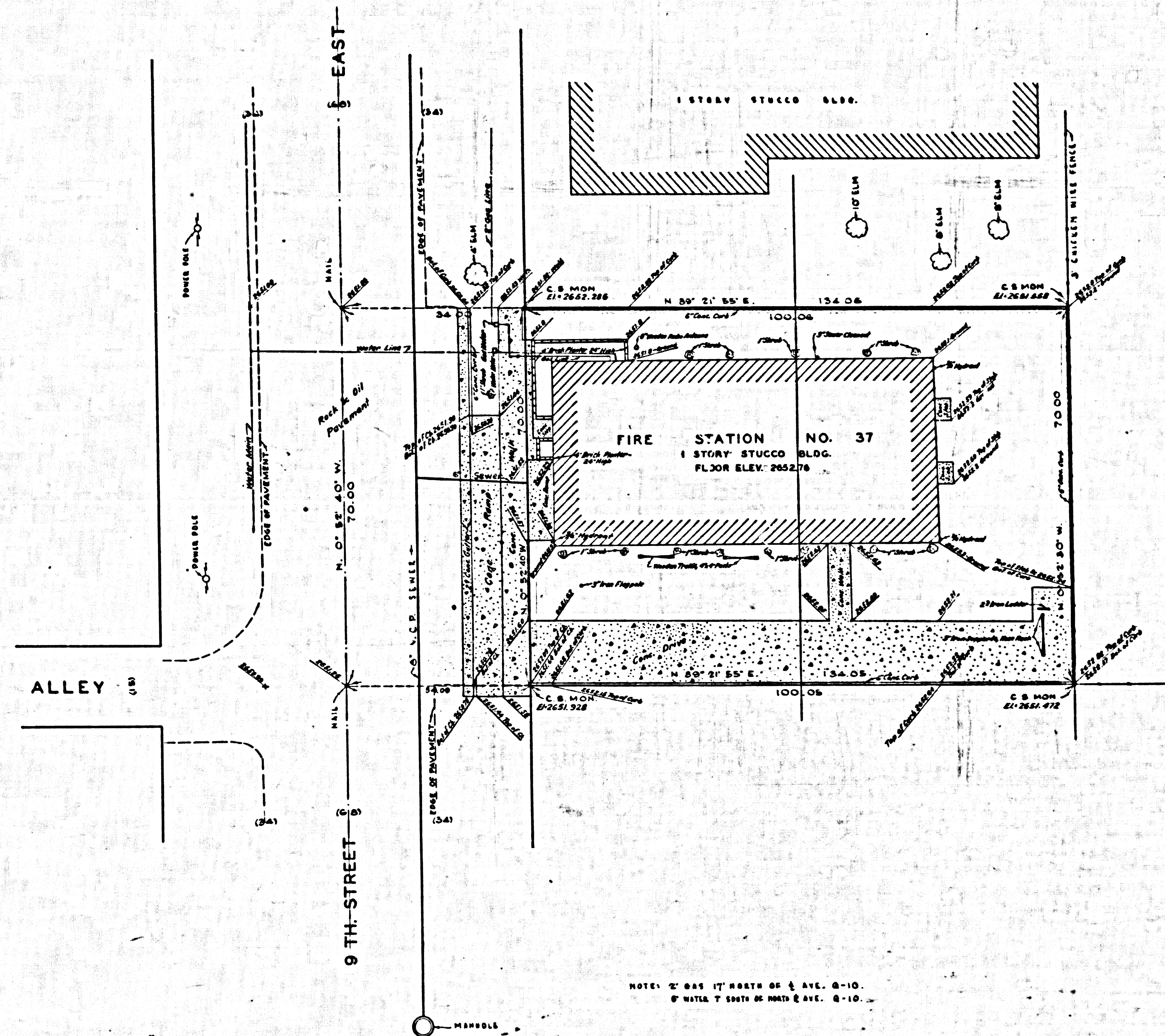
CONSULT SURVEYORS MAP NO. B-5243



CONTRACT SURVEY NO. B-3243

CONTRACT SURVEY NO. B-3243

NOTE: 2' GAS 24' NORTH OF 1/2 AVE. G-9.  
6' WATER T. NORTH OF SOUTH 1/2 AVE. G-9



NOTE: 2' GAS 17' NORTH OF 1/2 AVE. G-10.  
6' WATER T. SOUTH OF NORTH 1/2 AVE. G-10.

MARGINAL MAP  
SHOWING  
TOPOGRAPHY

SCALE - 1 INCH = 10 FEET

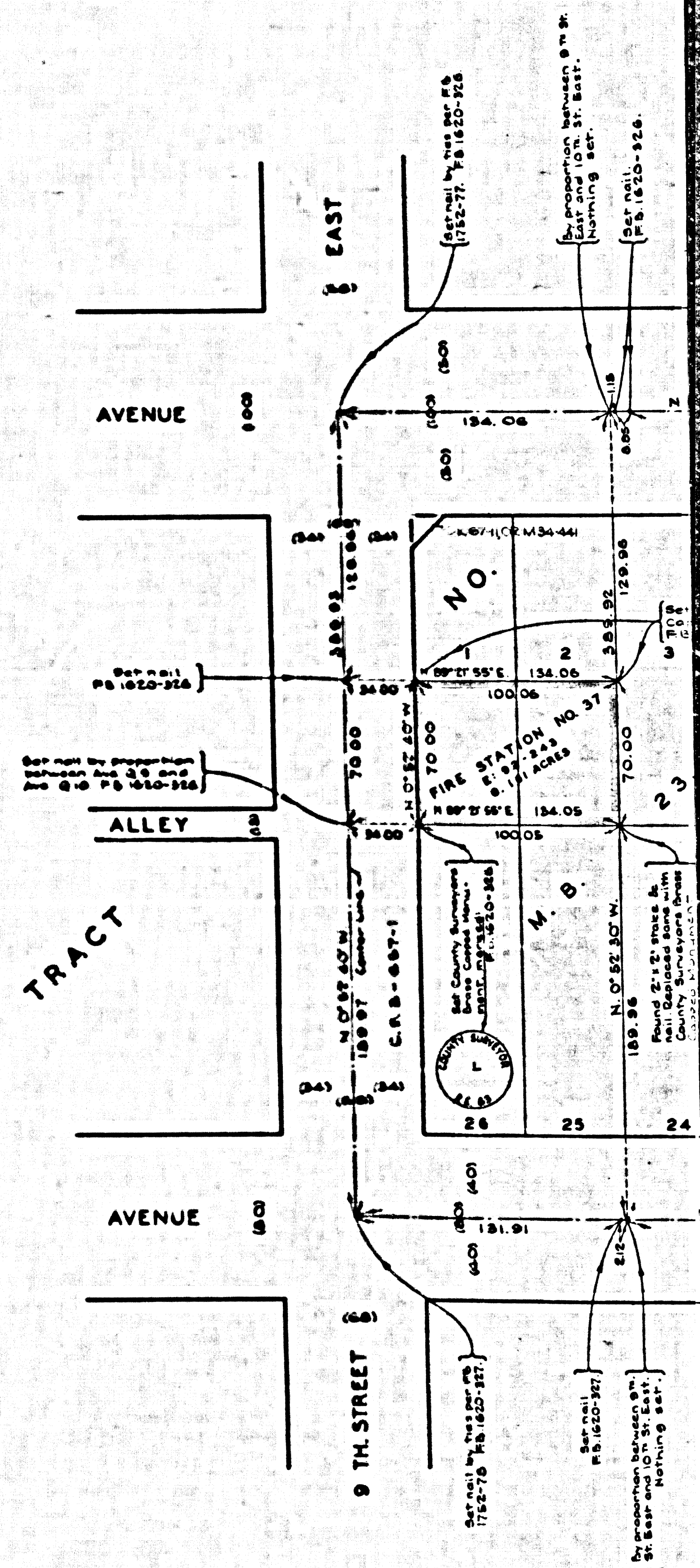
FIELD WORK BY R. L. WILLEY  
OFFICE WORK BY T. M. ICHIEI  
CHECKED BY C. J. GALLI

F.B. 1620-329-336

DATUM - MEAN SEA LEVEL

ELEVATIONS SHOWN HEREON ARE BASED ON  
THE 1928 ADJUSTMENT OF U.S.C. & G.S.  
S.M. 2-425 (S. 2, 2002)

Topography Added - 11-27-56 R. L. GROSS



CSB-2543  
A20FA2