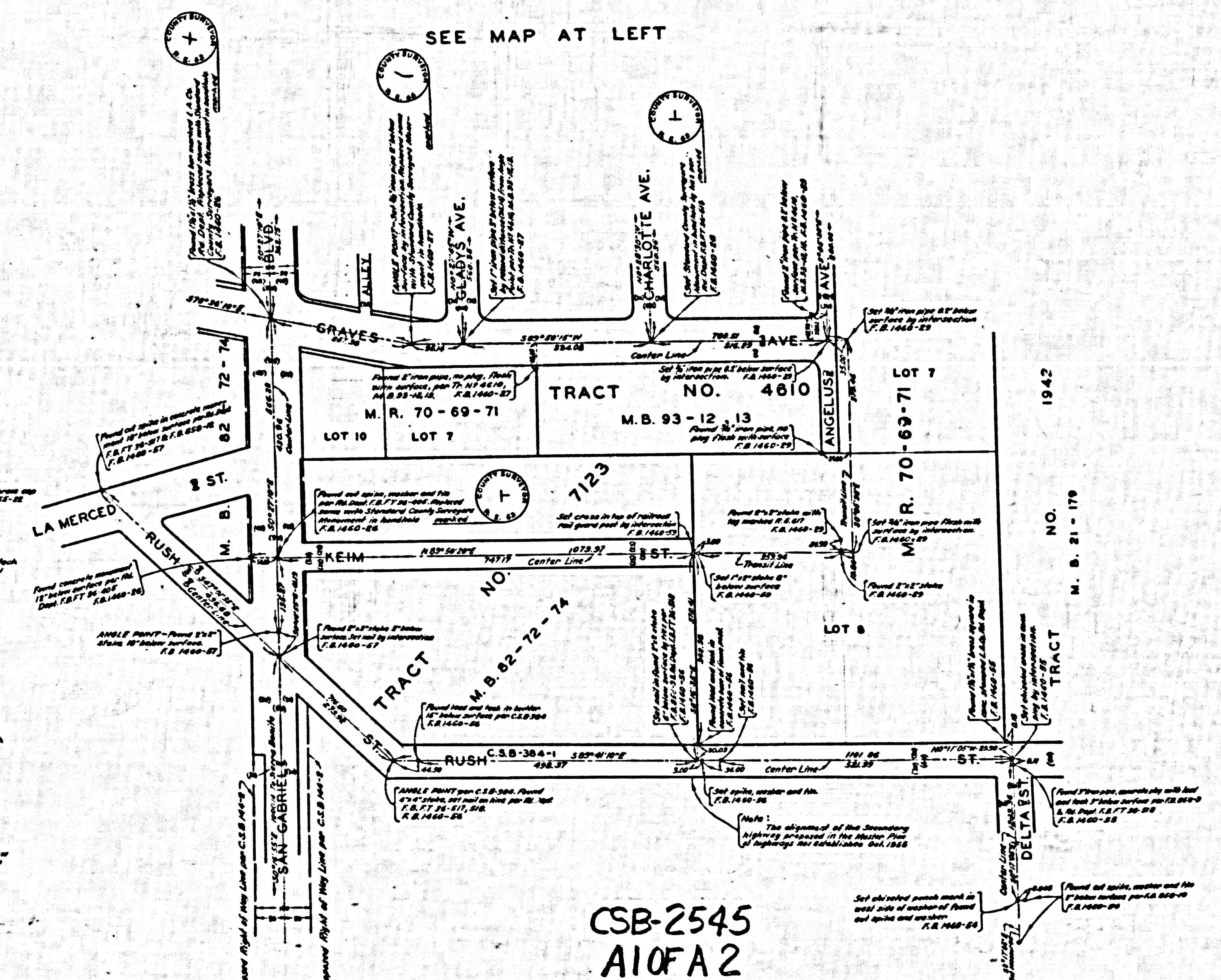
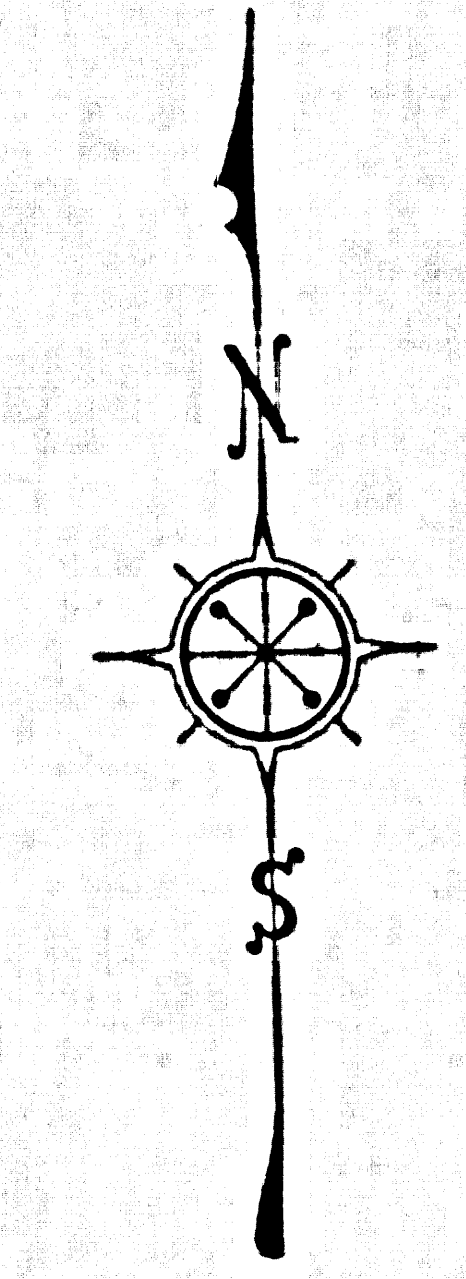


SEE MAP AT RIGHT



CSB-2545  
A10FA2



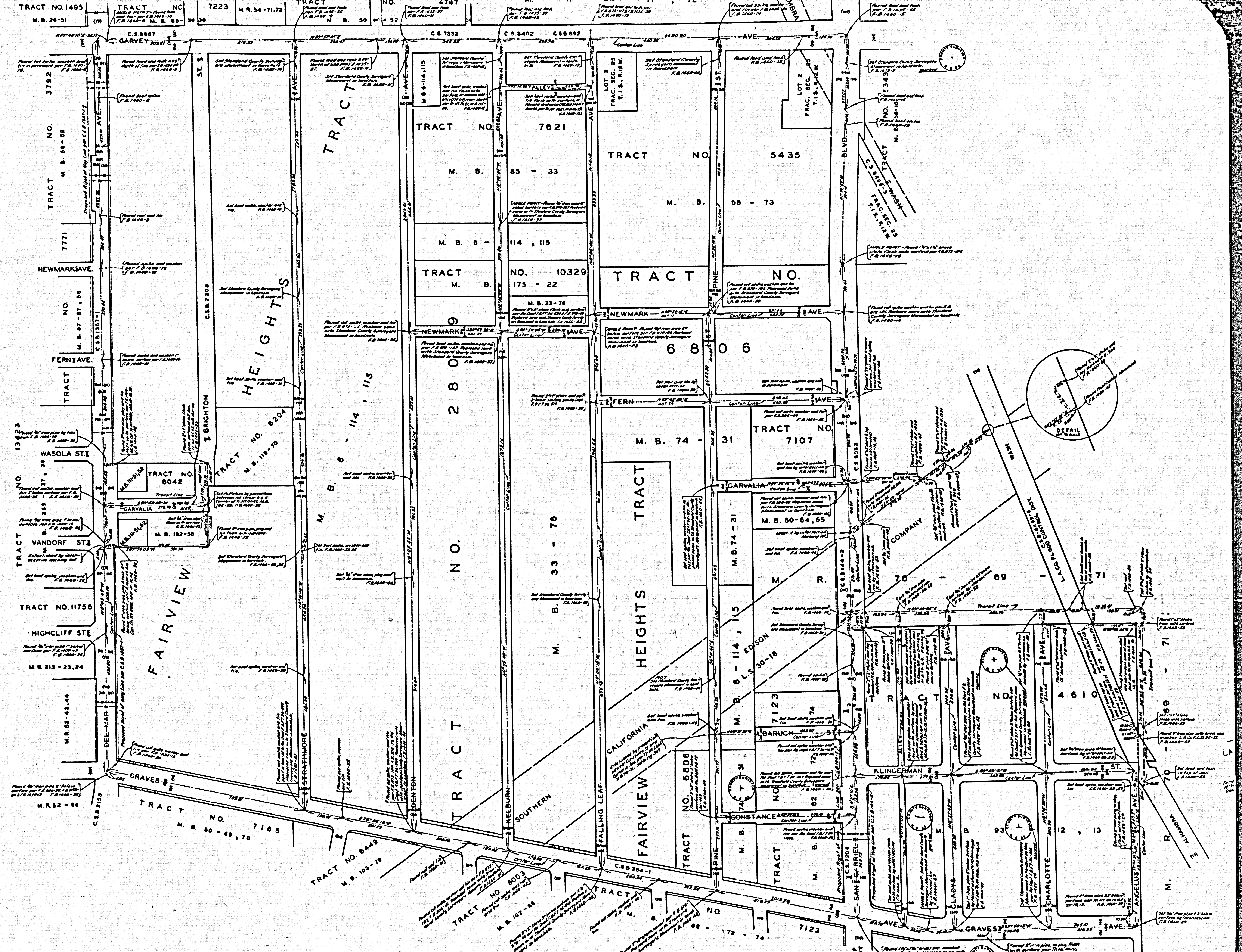
COUNTY OF LOS ANGELES  
MAP OF  
STREETS IN THE GARVALIA AVENUE  
AND A PORTION OF FERN AVENUE  
SANITARY SEWER DISTRICTS

COUNTY SURVEYORS MAP NO. B-2545  
SCALE: 1 INCH = 100 FT.

JOB NUMBER 0302.00  
JOHN A. LAMBIE-COUNTY SURVEYOR  
SURVEYED-1948-1952  
SURVEYED ON REQUEST OF THE COUNTY ENGINEER UNDER AUTHORITY OF THE BOARD OF SUPERVISORS BY ORDER DATED FEB. 26, 1948.  
BEARINGS ARE BASED ON THE BEARING OF DEL MAR AVE. AS SHOWN ON C.S.B. 1357-1  
F.B. 1480-5-286  
FIELD WORK BY S.E. BUTLER  
OFFICE WORK BY H.E. GRANQUIST  
CHECKED BY R.L. GREEN  
C.J. GALLI  
INDEX 36

THIS SURVEY MADE TO ESTABLISH CENTER LINES ON THE STREETS IN THIS AREA PRELIMINARY TO CONSTRUCTION OF SEWERS IN THE GARVALIA AVE. AND A PORTION OF FERN AVE. SANITARY SEWER DISTRICTS (C.L. 1257 & C.L. 1269)

NOTE: ALL STANDARD COUNTY SURVEYORS MONUMENTS ARE 2" IRON PIPES SET IN CONCRETE WITH BRASS CAP MARKED UNLESS OTHERWISE SHOWN



CSB 2545  
A20FA2

SEE MAP AT RIGHT

