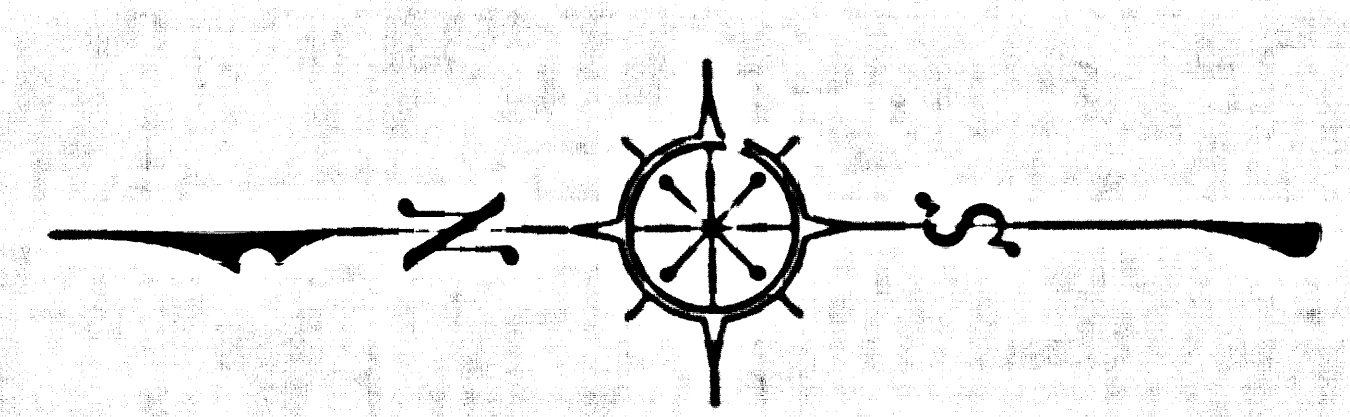


Handwritten notes:
 All work done
 on the new map
 is correct
 and the old map
 is to be discarded
 by the City of Los Angeles

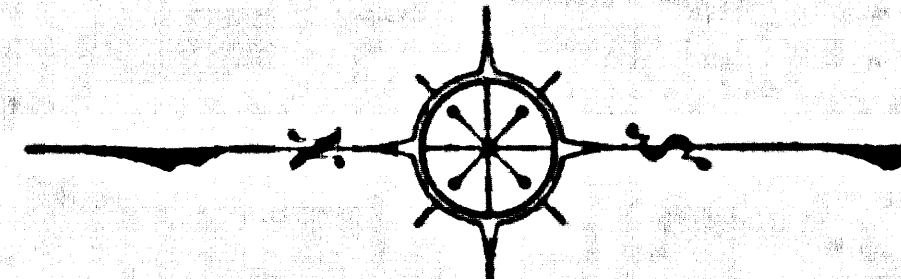
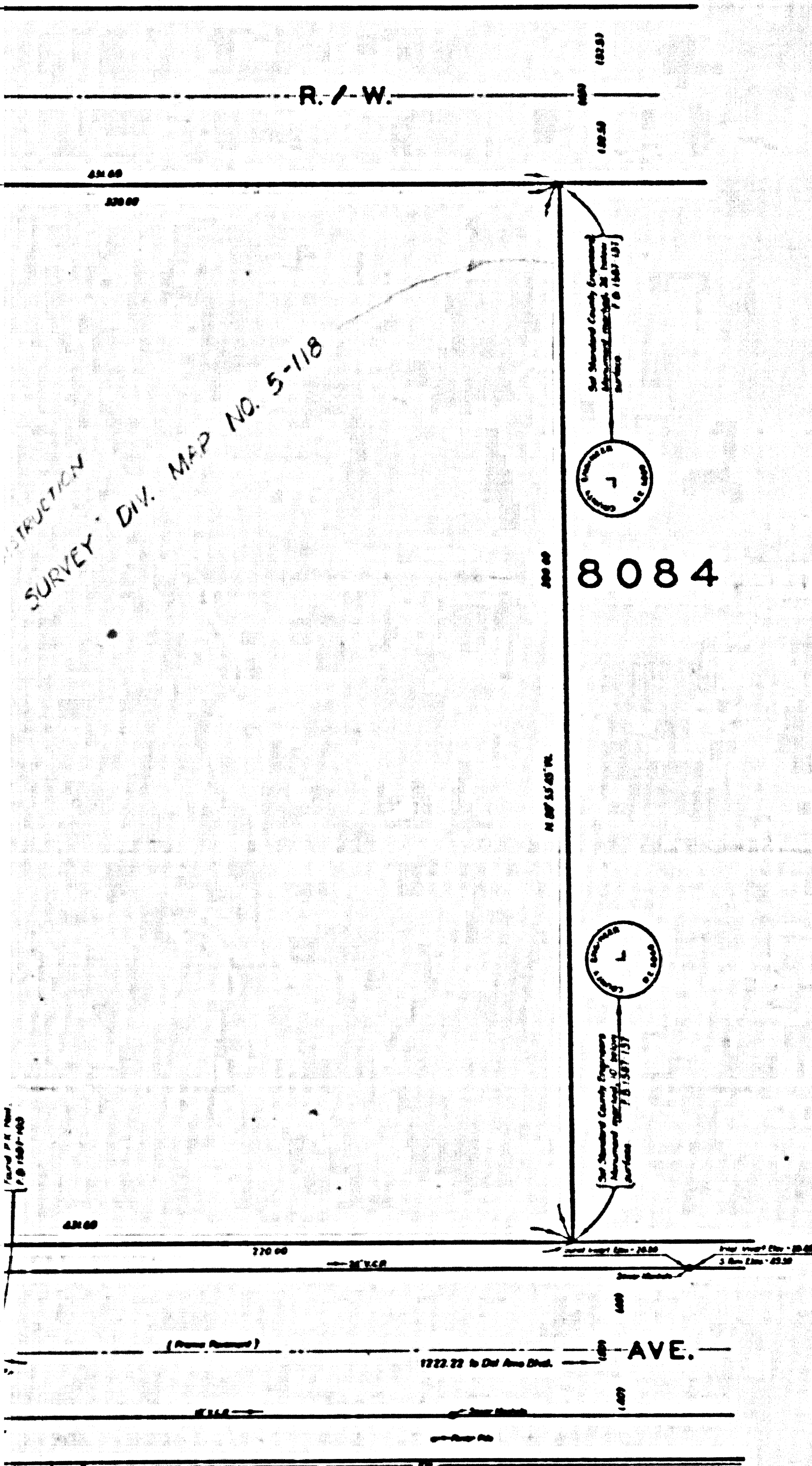


COUNTY OF LOS ANGELES
 MAP OF
LAKEWOOD CIVIC CENTER
 A PORTION OF
 LOT 18 TRACT NO. 8084
 M.B. 171-24-30
 COUNTY SURVEYORS MAP NO. B-2546
 SCALE: 1 INCH = 50 FT.

JOB NUMBER 0021.42
 JOB NUMBER 0002.13
JOHN A. LANSIE - COUNTY ENGINEER
 SURVEYED AUGUST, 1955
 SURVEYED ON REQUEST OF THE CHIEF
 ADMINISTRATIVE OFFICER UNDER SEC. 79,
 ORD. 4098 BY LETTER DATED AUGUST 3, 1955.
 BEARINGS ARE BASED ON THE CALIFORNIA
 COORDINATE SYSTEM ZONE 2 PER ACT 8351
 GENERAL LAWS. SEE C.S. 9423
 F. B. 1587-101-137
 FIELD WORK BY D. SAPPPELL
 OFFICE WORK BY S. SHINODA
 CHECKED BY H. R. M'PHERSON
 J.M. 31
 Revised July, 1957 - 25
 Revised Nov. 1963 - 44.C.

CSB-2546
 A1 OF A3

16215



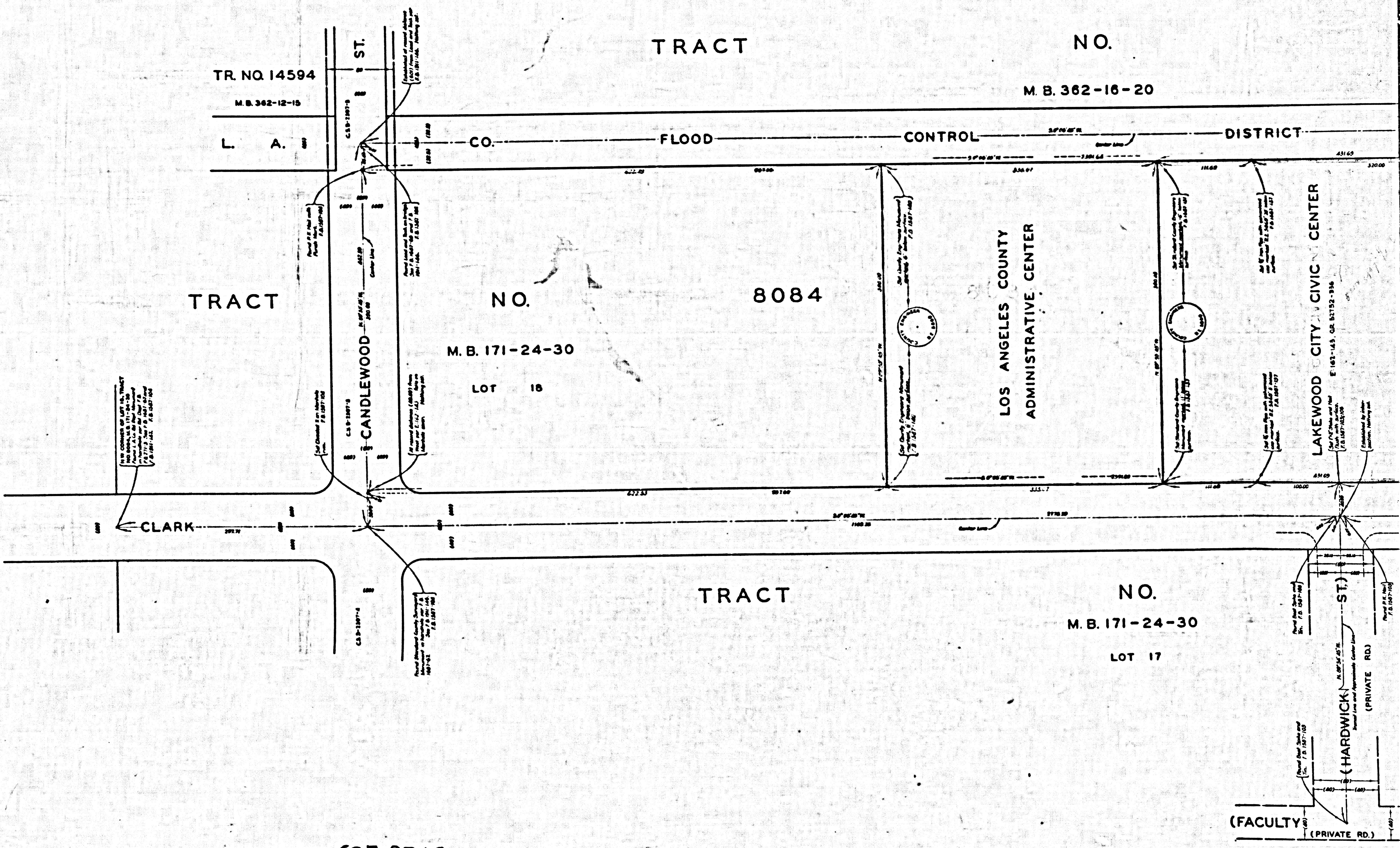
MARGINAL MAP
SHOWING
TOPOGRAPHY
SCALE 1 INCH = 30 FT.
FIELD WORK BY G. SAPPPELL
OFFICE WORK BY S. SHINODA
CHECKED BY K. R. M'PHERSON
F. B. 1567-107-135

DATUM - MEAN SEA LEVEL
ELEVATIONS SHOWN HEREON ARE BASED UPON THE
LOS ANGELES COUNTY PRECISE LEVEL NET ADJUST-
MENT OF 1952. LINE 32 B.M. '32-6 AND B.M. '32-7
Revised July, 1957-52

TRACT NO. M. B. 362-16-20
L. A. CO. FLOOD CONTROL DISTRICT

TRACT NO. 8084
M. B. 171-24-30
LOT 16

TRACT NO. M. B. 171-24-30
LOT 17



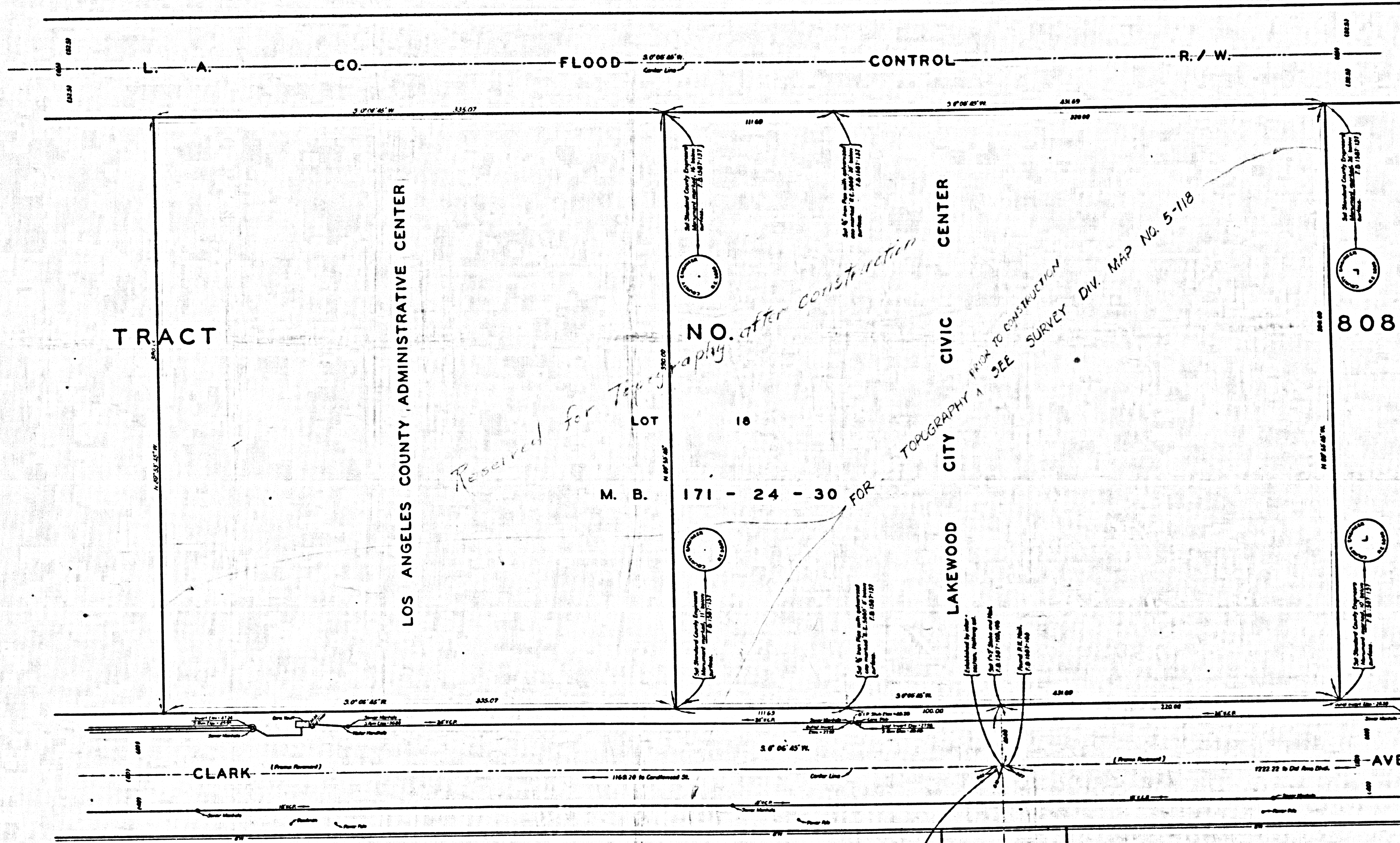
CONSULT SURVEYOR'S RECORDS

TRACT

NO.

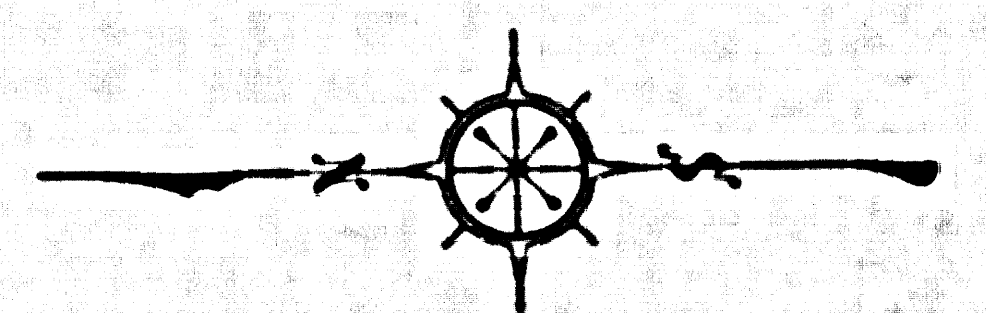
16215

M. B. 362-16-20



Reserved for Topog. apply after construction

FROM TO CONSTRUCTION SEE SURVEY DIV. MAP NO. 5-118



MARGINAL MAP
SHOWING
TOPOGRAPHY
SCALE: 1 INCH = 30 FT.
FIELD WORK BY: D. SAPPPELL
OFFICE WORK BY: S. SHINODA
CHECKED BY: R. R. McPHERSON
F. B. 1587-107-135

DATUM - MEAN SEA LEVEL
ELEVATIONS SHOWN HEREIN ARE BASED UPON THE
LOS ANGELES COUNTY PRECISE LEVEL NET ADJUST-
MENT OF 1952. LINE 22 S. M. 32-6 AND S. M. 32-1.
Revised July, 1957 - 32

HARDWICK ST.
(PRIVATE RD.)

CSB-2546
A3 OF A3

CONSULT SURVEYOR'S RECORDS