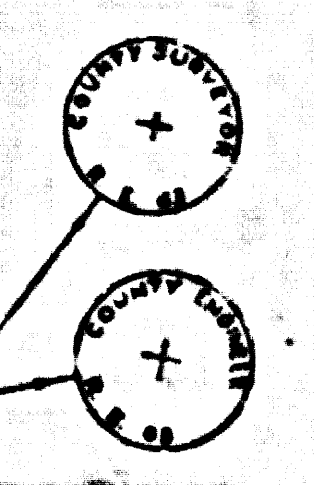


COUNTY OF LOS ANGELES
 MAP OF
**STREETS IN THE GARIBALDI AVENUE
 KAUFFMAN AVENUE AND EMPEROR
 AVENUE SANITARY SEWER DISTRICTS**
 COUNTY SURVEYORS MAP NO. B-2547
 SCALE-1 INCH=100 FT.

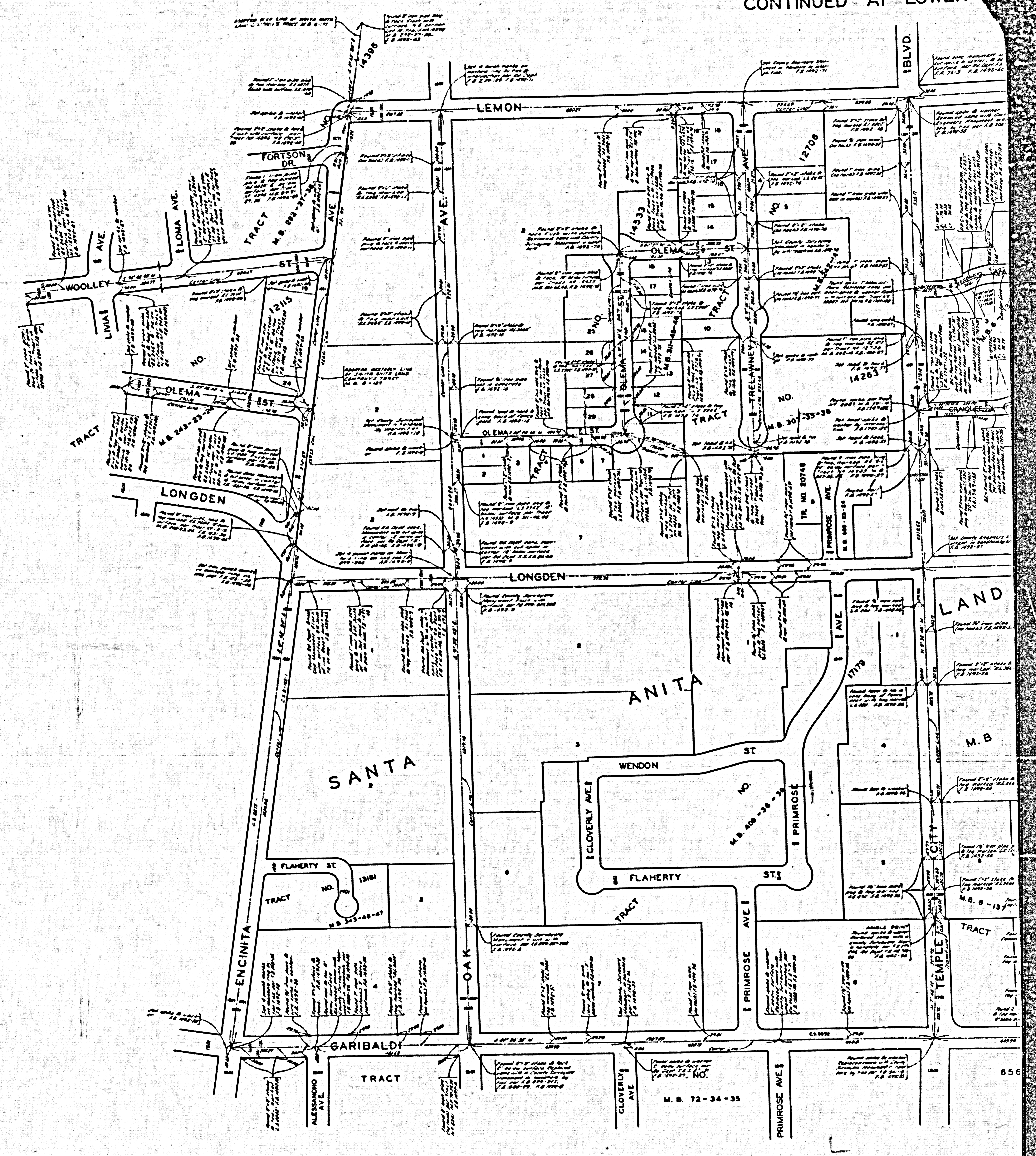
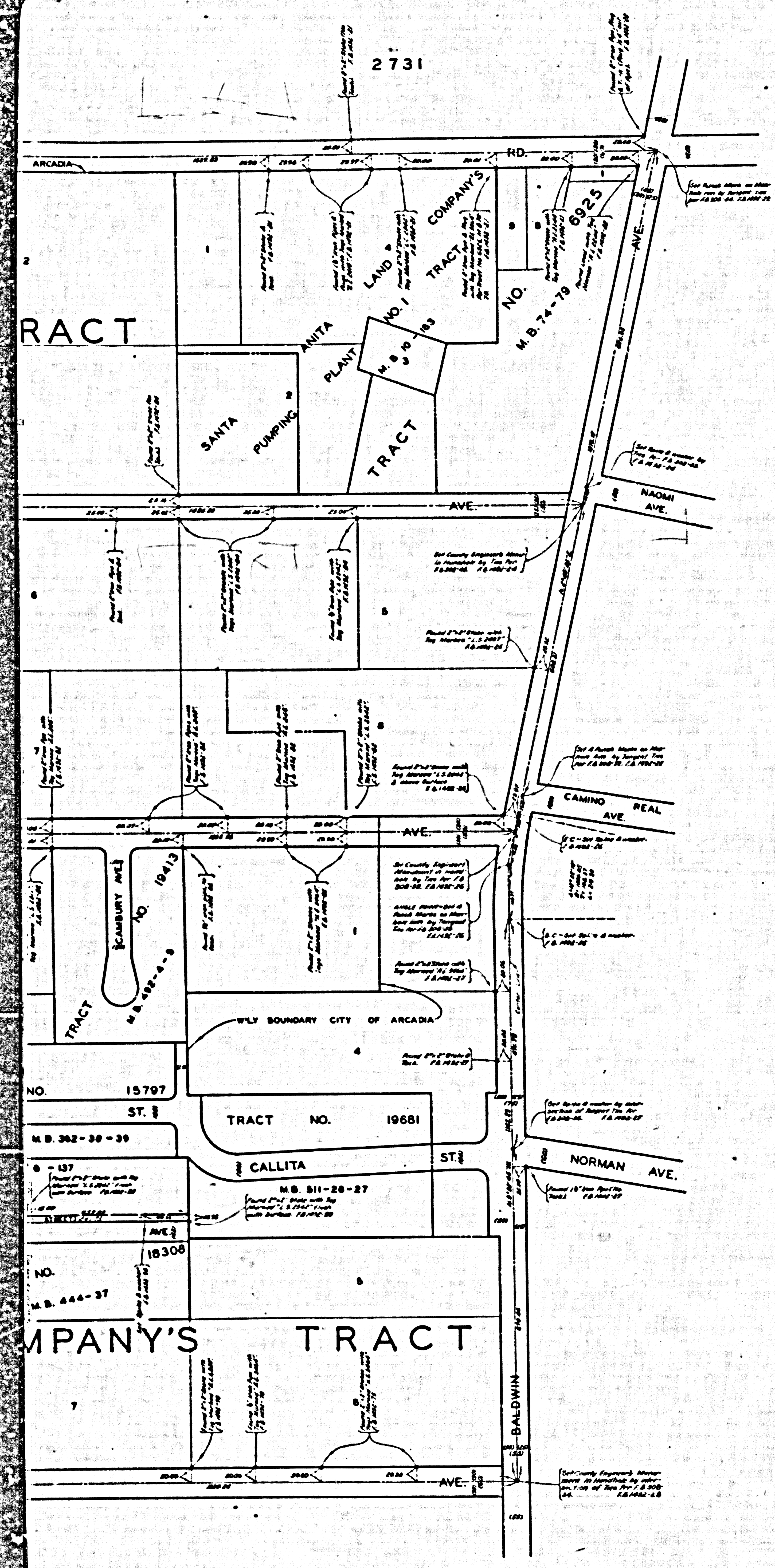
JOB NUMBER 0303.00
 JOHN A. LAMBIE - COUNTY ENGINEER
 SURVEYED AUG. 1949 - NOV. 1953
 SURVEYED ON REQUEST OF THE COUNTY
 ENGINEER UNDER AUTHORITY OF THE
 BOARD OF SUPERVISORS BY ORDER DATED
 JUNE 3 1942
 BEARINGS ARE BASED ON THE CALIFORNIA
 COORDINATE SYSTEM ZONE 1 PER SEC. 8609
 PUBLIC RESOURCES CODE SEE C.S. 9423

INDEX 44

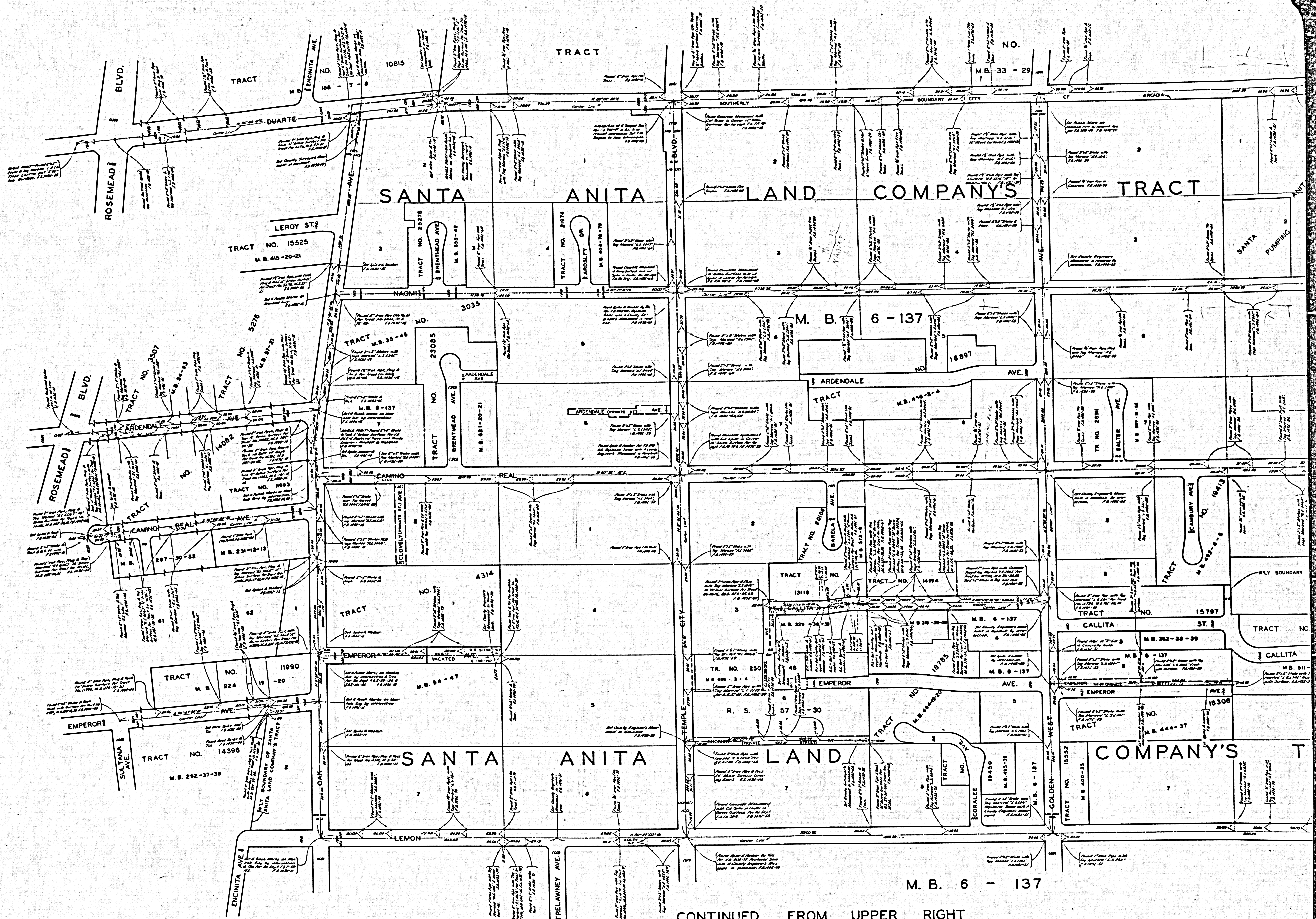
F.B. 1747-129-138
 F.D. 1492-5-90
 FIELD WORK BY..... M.A. VAN DEREN
 OFFICE WORK BY..... C.W. COX
 CHECKED BY..... W.D. REYNOLDS
 S.W. MILLER
 THIS SURVEY MADE TO ESTABLISH CENTER
 LINES ON THE STREETS IN THIS AREA
 PRELIMINARY TO CONSTRUCTION OF SEWERS
 IN THE SANITARY SEWER DISTRICT'S
 COUNTY IMPROVEMENT NO'S. 1277, 1332
 AND 1323 RESPECTIVELY
 ALL COUNTY ENGINEER MONUMENTS
 AND COUNTY SURVEYOR MONUMENTS
 ARE 2" IRON PIPES SET IN CONCRETE
 WITH BRASS CAPS MARKED UNLESS
 OTHERWISE SHOWN



CSB-2547
 A1 OF A 3



CSB-2547
A20FA3



M. B. 6 - 137

CONTINUED FROM UPPER RIGHT

CSB-2547
A30FA3