

COUNTY OF LOS ANGELES  
 MAP OF  
**SHOEMAKER AVENUE**  
 FROM  
**DEL AMO BOULEVARD**  
 TO  
**WHITTIER BOULEVARD**  
 COUNTY SURVEYORS MAP NO. B-2550  
 SHEET NO. 1 OF 4 SHEETS  
 SCALE: 1 INCH = 100 FT.

JOB NUMBER 0074.74  
 WILLIAM J. FOX - COUNTY ENGINEER  
 SURVEYED - 1954 - 1955

SURVEYED ON REQUEST OF THE REGIONAL PLANNING COMMISSION UNDER SEC. 79, ORD. 4099 BY LETTER DATED MAR. 22, 1954 AND BY BOARD ORDER DATED DEC. 11, 1951.

BEARINGS ARE BASED ON THE CALIFORNIA COORDINATE SYSTEM ZONE 7, PER ACT 8351 GENERAL LAWS. SEE C.S. 9423

F.B. 1805 - 5 - 234

FIELD WORK BY A.N. HELLSTROM  
 OFFICE WORK BY R.L. GREEN  
 CHECKED BY J.A.J.A.

THIS MAP FILED OCT. 1956  
 JOHN A. LAMBIE - COUNTY ENGINEER

NOTE: ALL CORNER CUT-OFFS TO CONFORM TO SUBDIVISION STANDARDS.  
 Revised Dec. 1956 by J.L.L.

CSB-2550-1  
 A10FA4

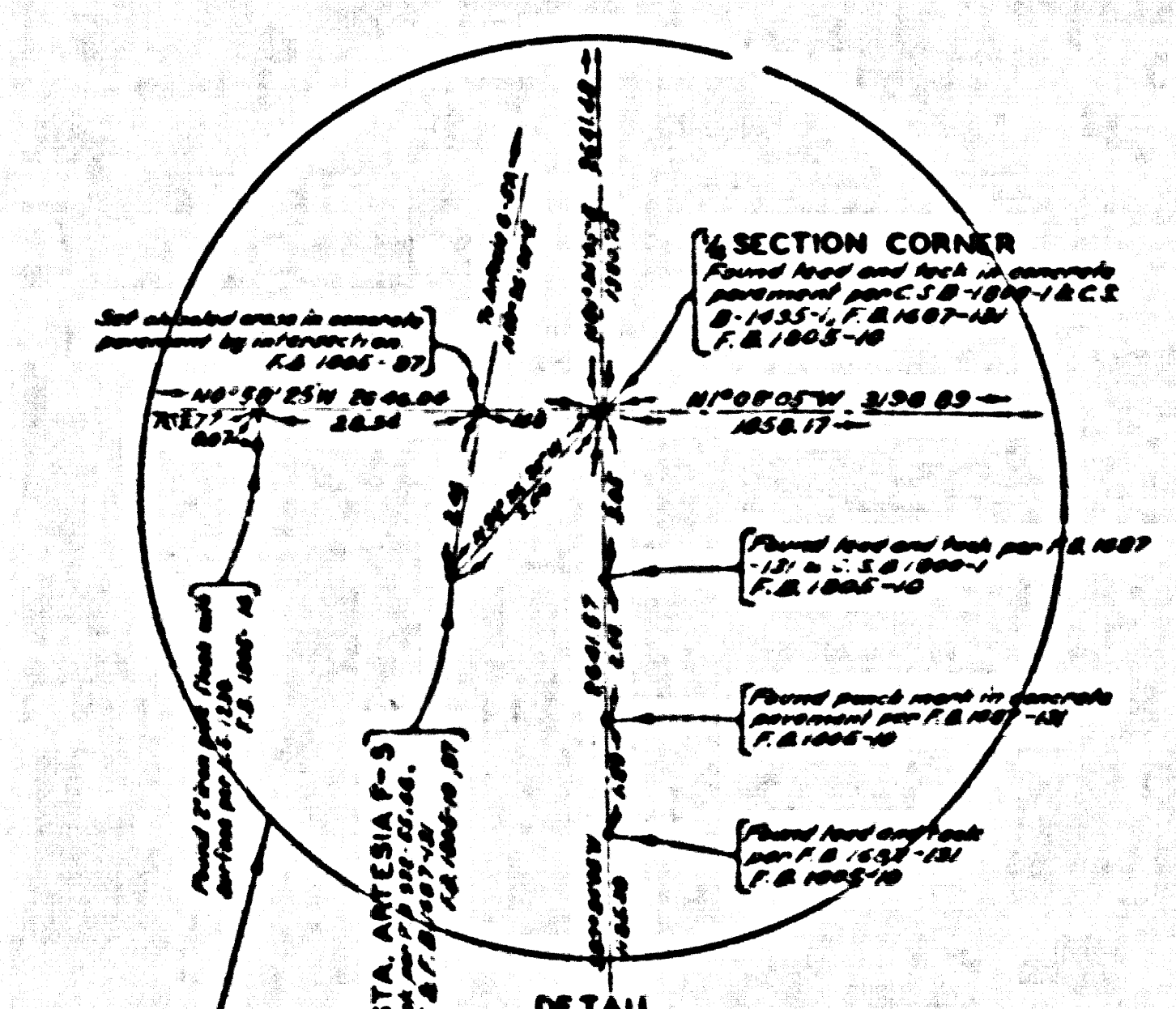
Proposed Right of Way Line per C.S. 2412-2

CARMENITA C.S.B. 942-2 RD.

Proposed Right of Way Line per C.S. 2412-2

BOUNDARY ORANGE COUNTY  
BOUNDARY LOS ANGELES COUNTY

SECTION CORNER  
TRAVERSE STA. ARTESIA G-5A  
Point of Beginning of Section 5, T. 4 S., R. 11 W.  
Established by C.S. 1800-11 (1907-08)  
C.S. 1800-11 (1907-08)  
F.B. 1800-11, 02

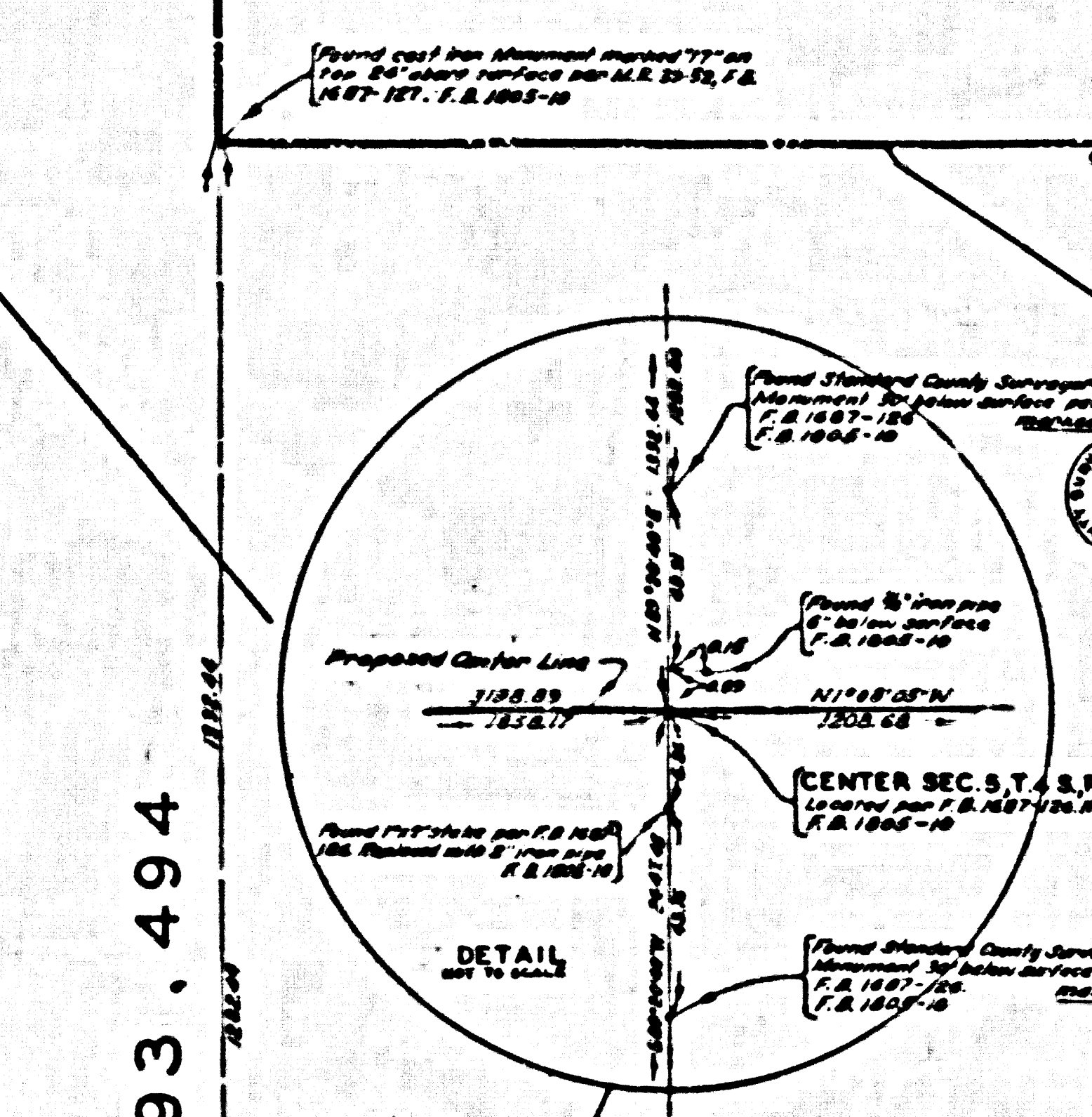


SECTION CORNER  
TRAVERSE STA. ARTESIA G-5A  
Point of Beginning of Section 5, T. 4 S., R. 11 W.  
Established by C.S. 1800-11 (1907-08)  
C.S. 1800-11 (1907-08)  
F.B. 1800-11, 02

DETAIL  
NOT TO SCALE

N. E. 1/4 SEC. 5, T. 4 S., R. 11 W.

COYOTES



SECTION CORNER  
TRAVERSE STA. ARTESIA G-5A  
Point of Beginning of Section 5, T. 4 S., R. 11 W.  
Established by C.S. 1800-11 (1907-08)  
C.S. 1800-11 (1907-08)  
F.B. 1800-11, 02

DETAIL  
NOT TO SCALE

S. E. 1/4 SEC. 5, T. 4 S., R. 11 W.

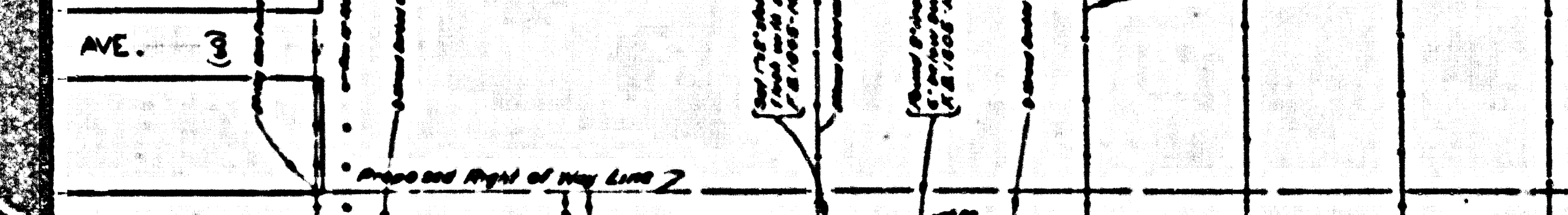
TRACT NO. 9598

M. B. 169 - 27

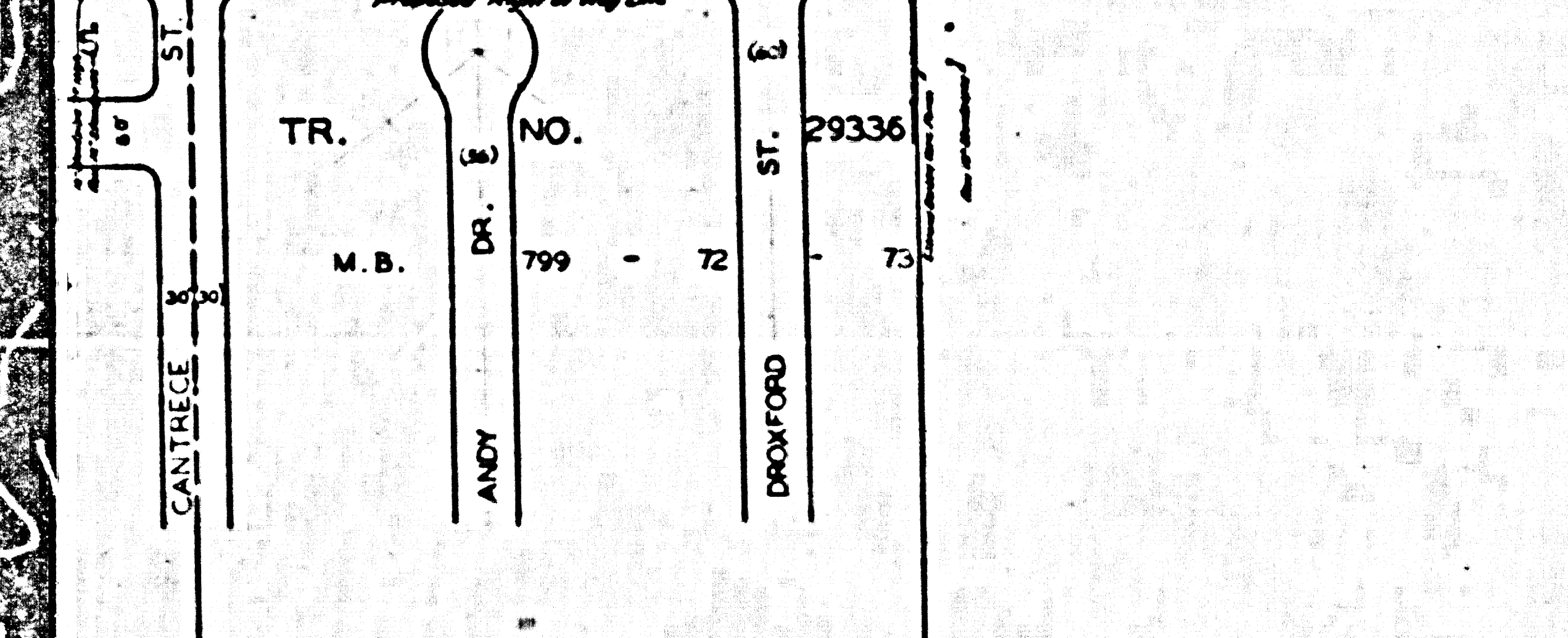
COYOTES

2. T. 3 S., R. 11 W.

020

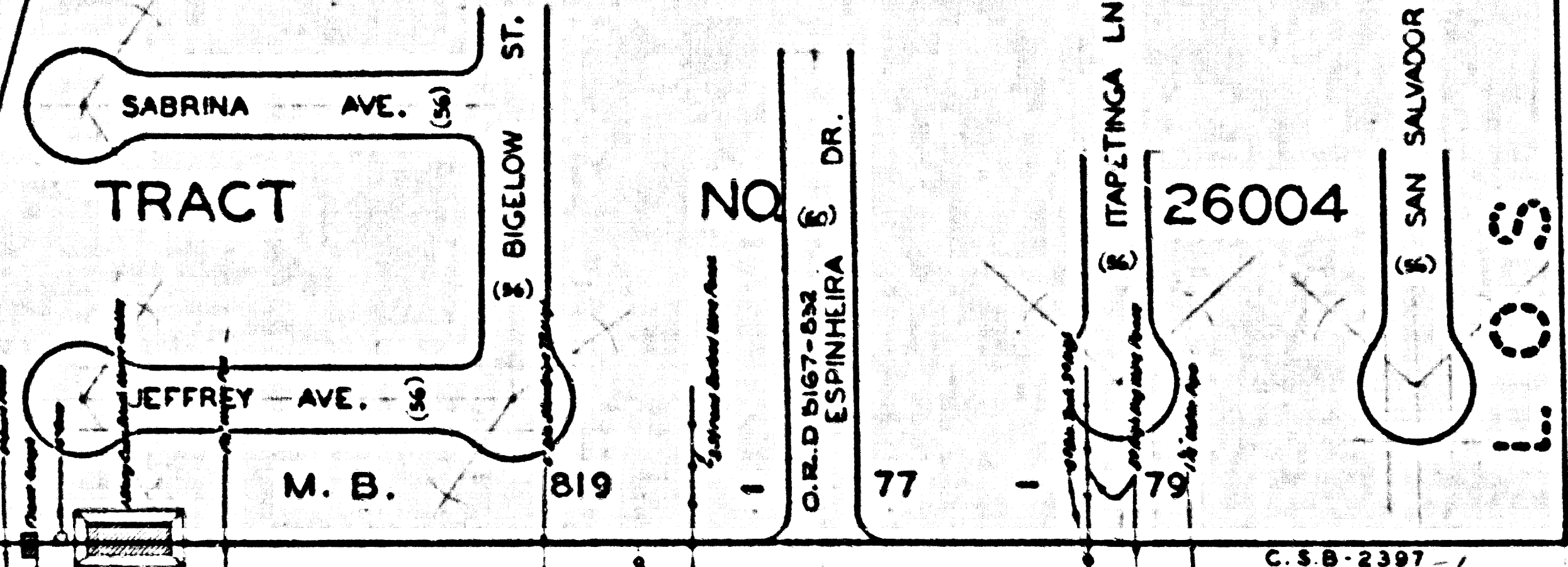


Proposed Right of Way Line

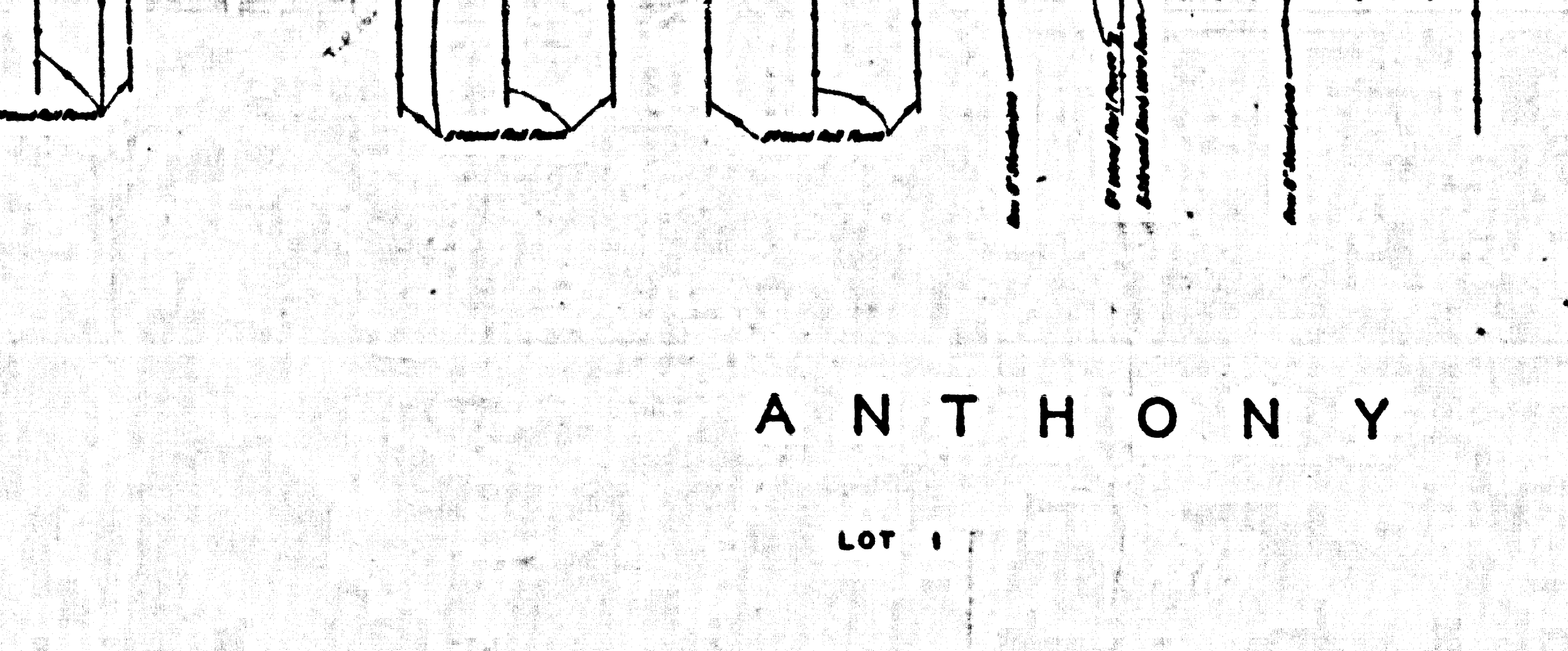


Proposed Right of Way Line

2. T. 3 S., R. 11 W.



Proposed Right of Way Line



Proposed Right of Way Line

TRACT NO. 819

ANTHONY

LOT 1

M. B. 15 110, III

RANCHO

N. W. 1/4 SEC. 5, T. 4 S., R. 11 W.

S. W. 1/4 SEC. 5 T. 4 S., R. 11 W.

TRACT NO. 8709  
BECHARD AVE.  
SECTION CORNER M.B. 140-77, 78  
C.S.B. 1435-1 AVE.  
TRAVERSE STA. ARTESIA E-3

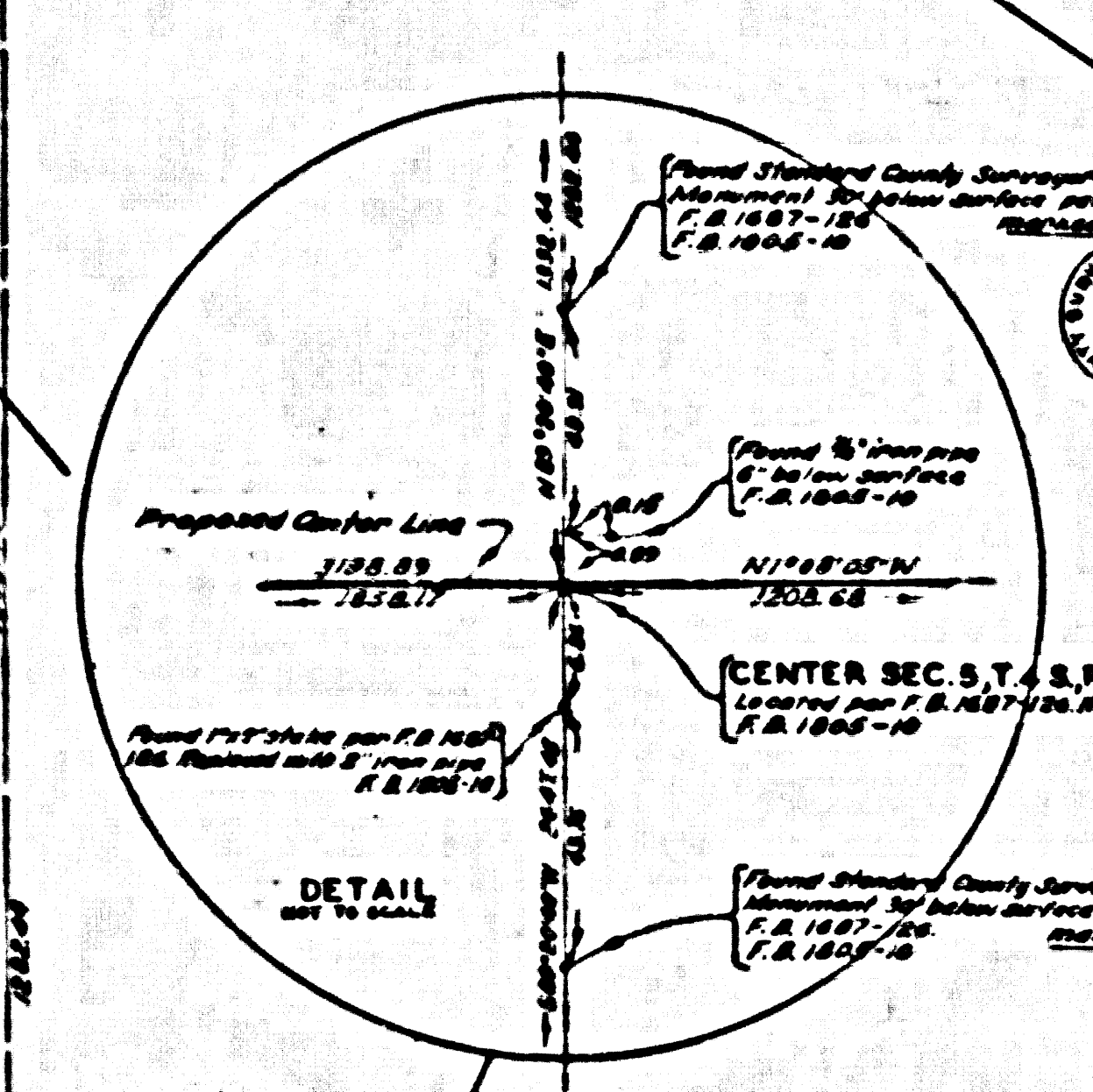
CSB-2550-1  
A20FA 4

BLOOMFIELD C.S.B. 1435-1 AVE.

SECTION CORNER  
TRAVERSE STA. ARTESIA G-5A  
Point of Beginning of Section 5, T. 4 S., R. 11 W.  
Established by C.S. 1800-11 (1907-08)  
C.S. 1800-11 (1907-08)  
F.B. 1800-11, 02

DETAIL  
NOT TO SCALE

PAT. 1-493,494  
C.S. 5313  
C.S. 6282



SECTION CORNER  
TRAVERSE STA. ARTESIA G-5A  
Point of Beginning of Section 5, T. 4 S., R. 11 W.  
Established by C.S. 1800-11 (1907-08)  
C.S. 1800-11 (1907-08)  
F.B. 1800-11, 02

DETAIL  
NOT TO SCALE

CENTER SEC. 5, T. 4 S., R. 11 W.

TRACT NO. 9598

M. B. 169 - 27

Proposed Right of Way Line

Proposed Right of Way Line

Proposed Right of Way Line

Proposed Right of Way Line

Proposed Right of Way Line

Proposed Right of Way Line

Proposed Right of Way Line

Proposed Right of Way Line

Proposed Right of Way Line

Proposed Right of Way Line

Proposed Right of Way Line

Proposed Right of Way Line

Proposed Right of Way Line

Proposed Right of Way Line

Proposed Right of Way Line

Proposed Right of Way Line

Proposed Right of Way Line

32 TRAVERSE STA. ARTESIA G-4  
Found Standard County Survey  
Measurements in accordance  
with F.S. 1865-15

SECTION CORNER  
Found Standard County Survey  
Measurements in accordance  
with F.S. 1865-15

TRAVERSE STA. ARTESIA G-3  
Found Standard County Survey  
Measurements in accordance  
with F.S. 1865-15

Proposed Right of Way Line per C.S. 1435-1  
F.S. 1865-15

Found and per  
see C.S. 1435-1  
F.S. 1865-15

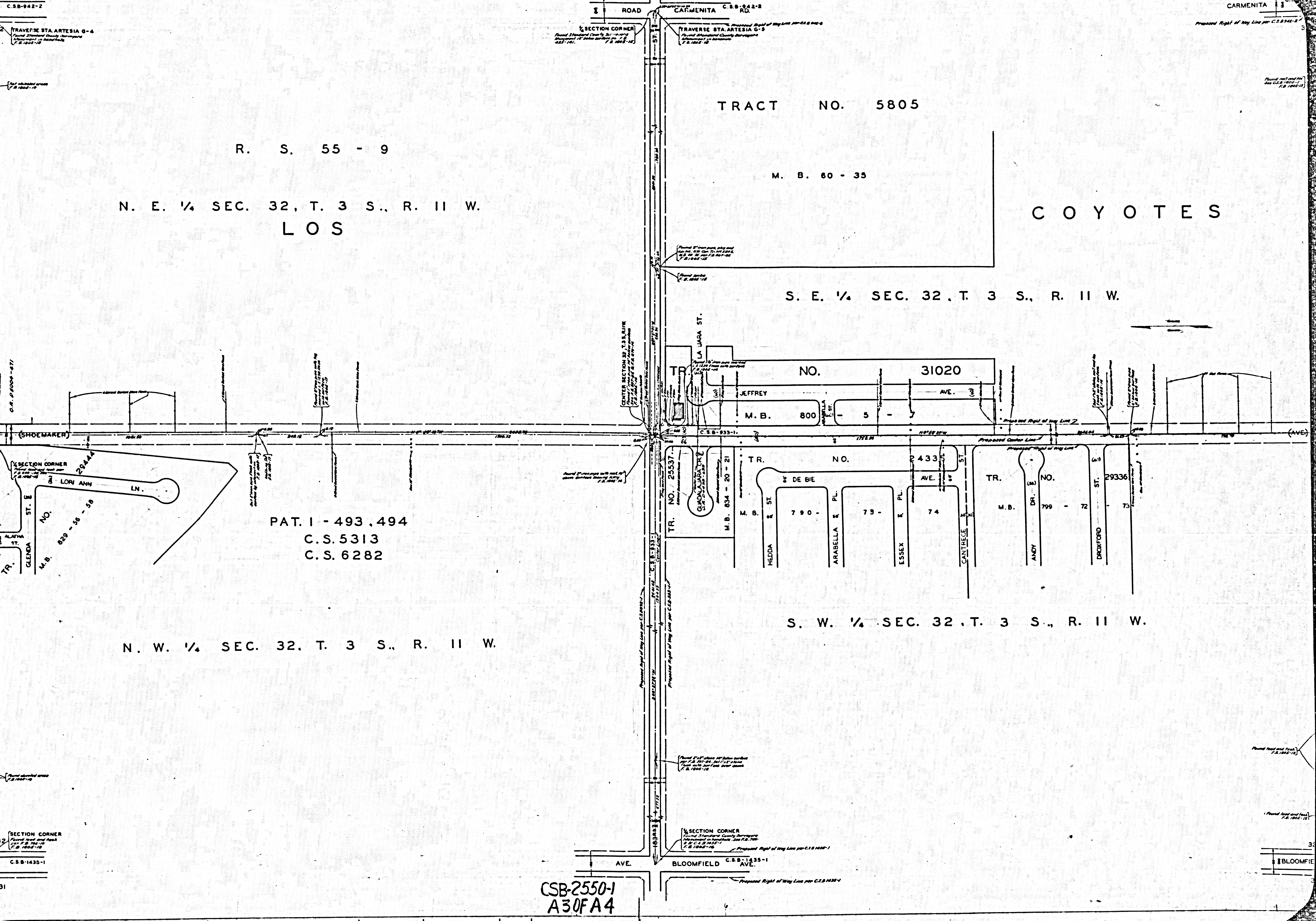
Found and per  
see C.S. 1435-1  
F.S. 1865-15

SECTION CORNER  
Found Standard County Survey  
Measurements in accordance  
with F.S. 1865-15

SECTION CORNER  
Found Standard County Survey  
Measurements in accordance  
with F.S. 1865-15

Found and per  
see C.S. 1435-1  
F.S. 1865-15

CSB-2550-1  
A30FA4



R. S. 55 - 9  
 N. E. 1/4 SEC. 32, T. 3 S., R. 11 W.  
 LOS

TRACT NO. 5805  
 M. B. 60 - 35

COYOTES

S. E. 1/4 SEC. 32, T. 3 S., R. 11 W.

PAT. 1 - 493,494  
 C.S. 5313  
 C.S. 6282

S. W. 1/4 SEC. 32, T. 3 S., R. 11 W.

TR. NO. 25537  
 M. B. 834 - 20 - 21

TR. NO. 31020  
 M. B. 800 - 5 - 7

TR. NO. 2433  
 M. B. 790 - 79 - 74

TR. NO. 29336  
 M. B. 799 - 72 - 73

TR. NO. 829 - 56 - 58  
 M. B. 829 - 56 - 58

TR. NO. 829 - 56 - 58  
 M. B. 829 - 56 - 58

SECTION CORNER  
 Found Standard County Survey  
 Measurements in accordance  
 with F.S. 1865-15

SECTION CORNER  
 Found Standard County Survey  
 Measurements in accordance  
 with F.S. 1865-15

Found and per  
see C.S. 1435-1  
F.S. 1865-15

BLOOMFIELD

CSB-2550-1  
 A30FA4

C.S.B.942-3 CARMENITA C.S.B.942-2

1/4 SEC. COR-ANGLE POINT  
Found Standard County Surveyors  
Authority on location per F.S. 694-  
06, F.S. 695-16  
F.S. 1985-18

TRAVERSE STA. ARTESIA G-3  
Found Standard County Surveyors  
Authority on location per F.S. 694-  
06, F.S. 695-16  
F.S. 1985-18

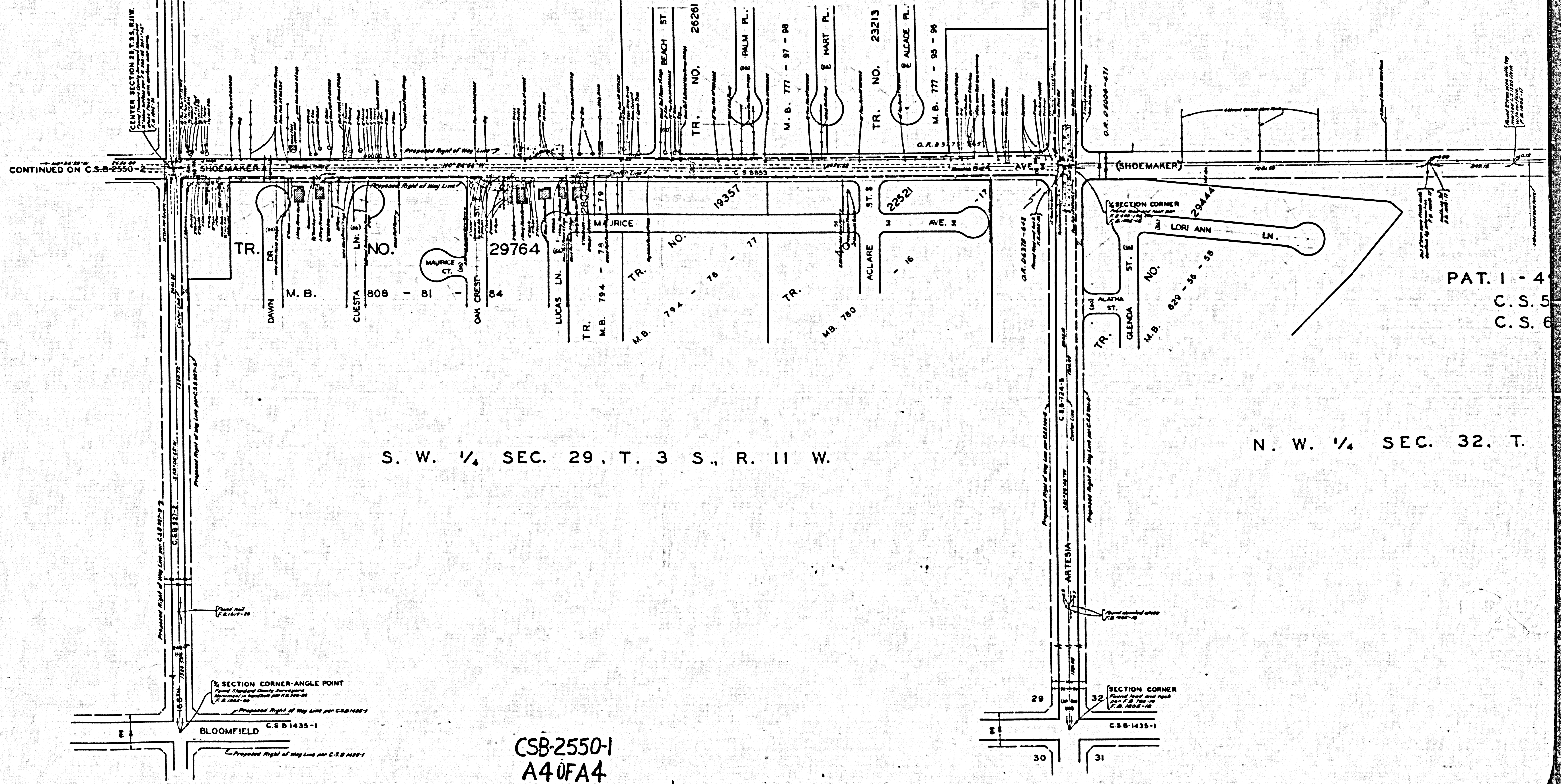
28 33  
C.S.B.942-2

SECTION CORNER  
Found Standard County Surveyors  
Authority on location per F.S. 694-  
06, F.S. 695-16  
F.S. 1985-18

TRAVERSE STA. ARTESIA G-4  
Found Standard County Surveyors  
Authority on location per F.S. 694-  
06, F.S. 695-16  
F.S. 1985-18

S. E. 1/4 SEC. 29. T. 3 S., R. 11 W.  
RANCHO

R. S. 55  
N. E. 1/4 SEC. 32, T. 3  
LOS



S. W. 1/4 SEC. 29, T. 3 S., R. 11 W.

N. W. 1/4 SEC. 32, T. 3

CSB-2550-1  
A40FA4

PAT. I - 4  
C.S. 5  
C.S. 6