

COYOTES

N. E. 1/4 SEC. 29. T. 3 S. R. II W.

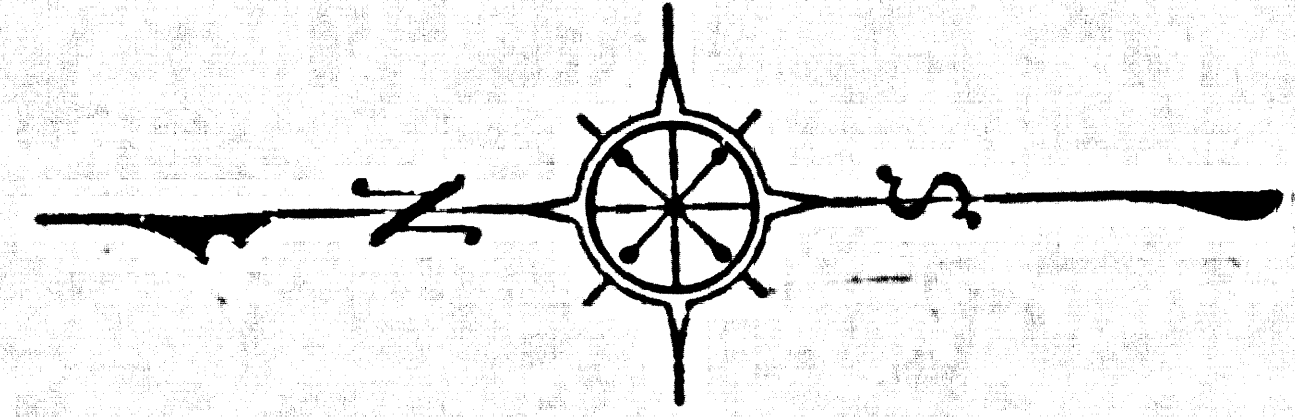
N. W. 1/4 SEC. 29. T. 3 S. R. II W.

ESIA G-2

Proposed Right of Way Line per C.S.B. 942-3
C.S.B. 942-3
ROAD C.S.B. 942-2
TRAVERSE STA. ARTESIA G-3
Found Standard County Surveyors Monument in Section per C.S.B. 1005-20
C.S.B. 1005-20

CENTER SECTION 29, T. 3 S., R. II W.
Found Standard County Surveyors Monument in Section per C.S.B. 1005-20
C.S.B. 1005-20

CONTINUED FROM C.S.B. 2550-1



COUNTY OF LOS ANGELES
MAP OF
SHOEMAKER AVENUE
FROM
DEL AMO BOULEVARD
TO
WHITTIER BOULEVARD

COUNTY SURVEYORS MAP NO. B-2550
SHEET NO. 2 OF 4 SHEETS
SCALE: 1 INCH = 100 FT.

JOB NUMBER 0074.74 *L.M. 33, 34*

WILLIAM J. FOX - COUNTY ENGINEER
SURVEYED - 1954 - 1955

SURVEYED ON REQUEST OF THE REGIONAL
PLANNING COMMISSION UNDER SEC. 79,
ORD. 4099 BY LETTER DATED MAR. 22, 1954
AND BY BOARD ORDER DATED DEC. 11, 1951.

BEARINGS ARE BASED ON THE CALIFORNIA
COORDINATE SYSTEM ZONE 7, PER ACT 4381
GENERAL LAWS
SEE C.S. 9423

F.B. 1005-B-234

FIELD WORK BY A.N. HELLSTROM
OFFICE WORK BY R.L. GREEN
CHECKED BY J.A.J.A.

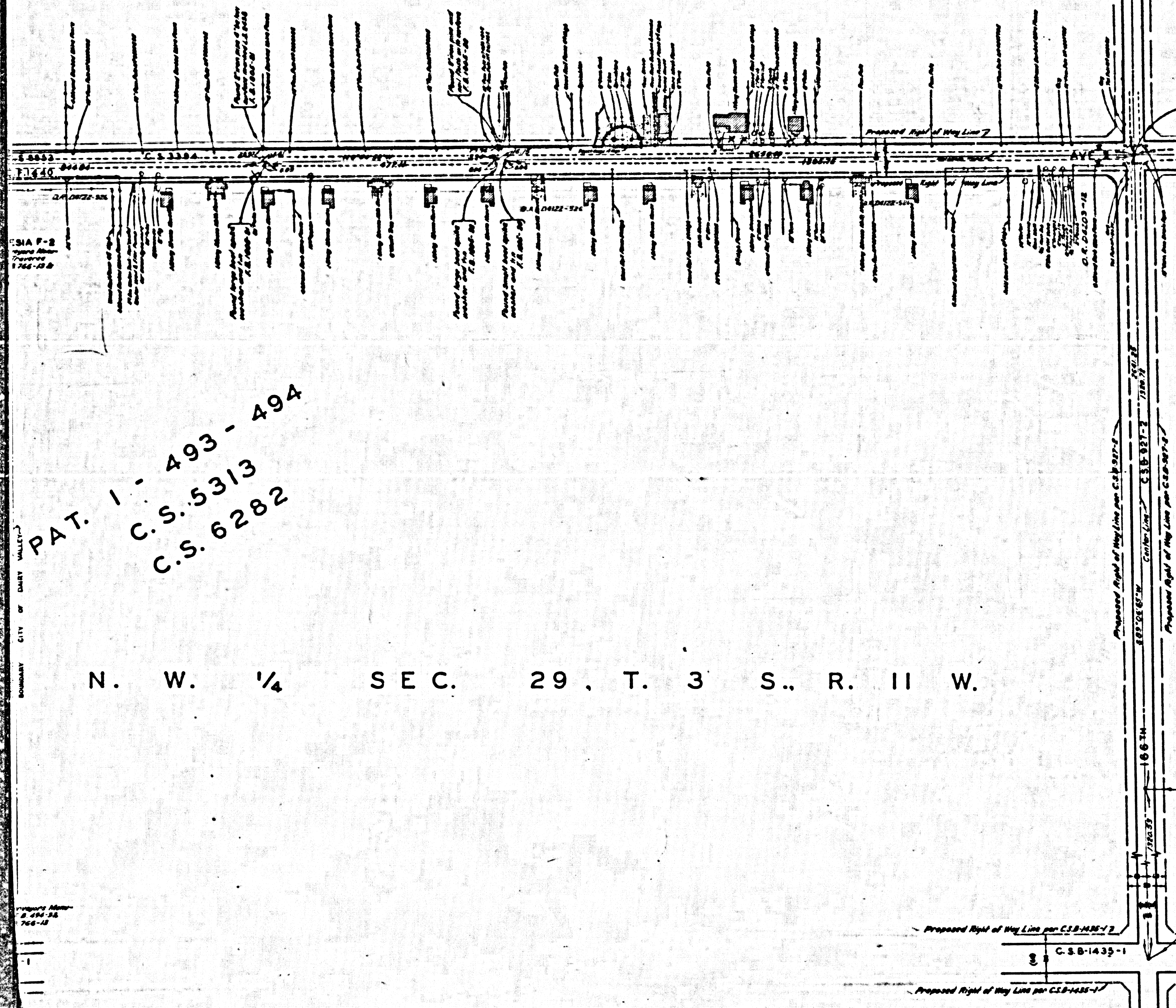
THIS MAP FILED OCT. 1956
JOHN A. LAMBIE - COUNTY ENGINEER

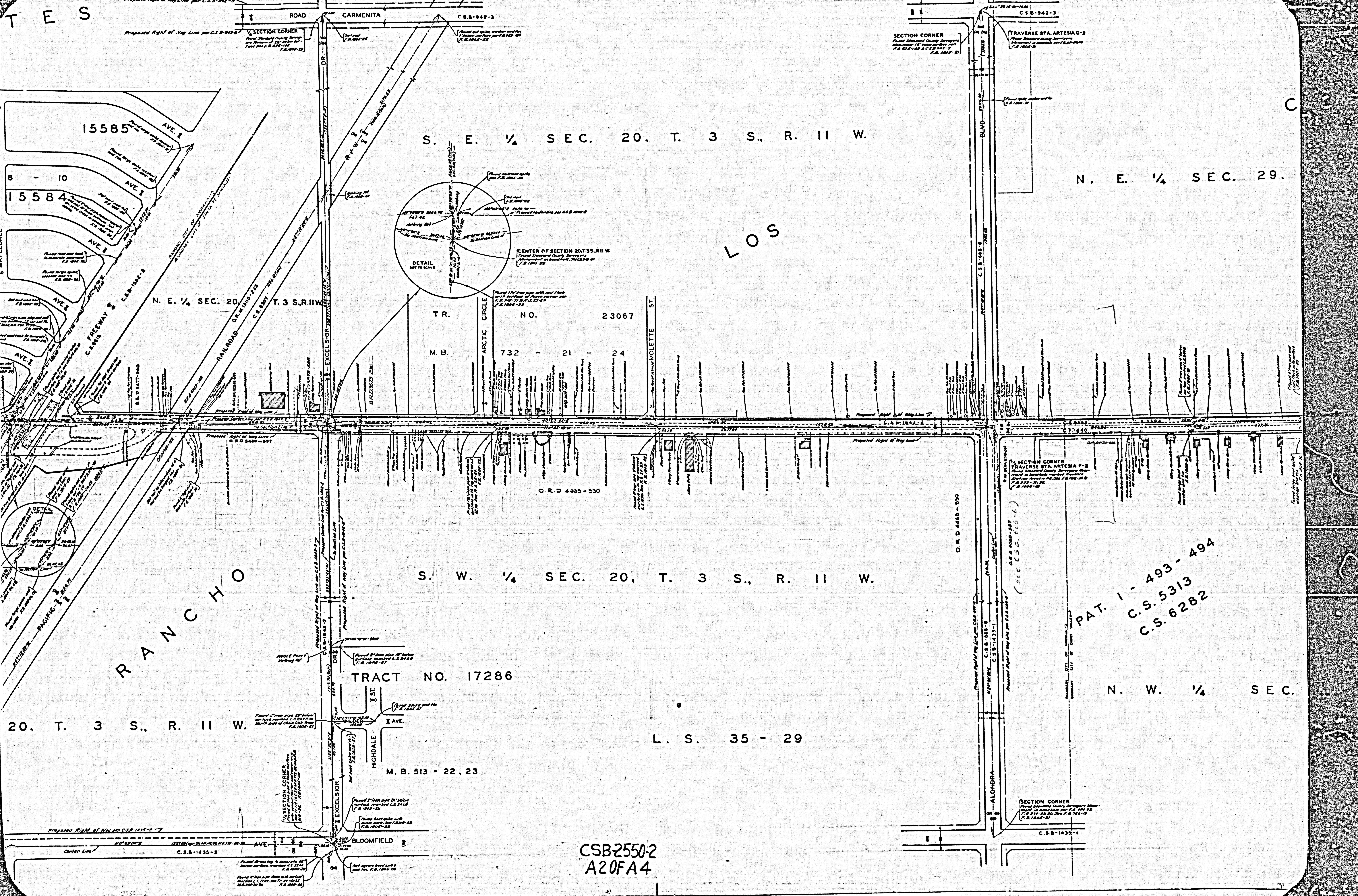
NOTE: ALL CORNER CUT-OFFS TO CONFORM TO
SUBDIVISION STANDARDS.

REVISED: JUNE 1959 - M.H.
JULY 55
APRIL 1964 - J.A.C.

PAT. 1 - 493 - 494
C.S. 5313
C.S. 6282

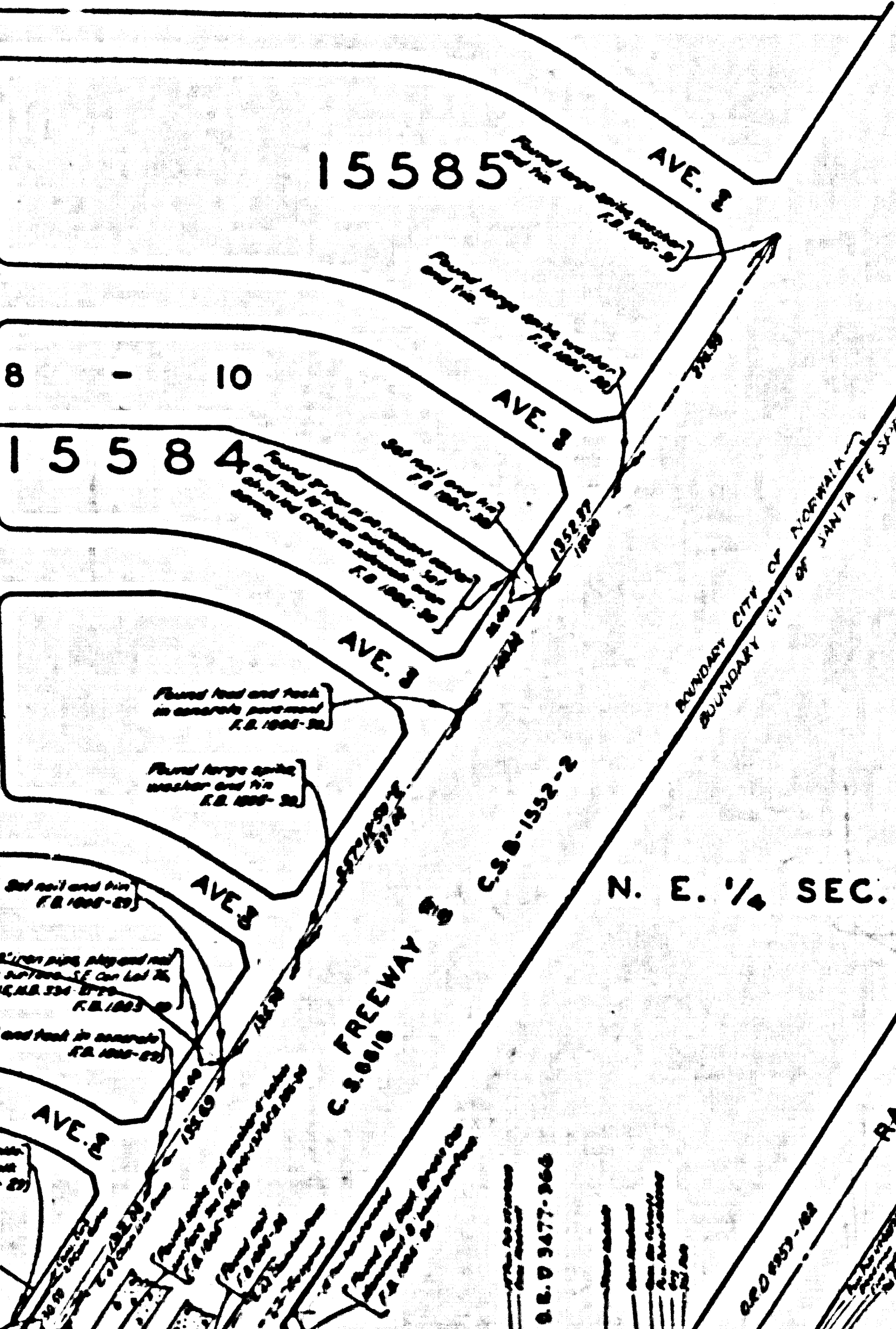
CSB2550-2
A10FA4





T E S

C



S. E. 1/4 SEC. 20. T. 3 S., R. 11 W.

N. E. 1/4 SEC. 29.

LOS

N. E. 1/4 SEC. 20, T. 3 S., R. 11 W.

TR. NO. 23067
M. B. 732 - 21 - 24

S. W. 1/4 SEC. 20, T. 3 S., R. 11 W.

RANCHO

20, T. 3 S., R. 11 W.

TRACT NO. 17286

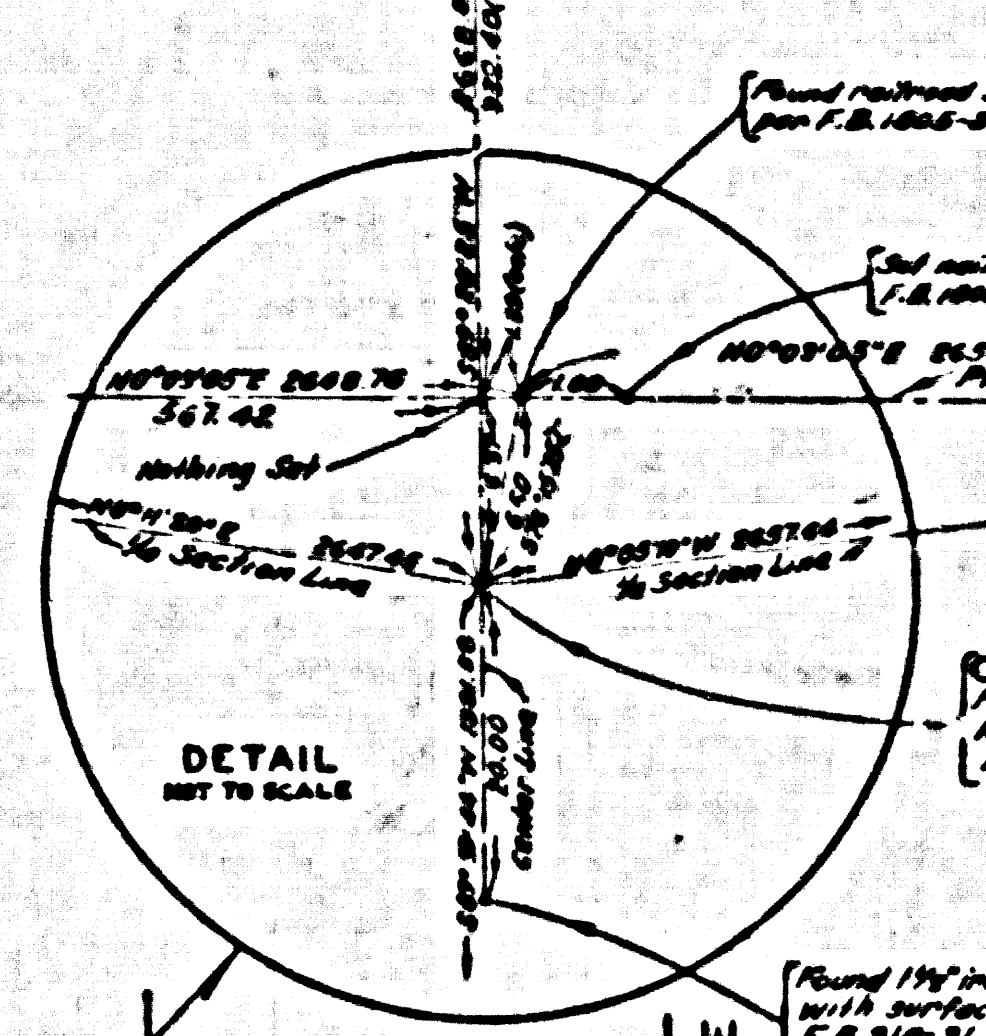
M. B. 513 - 22, 23

L. S. 35 - 29

N. W. 1/4 SEC.

PAT. 1 - 493 - 494
C.S. 5313
C.S. 6282

CSB-2550-2
A20FA4



CENTER OF SECTION 20, T. 3 S., R. 11 W.



COYOTES

S. E. 1/4 SEC. 17, T. 3 S., R. 11 W.

LOS

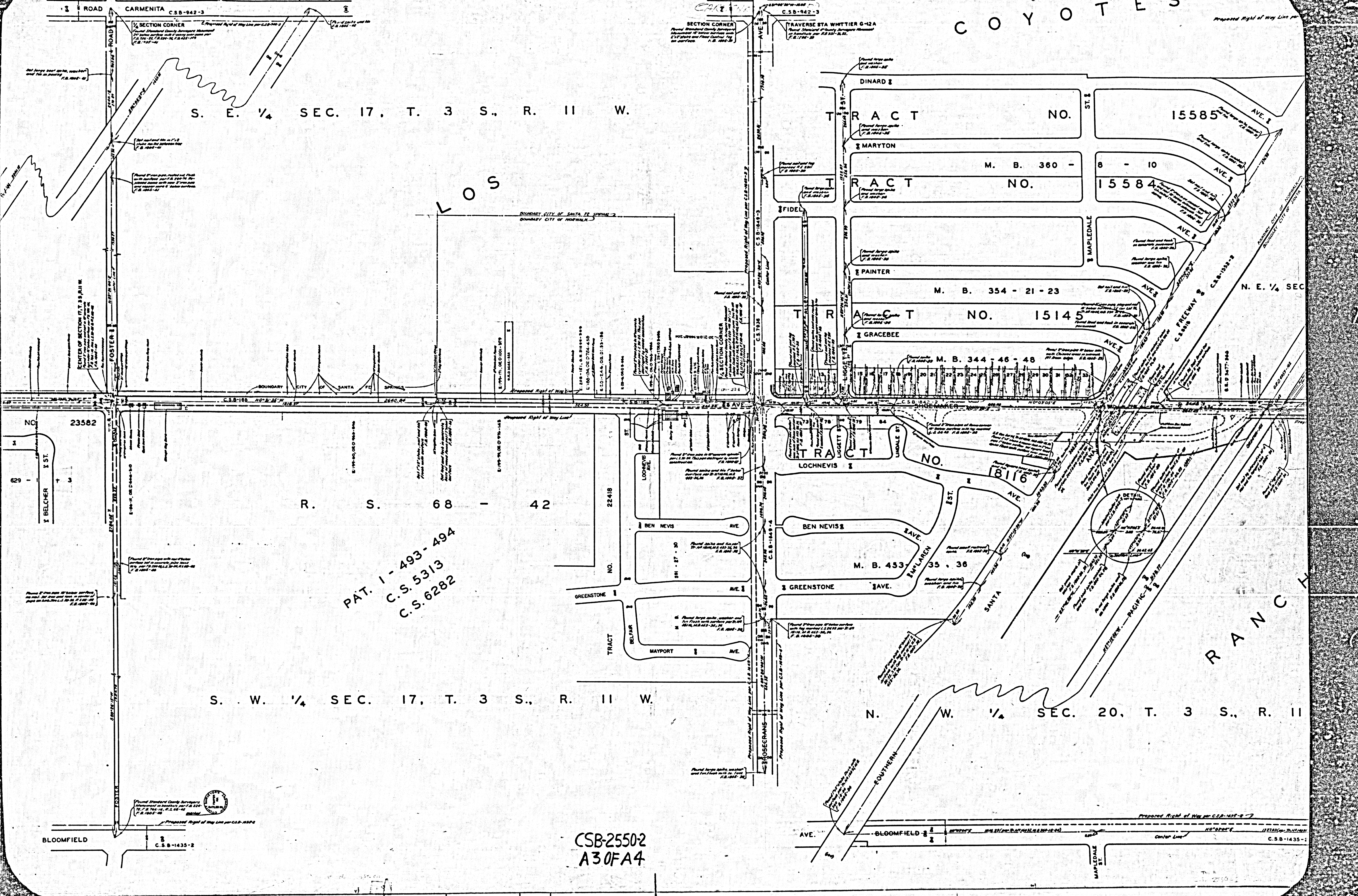
R. S. 68 - 42

S. W. 1/4 SEC. 17, T. 3 S., R. 11 W.

N. W. 1/4 SEC. 20, T. 3 S., R. 11

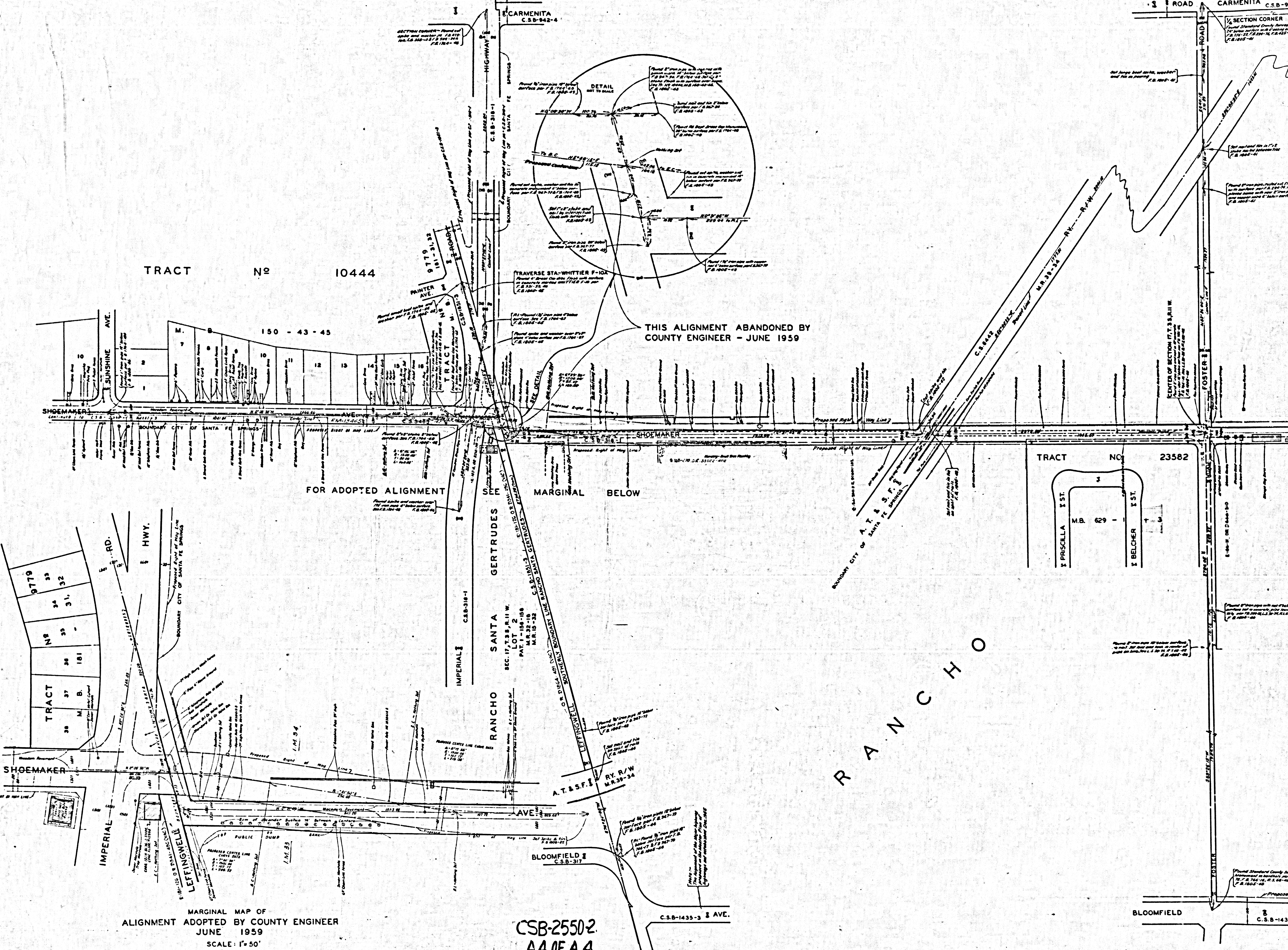
PAT. 1-493-494
C.S. 5313
C.S. 6282

CSB-2550-2
A30FA4



5-9-59 10:54 A PROVVISORE YTHUOD SHEET NO. 5 OF 5 ON T332

5-9-59 10:54 A PROVVISORE YTHUOD SHEET NO. 5 OF 5 ON T332



MARGINAL MAP OF ALIGNMENT ADOPTED BY COUNTY ENGINEER JUNE 1959
SCALE: 1" = 50'

CSB-2550-2
A4 OF A 4

C.S.B.-1435-3 & AVE.

C.S.B.-1435-2

C.S.B.-942

C.S.B.-942-4

THIS ALIGNMENT ABANDONED BY COUNTY ENGINEER - JUNE 1959

FOR ADOPTED ALIGNMENT SEE MARGINAL BELOW

RANCHO

TRACT NO 10444

TRACT NO 23582

TRACT NO 9779
33 34 32
35 31
36 181
37 M.B.
38

150 - 43 - 43

RANCHO SANTA GERTRUDES
SEC. 17, T.33, R.11 W.
LOT 2
PAT. 1-156-108
M.R. 32-10
M.R. 32-108

TRACT NO 23582
PRISCILLA ST.
M.B. 629 -
BELCHER ST.

BLOOMFIELD C.S.B.-317

BLOOMFIELD

CARMENITA

CARMENITA

SECTION CORNER

SECTION CORNER

C.S.B.-1435-2

C.S.B.-1435-2

C.S.B.-1435-2

C.S.B.-1435-2