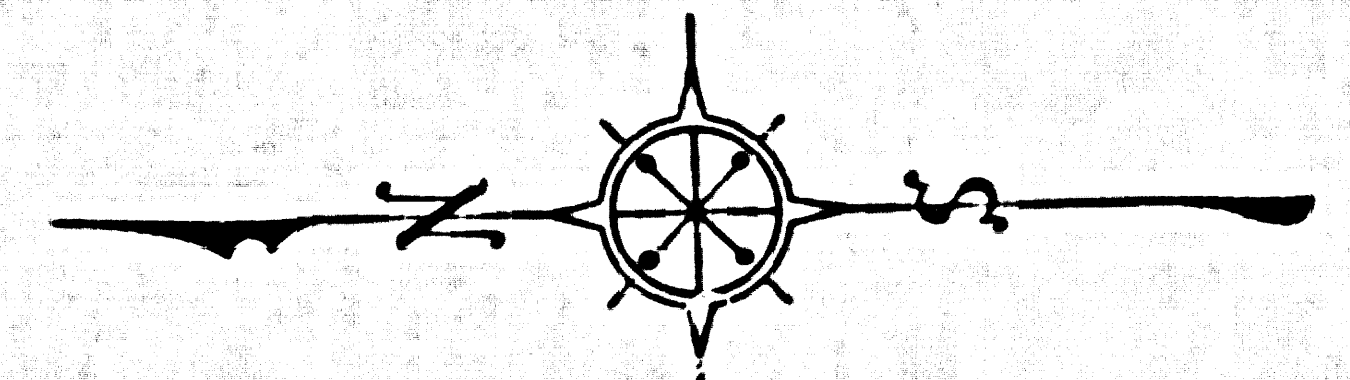
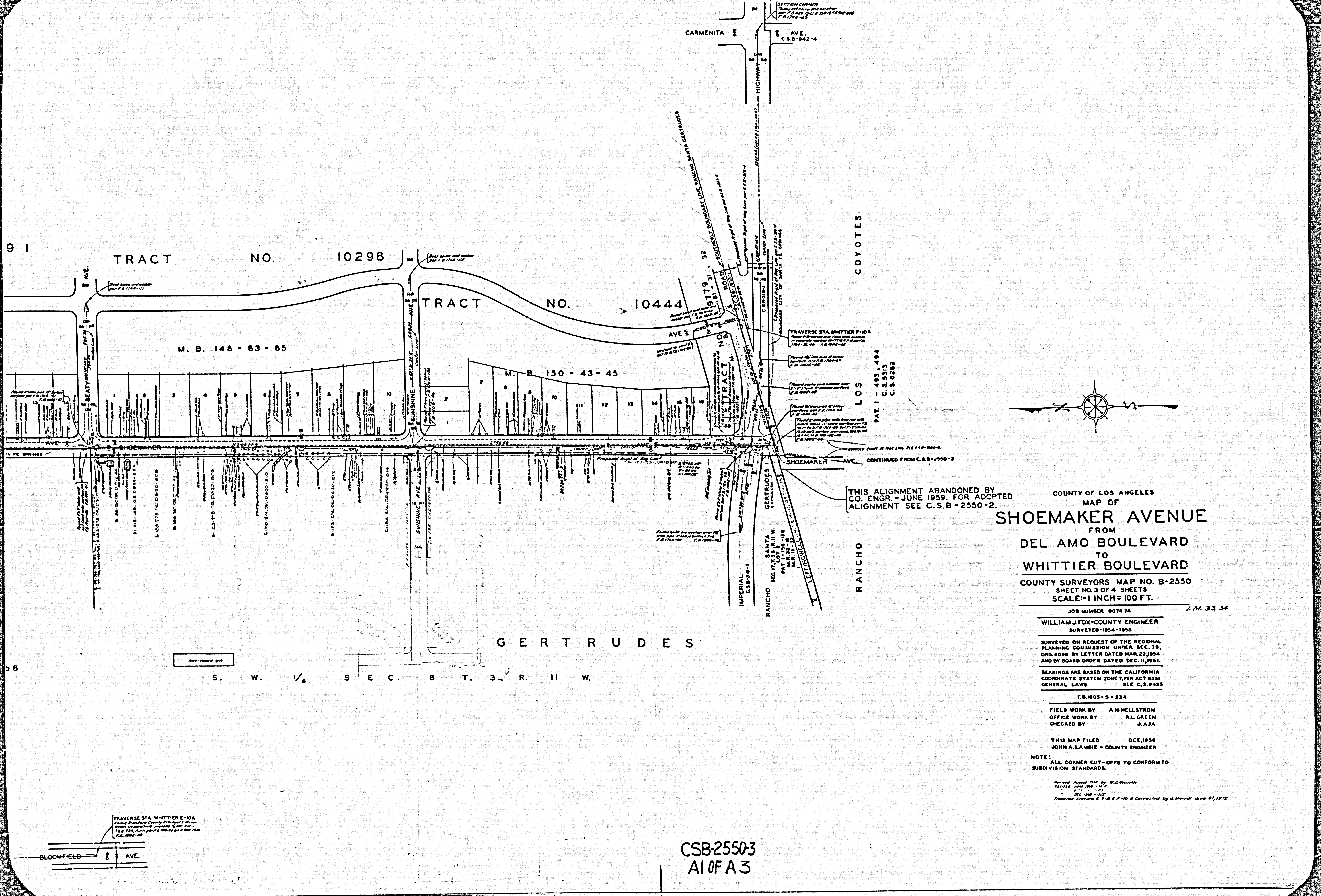


9 1

5 8



COUNTY OF LOS ANGELES  
 MAP OF  
**SHOEMAKER AVENUE**  
 FROM  
 DEL AMO BOULEVARD  
 TO  
 WHITTIER BOULEVARD  
 COUNTY SURVEYORS' MAP NO. B-2550  
 SHEET NO. 3 OF 4 SHEETS  
 SCALE: 1 INCH = 100 FT.

THIS ALIGNMENT ABANDONED BY  
 CO. ENGR. - JUNE 1959. FOR ADOPTED  
 ALIGNMENT SEE C.S.B-2550-2.

JOB NUMBER 0074 74 J.M. 33 34  
 WILLIAM J. FOX - COUNTY ENGINEER  
 SURVEYED - 1954 - 1955  
 SURVEYED ON REQUEST OF THE REGIONAL  
 PLANNING COMMISSION UNDER SEC. 78,  
 ORD. 4098 BY LETTER DATED MAR. 22, 1954  
 AND BY BOARD ORDER DATED DEC. 11, 1951.  
 BEARINGS ARE BASED ON THE CALIFORNIA  
 COORDINATE SYSTEM ZONE 7, PER ACT 8351  
 GENERAL LAWS SEE C.S.B. 2523  
 F.B. 1805 - 9 - 234  
 FIELD WORK BY A.N. HELLSTROM  
 OFFICE WORK BY R.L. GREEN  
 CHECKED BY J.A.J.A.  
 THIS MAP FILED OCT. 1956  
 JOHN A. LAMBIE - COUNTY ENGINEER

NOTE: ALL CORNER CUT-OFFS TO CONFORM TO  
 SUBDIVISION STANDARDS.

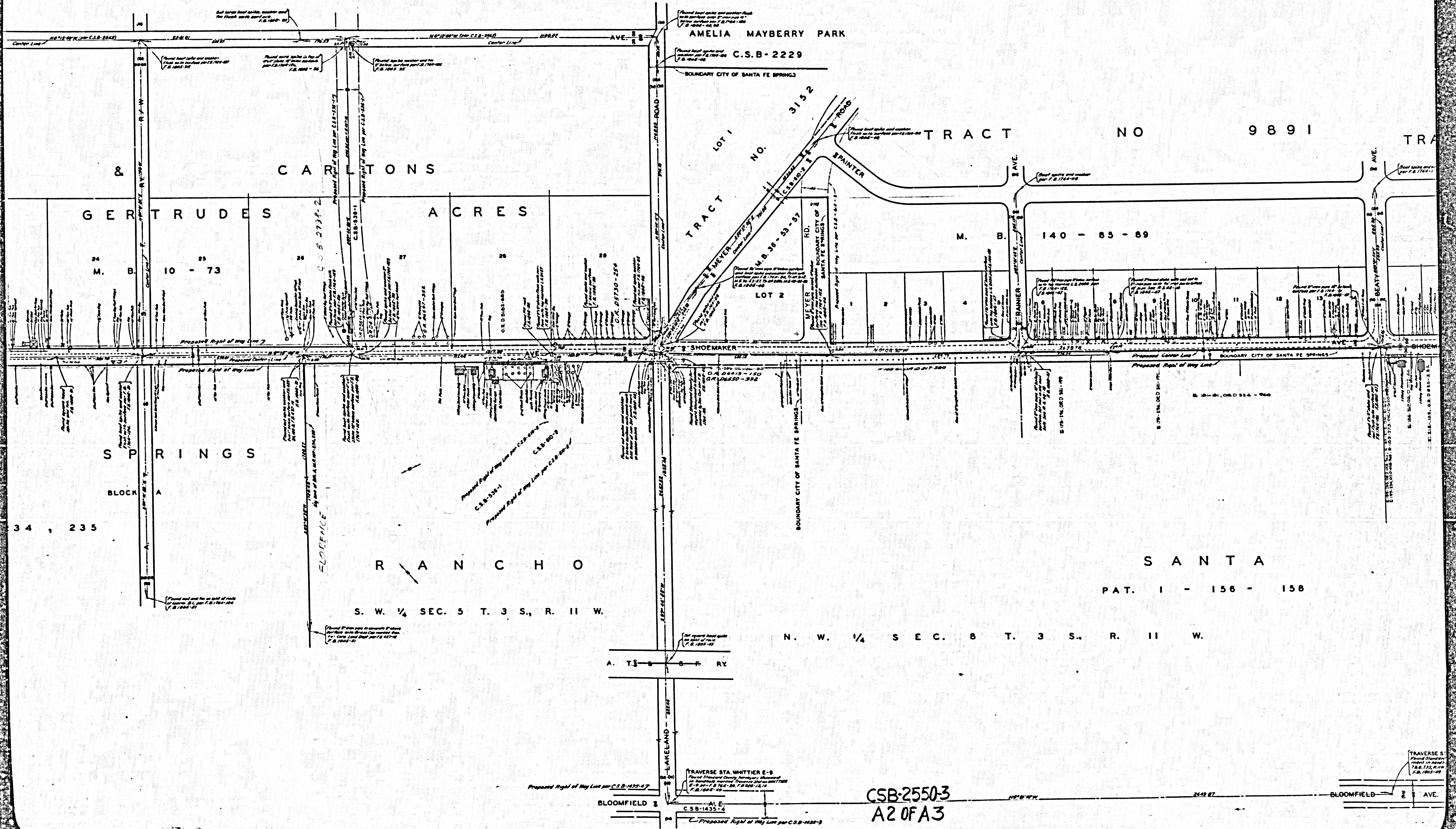
Revised August 1966 By W.D. Reynolds  
 Revised June 1969 - J.H.  
 Revised July 1972 - J.H.  
 Revised Dec. 1983 - J.H.  
 Traverse Station E-7-B & F-10-A Corrected by J. Merrill June 27, 1972

TRAVERSE STA. WHITTIER E-10A  
 Found Standard Corner by 3' traverse  
 measured on Standard Corner by 3' traverse  
 TAB. 122, P. 110 per F.B. 200-40 & F.B. 200-40A  
 F.B. 1800-40

CSB-2550-3  
 A10FA3



AVENUE



AMELIA MAYBERRY PARK

C.S.B-2229

BOUNDARY CITY OF SANTA FE SPRINGS

LOT 1

NO. 3152

TRACT

NO. 3152

SPANTER

RD. MEYER

NO. 36-53-57

LOT 2

BOUNDARY CITY OF SANTA FE SPRINGS

BOUNDARY CITY OF SANTA FE SPRINGS

BOUNDARY CITY OF SANTA FE SPRINGS

BOUNDARY CITY OF SANTA FE SPRINGS

BOUNDARY CITY OF SANTA FE SPRINGS

BOUNDARY CITY OF SANTA FE SPRINGS

BOUNDARY CITY OF SANTA FE SPRINGS

BOUNDARY CITY OF SANTA FE SPRINGS

BOUNDARY CITY OF SANTA FE SPRINGS

BOUNDARY CITY OF SANTA FE SPRINGS

BOUNDARY CITY OF SANTA FE SPRINGS

BOUNDARY CITY OF SANTA FE SPRINGS

BOUNDARY CITY OF SANTA FE SPRINGS

BOUNDARY CITY OF SANTA FE SPRINGS

BOUNDARY CITY OF SANTA FE SPRINGS

BOUNDARY CITY OF SANTA FE SPRINGS

BOUNDARY CITY OF SANTA FE SPRINGS

BOUNDARY CITY OF SANTA FE SPRINGS

BOUNDARY CITY OF SANTA FE SPRINGS

BOUNDARY CITY OF SANTA FE SPRINGS

BOUNDARY CITY OF SANTA FE SPRINGS

BOUNDARY CITY OF SANTA FE SPRINGS

BOUNDARY CITY OF SANTA FE SPRINGS

BOUNDARY CITY OF SANTA FE SPRINGS

BOUNDARY CITY OF SANTA FE SPRINGS

BOUNDARY CITY OF SANTA FE SPRINGS

BOUNDARY CITY OF SANTA FE SPRINGS

BOUNDARY CITY OF SANTA FE SPRINGS

BOUNDARY CITY OF SANTA FE SPRINGS

TRACT NO 9891

M. B. 140 - 85 - 89

SHOEMAKER AVE

BOUNDARY CITY OF SANTA FE SPRINGS

BOUNDARY CITY OF SANTA FE SPRINGS

BOUNDARY CITY OF SANTA FE SPRINGS

BOUNDARY CITY OF SANTA FE SPRINGS

BOUNDARY CITY OF SANTA FE SPRINGS

BOUNDARY CITY OF SANTA FE SPRINGS

BOUNDARY CITY OF SANTA FE SPRINGS

BOUNDARY CITY OF SANTA FE SPRINGS

BOUNDARY CITY OF SANTA FE SPRINGS

BOUNDARY CITY OF SANTA FE SPRINGS

GERTRUDES

M. B. 10 - 73

SPRINGS

BLOCK A

S. W. 1/4 SEC. 5 T. 3 S., R. 11 W.

N. W. 1/4 SEC. 8 T. 3 S., R. 11 W.

A. T. & P. RY

BLOOMFIELD AVE

BOUNDARY CITY OF SANTA FE SPRINGS

CSB-2550-3  
A2 OF A3

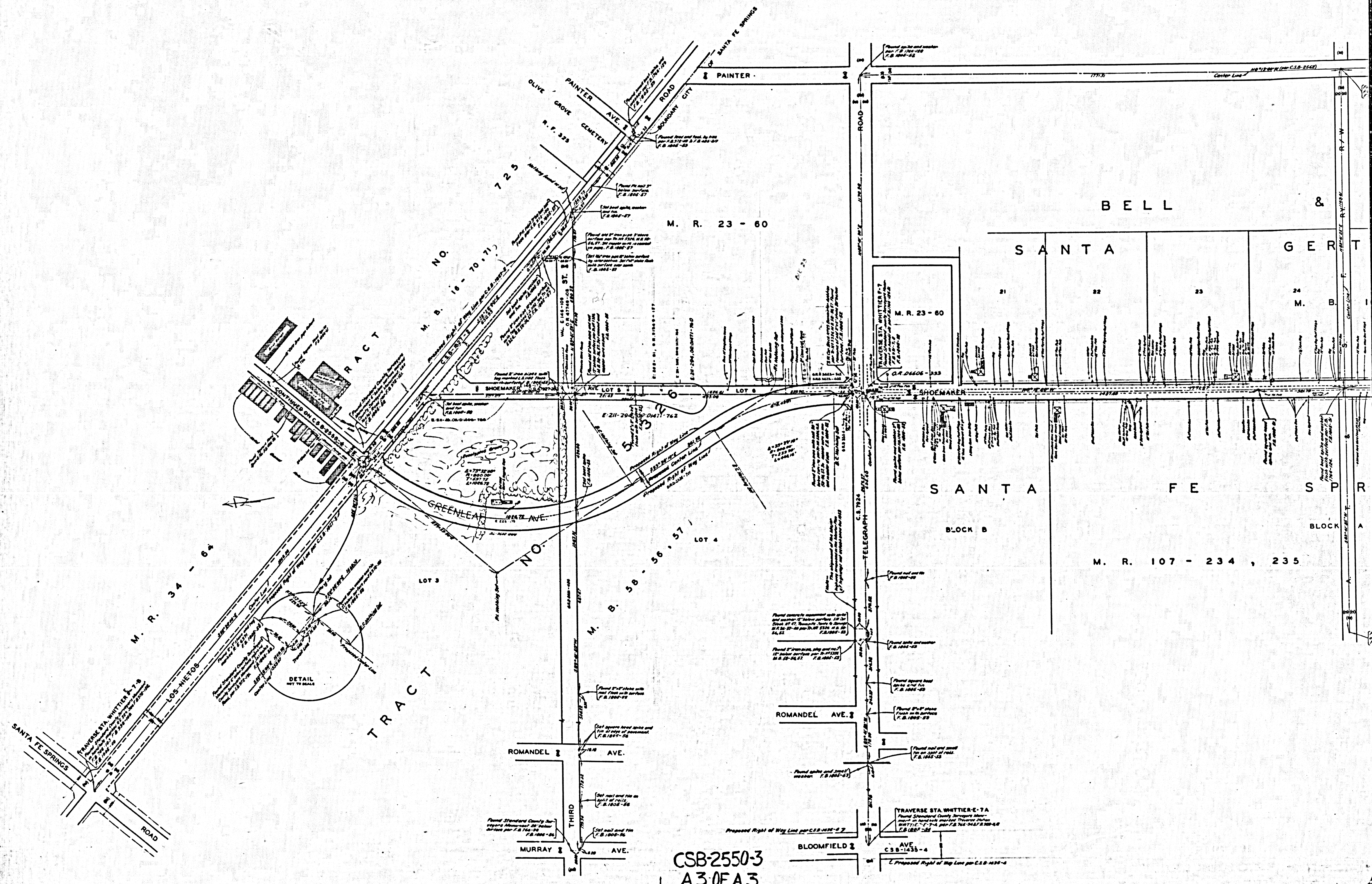
TRAVERSE S  
Plat Standard  
T.B.B. 222, R. 11  
C.B. 1803-49

Proposed Right of Way Lot per C.S.B.-195-47

TRaverse STA WHITTIER E-9  
Plat Standard County Surveyors' Authority  
C.S.B. 1435-4  
E-9 per F.B. 765-30, F.B. 900-14, 14  
F.B. 1803-49

Proposed Right of Way Lot per C.S.B.-195-3





CSB-2550-3  
A3 OF A3