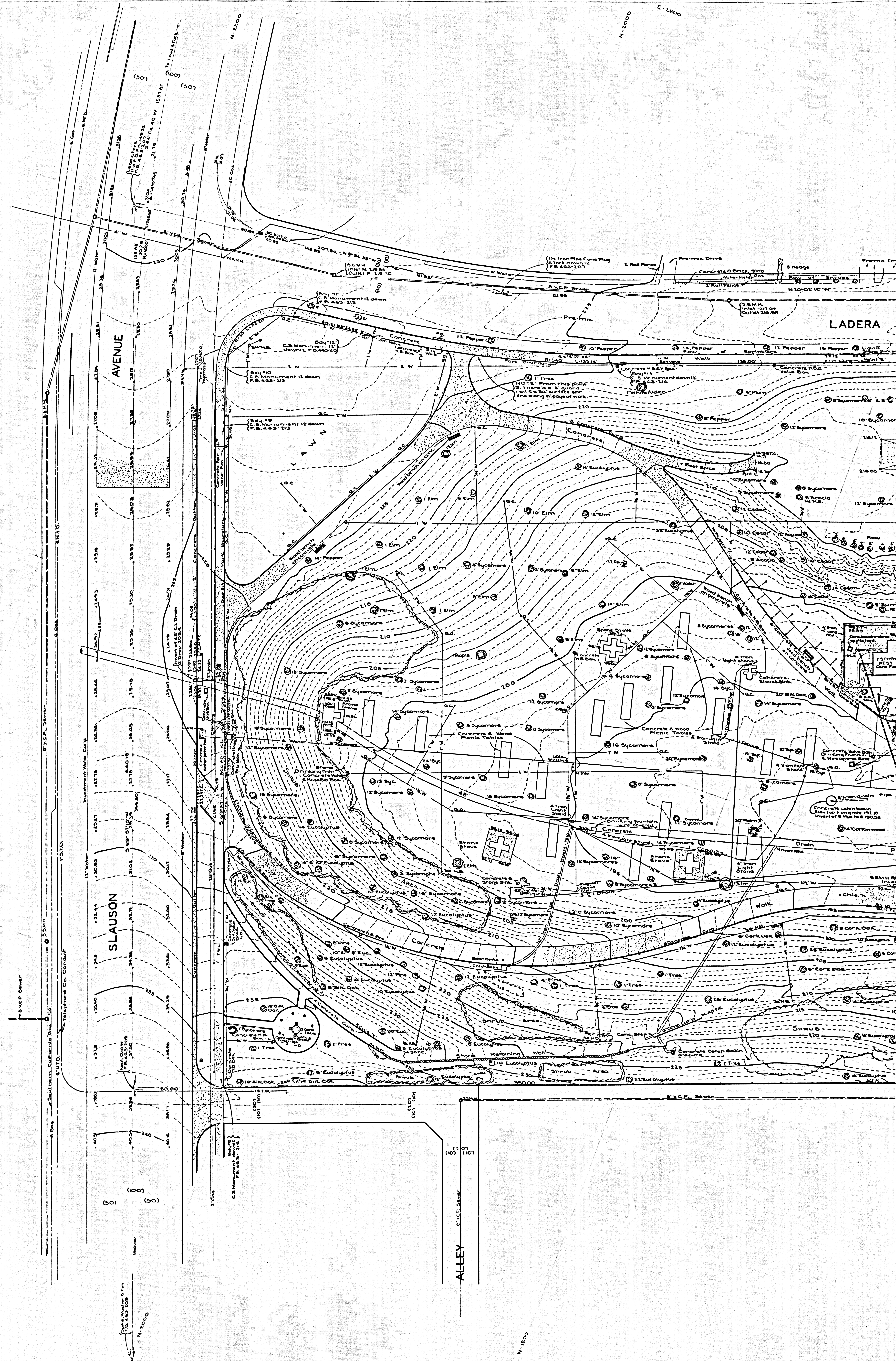
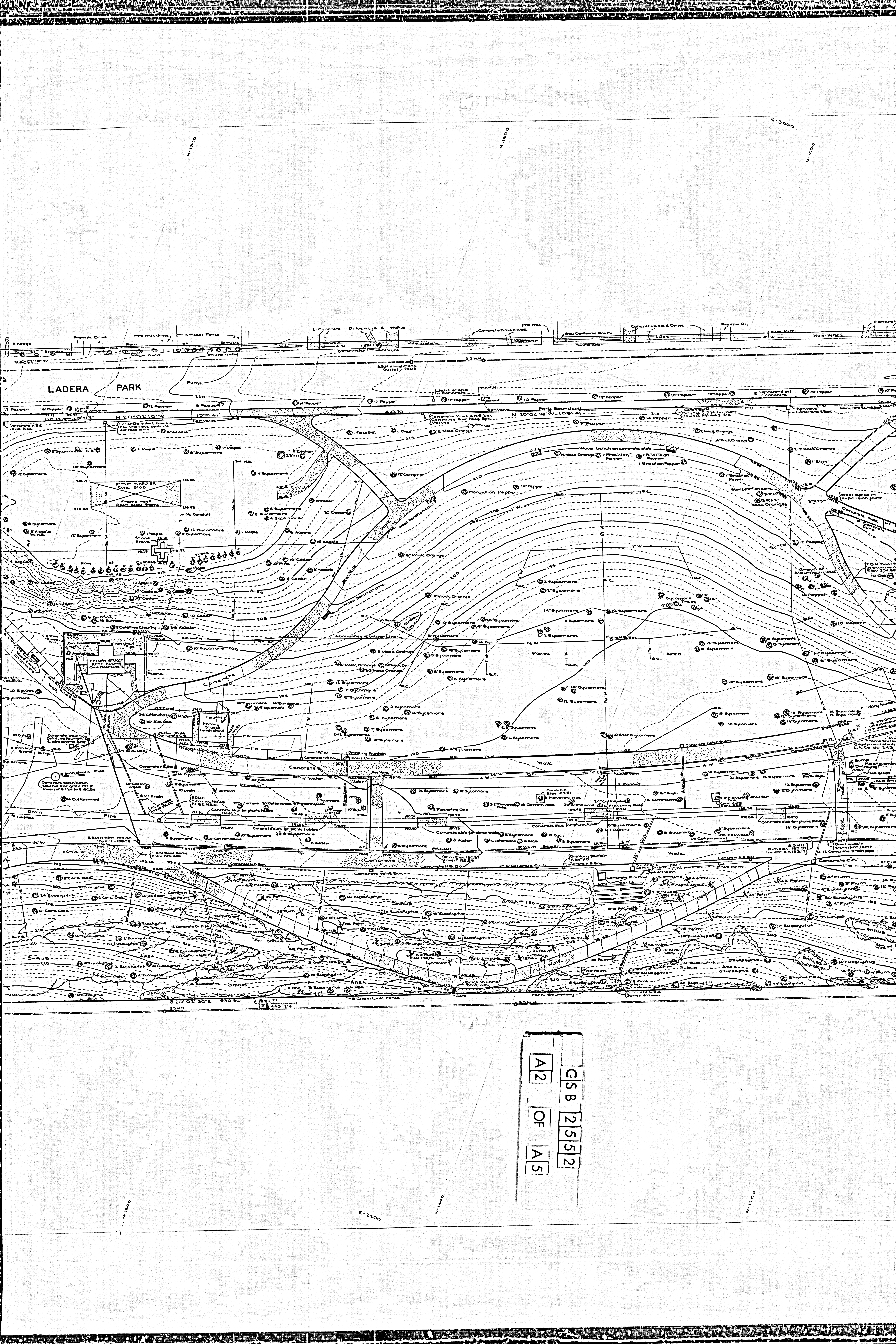


CSB 25512
A11 OF A5





CSB 2552
A2 OF A5

E-2100

N-1200

N-1800

N-1000

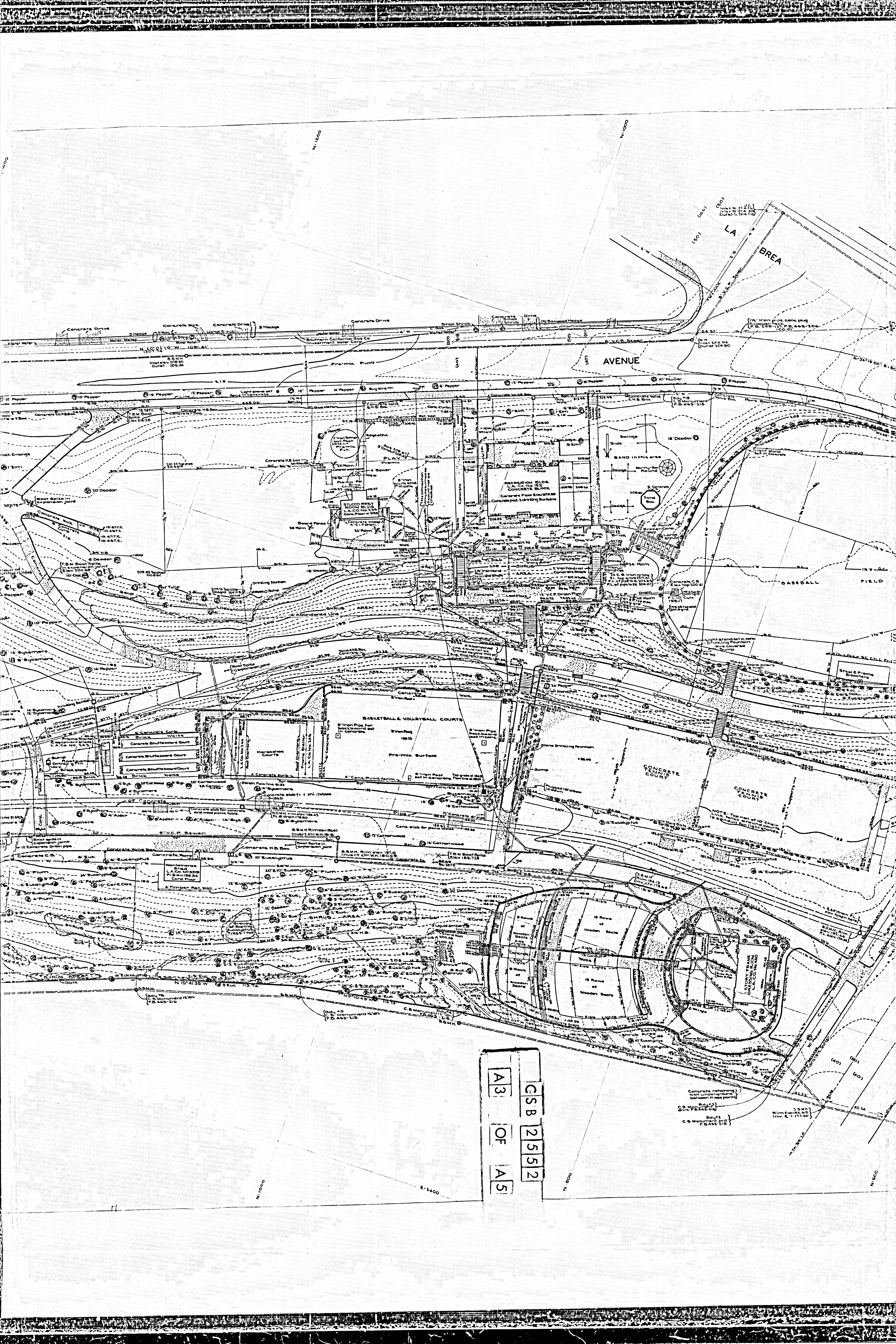
E-3000

N-1400

N-1800

N-1000

LADERA PARK

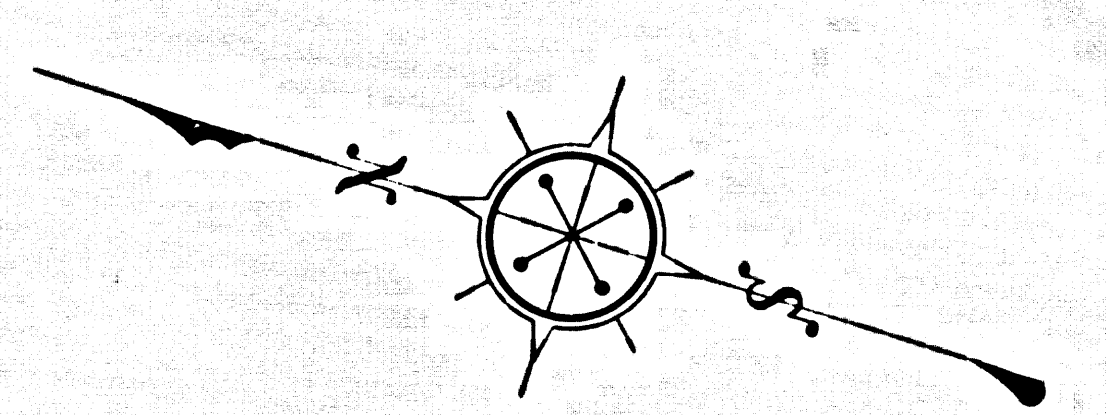
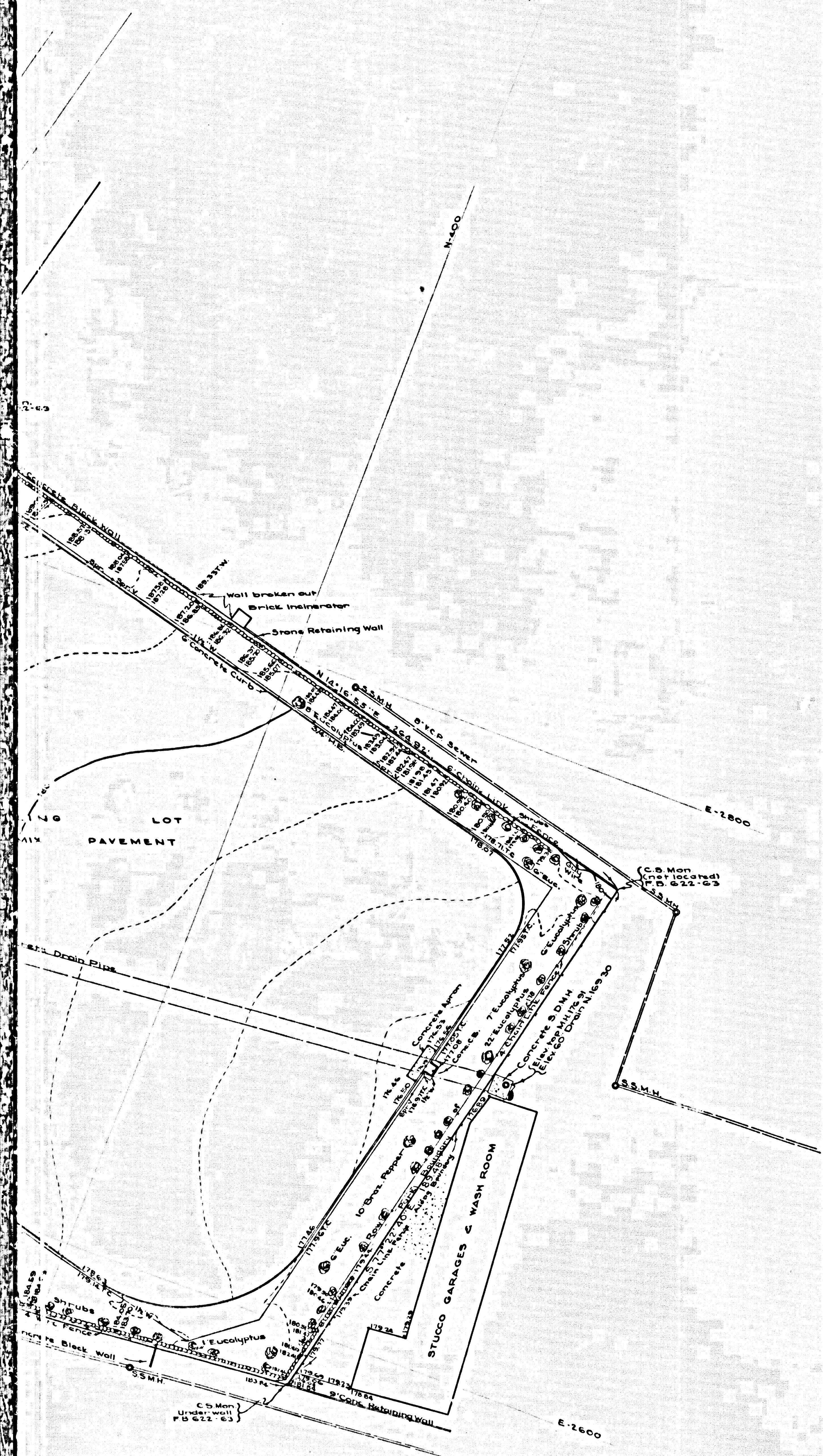


CSB 2552
A3 OF A5

Concrete retaining wall under ground between two base points
C.S. Mon. 1/2" dia. 10' x 10' x 10'
C.S. Mon. 1/2" dia. 10' x 10' x 10'
C.S. Mon. 1/2" dia. 10' x 10' x 10'

CSB 2552
A4 OF A5





COUNTY OF LOS ANGELES
 TOPOGRAPHIC MAP OF
LADERA PARK
 COUNTY SURVEYORS MAP NO. B-2552
 SCALE: 1 INCH = 20 FEET

JOB NUMBER 0054.41
 JOHN A. LAMBIE-COUNTY ENGINEER
 SURVEYED JANUARY 3, 1956

SURVEYED ON REQUEST OF THE
 SUPERINTENDENT OF PARKS & RECREATION
 UNDER SEC. 79, ORD. 4099, BY LETTER
 DATED SEPTEMBER, 1953

BEARINGS ARE BASED ON THE BEARINGS AS
 SHOWN ON C.S. B - 768 SHEET 1 OF 4 SHEETS.
 P.T. SHEETS: G-468, G-469, G-470, G-471, G-472,
 F.B. 463 F.B. 622

FIELD WORK BY.....R.B.HOBSON
 OFFICE WORK BY.....T.M.PALMERI
 CHECKED BY.....J.J.EDWARDS

FOR BOUNDARY SURVEY SEE C.S. B - 768 SHT. 1
 1 M. 24

DATUM - MEAN SEA LEVEL
 ELEVATIONS SHOWN HEREON ARE BASED
 UPON B.M. L.D-1, F.B. 593-84. THE DATUM
 OF WHICH WAS DETERMINED FROM U.S.G.
 S.B.M. 1447 (U.S. 77) BASED UPON U.S.G.S.
 BULLETIN 766-54 (L.B. 302-3)
 Revised 2/19/59 (Storm drain) T.M.P.

C S B 2 5 5 2
 OF
 A 5