

COUNTY OF LOS ANGELES  
 MAP OF  
 LOS ANGELES COUNTY FIRE STATION NO. 3  
 IN THE  
 EAST LOS ANGELES COUNTY FIRE  
 PROTECTION DISTRICT  
 BEING LOTS 72 & 73 TRACT NO. 9436, M. B. 129-8.9.  
 COUNTY SURVEYORS MAP NO. B-2557  
 SCALE:-1 INCH = 50 FT.

JOB NUMBER 0801.51  
 JOHN A. LAMBI<sup>®</sup> - COUNTY ENGINEER  
 SURVEYED:- NOV.-DEC. 1955  
 SURVEYED ON REQUEST OF THE CHIEF ENGINEER  
 COUNTY FIRE PROTECTION DISTRICTS  
 UNDER SEC. 79, ORD. 4099, BY LETTER  
 DATED OCTOBER 26, 1955.  
 BEARINGS ARE BASED ON THE BEARING OF  
 OLYMPIC BLVD. AS SHOWN ON TRACT NO. 9436  
 M. B. 129-8.9.  
 F. B. 1892-151-188  
 FIELD WORK BY H. E. GRANQUIST  
 OFFICE WORK BY T. M. ICHIKIEN  
 CHECKED BY K. R. M<sup>®</sup> PHERSON  
 INDEX MAP 38

CSB-2557  
 A10FA2

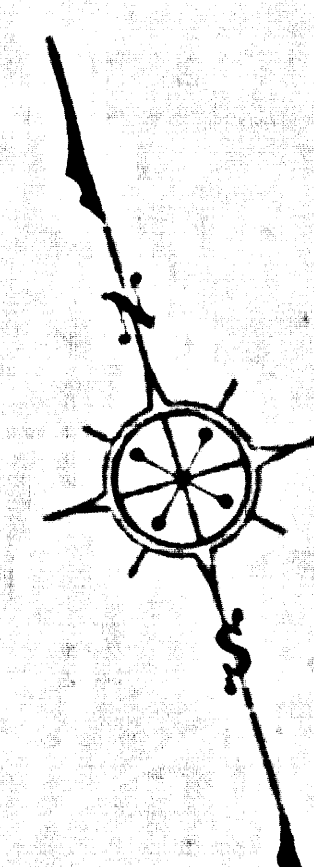
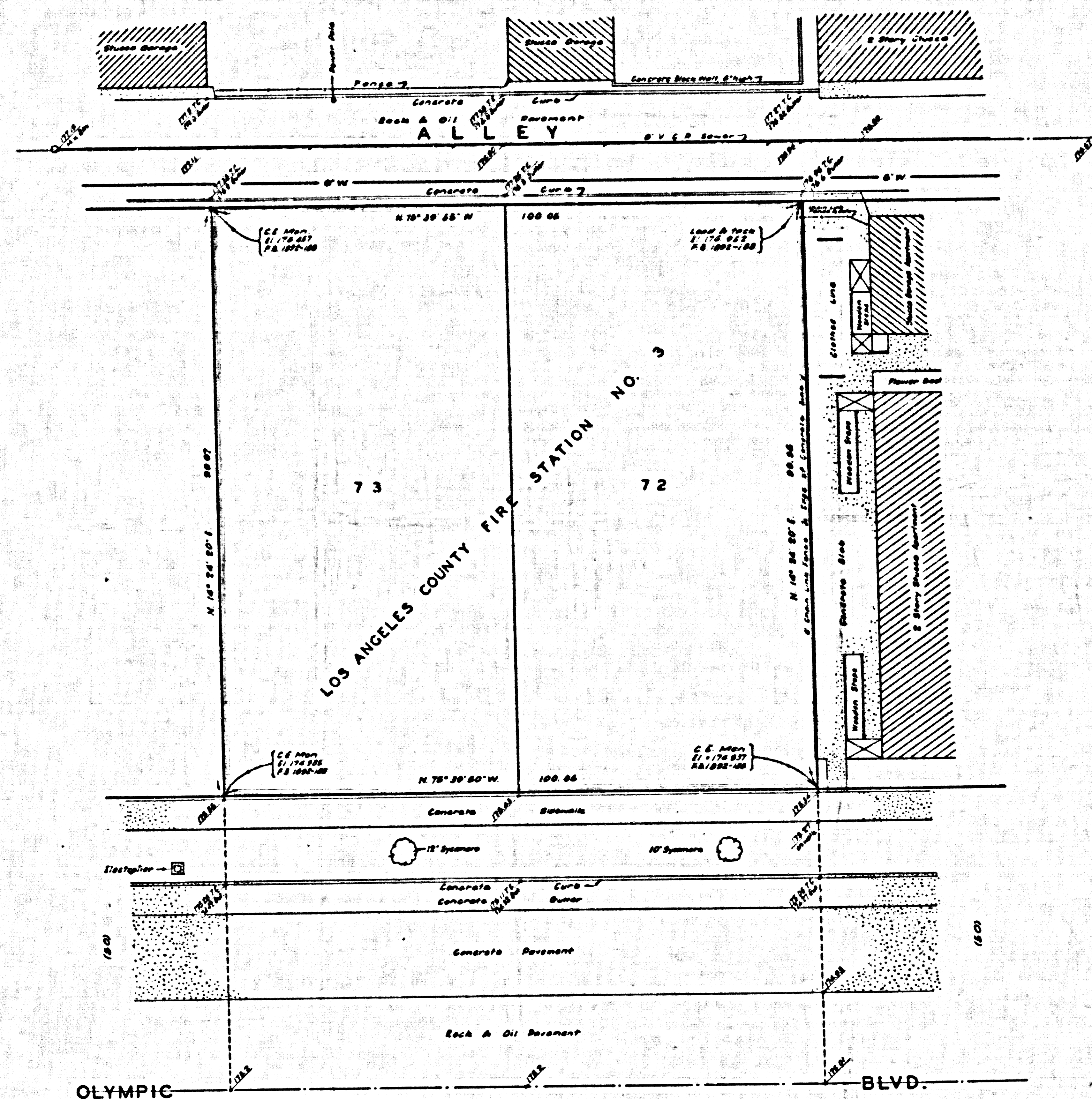
COPIED BY 2046EAOB2 MAP NO. B-5221

COPIED BY 2046EAOB2 MAP NO. B-5221



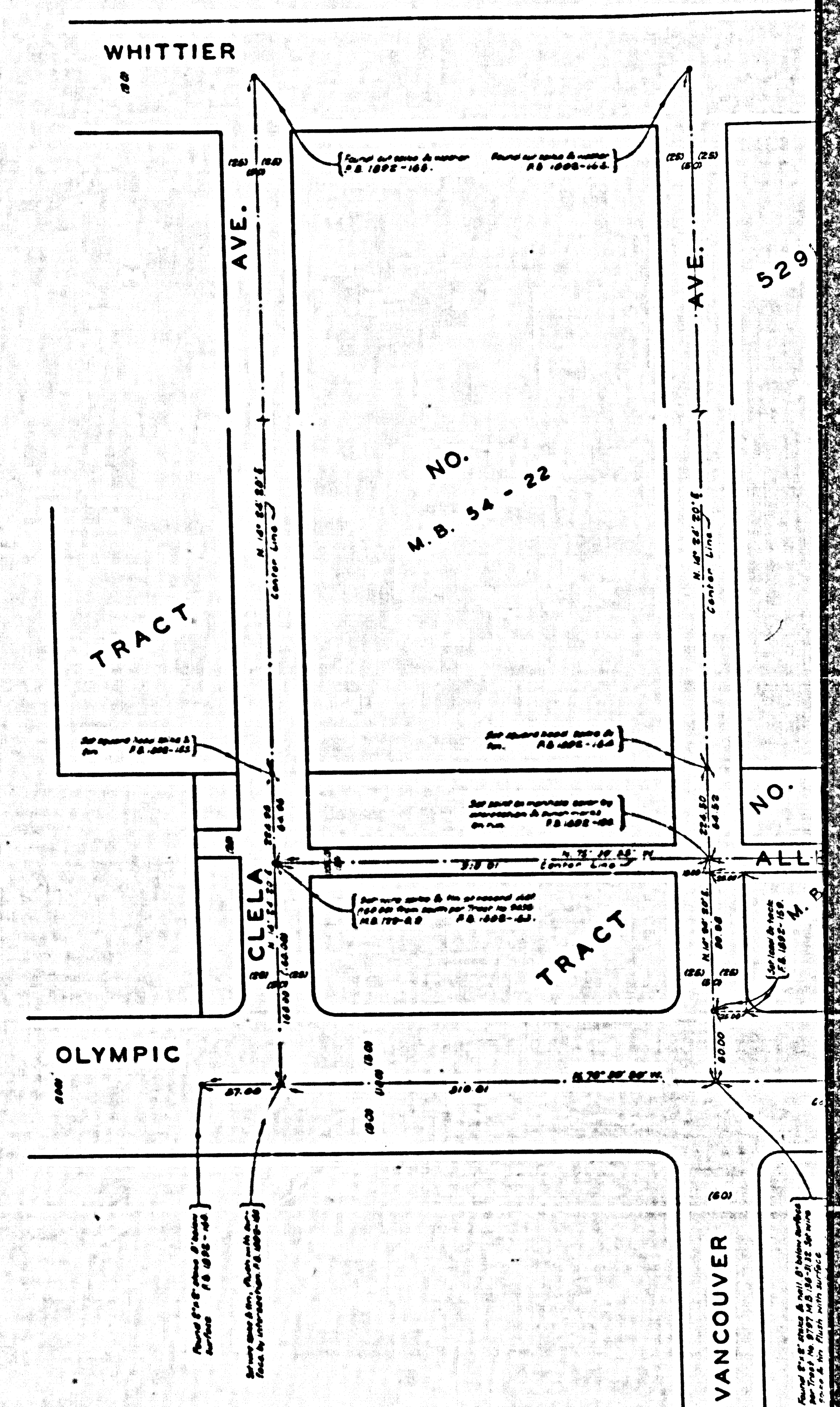
CSB-2557

CSB-2557



MARGINAL MAP  
SHOWING  
TOPOGRAPHY  
SCALE: 1 INCH = 10 FT.  
FIELD WORK BY H. E. CRANFORD  
OFFICE WORK BY T. M. ICHTEN  
CHECKED BY K. R. PETERSON  
F.B. 1892-151-188

DATUM - U.S.C. & G.S. SEA LEVEL DATUM OF 1929  
ELEVATIONS SHOWN HEREON ARE BASED ON LOS ANGELES  
COUNTY PRECISE LEVEL NET U.S. NO. 21-B 1952 ADJUSTMENT



CSB-2557  
A20FA2