

COUNTY OF LOS ANGELES  
 MAP OF  
**STREETS IN THE  
 SOUTH WHITTIER AREA NO. 1  
 SANITARY SEWER DISTRICTS**

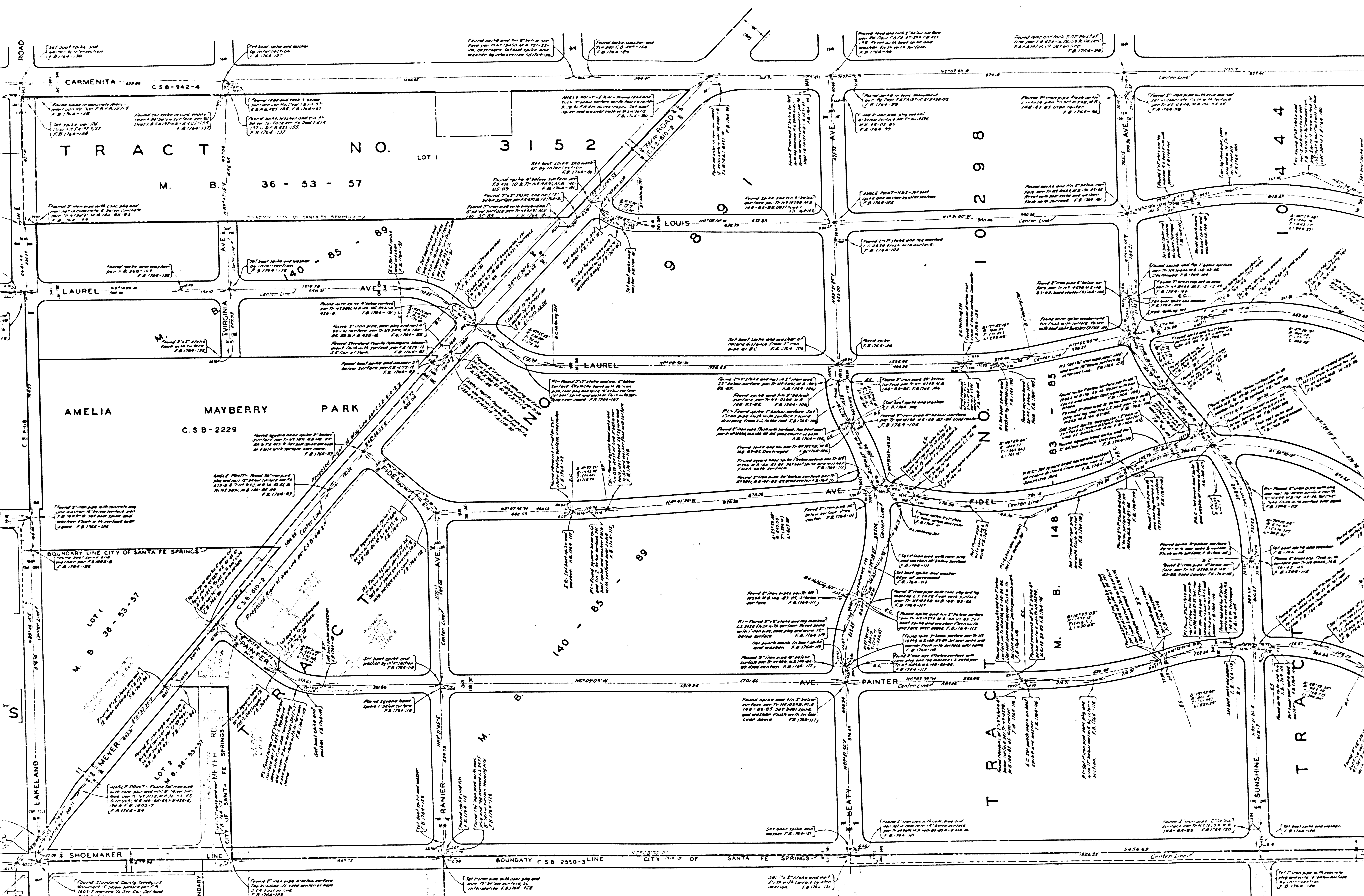
COUNTY SURVEYORS MAP NO. B-2562  
 SHEET NO. 1 OF 3 SHEETS  
 SCALE: 1 INCH = 100 FT.

JOB NUMBER 0303.00  
 JOHN A. LAMBIE-COUNTY ENGINEER  
 SURVEYED-1952-1955  
 SURVEYED ON REQUEST OF THE COUNTY  
 ENGINEER UNDER SEC. 79, ORD. 4099  
 BY LETTER DATED APR. 10, 1952  
 BEARINGS ARE BASED ON THE CALIFORNIA  
 COORDINATE SYSTEM ZONE 7 PER ACT 8351  
 GENERAL LAWS. SEE C. 9423  
 F.B. 1764 - 5 - 178 & 191  
 FIELD WORK BY W.C. MACK  
 J.S. COATES  
 OFFICE WORK BY R.L. GREEN  
 CHECKED BY C.J. GALLI

NOTE: THIS SURVEY MADE TO ESTABLISH CENTER LINES  
 ON THE STREETS IN THIS AREA PRELIMINARY TO THE  
 FORMATION OF A SANITARY SEWER DISTRICT.

Revised March 1964 by J.C.E.  
 Checked by J.C.E. and R.L.G. on 3/10/64  
 Original Survey by J.A.L. on 4/10/52

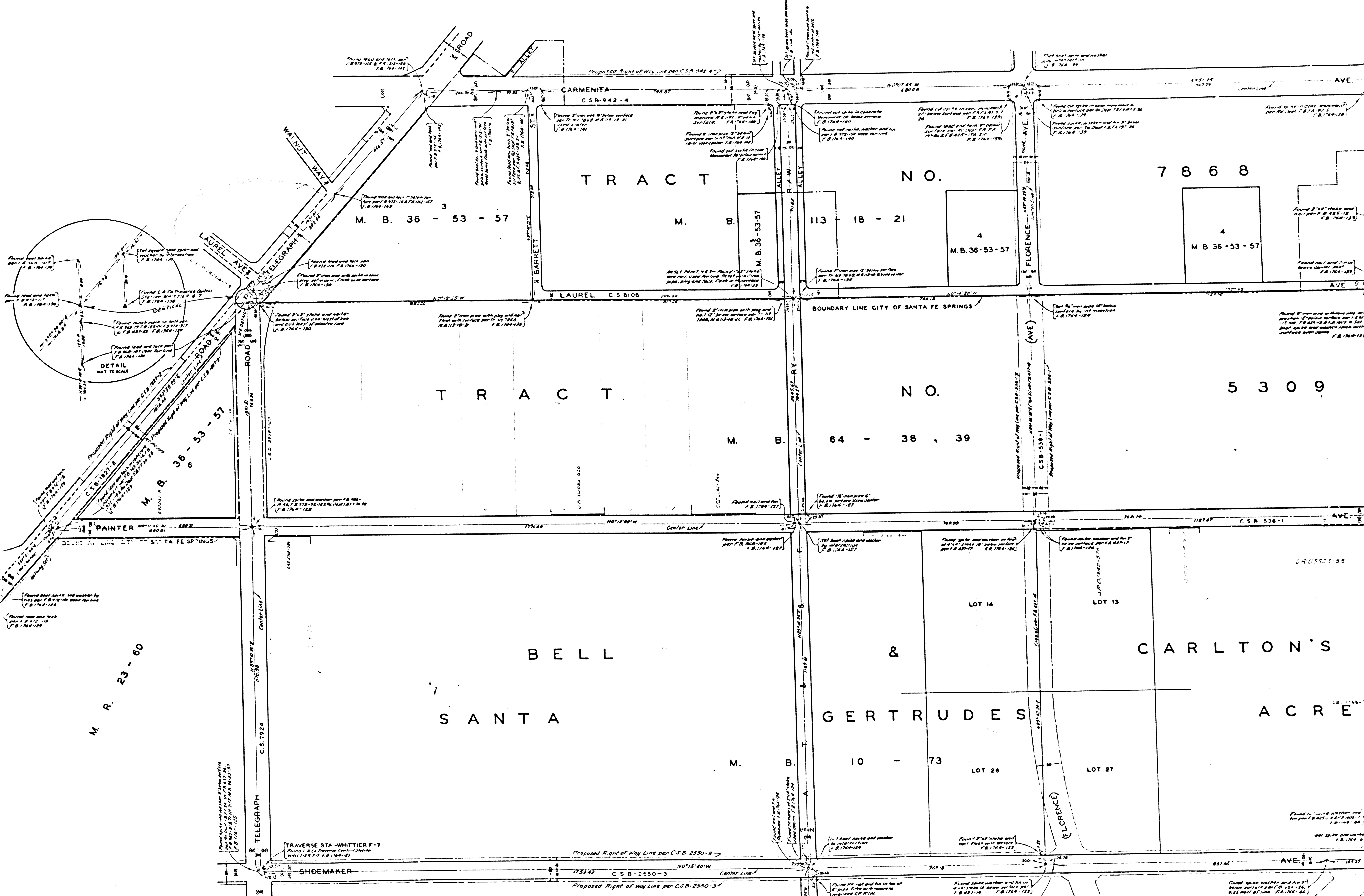






CONTINUED

ON



CSB-2562-1  
A3 OF A3