

COUNTY OF LOS ANGELES
 MAP OF
**STREETS IN THE HEMPSTEAD
 AVENUE AND HODGES AVENUE
 SANITARY SEWER DISTRICT**
 COUNTY SURVEYORS MAP NO. B-2564
 SCALE: 1 INCH = 100 FT.

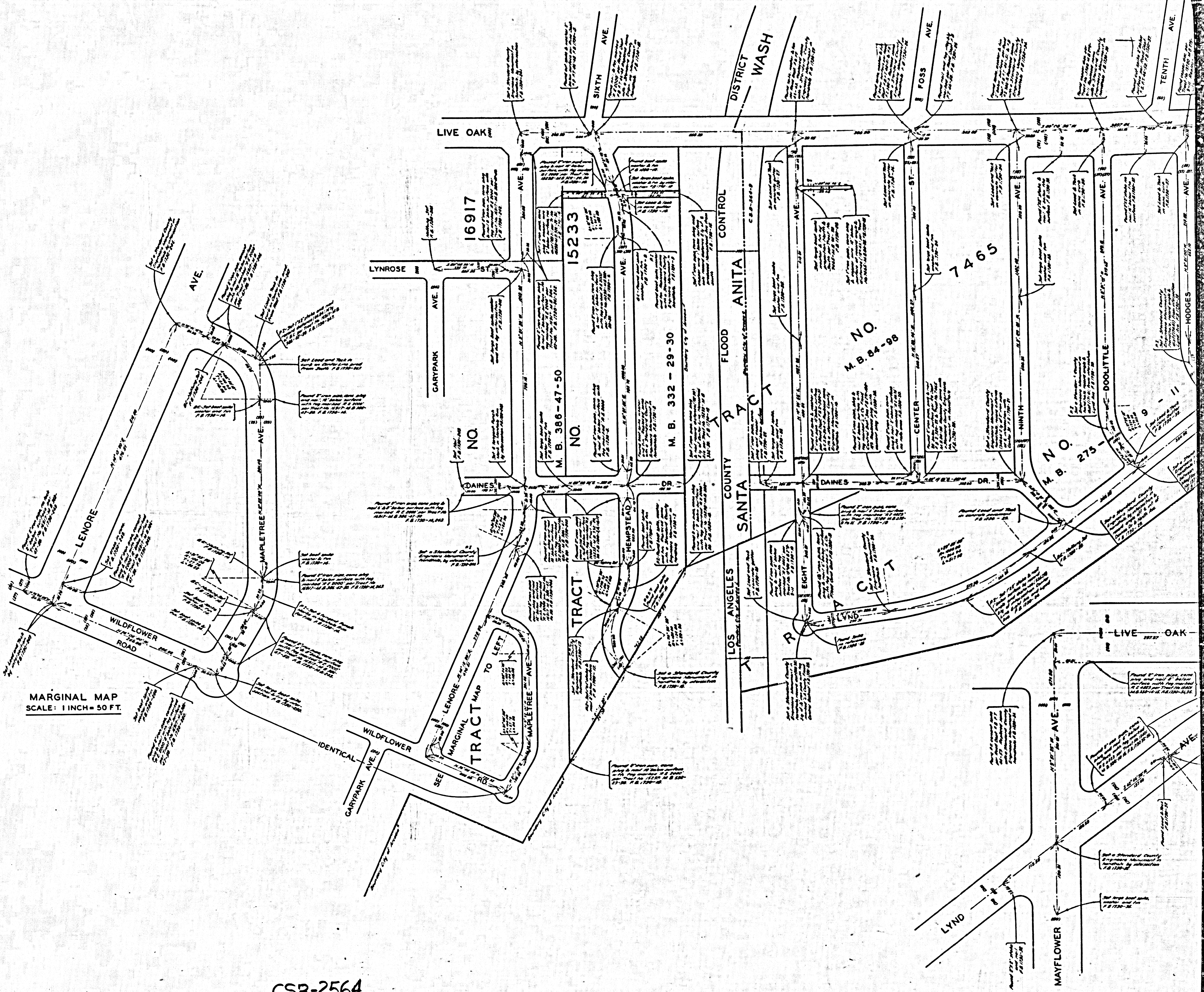
JOB NUMBER 0303.00
 JOHN A. LAMBIE - COUNTY ENGINEER
 SURVEYED AUG. 1951 - JULY 1952
 SURVEYED ON REQUEST OF THE COUNTY
 ENGINEER UNDER AUTHORITY OF THE BOARD
 OF SUPERVISORS BY ORDER DATED FEB. 26, 1946
 BEARINGS ARE BASED ON THE BEARING OF
 LIVE OAK AVENUE AS SHOWN ON C.S.B. 1351-3
 F.B. 1730-5-42 & 241-250
 FIELD WORK BY W.C. MACK
 OFFICE WORK BY L.C. WILSON
 CHECKED BY T.H. BURNS
 S.H. MILLER

THIS SURVEY MADE TO ESTABLISH CENTER
 LINES ON THE STREETS IN THIS AREA
 PRELIMINARY TO CONSTRUCTION OF SEWERS
 IN THE SANITARY SEWER DISTRICT
 COUNTY IMPROVEMENT NO. 1475 & 1487.

NOTE: ALL STANDARD COUNTY ENGINEERS
 MONUMENTS ARE 2" IRON PIPES SET IN
 CONCRETE, WITH BRASS CAPS MARKED
 UNLESS SHOWN OTHERWISE.
 I.M. 46

MARGINAL MAP
 SCALE: 1 INCH = 50 FT.

CSB-2564
 A1 OF A2



CSB-2564
A20FA2