

COUNTY OF LOS ANGELES
 MAP OF
LOS ANGELES COUNTY FIRE STATION NO. 6
 IN THE
**CONSOLIDATED COUNTY FIRE
 PROTECTION DISTRICTS**
 BEING PORTIONS OF LOTS 130 & 131, TRACT NO. 648, M.B. 16-90, 91

COUNTY SURVEYORS MAP NO. B-2567
 SCALE 1" = 50 FT.

JOB NUMBER 0601.54
 JOHN A. LAMBIE COUNTY ENGINEER
 SURVEYED - FEB. 1956

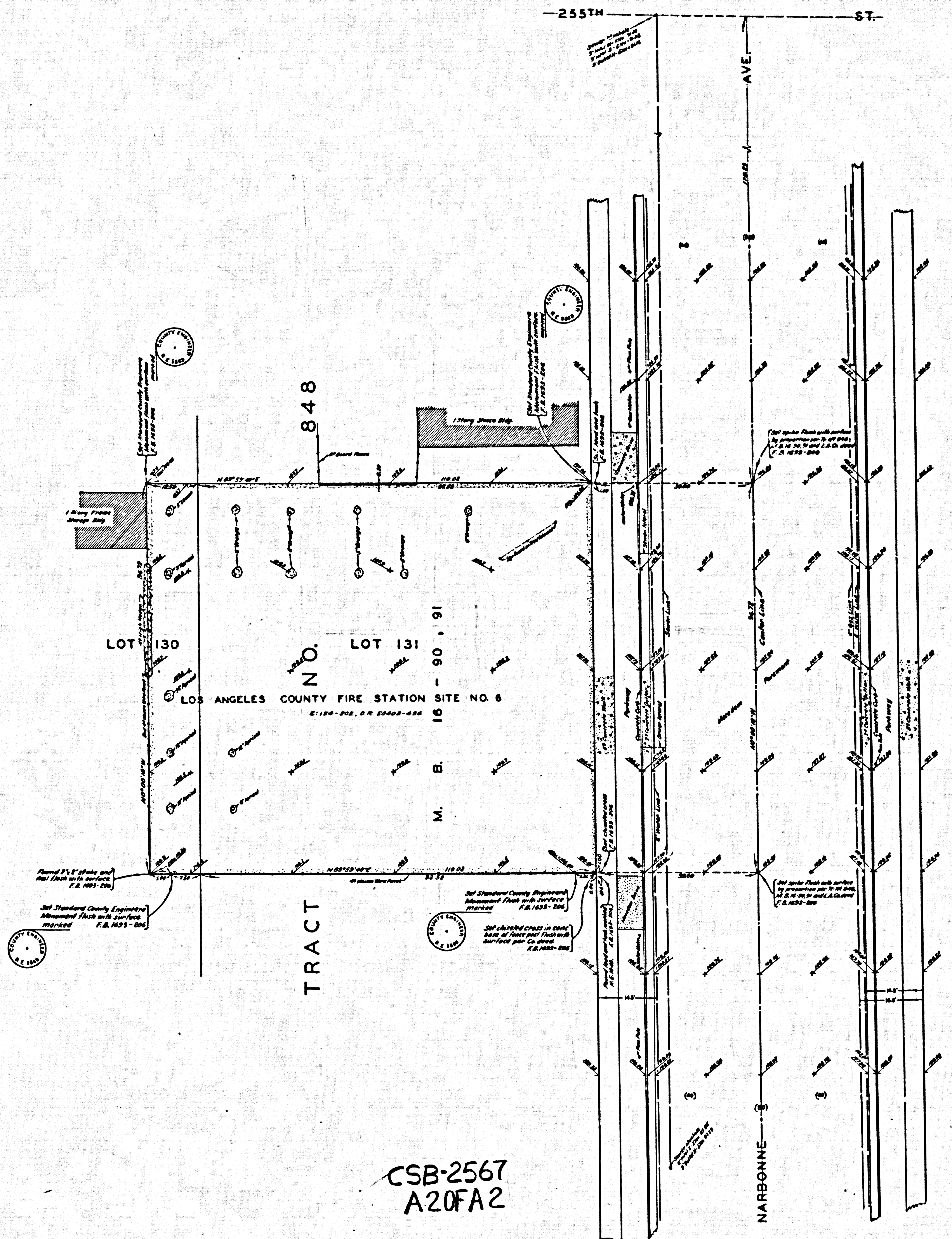
SURVEYED ON REQUEST OF THE CHIEF ENGINEER
 COUNTY FIRE PROTECTION DISTRICTS
 UNDER SEC. 79, ORD. 4099, BY LETTER
 DATED JAN. 20, 1956

BEARINGS ARE BASED ON THE BEARING OF
 NARBONNE AVE. AS SHOWN ON C.S. 89316.

F. B. 1693-201-222
 FIELD WORK BY E. F. ENGLISH
 OFFICE WORK BY R. L. GREEN
 CHECKED BY S. M. MILLER
 INDEX 28

CSB-2567
 A10FA2

LOS ANGELES
 ADJUST



CSB-2567
 A20FA2

MARGINAL MAP
 SHOWING
 TOPOGRAPHY
 SCALE - 1 INCH = 10 FT.

FIELD WORK BY EF. ENGLISH
 OFFICE WORK BY RL. GREEN
 CHECKED BY SH. MILLER
 F.B. 1693 - 201 - 222

DATUM - U.S.C. & G.S. SEA LEVEL, DATUM OF 1929
 ELEVATIONS SHOWN HEREON ARE BASED ON LOS ANGELES
 COUNTY PRECISE LEVEL NET B.M. NO. 21 - 43 - 1053 ADJUST-
 MENT.

