

**LONGVIEW ROAD**  
 COUNTY OF LOS ANGELES  
 MAP OF  
**131ST STREET EAST**  
 FROM  
 SOUTH LINE SECTION 26  
 T. 5 N; R. 10 W.  
 AVENUE TO M  
 PEAR-BLOSSOM-HIGHWAY  
 AND  
**ALMONDALE AVENUE**  
 AVENUE FROM M  
 PEAR-BLOSSOM-HIGHWAY  
 TO  
 AVENUE E  
 COUNTY SURVEYORS MAP NO B-2568  
 SHEET NO 3 OF 5 SHEETS  
 SCALE: 1 INCH = 200 FT.

JOB NUMBER 007473

JOHN LAMBIE-COUNTY ENGINEER  
 SURVEYED MAR 1955 TO OCT 1956

SURVEYED ON REQUEST OF THE REGIONAL  
 PLANNING COMMISSION UNDER SEC. 79, ORD.  
 4099, BY LETTER DATED MARCH 10, 1954  
 AND BY BOARD ORDER DATED DEC. 11, 1954.

BEARINGS ARE BASED ON THE BEARING OF  
 RANGE LINE BETWEEN RANGE 9W AND  
 RANGE 10W AS SHOWN ON C. 8 8733.

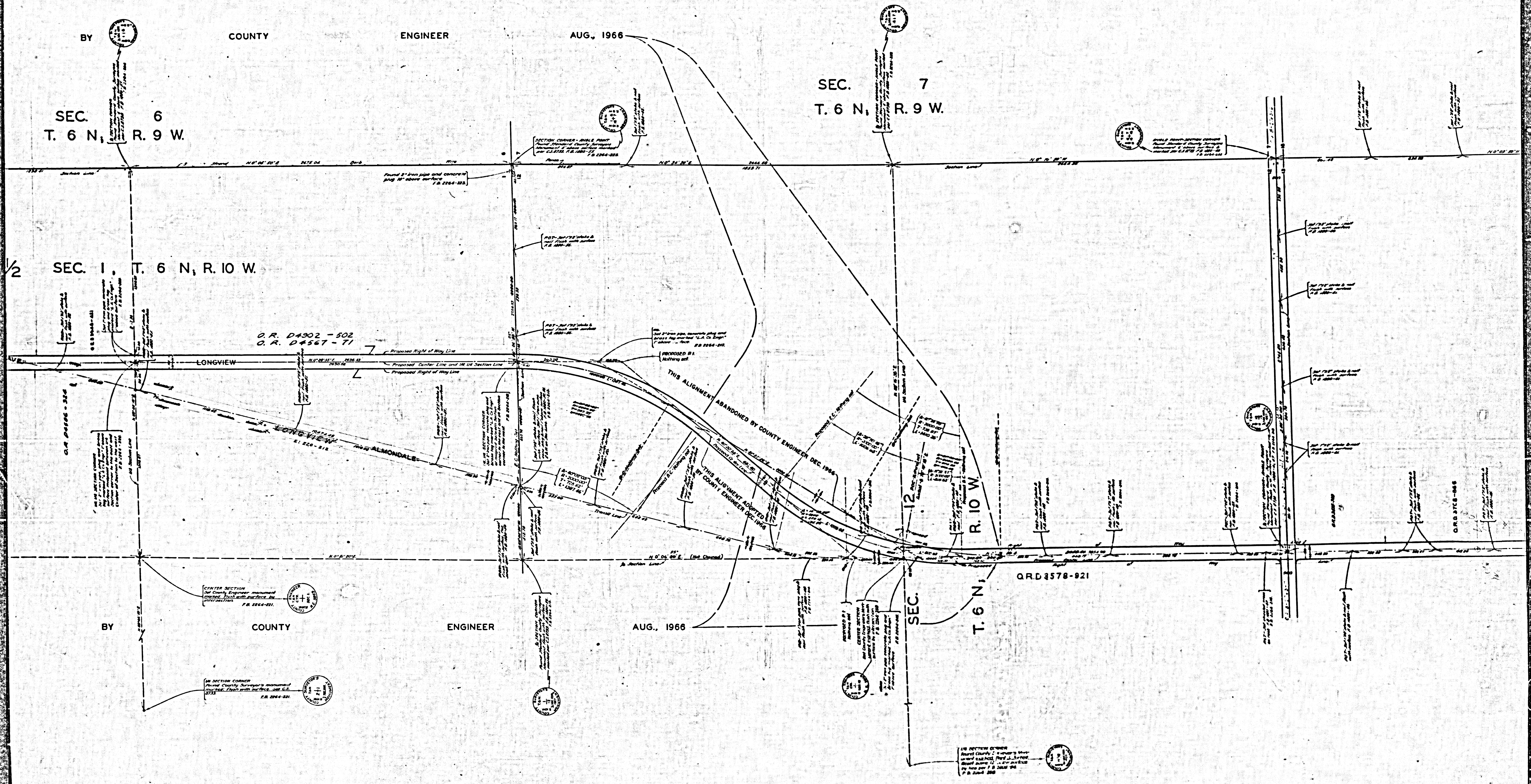
F.B. 1960-3-70, 201-216, 221-267

FIELD WORK BY J.C. PIERCE  
 OFFICE WORK BY T.M. BURNS  
 CHECKED BY C.J. GALLI  
 & H. MILLER

1 M 60, 69

Revised March 1966  
 Alignment Revised Between Ave D & Ave L  
 by G.L.L., Aug. 1966 (See L.C. Map Aug 4, 1966)  
 Approved by Engineers and Surveyors on 10/10/66  
 Drawn by H.A., Dec 10, 1966 (111) and H.A. (111)  
 Approved by Board of Surveyors on 10/10/66  
 1/4" = 100' (See 1/4" = 100' Map Aug 4, 1966)

CSB-2568-3  
 A1 QFA3



BY COUNTY ENGINEER  
SEC. 6  
T. 6 N., R. 9 W.

SEC. 7  
T. 6 N., R. 9 W.

1/2 SEC. 1, T. 6 N., R. 10 W.

O.R. D4902-502  
O.R. D4567-71

CENTER SECTION  
Board County Engineer's monument  
found. Found with surface by  
instructions. F.B. 2264-821

1/4 SECTION CORNER  
Board County Surveyor's monument  
found. Found with surface by  
instructions. F.B. 2264-821

