

COUNTY OF LOS ANGELES
MAP OF
LOS ANGELES CO. FIRE STATION NO. 102
IN A PORTION OF
LOTS 5 & 6, KLUEGEL'S SUBDIVISION
COUNTY SURVEYORS MAP NO B-2569
SCALE: 1 INCH = 100 FT.

JOB NUMBER 003834

JOHN A. LAMBIE - COUNTY ENGINEER
SURVEYED JULY 1958 TO MARCH 1958

SURVEYED ON REQUEST OF THE COUNTY
ENGINEER UNDER SEC. 79, ORD. 4099 BY
LETTER DATED FEB. 20, 1958

BEARINGS ARE BASED ON THE BEARING OF
BASE LINE RD. PER C.S. B-1043.

F.B. 1959-201-248

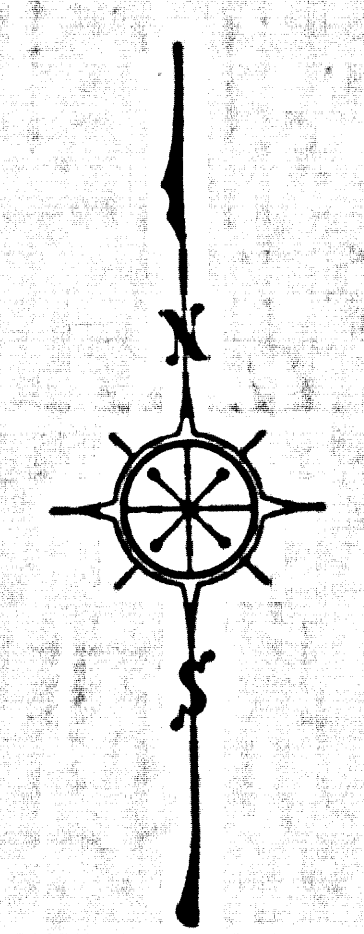
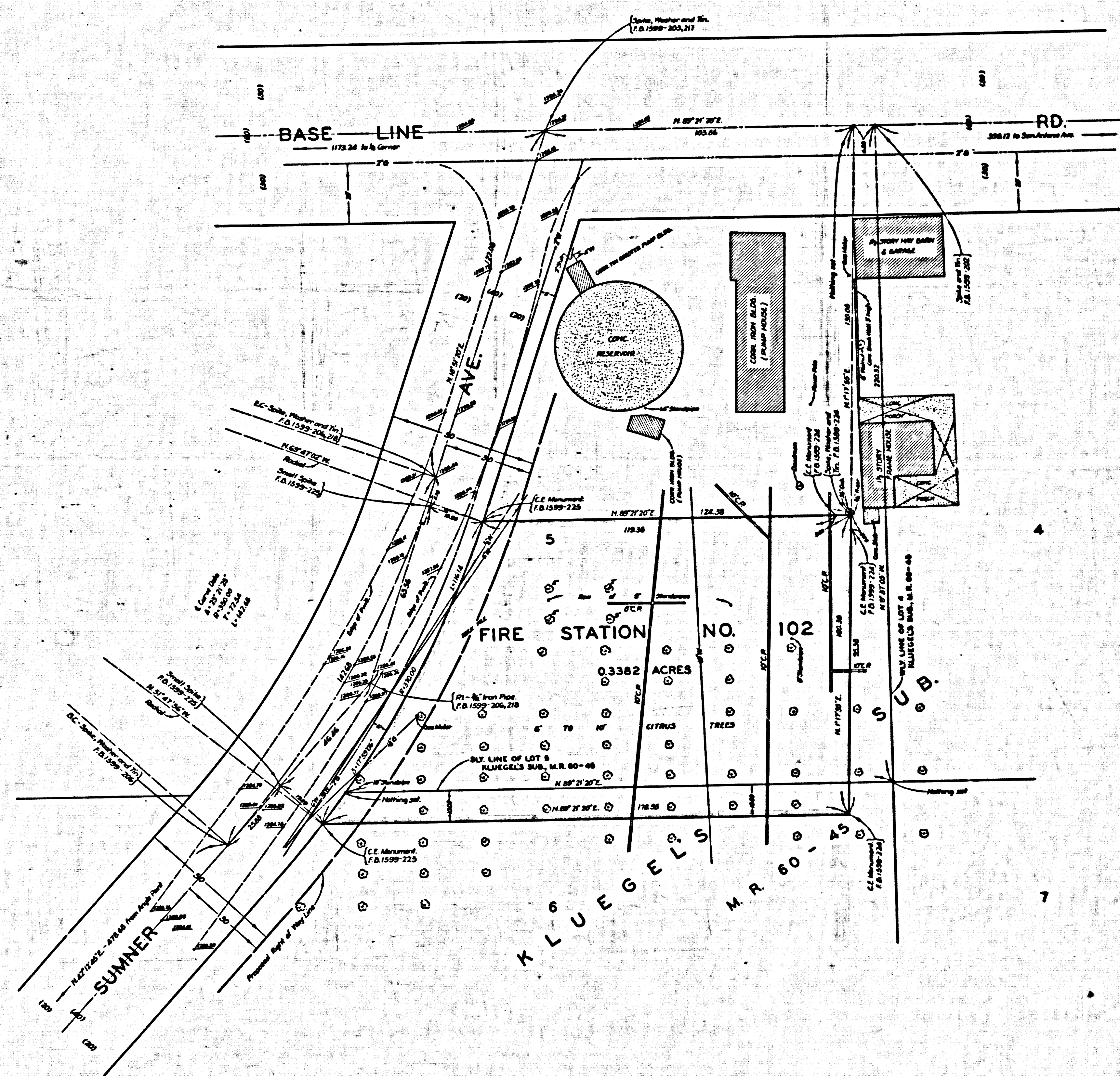
FIELD WORK BY D.E. HOLMES
OFFICE WORK BY S. SHINGOIA
CHECKED BY K.R. McPHERSON
C.J. GALLI

INDEX MAP 49

Revised April, 1964

CSB-2569
A1 OF A2

COPYRIGHT SURVEYORS MAP NO. B-5269



MARGINAL MAP
SHOWING
TOPOGRAPHY
SCALE: 1 INCH = 20 FT.

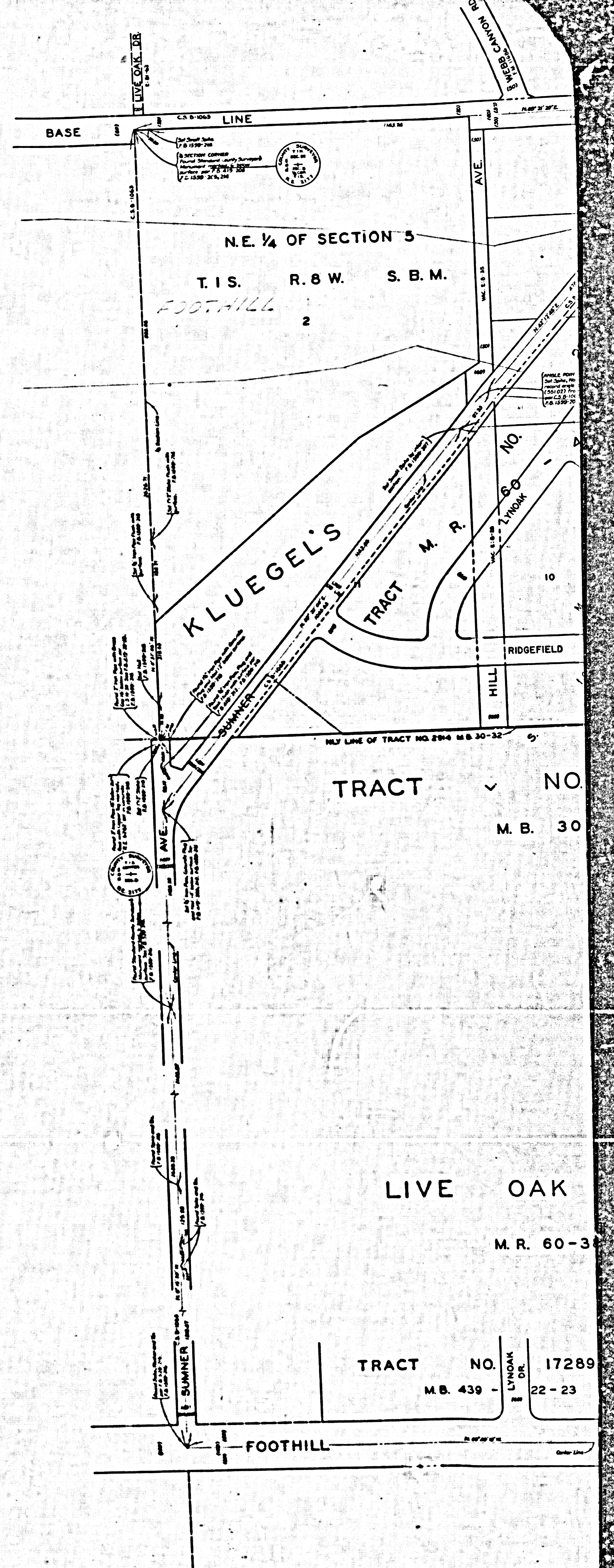
FIELD WORK BY: B. E. HOLMES
OFFICE WORK BY: S. SHINDO
CHECKED BY: R. R. SPHERSON
C. J. GALLI

F. B. 1599-200-212, 227-248

DATUM
U.S.C. & G.S. SEA LEVEL DATUM OF 1929
ELEVATIONS ARE BASED ON THE LOS ANGELES
COUNTY PRECISE LEVEL NET LINE B M. 11-90
1952 ADJUSTMENT.

CSB-2569
A2 of A2

COPYRIGHT SURVEYORS MAP NO. B-5269



TRACT NO. 17289
M.B. 439 - LYNOAK DR. 22-23