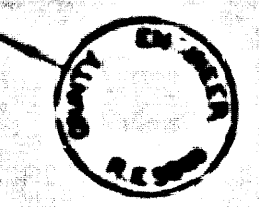
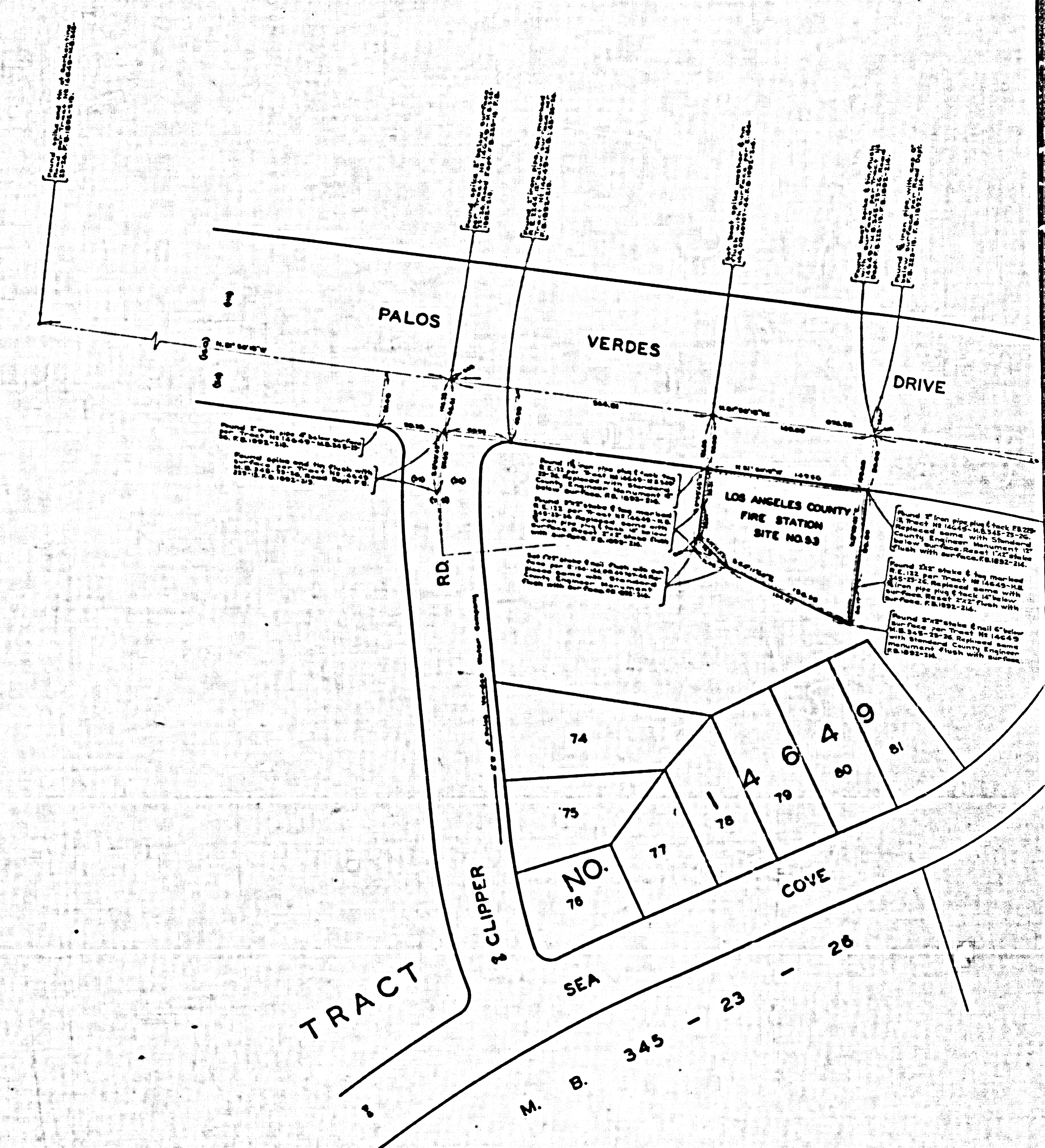
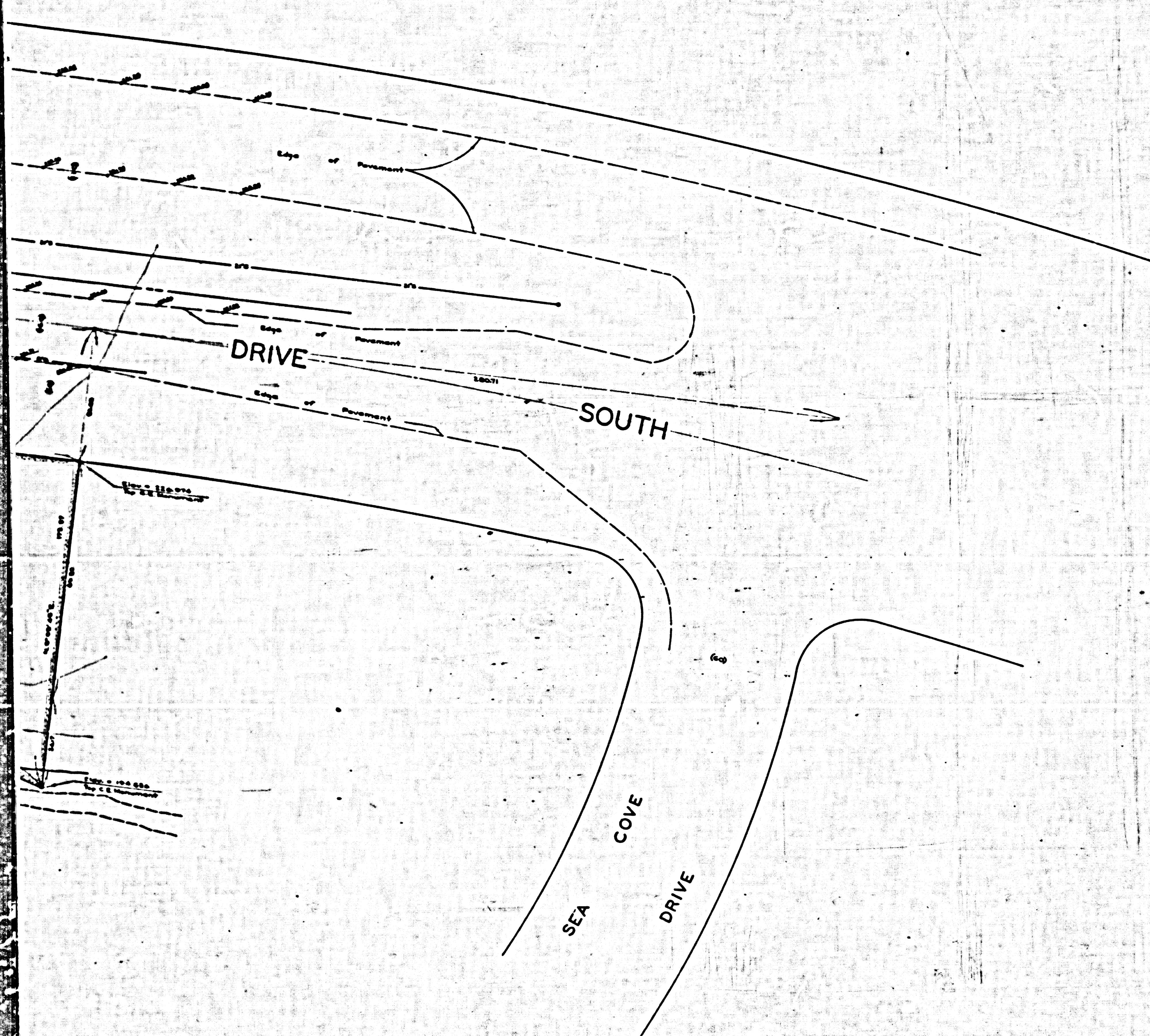


COUNTY OF LOS ANGELES
 MAP OF
**LOS ANGELES COUNTY
 FIRE STATION SITE
 NO. 53**
 ABALONE AREA
 BEING
 A PORTION OF RANCHO LOS
 PALOS VERDES P:2-543-545
 COUNTY SURVEYORS MAP NO. B-2576
 SCALE: 1 INCH = 50 FT.

JOB NUMBER 0801.43
 JOHN A. LAMBIE - COUNTY ENGINEER
 SURVEYED JANUARY 1958
 SURVEYED ON REQUEST OF THE CHIEF ENGINEER
 COUNTY FIRE PROTECTION DISTRICTS
 UNDER SEC. 79, ORD. 4099, BY LETTER
 DATED DEC 27, 1955
 BEARINGS ARE BASED ON THE BEARING PER
 TRACT NO. 14849 - M.B. 345 - 23 - 26
 F.B. 1892 - 21 - 240
 FIELD WORK BY.....E.F. ENGLISH
 OFFICE WORK BY.....C.C. RUBENACKER
 CHECKED BY.....K.R. MAPHERSON
 INDEX MAP 27

NOTE: ALL STANDARD COUNTY ENGINEERS
 MONUMENTS ARE 2" IRON PIPE SET
 CONCRETE WITH BRASS CAP MARKED





MARGINAL MAP
 SHOWING
 TOPOGRAPHY
 SCALE: 1 INCH = 20 FEET
 FIELD WORK BY..... E.F. ENGLISH
 OFFICE WORK BY..... C.C. RUBENACKER
 CHECKED BY..... K.R. MCPHERSON
 F.B. 1892-211-240
 DATUM
 U.S.C. & G.S. SEA LEVEL DATUM OF 1929
 ELEVATIONS ARE BASED ON LOS ANGELES
 COUNTY PRECISE LEVEL NET LINE NO.
 34-1953 ADJUSTMENT.

CSB-2576
 A2 OF A3

